

WOOD GUARD RAIL REQUIRED

Stations	Left	Right
53159-53181	14 H.	24 H.
53182-53189	14 H.	24 H.

CABLE GUARD RAIL REQUIRED

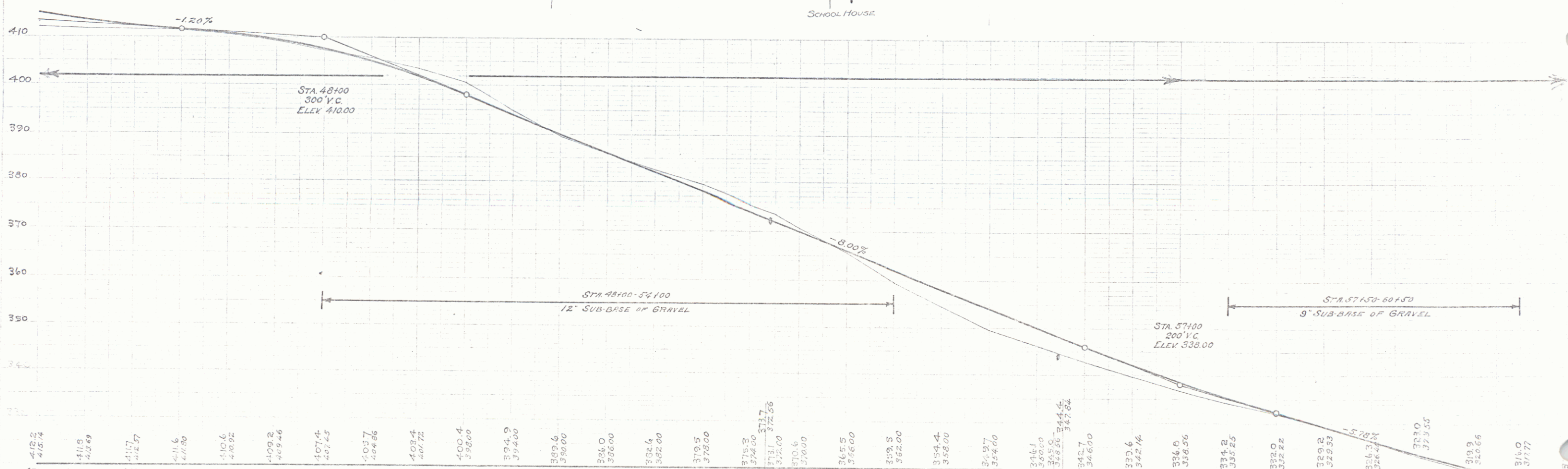
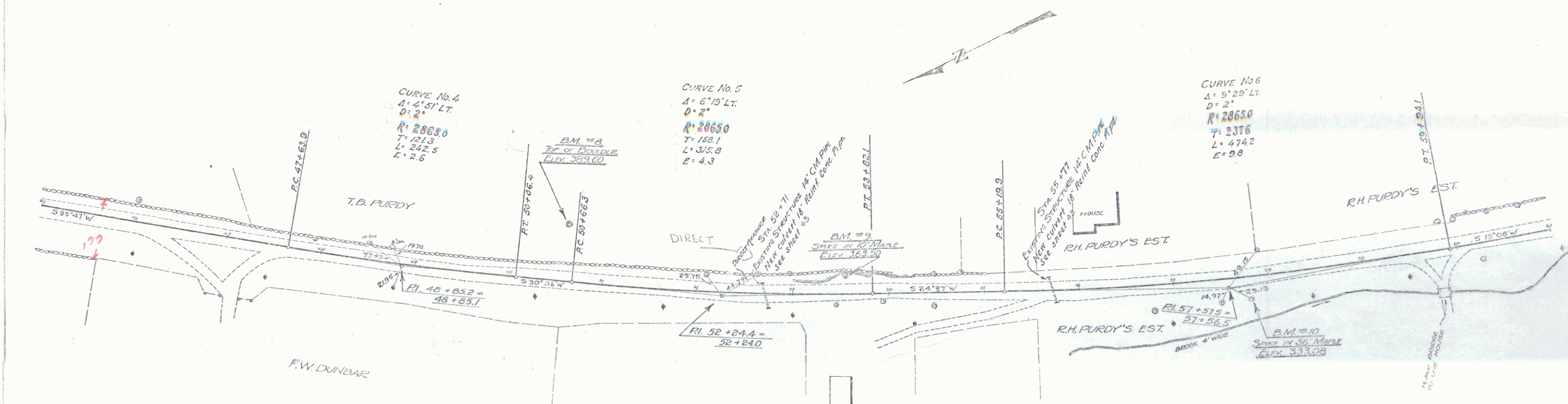
Stations	Left	Right
43300-43305	5 H.	5 H.
45180-45186	60 H.	73 H.
52180-52186		152 H.

NEW REINFORCED CONCRETE PIPE CULVERTS REQUIRED

Station	Dist.	Leq.	Cont.	Size
52171	18'	31 H.	30 C.Y.	36" 34
52177	18'	36 H.	30 C.Y.	36" 34

104.A 1929 7 98

PLAN
 1/4" = 100'
 1/8" = 50'
 1/16" = 25'



Station	Elevation
45100	412.2
45200	415.74
45300	411.9
45400	409.69
45500	411.7
45600	412.57
45700	411.6
45800	411.89
45900	410.6
46000	409.92
46100	409.2
46200	409.46
46300	407.4
46400	407.45
46500	403.7
46600	404.86
46700	403.4
46800	400.72
46900	400.4
47000	398.09
47100	394.9
47200	394.00
47300	389.6
47400	386.00
47500	386.0
47600	384.6
47700	382.00
47800	379.5
47900	376.00
48000	375.3
48100	374.00
48200	373.7
48300	372.68
48400	373.1
48500	372.58
48600	372.00
48700	370.6
48800	368.5
48900	366.00
49000	362.5
49100	362.00
49200	359.4
49300	355.800
49400	355.200
49500	352.97
49600	352.00
49700	351.1
49800	350.0
49900	348.26
50000	344.4
50100	342.7
50200	341.84
50300	340.0
50400	339.6
50500	339.6
50600	339.6
50700	339.6
50800	339.6
50900	339.6
51000	339.6
51100	339.6
51200	339.6
51300	339.6
51400	339.6
51500	339.6
51600	339.6
51700	339.6
51800	339.6
51900	339.6
52000	339.6
52100	339.6
52200	339.6
52300	339.6
52400	339.6
52500	339.6
52600	339.6
52700	339.6
52800	339.6
52900	339.6
53000	339.6
53100	339.6
53200	339.6
53300	339.6
53400	339.6
53500	339.6
53600	339.6
53700	339.6
53800	339.6
53900	339.6
54000	339.6
54100	339.6
54200	339.6
54300	339.6
54400	339.6
54500	339.6
54600	339.6
54700	339.6
54800	339.6
54900	339.6
55000	339.6
55100	339.6
55200	339.6
55300	339.6
55400	339.6
55500	339.6
55600	339.6
55700	339.6
55800	339.6
55900	339.6
56000	339.6
56100	339.6
56200	339.6
56300	339.6
56400	339.6
56500	339.6
56600	339.6
56700	339.6
56800	339.6
56900	339.6
57000	339.6
57100	339.6
57200	339.6
57300	339.6
57400	339.6
57500	339.6
57600	339.6
57700	339.6
57800	339.6
57900	339.6
58000	339.6
58100	339.6
58200	339.6
58300	339.6
58400	339.6
58500	339.6
58600	339.6
58700	339.6
58800	339.6
58900	339.6
59000	339.6
59100	339.6
59200	339.6
59300	339.6
59400	339.6
59500	339.6
59600	339.6
59700	339.6
59800	339.6
59900	339.6
60000	339.6
60100	339.6
60200	339.6
60300	339.6
60400	339.6
60500	339.6
60600	339.6
60700	339.6
60800	339.6
60900	339.6
61000	339.6

BM #8 - TOP OF BOULDER 60' LT. OF STA. 53+59 - ELEV = 389.00
 BM #9 - SPIKE IN ROOT OF 10' MAPLE 17' LT. OF STA. 53+34 - ELEV = 363.50
 BM #10 - SPIKE IN ROOT OF 36' MAPLE 23' RT. OF STA. 57+48 - ELEV = 333.08

SERIES P. NO. 10
 SHEET 10 OF 28 SHEETS

5