

**WOOD GUARD RAIL REQUIRED**

Clearway Station	Left	Right
B19+26	24'	24'
B21+91	-	24'
B26+70	24'	24'
B27+21	24'	24'

**WOOD GUIDE POSTS REQUIRED**

Sta.	Dist.	Notes
B19+26	10'	

**NEW CURB CONCRETE PIPE CHANNELS REQUIRED**

Station	Length	Size	Material	Notes
B19+26	10'	18"	CP	
B21+91	18'	36"	CP	
B26+70	18'	36"	CP	
B27+21	18'	36"	CP	

**STANDARD UNREINFORCED WITH WEDGED CLAY PIPE**

Station	Length	Size	Material	Notes
B19+26	10'	18"	CP	

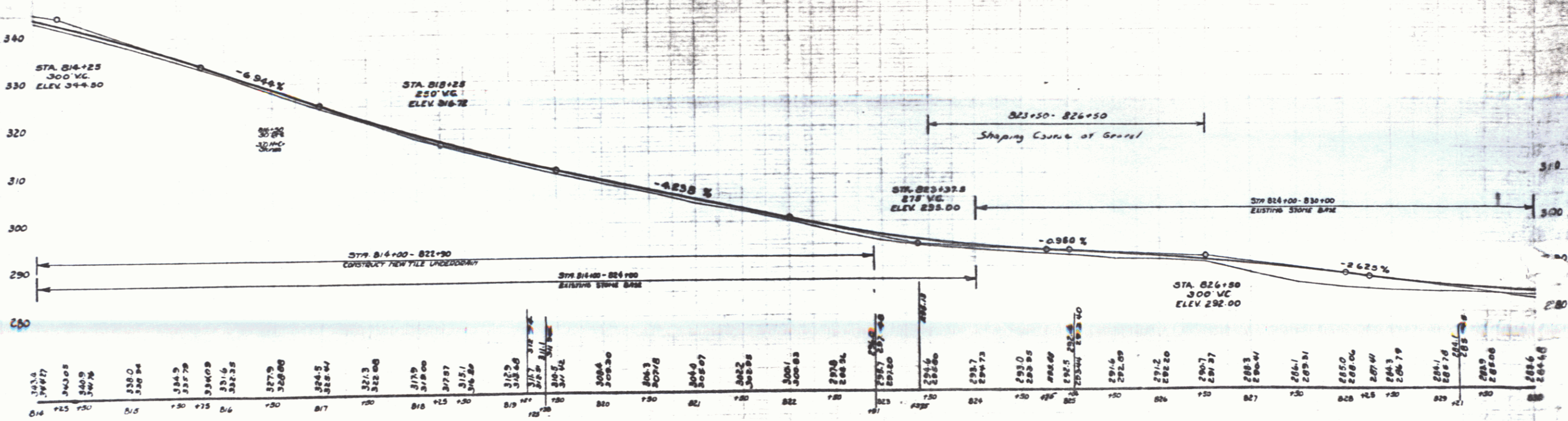
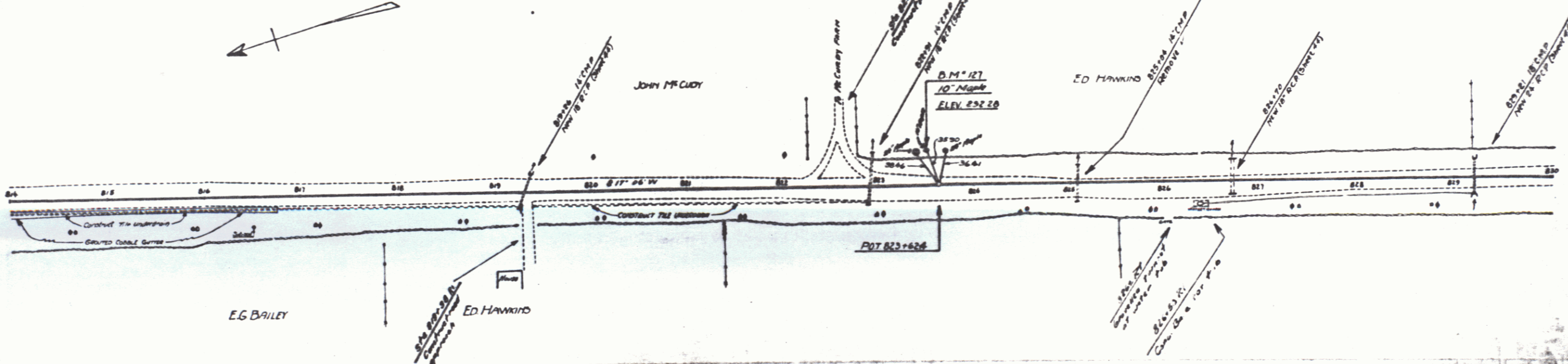
**COATED COBBLE GUTTER REQUIRED**

Station	Length	Width	Depth	Notes
B19+26	10'	24"	2 1/2"	

ROAD STATE, ALABAMA  
 COUNTY, MOBILE  
 PROJECT NO. 12-4-A 1930

**CONCRETE RAIL FOR WHEEL STOPPING**

Sta.	Dist.	Notes
B26+57	14'	



D.M. 127 Spike in root of 10' Maple, 34 ft. of side B23+82 - Elev 292.20

SERIES F No. 124-A  
 SHEET 20 OF 108