

WOOD GUANO RAIL REQUIRED

Station	Left	Right
728+77	-	24'
802+00	-	24'
804+00	-	24'
804+00	-	24'
806+28	-	24'
809+30	-	24'
809+37	-	24'

CABLE GUANO RAIL REQUIRED

Station	Left	Right
790+00-790+00	0'-0"	-
790+00-790+00	0'-0"	-
801+00-801+00	0'-0"	-
801+00-801+00	0'-0"	-
803+00-803+00	0'-0"	-
730+00-730+00	4'-5"	-
801+00-801+00	2'-4.5"	-
803+00-803+00	3'-7"	-

NEW PAVE CONCRETE PIPE CURVES REQUIRED

Station	Curve	Length	Grade	Notes
728+77	18'	40'	1.4%	1.5% No. 1'
802+00	18'	40'	1.4%	1.5% No. 1'
804+00	18'	40'	1.4%	1.5% No. 1'
806+28	18'	40'	1.4%	1.5% No. 1'
809+30	18'	40'	1.4%	1.5% No. 1'
813+07	18'	40'	1.4%	1.5% No. 1'

SCOURED CHANNELS WITH WOODEN CURB AND

Station	Left	Right	Depth
804+00-804+00	-	-	-
804+00-804+00	-	-	-

SCOURED COBBLE GUTTER REQUIRED

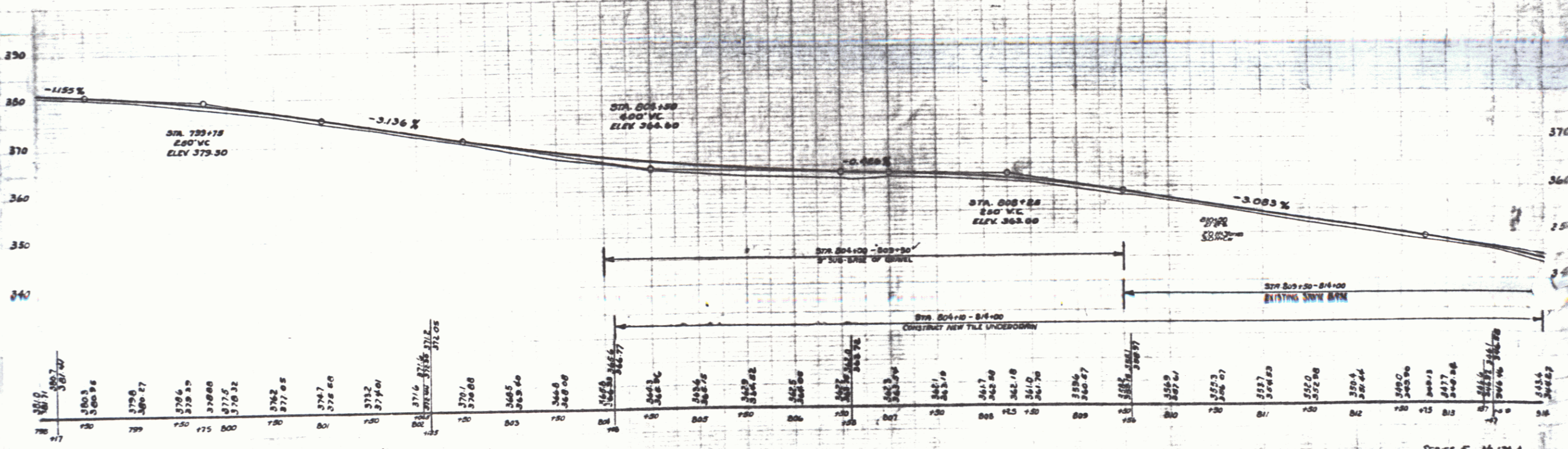
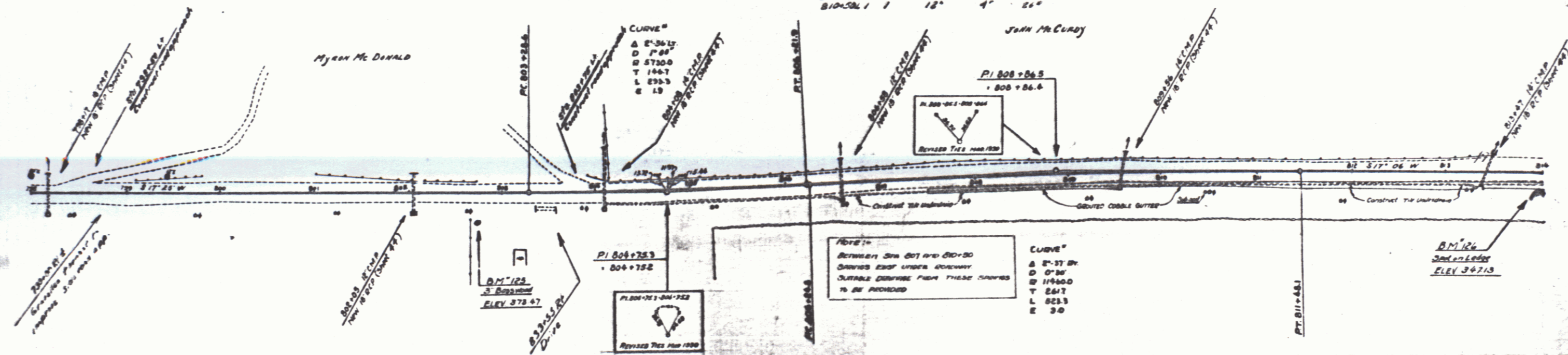
Station	Left	Right	Depth
804+00-804+00	-	-	-
804+00-804+00	-	-	-
813+17	1'	3'	17' 6"

ORIGINAL PIPE CURVES REQUIRED

Station	Curve	Length	Grade
803+55	21'	20'	2.7% (over 100')

METAL DROP WALKS USED

Sta.	PI	Grade	Length	Notes
804+00	1	12'	4'	26"
808+00	1	12'	4'	26"
810+00	1	12'	4'	26"



B.M. 125 Spike in root of 3' Basswood, 50 ft. rt. of Sta. 801+10 - Elev. 378.47
 B.M. 126 Spike on ledge, 10 ft. rt. of Sta. 813+06 - Elev. 347.15