

WOOD GUARD RAIL EXCLUDED

STATION	LEFT	RIGHT
752+24	24'	-
763+60	24'	-
760+20	20'	24'

GUIDE POSTS OF WOOD

STATION	LEFT	RIGHT
752+24	-	1
760+20	1	-
763+60	-	1

NEW 12" CONCRETE PIPE CULVERTS EXCLUDED

STATION	LEFT	RIGHT	DI. FEET	SPACING
762+74	18'	18'	12"	10'
763+40	18'	18'	12"	10'
760+20	18'	18'	12"	10'

STANDARD UNDERDRY WITH WROTHEN CLAY PIPE

STATION	LEFT	RIGHT	DI. FEET	SPACING
750+00	12'	12'	18"	10'
751+50	12'	12'	18"	10'

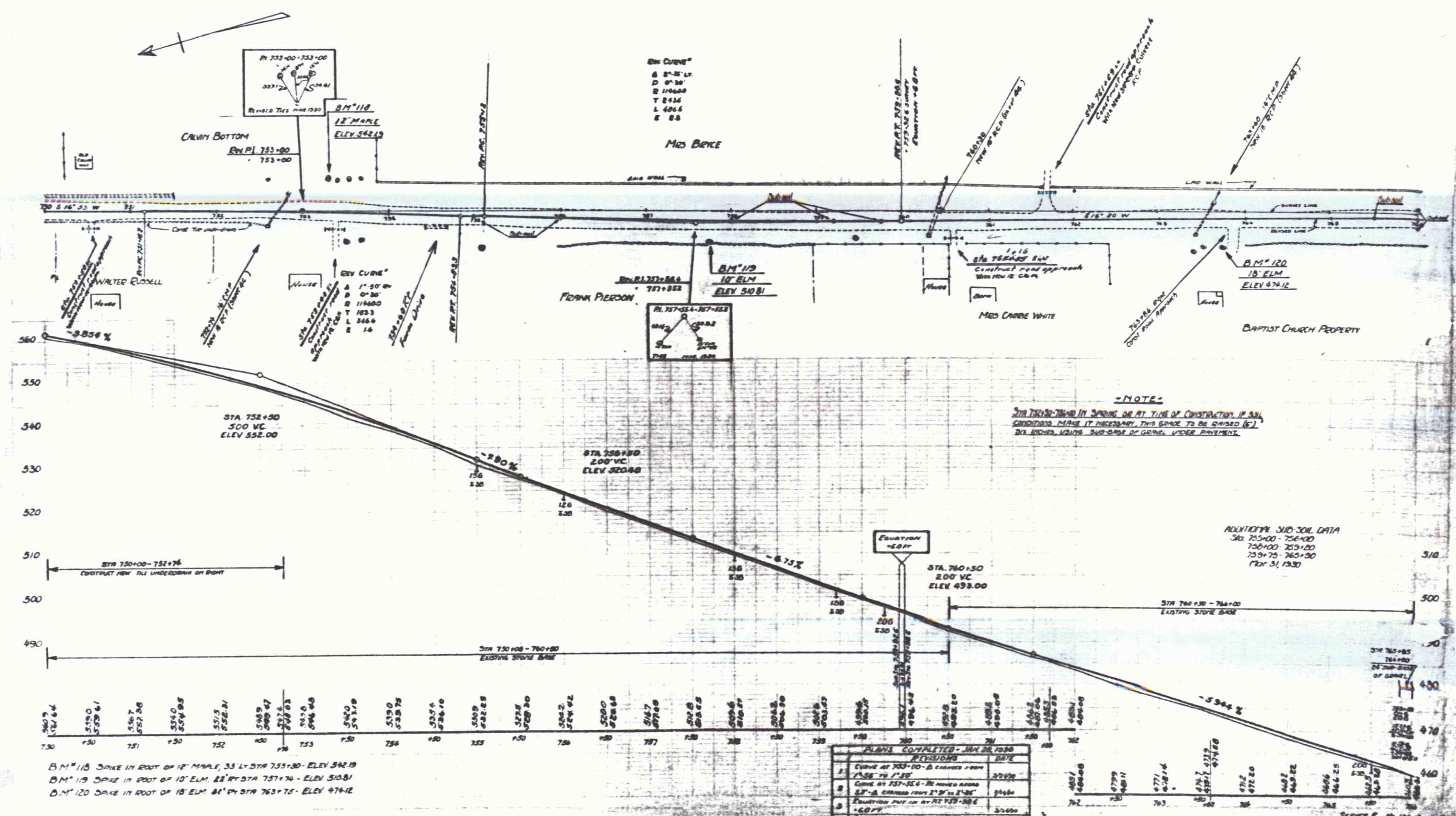
NEW 18" RCP REQUIRED

Sta.	Len.	Cont.	Fin. Size
750+00-751+50	150'	1.00	21"

DOWNWAY PIPE CULVERTS REQUIRED

STATION	LEFT	RIGHT	DI. FEET	SPACING
760+00	12'	12'	18"	10'
750+10	12'	12'	18"	10'
761+25	12'	12'	18"	10'
761+60	12'	12'	18"	10'
751+50	12'	12'	18"	10'

STATE OF MISSISSIPPI
 DIVISION OF HIGHWAYS
 PROJECT NO. 160-A-1930



B.M. 115 SPIKE IN ROOT OF 12" MAPLE, 33' LY STA 753+30 - ELEV 542.19
 B.M. 119 SPIKE IN ROOT OF 10" ELM, 23' LY STA 751+76 - ELEV 510.81
 B.M. 120 SPIKE IN ROOT OF 18" ELM, 81' LY STA 763+75 - ELEV 474.12

PLANS COMPLETED - JAN 28 1930

NO.	DESCRIPTION	DATE
1	Curve at 753+00 - 2 curves from 1/2" to 1/4"	3/22/29
2	Curve at 757+50 - 18' radius from 1/2" to 1/4"	3/24/29
3	Equation for STA 758+50	3/24/29
4	Base Elevation from 753+00 to 760+50	3/24/29

ADDITIONAL SUB-SOIL DATA
 Sta 755+00 - 756+00
 756+00 - 757+00
 757+00 - 760+50
 Feb 5, 1930

11