

**WOOD GUARD RAIL REQUIRED**

CHUCKY STATION	LEFT	RIGHT
677+10	24'	24'
682+00	24'	24'
685+78	24'	24'

**WOOD GUARD POSTS REQUIRED**

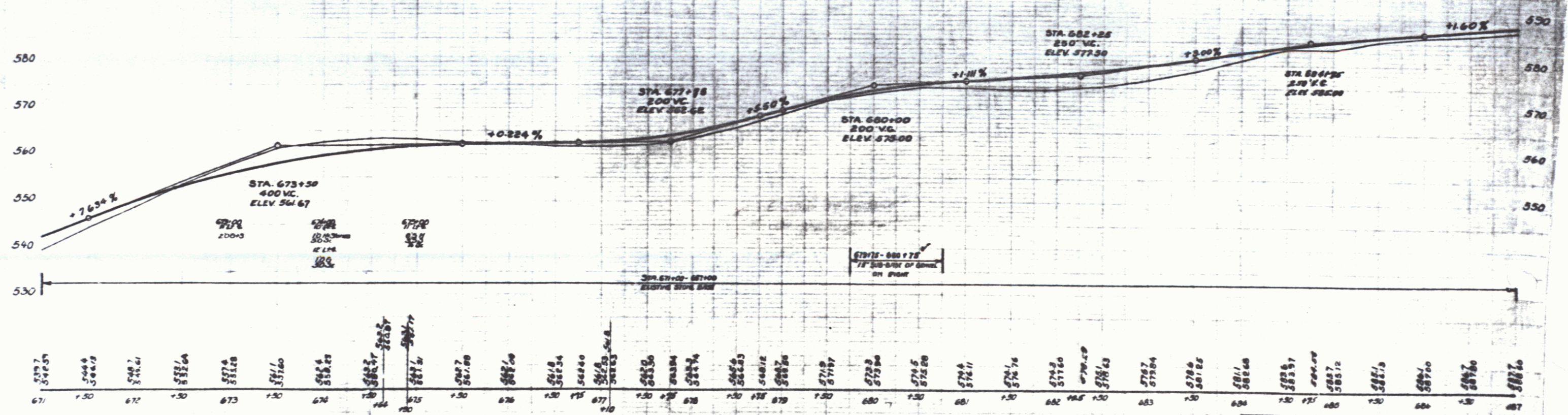
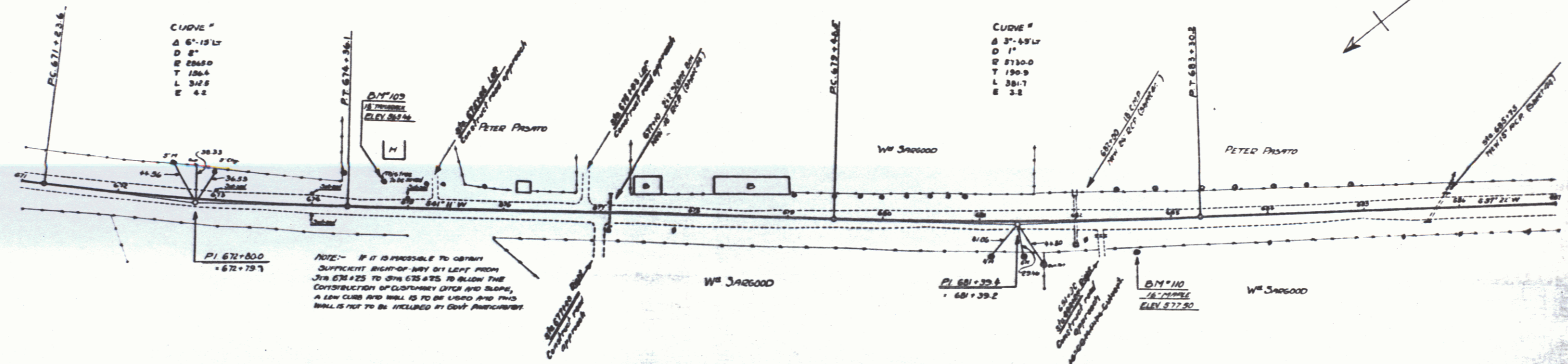
STATION	LEFT	RIGHT
677+10		
682+00		
685+78		

**NEW 6" CONC. PIPE CULVERTS REQUIRED**

STATION	LEFT	RIGHT	NO. 1	NO. 2
677+10	15'	24'	1	1
682+00	24'	24'	1	1
685+78	15'	24'	1	1

**DRAINAGE PIPE CULVERTS REQUIRED**  
(CLEAR GALV. METAL PIPE)

STATION	LEFT	RIGHT	NO. 1	NO. 2
677+10	15'	24'	1	1
682+00	24'	24'	1	1
685+78	15'	24'	1	1



B.M. 109 Spike in foot of 16" TAMPBRICK, 21' LY STA 674+72 - ELEV 563.96  
 B.M. 110 Spike in foot of 16" TAMPBRICK, 32' LY STA 682+64 - ELEV 577.50

DATE	1-21-30
DESIGNED BY	J. H. ...
CHECKED BY	...
APPROVED BY	...
PROJECT NO.	...
SHEET NO.	19 OF 128