

INDEX OF SHEETS

SHEET NO. 1	TITLE PAGE
2	TYPICAL CROSS-SECTION OF IMPROVEMENT
3	PLAN AND PROFILE STA. 0+00 TO STA. 16+00
4	" " " " 16+00 " " 32+00
5	" " " " 32+00 " " 46+85.5
6	BRIDGE - STA. 0+29
7 & 8	BRIDGE - STA. 14+04
9-14	CROSS-SECTIONS

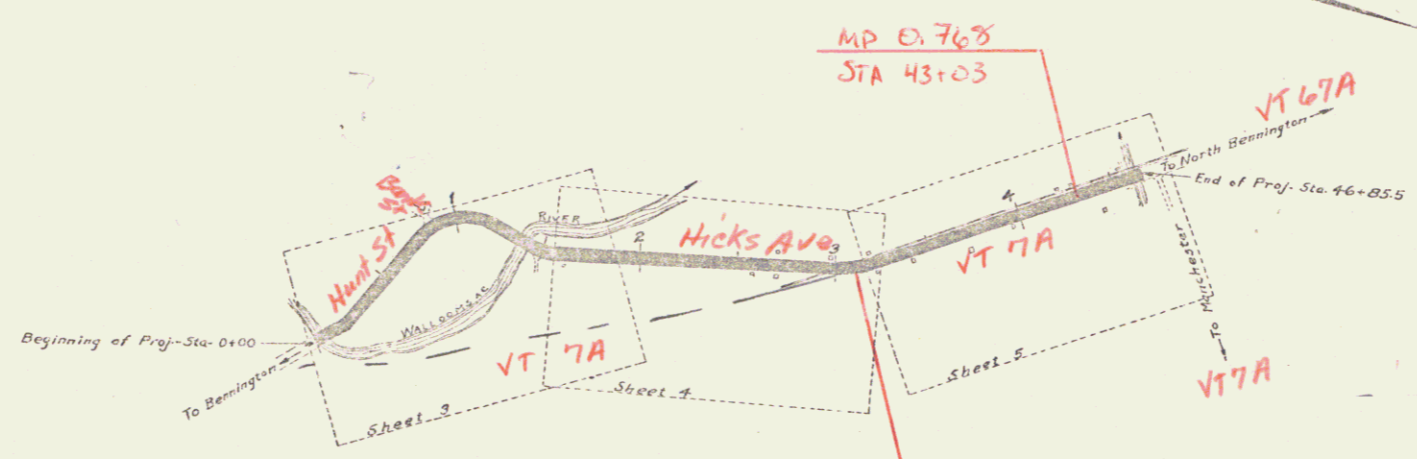
STATE OF VERMONT
STATE HIGHWAY DEPARTMENT

PLAN AND PROFILE OF PROPOSED
STATE HIGHWAY
FEDERAL AID PROJECT

TOWN OF BENNINGTON
NORTH BENNINGTON ROAD
FROM BENNINGTON VILLAGE LINE
TO PERCEY'S CORNER

Acq = 99R766

Plan - 1" = 200'±
Scales: Profile - 1" = 20'±
Cross-Sections - 1" = 50'±



LAYOUT
Scale - 500 FT. = 1 INCH

CONVENTIONAL SIGNS

COUNTY LINE	---	GROUND ELEVATION	81300	LINE
TOWN LINE	----	GRADE ELEVATION	81300	LINE
FENCE LINE	-----			
STONE WALL	-----			
UNFENCED PROPERTY	-----			
GUARD RAIL	-----			
TRAVELED WAY	-----			
RAILROAD	-----			
RETAINING WALL	-----			
BASE OR SURVEY LINE	-----			
CULVERT	-----			
DROP INLET	-----			
TROLLEY POLE	-----			
POWER POLE	-----			
TELEPHONE POLE	-----			
TREES	-----			
HEDGE	-----			

Project FAP 23
Pin # 99R766
Route VT 7A
Date 1/1/1920

RECOMMENDED _____
STATE ENGINEER
APPROVED _____
GOVERNOR
SUBMITTED _____
STATE HIGHWAY COMMISSIONER

RECOMMENDED _____
DISTRICT ENGINEER
BUREAU OF PUBLIC ROADS
RECOMMENDED FOR APPROVAL _____
CHIEF ENGINEER - BUREAU OF PUBLIC ROADS
APPROVED _____
DIRECTOR - BUREAU OF PUBLIC ROADS

RIGHT-OF-WAY DIVISION
TOWN FILE
PERPETUAL
Date of 057
(To Be Returned To R.O.W. Division)

Series F. No. 23 Filed
Sheet 2 of 10

SEARNS R. JENKINS 1157 1

GUARD RAIL REQUIRED

ON LEFT

Sta. 0+53 to Sta. 0+93	Length = 40 FT.
" 6+30 " " 6+54	" 24 "
" 9+25 " " 11+49	" 224 "
" 12+66.3 " " 13+70.3	" 104 "
" 14+11.3 " " 15+21.3	" 80 "

ON RIGHT

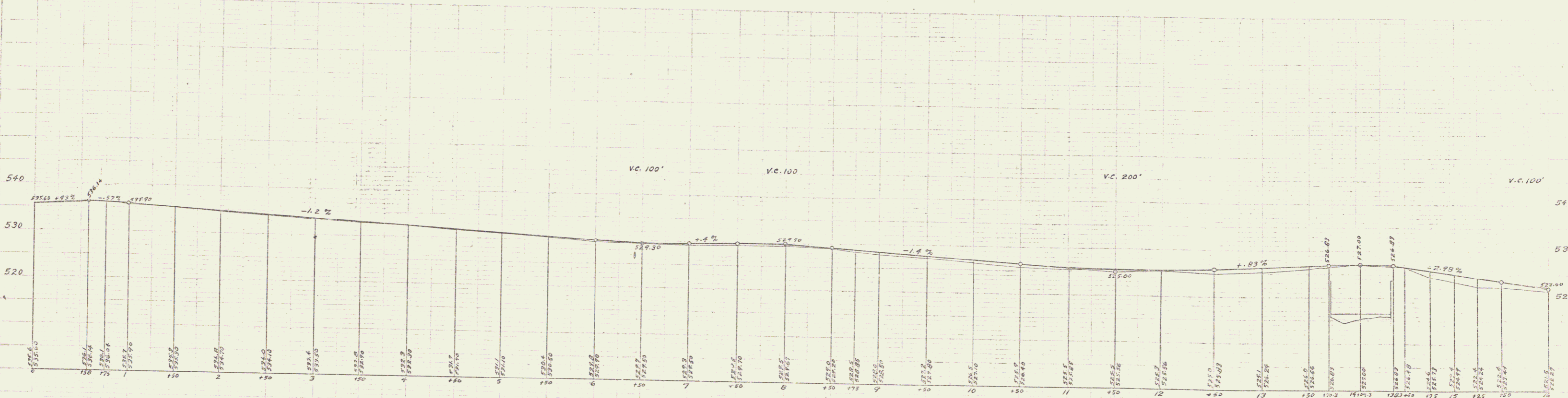
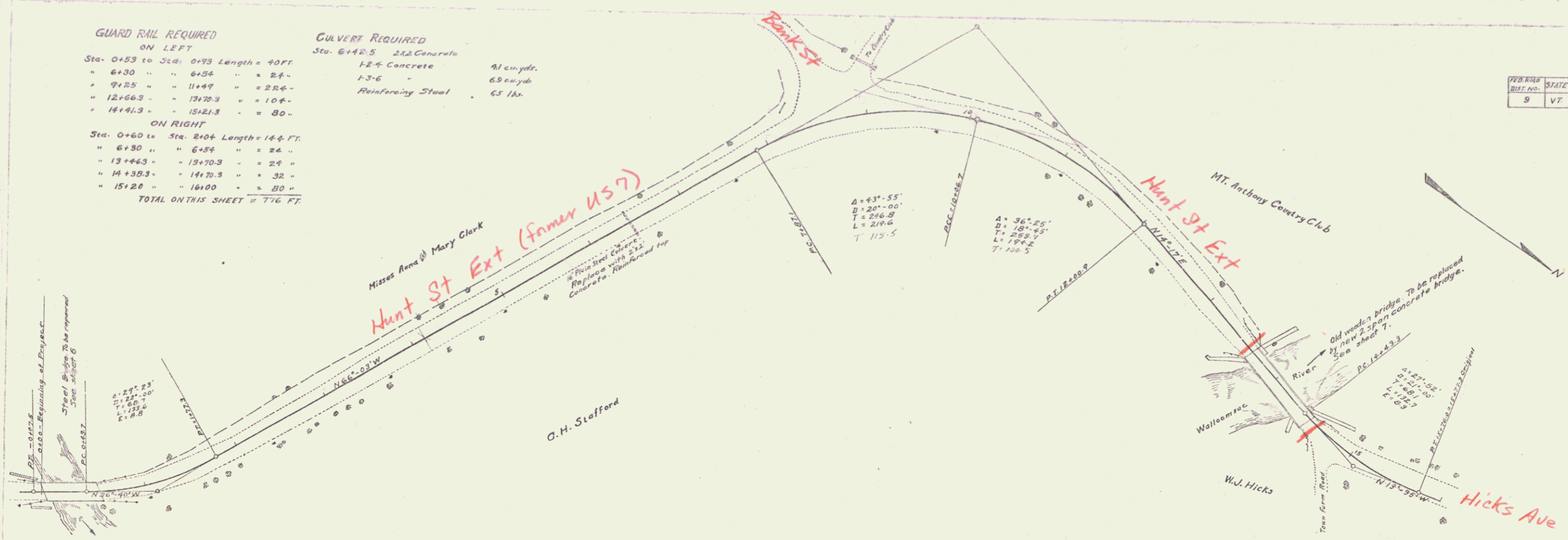
Sta. 0+60 to Sta. 2+04	Length = 144 FT.
" 6+30 " " 6+54	" 24 "
" 13+46.3 " " 13+70.3	" 24 "
" 14+38.3 " " 14+70.3	" 32 "
" 15+20 " " 16+00	" 80 "

TOTAL ON THIS SHEET = 776 FT.

CULVERT REQUIRED

Sta. 6+42.5	2x2 Concrete	41 cu. yds.
" 12+6	12-4 Concrete	65 cu. yds.
	Reinforcing Steel	65 lbs.

PROJECT	STATE	YEAR	SHEET NO.	TOTAL SHEETS
B	VT	23	1920	14



- B.M. Spike in Elm 18' S. of Sta. 1+35 - Elev. = 534.69
- B.M. Center of North Headwall of culvert on road to Country Club W. of 9+09 - Elev. = 527.87
- B.M. Spike in 40' Elm 16.5' W. of Sta. 12+91 - Elev. = 529.42
- B.M. Spike in Elm 27' W. of Sta. 15+51 - Elev. = 520.11

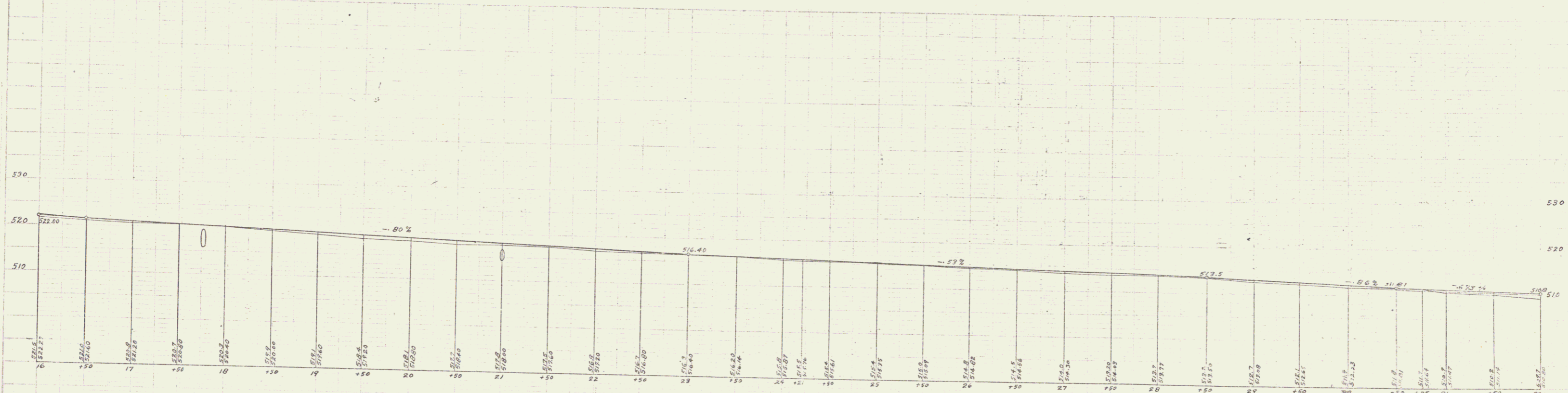
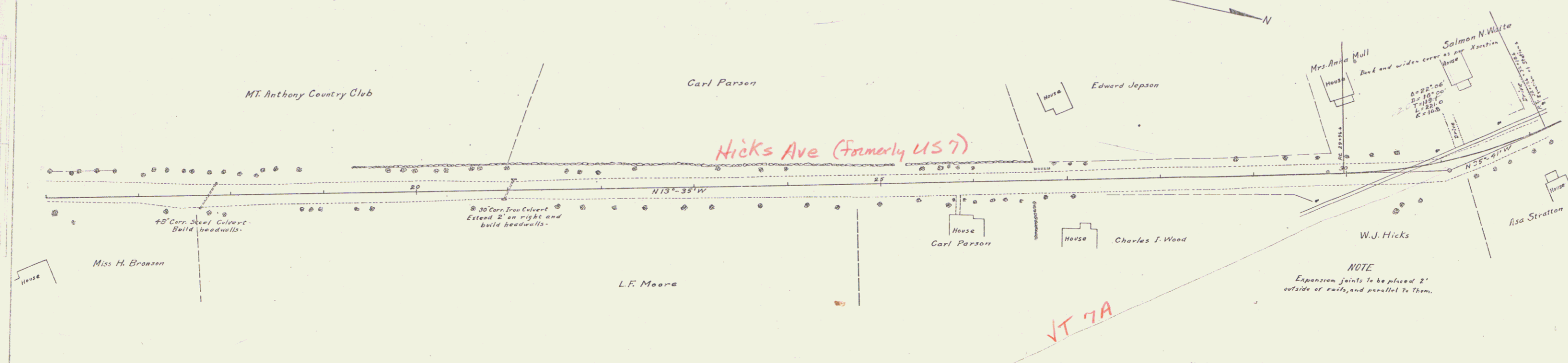
Series No. 23 Filed
Sheet 3 of 14

GUARD RAIL REQUIRED
 ON LEFT
 Sta. 17+72 to Sta. 17+96 Length 24 FT.
 " 20+92 " " 21+16 " 24 "
 ON RIGHT
 Sta. 17+52 to Sta. 17+76 " 24 FT.
 " 20+80 " " 21+04 " 24 "
 Total on this sheet 96 FT.

CULVERT REPAIRS REQUIRED
 Sta. 17+76-9 48" Corr. Steel
 1-2-4 Concrete Headwalls (18" thick) - 6.6 Cu. Yds.
 Sta. 21+00-2 30" Corr. Iron Length 2.0 FE
 1-2-4 Concrete Headwalls 3.2 Cu. Yds.

SUB-BASE REQUIRED
 Sta. 31+50 to Sta. 32+00 Length 50 ft.

FILE NO.	STATE	PROJECT	SHEET	DATE
9	VT.	23	1420	4 14

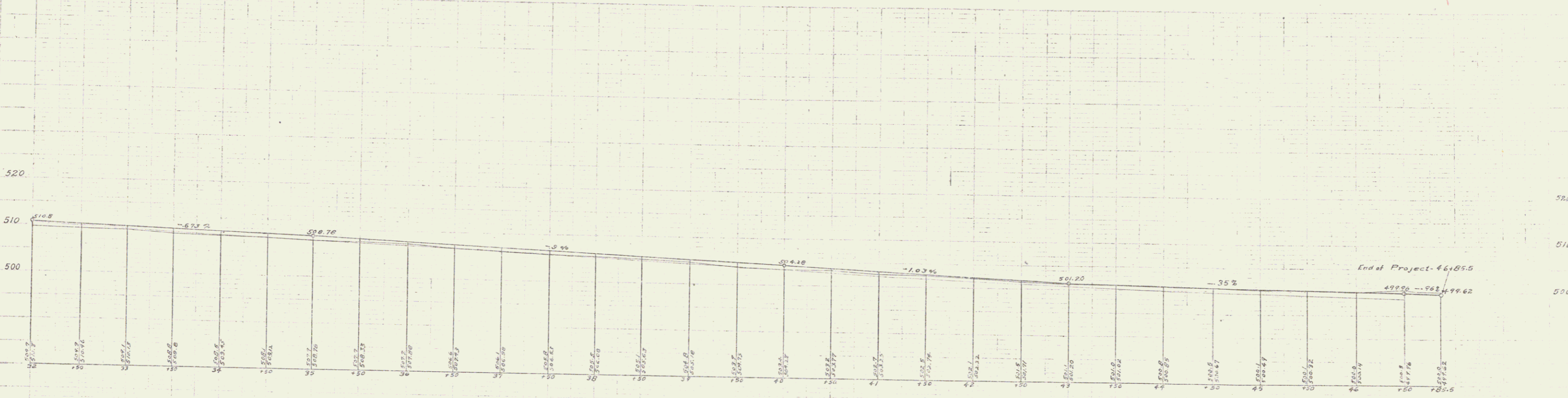
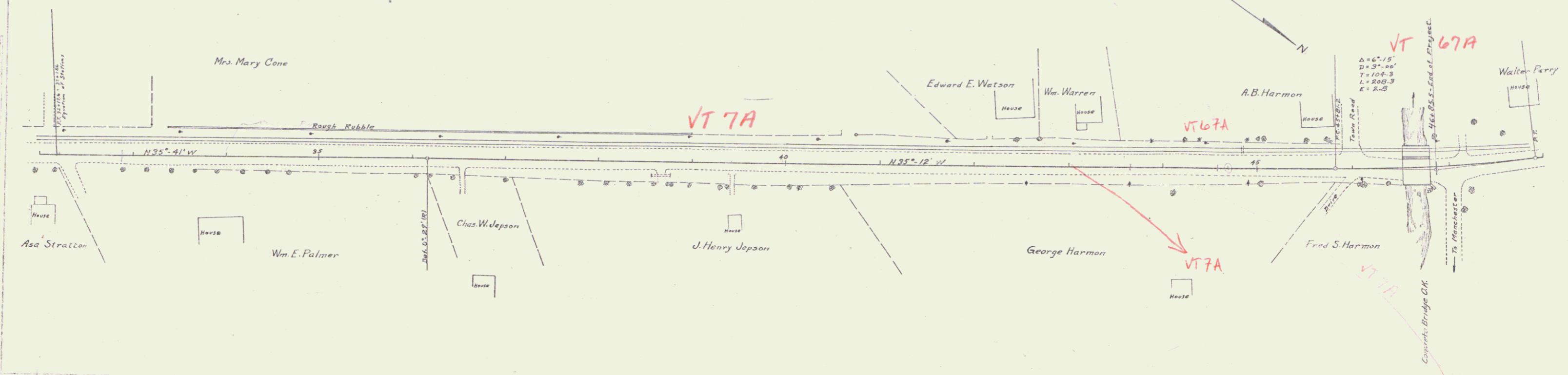


B.M. Spike in Elm 267' W. of Sta. 23+25 - Elev = 517.21
 B.M. Spike in Elm 18' E. of Sta. 31+31 - Elev = 511.43

NOTE
 Expansion joints to be placed 2' outside of rails, and parallel to them.

SUB-BASE REQUIRED
Sta. 32+00 to Sta. 90+00 Length 580 R.

YEAR	STATE	FED. AID	PERCENTAGE	TOTAL
BUILD	YEAR	YEAR	AMOUNT	AMOUNT
9	VT	23	1920	5 14



U.S. GEOLOGICAL SURVEY
 DISTRICT OF VERMONT
 VERMONT STATE ENGINEER
 U.S. GEOLOGICAL SURVEY
 DISTRICT OF VERMONT
 VERMONT STATE ENGINEER