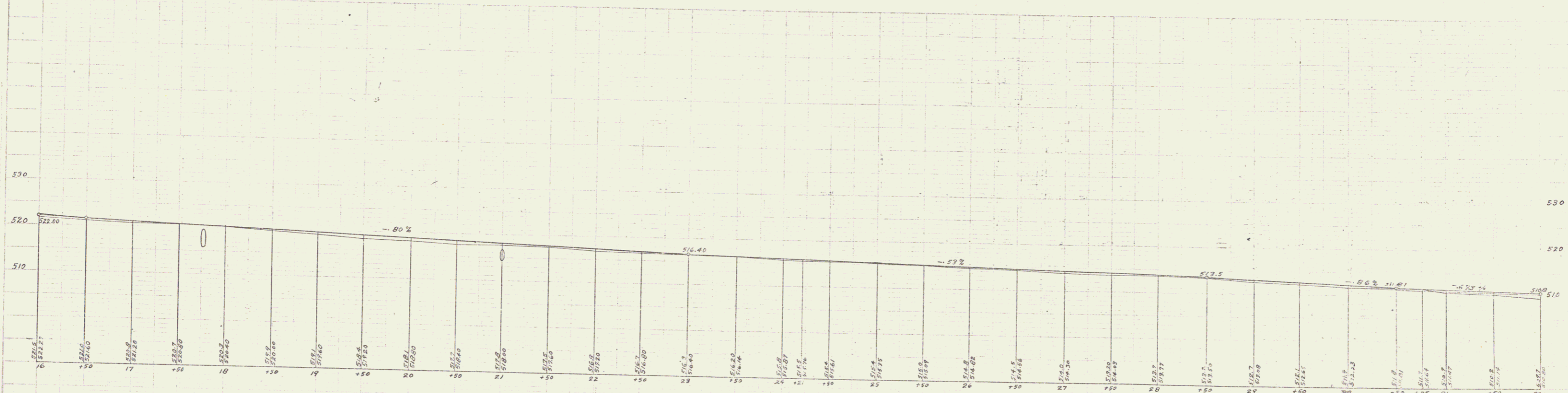
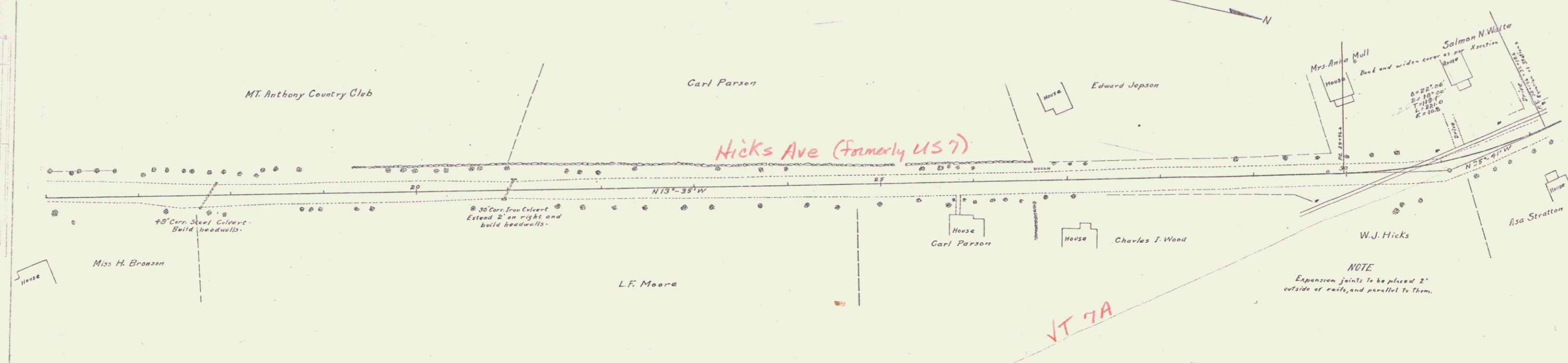


**GUARD RAIL REQUIRED**  
 ON LEFT  
 Sta. 17+72 to Sta. 17+96 Length 24 FT.  
 " 20+92 " " 21+16 " 24 "  
 ON RIGHT  
 Sta. 17+52 to Sta. 17+76 " 24 FT.  
 " 20+80 " " 21+04 " 24 "  
 Total on this sheet 96 FT.

**CULVERT REPAIRS REQUIRED**  
 Sta. 17+76-9 48" Corr. Steel  
 1-2-4 Concrete Headwalls (18" thick) - 6.6 Cu. Yds.  
 Sta. 21+00-2 30" Corr. Iron Length 2.0 FE  
 1-2-4 Concrete Headwalls 3.2 Cu. Yds.

**SUB-BASE REQUIRED**  
 Sta. 31+50 to Sta. 32+00 Length 50 ft.

| FILE NO. | STATE | FILE NO. | PROJECT | DATE | NO. |
|----------|-------|----------|---------|------|-----|
| 9        | VT.   | 23       | 1920    | 4    | 14  |



B.M. Spike in Elm 267' W. of Sta. 23+25 - Elev = 517.21  
 B.M. Spike in Elm 18' E. of Sta. 31+31 - Elev = 511.43