

INDEX OF SHEETS

SHEET NO.	1	TITLE PAGE
	2	TYPICAL CROSS-SECTION OF IMPROVEMENT DOUBLE TRACK COAT OF REFINED TAR WITH PEAS STONE SEAL (CLASS A) ITEM 32-4 MOD.
	3	BANKING AND WIDENING TABLES
	4	QUANTITY SHEET (ITEMS AND DRAINAGE)
	5-6	EARTHWORK SHEETS
	7	CONSTRUCTION DETAILS CD (DRAINAGE AND MARKERS)
	8	CONSTRUCTION DETAILS CD-1 (DITCHES)
	9	CONSTRUCTION DETAILS CD-2 (TYPICAL GRADING)
	10	STANDARD STRUCTURE SHEET S 48-48 (THREE CABLE GUARD RAIL)
	11	STANDARD STRUCTURE SHEET S 40 (BARRICADES, SIGNS AND LIGHTS)
	12	STANDARD STRUCTURE SHEET S 53-48 (PRECAST R.C.P. DROP INLETS)
	13-17	PLAN AND PROFILE SHEETS
	18-33	CROSS-SECTIONS

STANDARD STRUCTURE SHEET APPROVED BY THE CHIEF ENGINEER, VERMONT STATE DEPARTMENT OF HIGHWAYS
S-40 JUNE 10, 1950

STATE OF VERMONT
DEPARTMENT OF HIGHWAYS

PROPOSED IMPROVEMENT

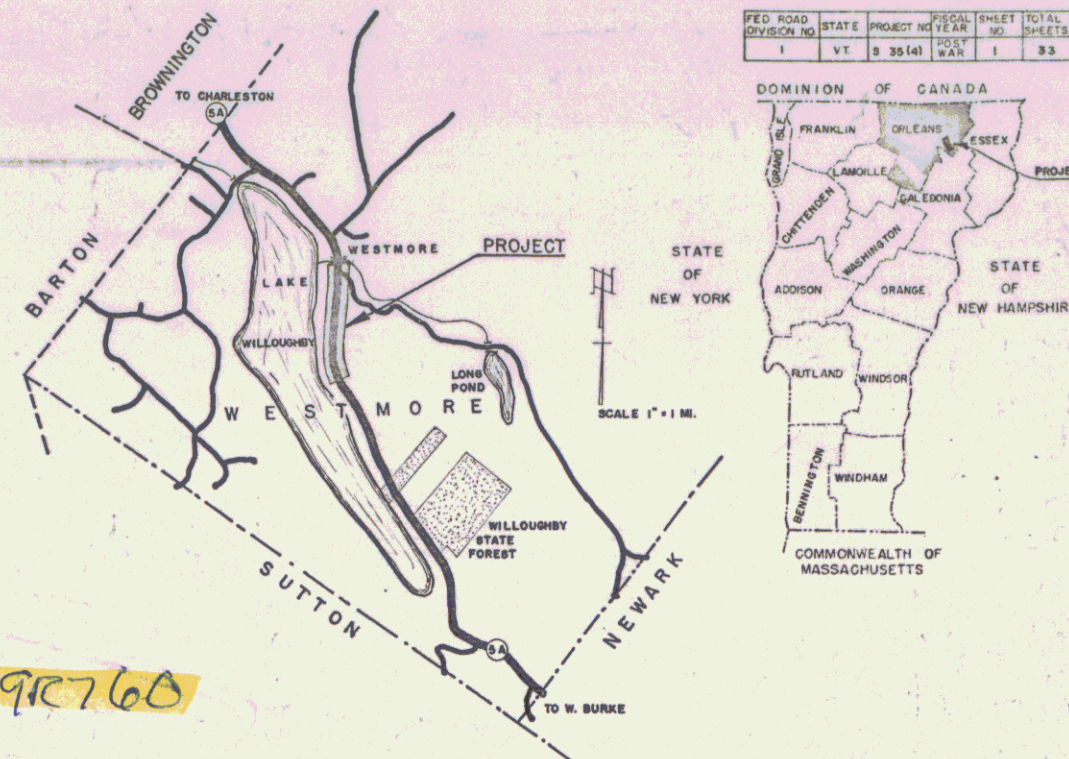
FEDERAL AID SECONDARY PROJECT

TOWN OF WESTMORE

COUNTY OF ORLEANS

VERMONT ROUTE 5A

WEST BURKE-CHARLESTON ROAD



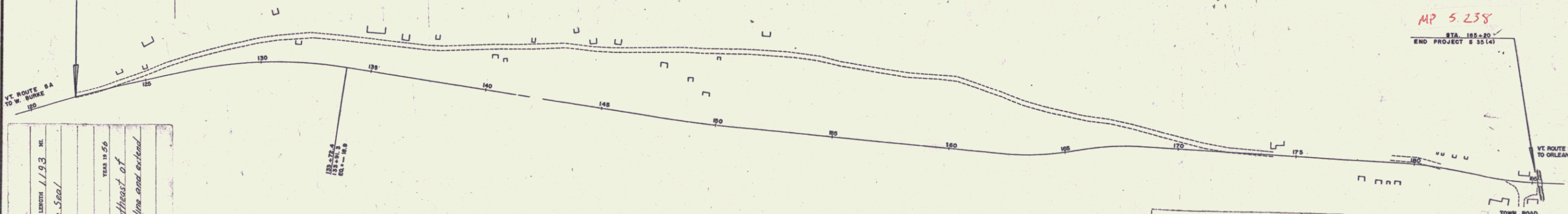
BEGINNING AT A POINT APPROXIMATELY 16,809.1 FEET
SOUTHEAST OF THE BROWNINGTON-WESTMORE TOWN LINE
AND EXTENDING NORTHERLY 6301.1 FEET.
LENGTH OF PROJECT 6301.1 FEET = 1.193 MILES

Pin# 998760

PROJECT NAME & NUMBER	TYPE	PAVEMENT AREA
Westmore 535 (4)	Dbl. Tk. Tar & Peasstone	14,649 S.Y.
RECORD PLANS MATERIALS		
Subbase of Gravel - Huntan Pit, Westmore	AC&C&P - Berger Metal Culvert Co., Westmaster	
Crushed Gravel - Coe Pit, Brighton	Grade Posts - Bethlehem Steel Co.	
Refined Tar - Koppers Products Co., Everett, Mass.	Guard Rail Cable - Am. Steel & Wire Co., New Haven, Conn.	
Peasstone for Seal - Coe Pit, Brighton	Guard Rail Paint - Burgess-Farbes, Portland, Me.	
Cement - Dragon Portland Cement, Thomaston, Me.	Winter Rye - E.T. & H.K. Lyle, St. Johnsbury	
Stone for C.R.M. - Reed Quarry, De-ly	Goly Water Pipe - Chas. Millard & Sons, St. Johnsbury	
R.C.P. - Vt. Concrete Pipe Corp., Windsor		
Contractor - Lewis & Scott, Johnson, Vt.	Contract Dated August 11, 1955	
Resident Engineer - A. Graham	Contract Started August 11, 1955	
Inspectors - J. Smyrsky & Lombard, M. Lawson, & Hopkins	Contract Completed July 26, 1956	
Record Plans - W. B. Lowe	Contract Accepted July 26, 1956	

MP 4.046
STA. 122+00
END PROJECT 535 (4)

RIGHT-OF-WAY DIVISION
TOWN FILE
PERPETUAL
Town of Westmore
(To Be Returned To R.O.W. Division)



PROJECT: Westmore
NUMBER: 535 (4)
TYPE: Dbl. Tk. Tar & Peasstone Seal
CONTRACTOR: Lewis & Scott
LOCATION: Begins approx. 16,809.1 ft. southeast of Brownington-Westmore town line and extend northerly 6,301.1 ft.
Record Plans W.B. Lowe
Construction Completed July 26, 1956

CURVE DATA	
DEFLECTION OF ANGLE	Δ
DEGREE OF CURVE	D
RADIUS OF CURVE	R
TANGENT DISTANCE	T
LENGTH OF CURVE	L
EXTERNAL DISTANCE	E
POINT OF INTERSECTION	P.I.
POINT OF CURVE	P.C.
POINT OF TANGENT	P.T.
POINT ON TANGENT	P.O.T.
POINT ON SUB-TANGENT	P.O.S.T.

SCALES	
TITLE	1" = 200'
TYPICAL	1" = 20'
PLAN	1" = 80'
PROFILE HORIZONTAL	1" = 50'
PROFILE VERTICAL	1" = 10'
CROSS-SECTIONS	1" = 5'

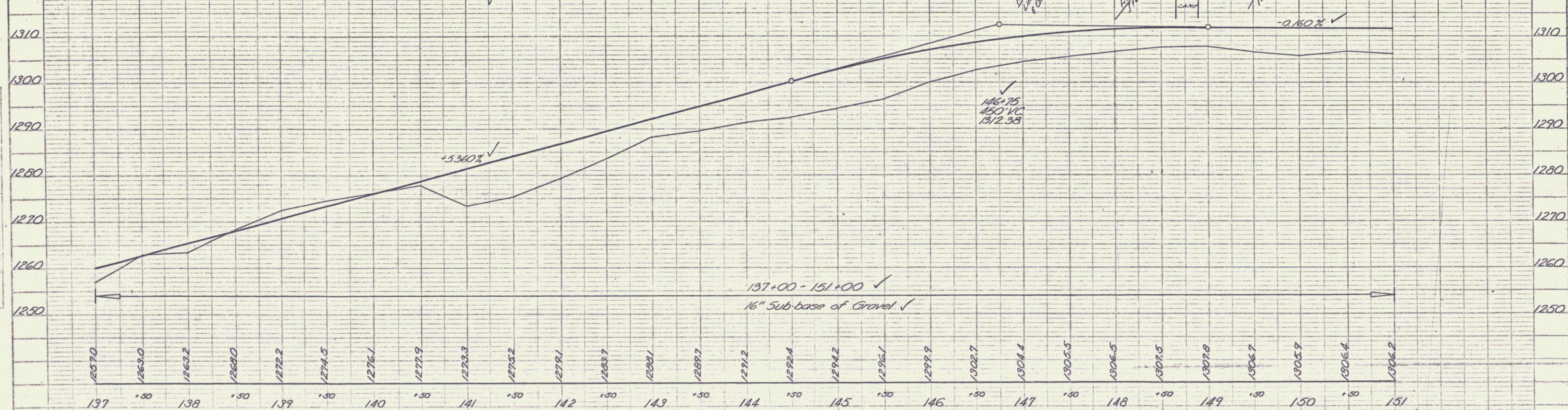
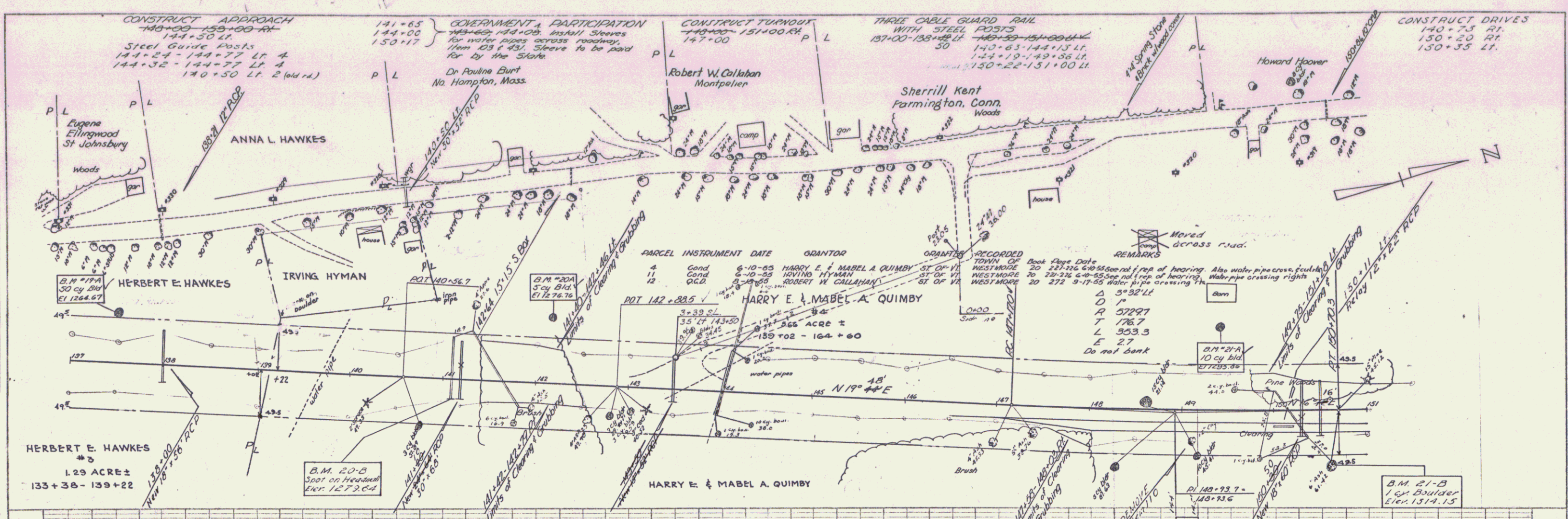
NOTE: ANY FURTHER INFORMATION CONCERNING FINAL QUANTITIES, AMOUNTS OR OTHER DETAILS RELATIVE TO THIS PROJECT MAY BE FOUND IN EITHER THE FIELD BOOKS OR THE ESTIMATE FILE.

THESE PLANS ARE SUBJECT TO SUCH REVISIONS AS MAY BE REQUIRED BY THE BUREAU OF PUBLIC ROADS OR THE COMMISSIONER OF HIGHWAYS.
CONSTRUCTION IS TO BE CARRIED ON IN ACCORDANCE WITH THE PLANS AND THE STANDARD ROAD AND BRIDGE SPECIFICATIONS OF 1948, AS APPROVED JULY 25, 1949 BY THE BUREAU OF PUBLIC ROADS, INCLUDING ALL SUBSEQUENT APPROVED REVISIONS AND SUCH REVISED SPECIFICATIONS AND SPECIAL PROVISIONS AS ARE SUBMITTED WITH THE PLANS.

DEPARTMENT OF COMMERCE
BUREAU OF PUBLIC ROADS

APPROVED DATE July 11, 1955	APPROVED DATE Feb 8, 1956	APPROVED DATE 2/7/55	APPROVED DATE July 11, 1955	APPROVED DATE Feb 8, 1956
SUBMITTED BY ORDER OF THE STATE HIGHWAY BOARD				

APPROVED
DISTRICT ENGINEER
DATE
PROJECT S NO. 35 (4)
SHEET 1 OF 33 SHEETS



PLAN

DATE: _____

SCALE: _____

NOTE: SEE SHEET 33 FOR CONTINUATION

PROFILE

DATE: _____

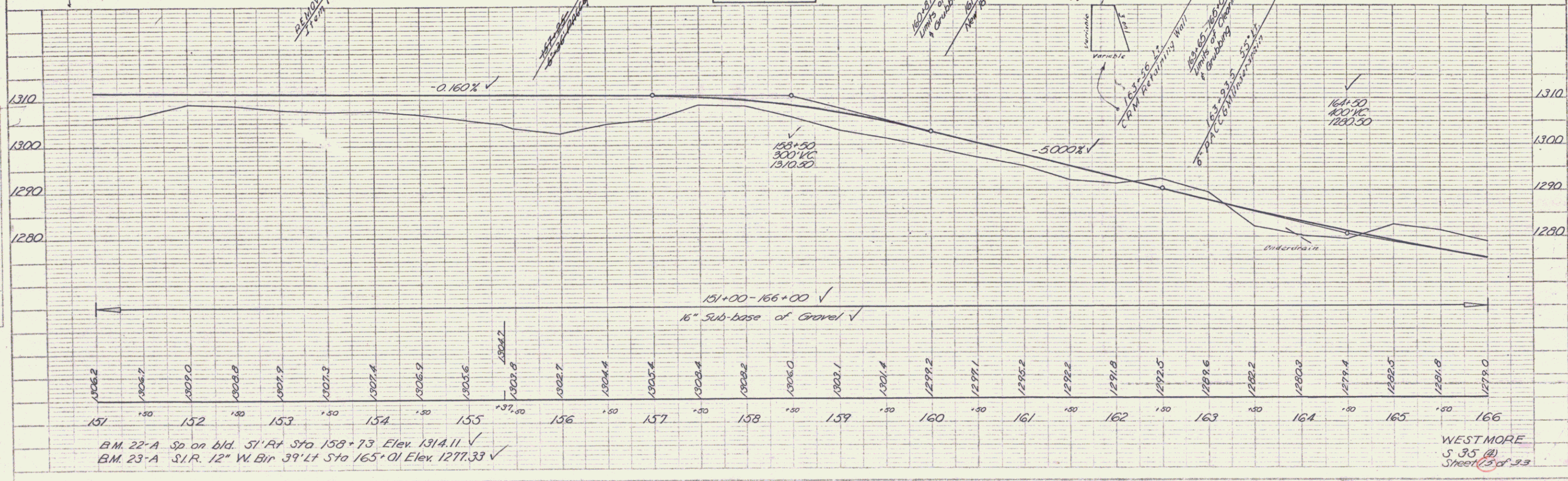
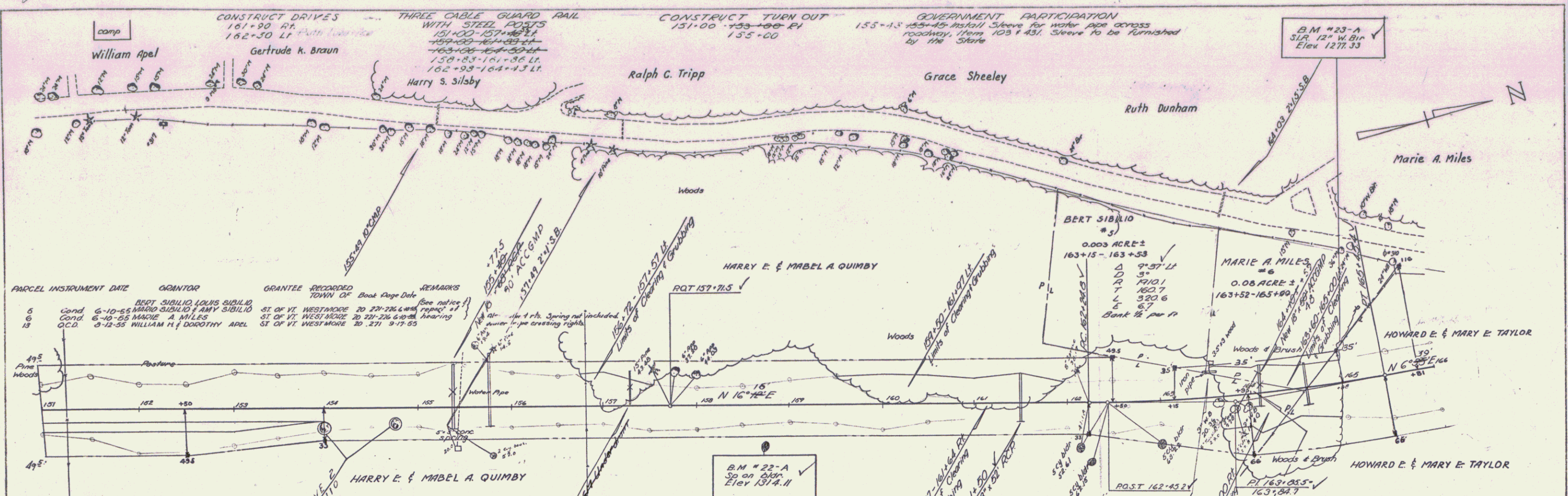
SCALE: _____

NOTE: SEE SHEET 33 FOR CONTINUATION

B.M. 17-A Sp. on 50' cy. bld. 60' H. Sta. 137+50 Elev. 1264.67
 B.M. 20-A Sp. on 50' cy. bld. 70' H. Sta. 142+17 Elev. 1276.76
 B.M. 21-A Sp. on 100' cy. bld. 94' H. Sta. 149+44 Elev. 1295.66
 B.M. 20-B Sp. on Head. 16' H. Station 141+10 Elev. 1279.64
 B.M. 21-B 1' cy. Boulder 60' H. Station 150+45 Elev. 1314.15

WESTMORE
 S. 35 (A)
 Sheet 34 of 33

PLATE 1 - PLAN - PROFILE & P. & C. STANDARD
 U.S. GEOLOGICAL SURVEY
 WASHINGTON, D. C. 20540



PLAN	DATE	BY
REVISIONS		
NO. 1	DATE	DESCRIPTION
NO. 2	DATE	DESCRIPTION
NO. 3	DATE	DESCRIPTION

PROFILE	DATE	BY
REVISIONS		
NO. 1	DATE	DESCRIPTION
NO. 2	DATE	DESCRIPTION
NO. 3	DATE	DESCRIPTION

GOVERNMENT PARTICIPATION
 171+25' - install sleeves for water pipes
 175+17' across roadway, from 103' & 43' sleeves
 to be furnished by the State.

THREE CABLE GUARD RAIL WITH STEEL POSTS
 167+25 - 170+77 Lt. 50
 167+25 - 170+77 Lt. 50

STEEL GUIDE POSTS
 160+50 - 172+99 Lt. 10
 177+23 - 173+34 Lt. 8

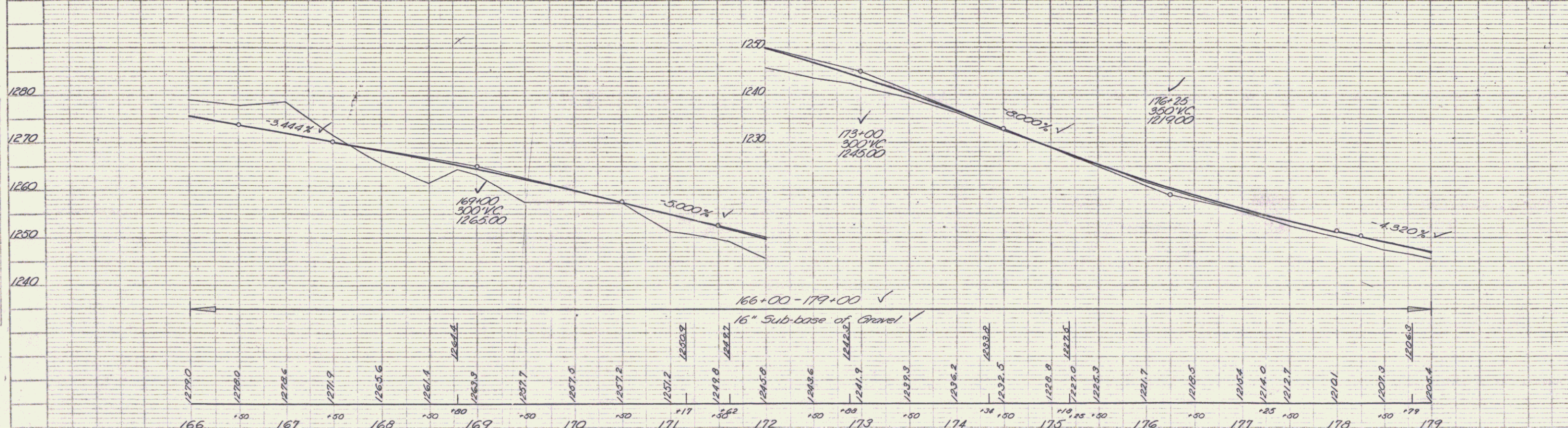
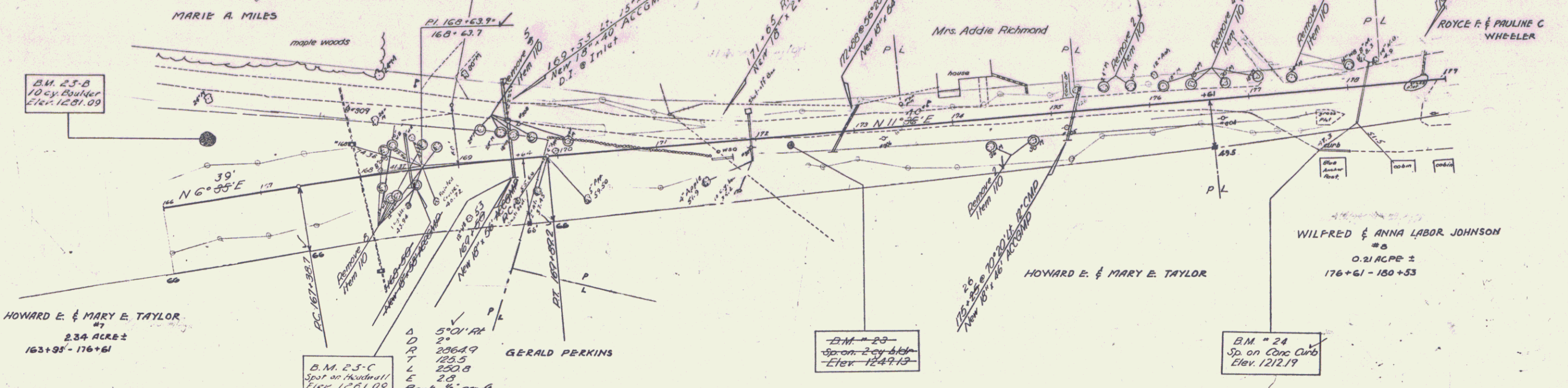
CONSTRUCT APPROACH
 167+50 - 171+50 Lt.
 176+50 - 177+00 Rt.
 163+00 - 172+00 Lt.
 177+15 - 178+70 Rt.

CONSTRUCT DRIVES
 177+25 Lt.
 171+63 Rt.
 172+38 Lt.
 172+53 Lt.
 177+20 Lt.

CONSTRUCT TURNOUT
 178+10 - 179+00 Lt.

PARCEL INSTRUMENT DATE DATE GRANTEE GRANTEE TOWN OF
 7 JUDGMENT ORDER 19067 1-3-36 HOWARD E. & MARY E. TAYLOR SI OF VI. OGLEBORN COUNTY COURT
 8 7-30-38 WILFRED & ANNA JOHNSON SI OF VI. WESTMORE 20 267 9-17-55
 Remarks: Also water pipe crossing & cutout rights.
 Control of section of old Highway between Station 126+23 and Station 189+00 Lt. relinquished to Town of Westmore. Recorded book 20, page 359, 14 December, 1956

FILE NO. _____
 DATE _____
 DRAWN BY _____
 CHECKED BY _____
 IN CHARGE _____
 NOTE BOOK ACCOUNT CHECKED _____
 NO. OF SHEETS _____
 SHEET NO. _____



B.M. 23 Sp. on 2 cy bldg 6' Rt of Sta 172+35 Elev. 1249.13
 B.M. 24 Sp. on conc curb 6' Rt of Sta 177+66 Elev. 1212.19
 B.M. 23-B Sp. on 10 cy Boulder 53' Lt. Sta. 166+55 Elev. 1231.09
 B.M. 23-C Sp. on Haulmill 15' Rt. Sta. 167+50 Elev. 1261.09

WESTMORE
 S. 35 (A)
 Sheet 16 of 33

