

GOVERNMENT PARTICIPATION
 171+25' - install sleeves for water pipes
 175+17' across roadway, from 103' & 43' sleeves
 to be furnished by the State.

THREE CABLE GUARD RAIL WITH STEEL POSTS
 167+25 - 170+77 Lt. 50
 167+25 - 170+77 Lt. 50

STEEL GUIDE POSTS
 160+50 - 172+99 Lt. 10
 177+23 - 173+34 Lt. 8

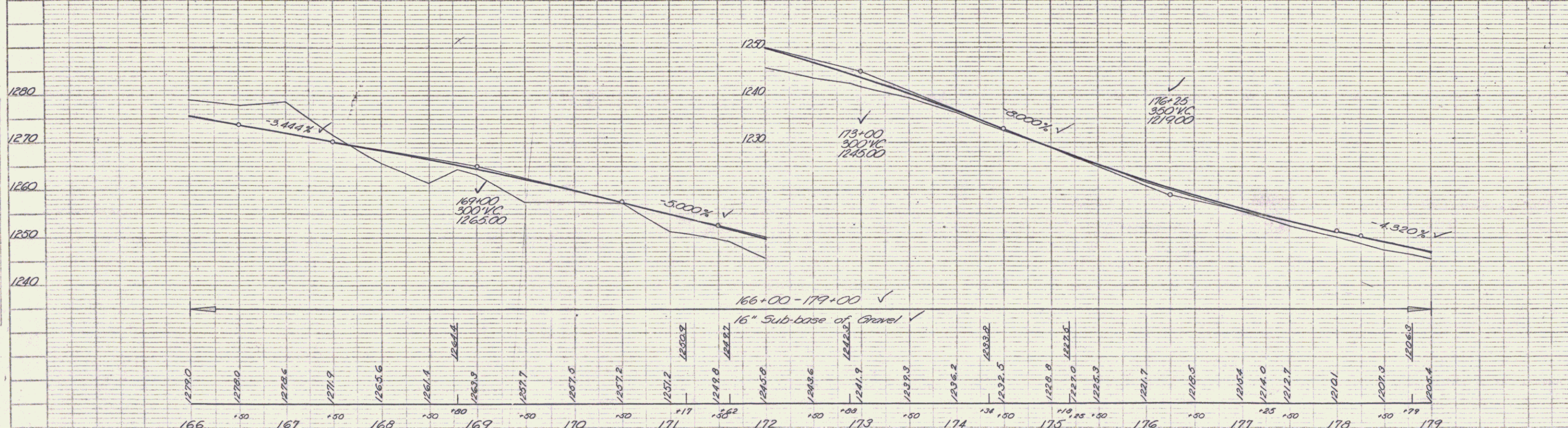
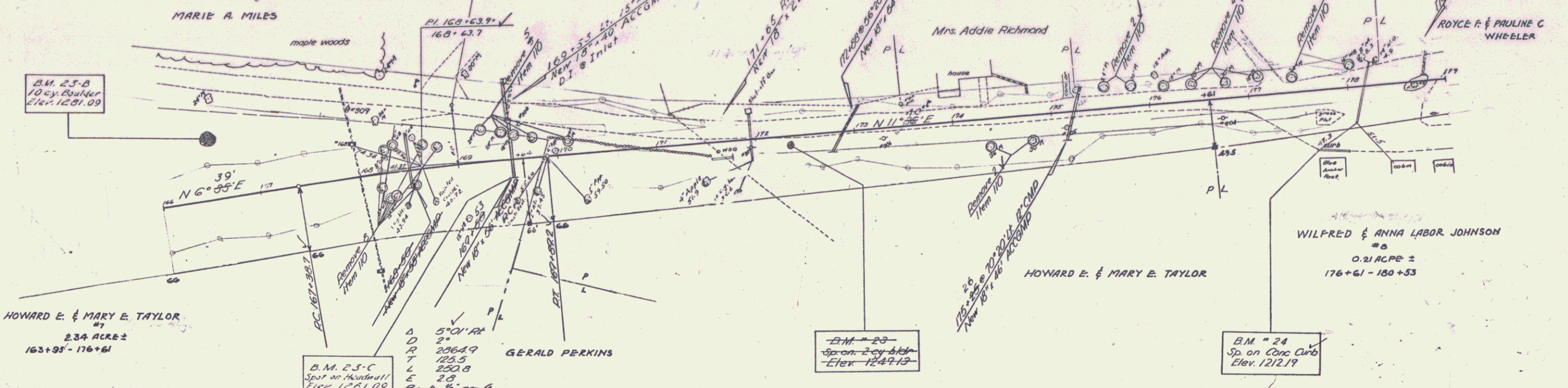
CONSTRUCT APPROACH
 167+50 - 171+50 Lt.
 176+50 - 177+00 Rt.
 163+00 - 172+00 Lt.
 177+15 - 178+70 Rt.

CONSTRUCT DRIVES
 177+25 Lt.
 171+63 Rt.
 172+38 Lt.
 172+53 Lt.
 177+20 Lt.

CONSTRUCT TURNOUT
 178+10 - 179+00 Lt.

PARCEL INSTRUMENT DATE DATE GRANTEE GRANTEE TOWN OF
 7 JUDGMENT ORDER 19067 1-3-36 HOWARD E. & MARY E. TAYLOR SI OF VI. OLEANS COUNTY COURT
 8 7-30-58 WILFRED & ANNA JOHNSON SI OF VI. WESTMORE 20 267 9-17-55
 Remarks: Also water pipe crossing & cutout rights.
 Control of section of old Highway between
 Station 126+23 and Station 189+00 Lt.
 relinquished to Town of Westmore.
 Recorded book 20, page 359, 14 December, 1956

FILE NO.
 PROJECT NO.
 SHEET NO.
 DATE
 DRAWN BY
 CHECKED BY
 IN CHARGE



B.M. 23 Sp. on 2 cy bldg 6' Rt of Sta 172+35 Elev. 1249.13
 B.M. 24 Sp. on conc. curb 6' Rt of Sta 177+66 Elev. 1212.19
 B.M. 23-B Spot on 10 cy Boulder 53' Lt. Sta. 166+55 Elev. 1231.09
 B.M. 23-C Spot on Haulmill 15' Rt. Sta. 167+50 Elev. 1261.09

WESTMORE
 S. 35 (A)
 Sheet 16 of 33