

PARCEL INSTRUMENT DATE GRANTOR GRANTEE RECORDED BOOK PAGE DATE

3 W.D. 6-17-54 HOWARD E. TAYLOR ST. of Vt. WESTMORE 19 101 6-26-54

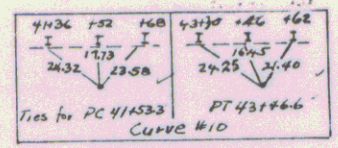
REMARKS THREE CABLE GUARD RAIL WITH STEEL POSTS 30'00 LT - 45'00 LT

SEE ALSO SHEETS 12, 13, 14.

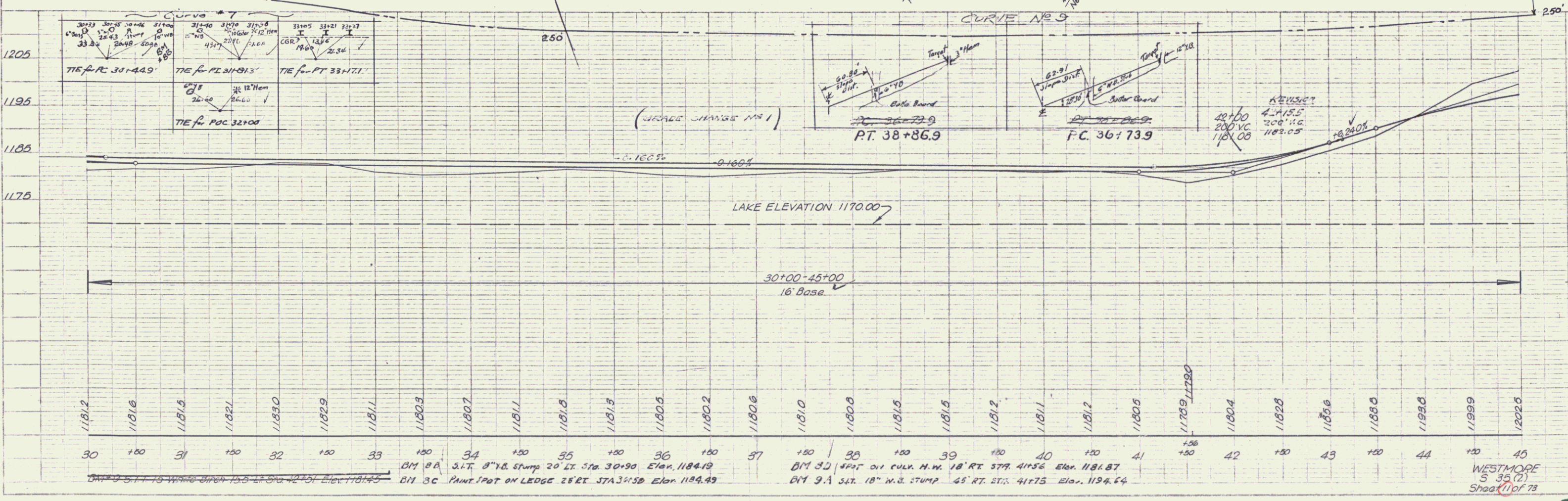
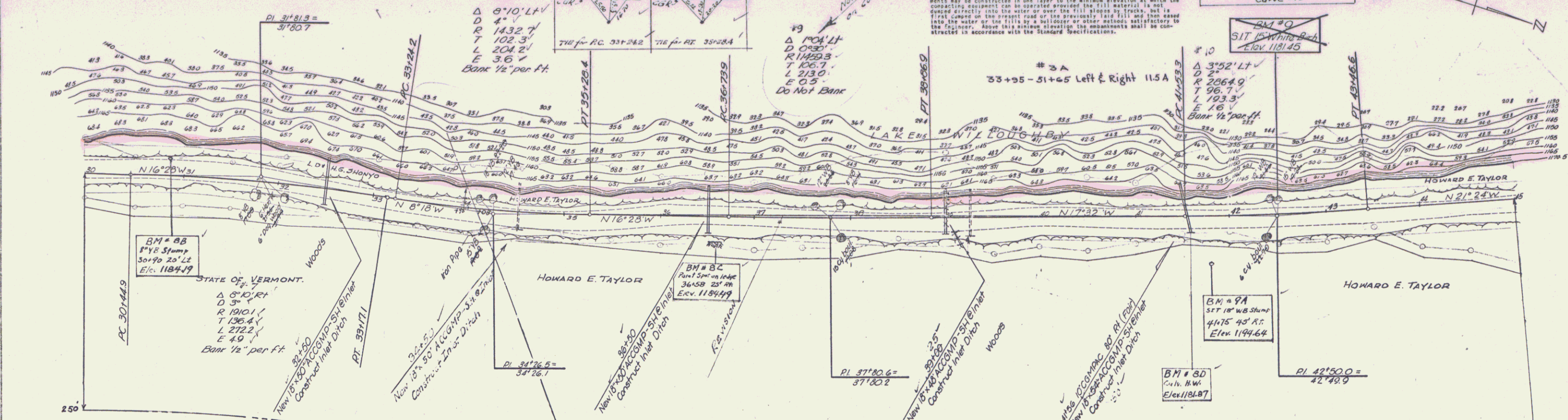
EMBANKMENTS
 Any fill placed in the water, throughout the entire length of the project, shall be first covered on the original ground or previously laid fill, and then added into the water by a bulldozer or other methods satisfactory to the Engineer.

APPROPRIATE STATIONS 31 + 00 TO 106 + 00 LEFT

All embankments that are below elevation 1175 between appropriate station 31 + 00 to 106 + 00 shall be constructed 1175 feet from the station on the project and suitable to the Engineer. For use under conditions not specified, in layers of specified thickness is not feasible, the embankments may be constructed in one layer to the minimum elevation at which the contacting equipment can be operated provided the fill material is not dumped directly into the water or over the fill slope by trucks, but is first covered on the project road or the previously laid fill, and then added into the water or the fill by a bulldozer or other methods satisfactory to the Engineer. About this minimum elevation the embankments shall be constructed in accordance with the Standard Specifications.



PLAN
 DATE: 11/53
 DRAWN BY: [Name]
 CHECKED BY: [Name]



PROFILE
 DATE: 11/53
 DRAWN BY: [Name]
 CHECKED BY: [Name]