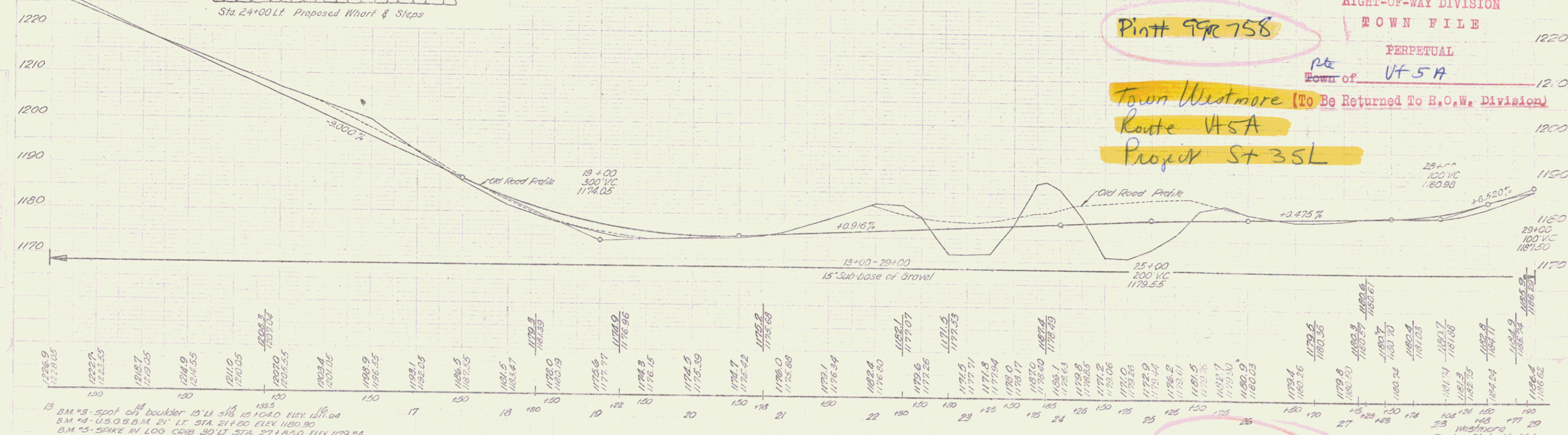
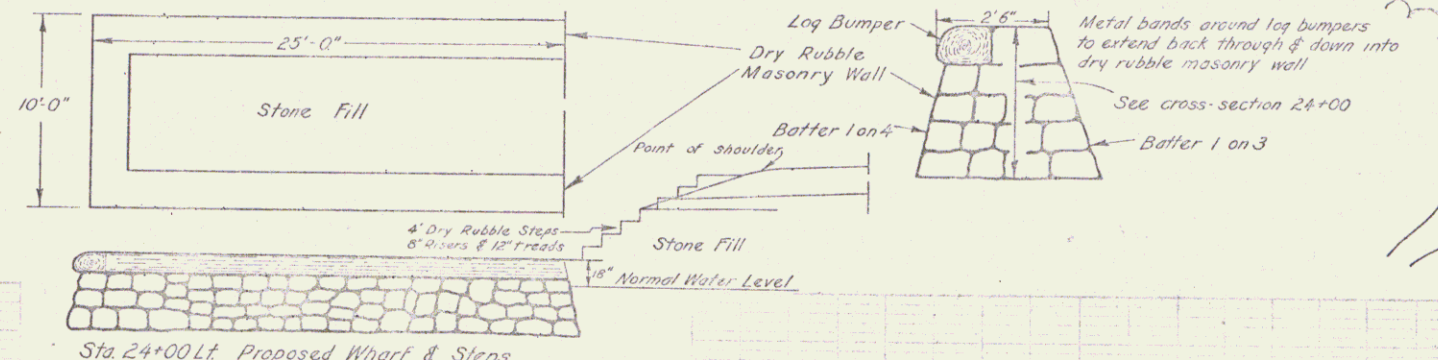
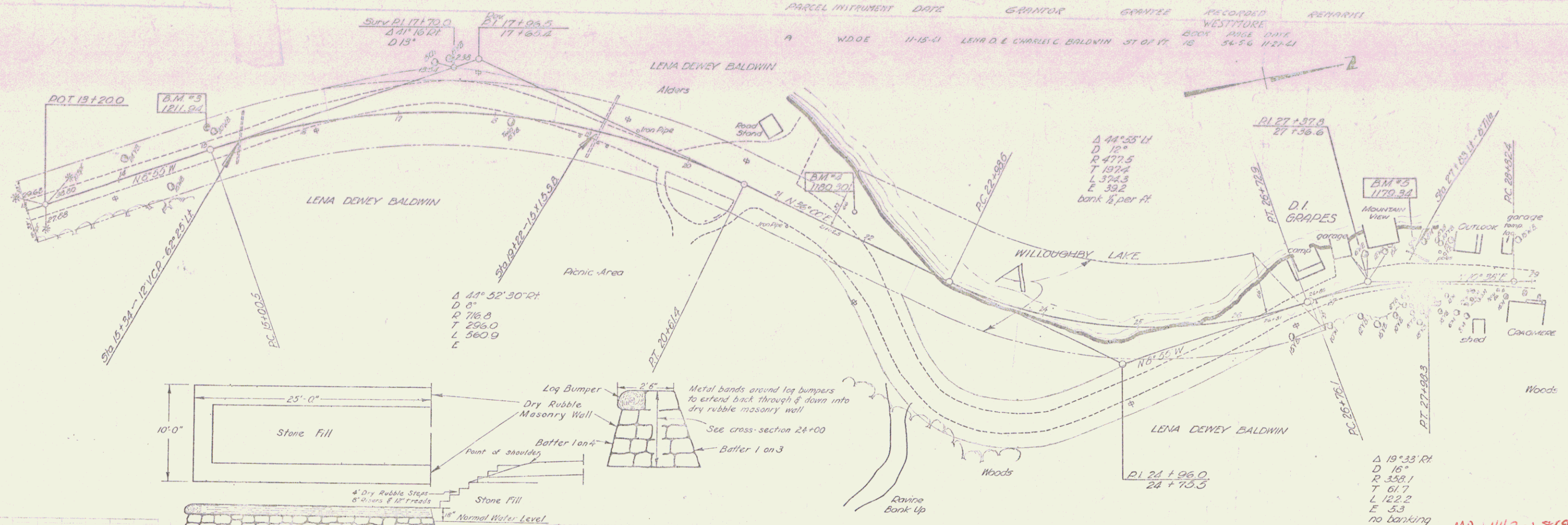


PARCEL INSTRUMENT DATE GRANTOR GRANTEE RESCORDED REMARKS
 A W.D.O.E. 11-15-01 LENA D. E. CHARLE C. BALDWIN ST OF VT 13 54-56 1121-41 WESTMORE BOOK PAGE DATE
 13 54-56 1121-41



Platt 99c 758
 RIGHT-OF-WAY DIVISION
 TOWN FILE
 PERPETUAL
 Town of **VT 5A**
 Town Westmore (To Be Returned To R.O.W. Division)
 Route **VT 5A**
 Project **St 35L**

13 B.M. #3 - spot on boulder 15' x 3 1/2' x 10' 10" 10" ELEV 1211.94
 14 B.M. #4 - U.S.G.S. 2 1/2" x 2 1/2" LT STA 21+20 ELEV 1180.90
 15 B.M. #5 - SPIKE IN LOG CRIB 30' LT STA 27+80 ELEV 1179.34

101141

DIST. # 9 PANS