

INDEX OF SHEETS		
SHEET NO.	TITLE PAGE	
1	TITLE PAGE	
2	TYPICAL CROSS-SECTION OF IMPROVEMENT 3" CRUSHED GRAVEL MIXED-IN-PLACE SURFACE COURSE WITH CUTBACK ASPHALT AND PRIME COAT OF REFINED TAR ITEM 242, MOD.	
3	BANKING AND WIDENING TABLES	
4	QUANTITY SHEET (ITEMS AND DRAINAGE)	
5	EARTHWORK SHEET	
6	CONSTRUCTION DETAILS CD (DRAINAGE AND MARKERS)	
7	CONSTRUCTION DETAILS CD-1 (DITCHES)	
8	STANDARD STRUCTURE SHEET SB-11 (BARRICADES, SIGNS AND LIGHTS)	
9	STANDARD STRUCTURE SHEET S-47-45 (DROP INLETS AND HEADWALL)	
10	STANDARD STRUCTURE SHEET S-48-46 (THREE CABLE GUARD RAIL W/STEEL POSTS)	
11	STANDARD STRUCTURE SHEET SB-20	
12	BRIDGE PLAN (SCALE 1"=20')	
13-14	DETAILS OF 20' X 7'-4" CORR. GALV. METAL PLATE ARCH	
15	REINFORCING STEEL SCHEDULE	
16-18	CHANNEL SECTIONS	
19	PLAN AND PROFILE SHEET	
20-25	CROSS-SECTIONS	

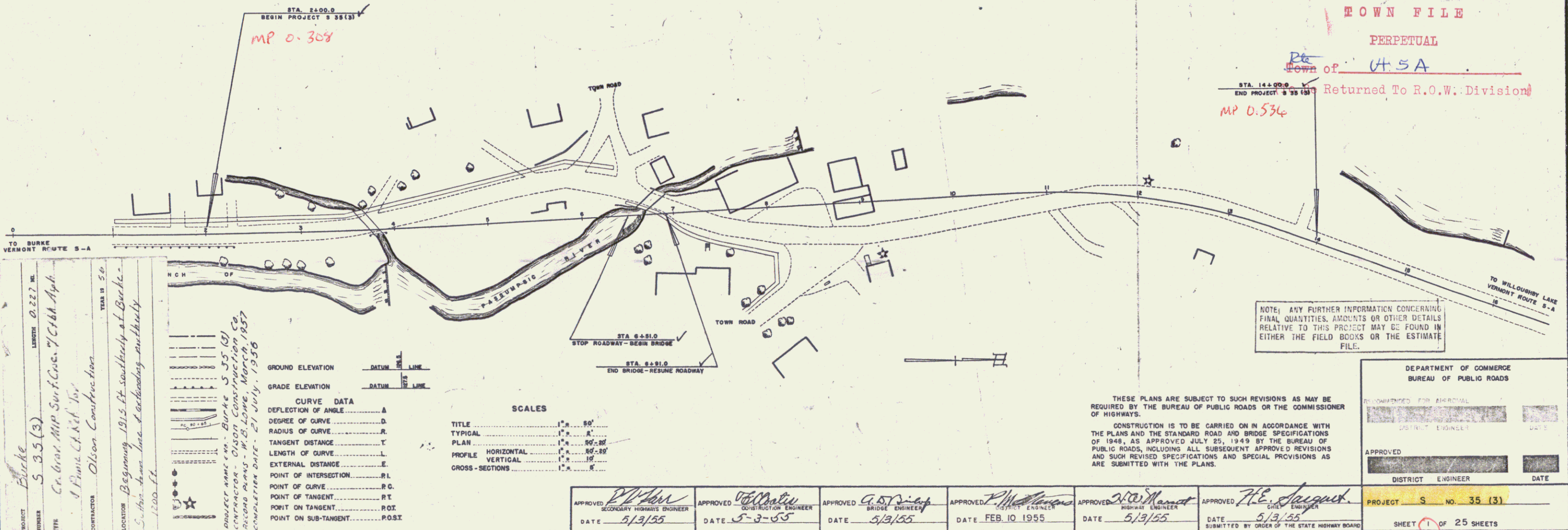
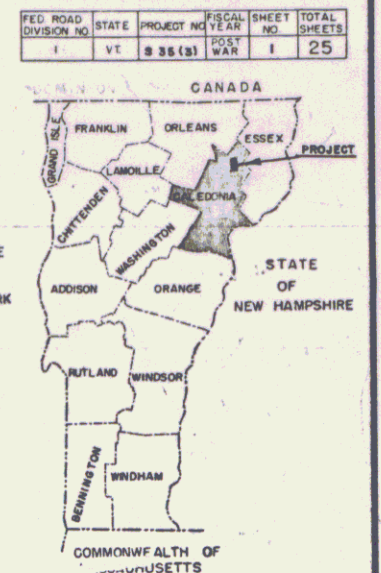
PROJECT NAME & NUMBER	TYPE	PAVEMENT AREA
Burke S 35 (3)	M.I.P.	2667

RECORD PLANS	
MATERIALS	
SUB-BASE - 4" TRAVEL - Cross Div., Burke, VT	REINFORCING STEEL - Vermont Structural Steel Corp., Burlington, VT
GRAVEL FC - SHOULDERS - Fairbanks Pit #2, Burke	STRUCTURAL STEEL - Steel Corp., Burlington, VT
CRUSHED GRAVEL - Caledonia Sand & Gravel Co., Pittsford, VT	PLATE ARCH - New England Metal Culvert Co., Acamungton, Mass.
CUTBACK ASPHALT - Secor Vacuum Oil Co., East Providence, R.I.	ACCUMULATED - Vermont Concrete Pipe Co., Windsor, VT
REFINED TAR - Rodgers Co. Inc., Everett, Mass.	CABLE FOR GUARD RAIL - Bethlehem Steel Corp., Bethlehem, Pa.
LEASSTONE FOR SEAL - Caledonia Sand & Gravel Co., Pittsford, VT	
LEASMENT - Long Star, Hudson, NY	
CONTRACTOR - Olson Const., Montpelier	CONTRACT DATED - 24 June 1955
RESIDENT - Eng R. Hunt, A. Graham	CONTRACT STARTED - 13 July 1955
INSPECTORS - None	CONTRACT COMPLETED - 21 July 1956
RECORD PLANS - W.B. Lowe, March, 1957	CONTRACT ACCEPTED - 21 July 1956

STATE OF VERMONT
DEPARTMENT OF HIGHWAYS
PROPOSED IMPROVEMENT
 FEDERAL AID SECONDARY PROJECT
TOWN OF BURKE
 COUNTY OF CALEDONIA
VERMONT ROUTE 5-A
WEST BURKE-WESTMORE ROAD

BEGINNING AT . . . POINT 1915 FEET SOUTH OF THE
 SUTTON-BURKE TOWN LINE AND EXTENDING NORTHERLY
 1200 FEET
 LENGTH OF ROADWAY 1/60.0 FEET + 0.220 MI.
 LENGTH OF BRIDGE 40.0 FEET + 0.007 MI.
 LENGTH OF PROJECT 1,200.0 FEET + 0.227 MI.

Plot # 992753



PROJECT Burke
 DISTRICT S 35 (3)
 TYPE Co. Grav. M.P. Surf. Conc. 7" C14th. Apr.
 CONTRACTOR Olson Construction
 LOCATION Beginning 1915 ft. south of Burke
 5.160 - 5.160 - 5.160 - 5.160 - 5.160 - 5.160
 1200 ft.

CURVE DATA	
DEFLECTION OF ANGLE	Δ
DEGREE OF CURVE	D
RADIUS OF CURVE	R
TANGENT DISTANCE	T
LENGTH OF CURVE	L
EXTERNAL DISTANCE	E
POINT OF INTERSECTION	PI
POINT OF CURVE	P.C.
POINT OF TANGENT	P.T.
POINT ON TANGENT	PO.T
POINT ON SUB-TANGENT	PO.S.T.

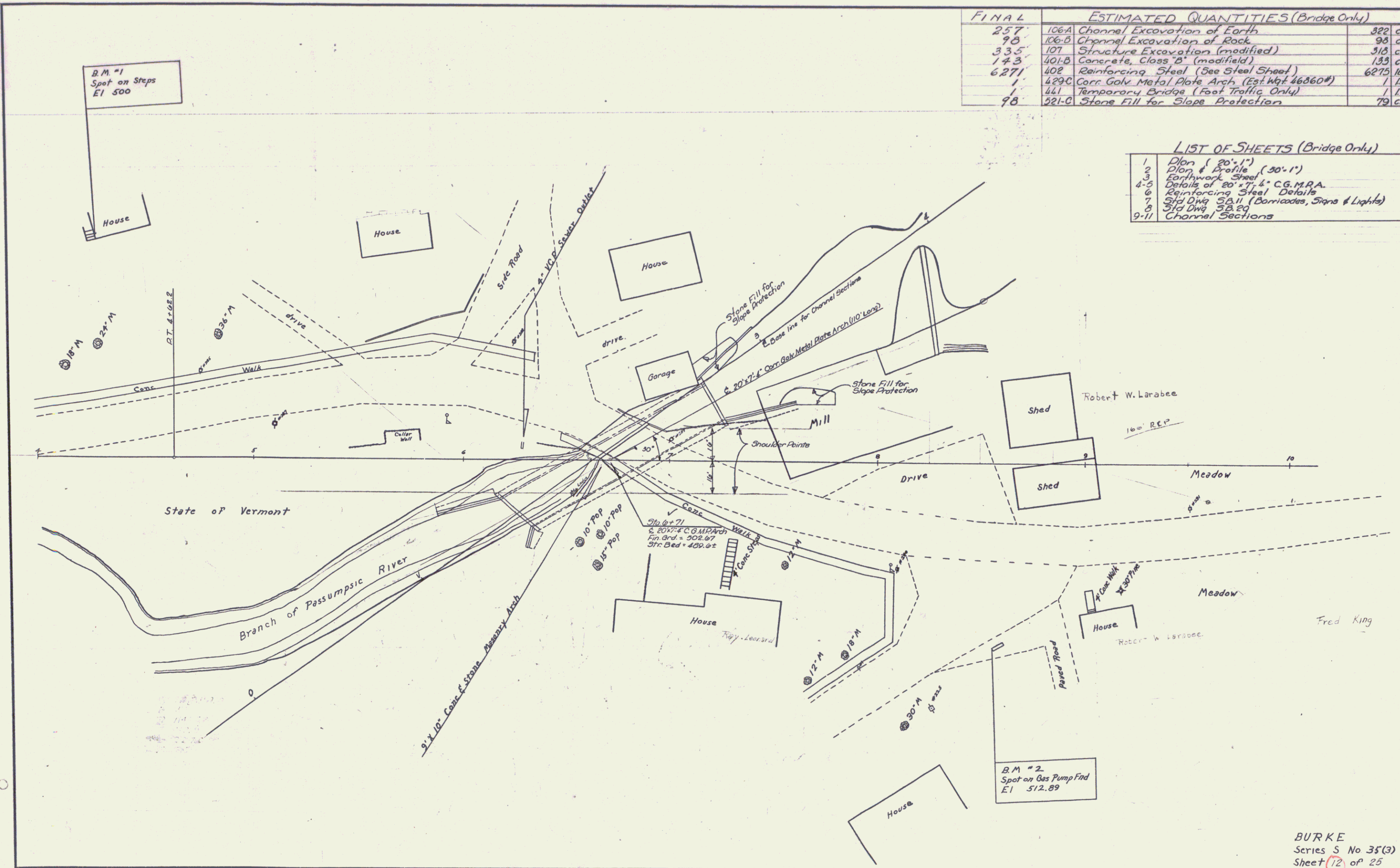
SCALES	
TITLE	1" = 50'
TYPICAL	1" = 50'
PLAN	1" = 50'-00"
PROFILE HORIZONTAL	1" = 50'-00"
VERTICAL	1" = 10'
CROSS-SECTIONS	1" = 5'

APPROVED <i>[Signature]</i> SECONDARY HIGHWAY ENGINEER DATE 5/3/55	APPROVED <i>[Signature]</i> CONSTRUCTION ENGINEER DATE 5-3-55	APPROVED <i>[Signature]</i> BRIDGE ENGINEER DATE 5/3/55	APPROVED <i>[Signature]</i> CONSULTING ENGINEER DATE FEB. 10 1955	APPROVED <i>[Signature]</i> HIGHWAY ENGINEER DATE 5/3/55	APPROVED <i>[Signature]</i> CIVIL ENGINEER DATE 5/3/55
--	---	---	---	--	--

NOTE: ANY FURTHER INFORMATION CONCERNING FINAL QUANTITIES, AMOUNTS OR OTHER DETAILS RELATIVE TO THIS PROJECT MAY BE FOUND IN EITHER THE FIELD BOOKS OR THE ESTIMATE FILE.

RIGHT-OF-WAY DIVISION
 TOWN FILE
 PERPETUAL
 Down of HSA
 Returned To R.O.W. Division

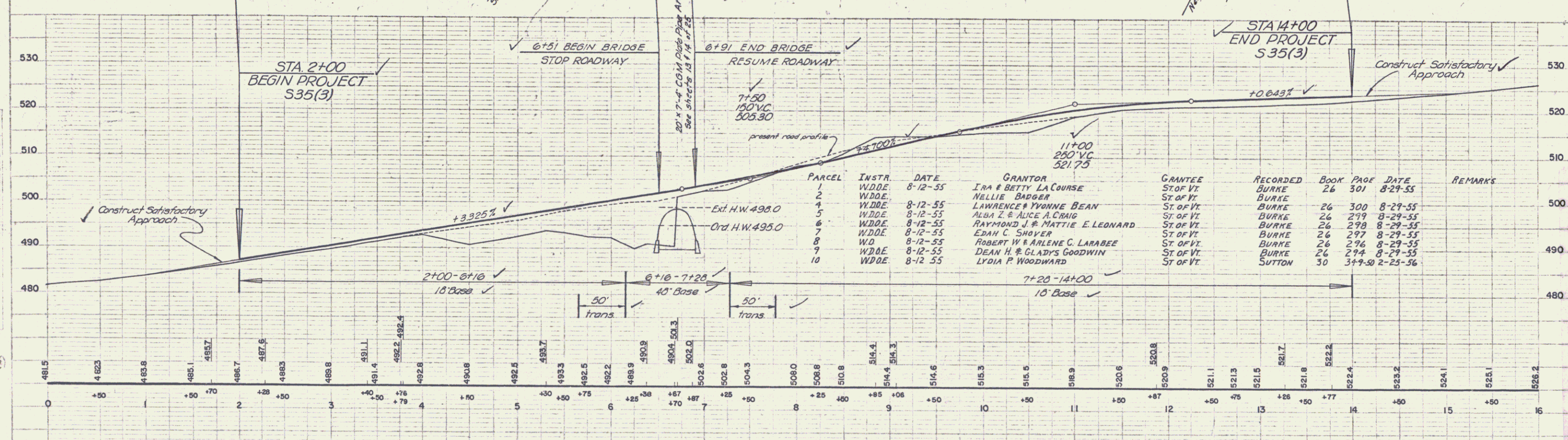
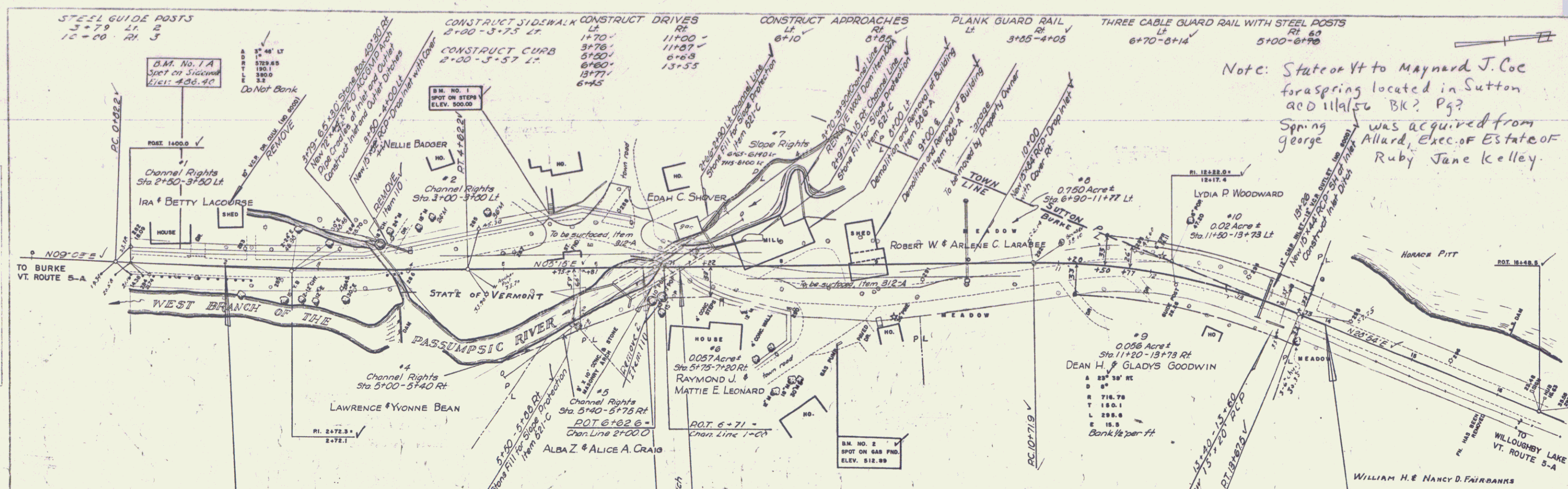
DEPARTMENT OF COMMERCE BUREAU OF PUBLIC ROADS	
APPROVED	DATE
DISTRICT ENGINEER	DATE
PROJECT S NO. 35 (3)	
SHEET 1 OF 25 SHEETS	



FINAL ESTIMATED QUANTITIES (Bridge Only)			
257'	106A	Channel Excavation of Earth	322 cy.
98'	106B	Channel Excavation of Rock	98 cy.
335'	107	Structure Excavation (modified)	318 cy.
143'	401-B	Concrete, Class "B" (modified)	133 cy.
6271'	402	Reinforcing Steel (See Steel Sheet)	6275 lbs.
1'	429C	Corr. Galv. Metal Plate Arch (Est. Wgt 46860#)	1 lb.
1'	441	Temporary Bridge (Foot Traffic Only)	1 lb.
98'	521-C	Stone Fill for Slope Protection	79 cy.

LIST OF SHEETS (Bridge Only)	
1	Plan (20'-1")
2	Plan & Profile (30'-1")
3	Earthwork Sheet
4-5	Details of 20'x7' 4" C.G.M.P.A.
6	Reinforcing Steel Details
7	Std. Dwg. S.B.11 (Barricades, Signs & Lights)
8	Std. Dwg. S.B.29
9-11	Channel Sections

BURKE
Series S No 35(3)
Sheet 12 of 25



BM #1 A Spot on Sidewalk 17' Lt. Sta. 1+52 Elevation 486.40
 BM #1 Spot on steps 59' Lt. Sta. 5+49 Elevation 500.00
 BM #2 Spot on gas pump foundation 76' Lt. Sta. 8+50 Elevation 512.09

BURKE
 PROJECT S NO 35(3)
 SHEET 25 OF 25