

**INDEX OF SHEETS**

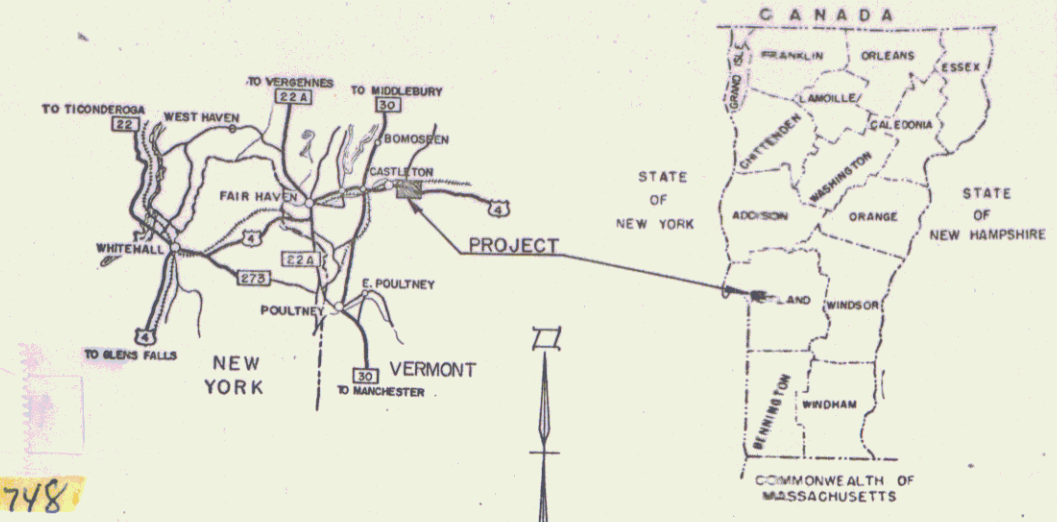
SHEET NO. 1	TITLE PAGE
2	TYPICAL CROSS SECTION OF IMPROVEMENT 3" BITUMINOUS CONCRETE PAVEMENT
4	QUANTITY SHEET (ITEMS) ITEM 361-B MOD.
5	EARTHWORK SHEET
6	PLAN AND PROFILE SHEETS
7-8	BRIDGE-PLAN AND ELEVATION
9	BRIDGE-FRAMING PLAN, BORINGS AND TYPICAL SECTION
10	BRIDGE-SB-AS 62 APPROACH SLAB NO. 1
11	BRIDGE-SB-AS 62 APPROACH SLAB NO. 2
12	BRIDGE-DETAILS OF JOINTMENTS NOS. 1 AND 2
13	BRIDGE-REINFORCING STEEL SCHEDULE
15-24	STANDARD SHEETS-SCB-30-62, SCB-DI-62, SCB-D2-62, SCB-D4-62, SCB-D6-62, SCB-D7-62, SCB-D8-62, SCB-D9-62, SCB-56-62 SHEETS 1 AND 2
25	FLASHING SIGNAL
26	A-61 DRILLING AND BLASTING OF SOLID ROCK SUBGRADE
27	B-1 BANKING TABLES
28	B-5 TYPICAL SLOPE GRADING
29	C-1 CURB DETAILS
30	D-2 DETAILS OF HEADWALLS AND UNDERDRAIN
31	D-4 DETAILS OF FLUSHING BASINS
32	D-8 DETAILS OF REINFORCED CONCRETE DROP INLETS
33	D-11 DETAILS OF GRATES AND COVERS FOR DROP INLETS
34	E-1 BARRICADES, SIGNS AND LIGHTS (ROADWAY)
35	E-9 FEDERAL AID CONSTRUCTION IDENTIFICATION SIGNS
36	G-3 THREE CABLE GUARD RAIL WITH STEEL POSTS
37	G-4 STEEL GUIDE AND MARKER POSTS
38	J-1 PROJECT AND BOUNDARY MARKERS
39-44	CROSS SECTIONS
45-48	CHANNEL SECTIONS EXTRA SHEETS
6-A	FINAL EARTHWORKS
14A-D	STEEL SHEETS
39	APPROACH SECTIONS
46A	TRAV. ON R.R.

**STATE OF VERMONT  
DEPARTMENT OF HIGHWAYS**

**PROPOSED IMPROVEMENT**

**TOWN OF CASTLETON  
COUNTY OF RUTLAND  
VT ROUTE 4 A  
FAIR HAVEN-RUTLAND ROAD**

BEGINNING AT A POINT 3.64 MILES EAST OF THE FAIR HAVEN-CASTLETON TOWN LINE AND EXTENDING EASTERLY 0.317 MILE  
 LENGTH OF ROADWAY 1605.79 FEET = 0.304 MI.  
 LENGTH OF BRIDGE 6900 FEET = 0.013 MI.  
 LENGTH OF PROJECT 1674.79 FEET = 0.317 MI.



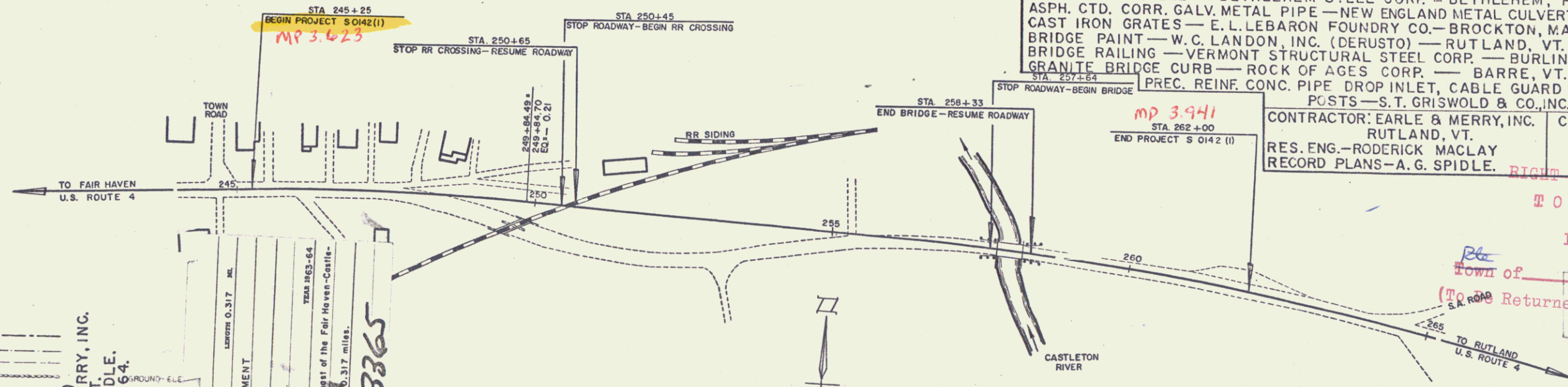
Print 99R748

PROJECT NAME & NUMBER	TYPE	PAVEMENT AREA
CASTLETON S0142(I)	BIT. CONCRETE PAVT.	4,467 S.Y.
RECORD PLANS MATERIALS		

SUBBASE OF GRAVEL-PELLETIER'S GRAVEL PIT - CASTLETON, VT.  
 CRUSHED GRAVEL PLANT MIXED & BITUMINOUS CONCRETE-L.M. PIKE & SON, INC. (PLANT)-FLORENCE, VT.  
 REFINED TAR-WITCO CHEMICAL CO., INC.-WORCESTER, MASS.  
 ASPHALT-MOBIL OIL CO.-E. PROVIDENCE, R.I.  
 TAR EMULSION-THE BORDEN CHEMICAL CO.-NEW YORK, N.Y.  
 RUBBER JOINT MATERIAL & CORK JOINT FILLER-A.H. HARRIS & SONS, INC.-NEW BRITAIN, CT.  
 CONCRETE CLASS AA & B-JOSEPH P. CARRARA & SONS INC.-RUTLAND, VT.  
 REINFORCING STEEL-REPUBLIC STEEL CORP.-SO. BOSTON, MASS.  
 STRUCTURAL STEEL-BETHEHEM STEEL CORP.-BETHEHEM, PA.  
 ASPH. CTD. CORR. GALV. METAL PIPE-NEW ENGLAND METAL CULVERT CO.-WESTMINSTER, VT.  
 CAST IRON GRATES-E. L. LEBARON FOUNDRY CO.-BROCKTON, MASS.  
 BRIDGE PAINT-W.C. LONDON, INC. (DERUSTO)-RUTLAND, VT.  
 BRIDGE RAILING-VERMONT STRUCTURAL STEEL CORP.-BURLINGTON, VT.  
 GRANITE BRIDGE CURB-ROCK OF AGES CORP.-BARRE, VT.  
 PREC. REINF. CONC. PIPE DROP INLET, CABLE GUARD RAIL, STEEL GUIDE & MARKER POSTS-S.T. GRISWOLD & CO., INC.-ESSEX JUNCTION, VT.

CONTRACTOR: EARLE & MERRY, INC. CONTRACT DATED: AUGUST 27, 1963.  
 RES. ENG.-RODERICK MACLAY STARTED: SEPTEMBER 26, 1963.  
 RECORD PLANS-A.G. SPIDLE. COMPLETED: JULY 1, 1964.  
 ACCEPTED: JULY 1, 1964.

RIGHT OF WAY DIVISION  
 TOWN FILE  
 PERPETUAL  
 Town of VT-4A  
 (To Be Returned to R.O.W. Division)



**CONVENTIONAL SIGNS**

COUNTY LINE	---
TOWN LINE	---
FENCE LINE	---
STONE WALL	---
UNFENCED PROPERTY	---
GUARD RAIL	---
TRAVELED WAY	---
RAILROAD	---
RETAINING WALL	---
CENTER LINE	---
SURVEY LINE	---
CULVERT	---
DROP INLET	---
TROLLEY POLE	---
POWER POLE	---
TELEPHONE POLE	---
TREES	---
HEDGE	---

CASTLETON S 0142 (I)  
 CONTRACTOR- EARLE & MERRY, INC.  
 RUTLAND, VT.  
 RECORD PLANS-A.G. SPIDLE  
 CONST. COMP. JULY 1, 1964.

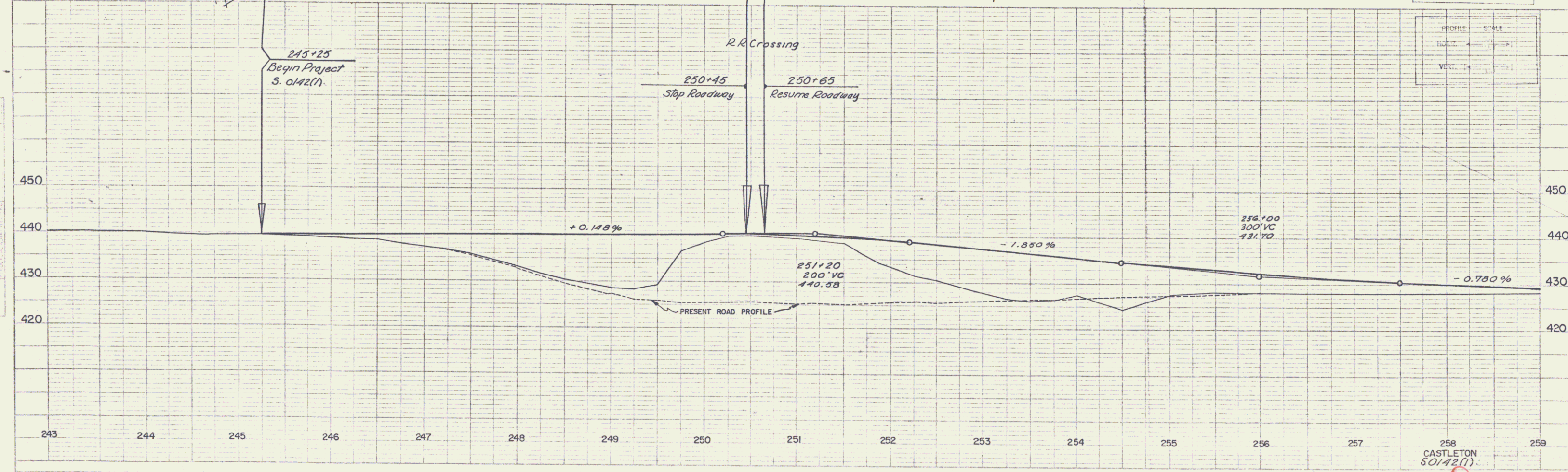
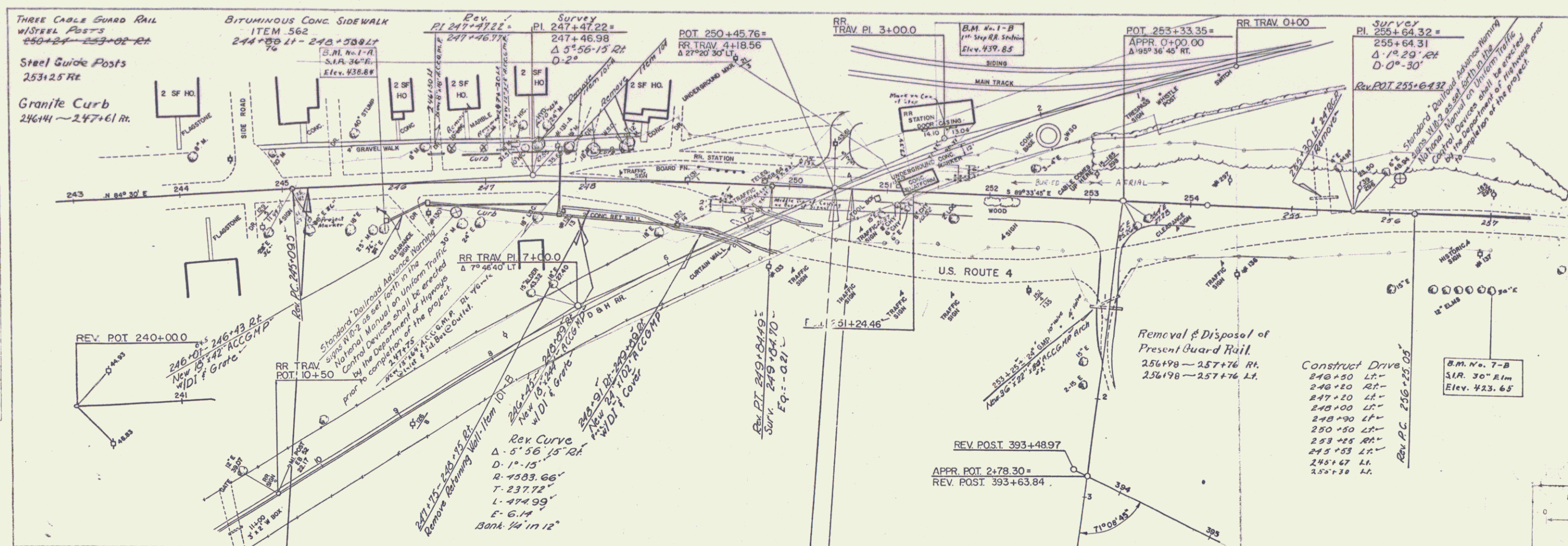
Box 197 3365



APPROVED: <i>[Signature]</i> SECONDARY ENGINEER DATE 5/24/63	APPROVED: <i>[Signature]</i> ASST. CHIEF ENGINEER DATE May 24, 1963	APPROVED: <i>[Signature]</i> DISTRICT ENGINEER DATE 5/24/63	APPROVED: <i>[Signature]</i> BRIDGE ENGINEER DATE 5/24/1963	APPROVED: <i>[Signature]</i> DISTRICT ENGINEER DATE 5-27-63	APPROVED: <i>[Signature]</i> BRIDGE ENGINEER DATE 5/23/63	APPROVED: <i>[Signature]</i> CHIEF ENGINEER DATE 5/24/1963
--	---	---	---	---	---	--

THESE PLANS ARE SUBJECT TO SUCH REVISIONS AS MAY BE REQUIRED BY THE BUREAU OF PUBLIC ROADS OR THE COMMISSIONER OF HIGHWAYS.  
 CONSTRUCTION IS TO BE CARRIED ON IN ACCORDANCE WITH THE PLANS AND THE STANDARD SPECIFICATIONS FOR HIGHWAY AND BRIDGE CONSTRUCTION OF JANUARY 1956 SUBMITTED TO THE BUREAU OF PUBLIC ROADS AS APPROVED JULY 5, 1956, INCLUDING ALL SUBSEQUENT APPROVED REVISIONS AND SUCH REVISED SPECIFICATIONS AND SPECIAL PROVISIONS AS ARE SUBMITTED WITH THE PLANS.

DEPARTMENT OF COMMERCE BUREAU OF PUBLIC ROADS	
APPROVED: _____	DATE _____
DIVISION ENGINEER	DATE
PROJECT S NO. 0142 (I)	
SHEET 1 OF 40 SHEETS	



**PLAN**

DATE: 11/15/50

BY: [Signature]

SCALE: AS SHOWN

NOTE: ALL DIMENSIONS ARE IN FEET UNLESS OTHERWISE NOTED.

NO. OF SHEETS: 48

SHEET NO.: 7

**PROFILE**

DATE: 11/15/50

BY: [Signature]

SCALE: AS SHOWN

NOTE: ALL DIMENSIONS ARE IN FEET UNLESS OTHERWISE NOTED.

NO. OF SHEETS: 48

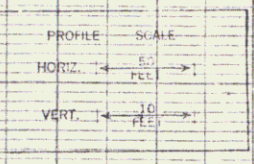
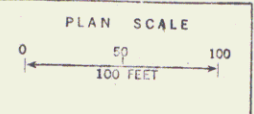
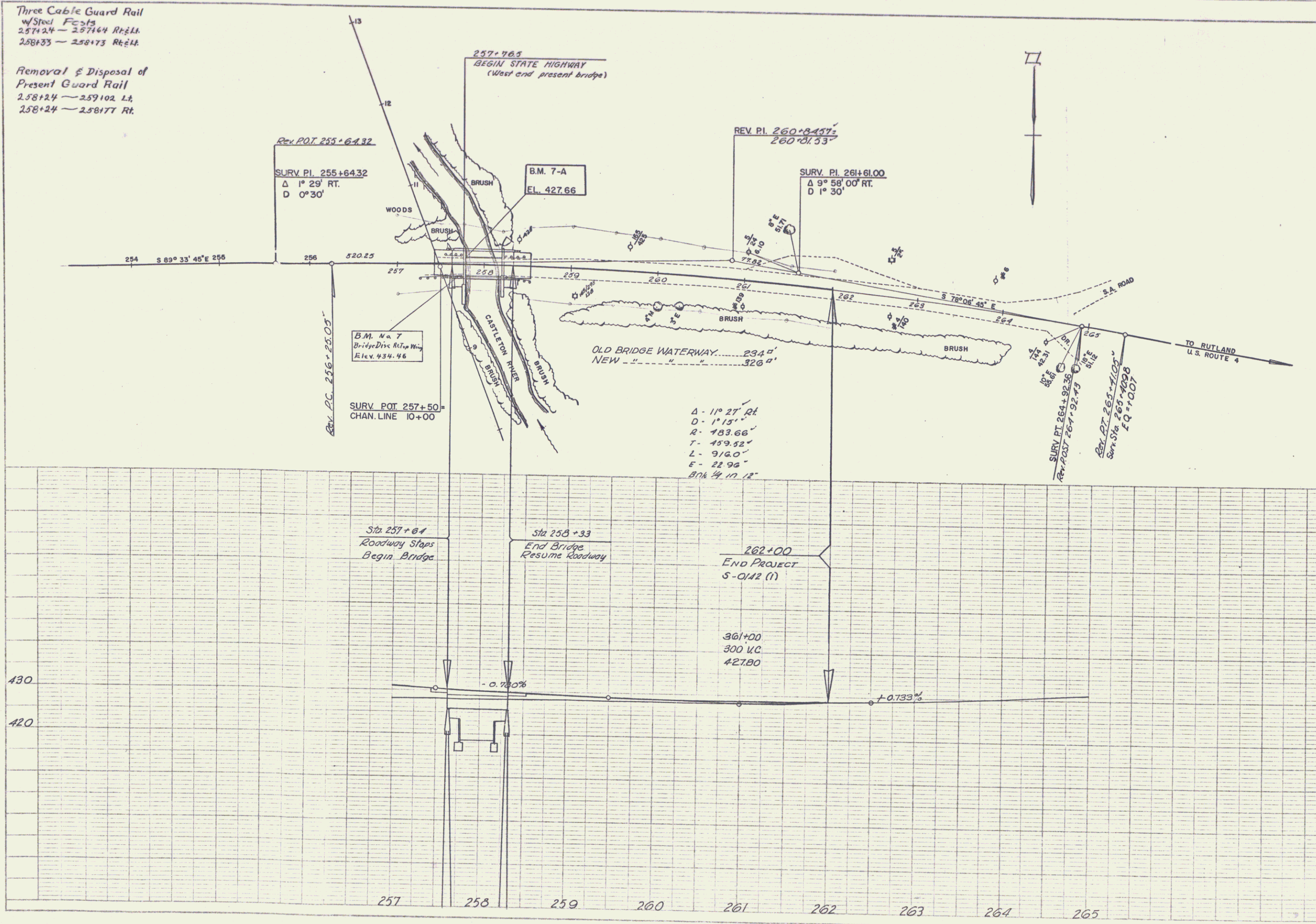
SHEET NO.: 7

Three Cable Guard Rail  
 w/Steel Posts  
 257+24 — 257+64 R&H  
 258+33 — 258+73 R&H

Removal & Disposal of  
 Present Guard Rail  
 258+24 — 259+02 L&H  
 258+24 — 258+77 R&H

DATE	
BY	
REVISION	
NO.	
DESCRIPTION	
BY	
DATE	

DATE	3/23
BY	Y. G. G.
REVISION	
NO.	
DESCRIPTION	
BY	
DATE	



CASTLETON  
 PROJ. S. NO. 0142-(1)  
 SHEET 3 OF 48