

INDEX OF SHEETS

SHEET NO	TITLE PAGE
1	TITLE PAGE
2	TYPICAL CROSS-SECTION OF IMPROVEMENT, 5" BITUMINOUS CONCRETE PAVEMENT, ITEM 361-B MOD.
3	QUANTITY SHEET (ITEMS)
4	QUANTITY SHEET (ITEMS)
5	EARTHWORK SHEET
6-8	PLAN AND PROFILE SHEETS
9	GENERAL PLAN & ELEVATION VIEW
10	BRIDGE QUANTITY SHEET
11	FRAMING PLAN & STEEL DETAILS
12	DETAILS OF ABUT. NO. 1 & EXP. DAM
13	DETAILS OF ABUT. NO. 2
14	DETAILS OF PIER
15	DETAILS OF APPR. SLAB (SB-AS-60)
16	BORINGS
17	REINFORCING STEEL SCHEDULE
18	PRELIMINARY INFORMATION SHEET
19	SCB-30-60
20	SCB-0-60
21	SCWPB-30-60, SH. 2 OF 4
22	SB 20-60
23	SB 22-60
24	SB-50-60, SH. 1 & 2 OF 2
25	A-61 (DRILLING AND BLASTING)
26	B-1 (BANKING TABLES)
27	B-5 (TYPICAL SLOPE GRADING)
28	3-6 (MUCK EXCAVATION)
29	D-2 (DRAINAGE)
30	D-4 (FLUSHING BASINS)
31	D-8 (REINFORCED CONC. DROP INLETS)
32	E-1 (BARRICADES SIGNS & LIGHTS)
33	E-9 (CONSTRUCTION IDENTIFICATION SIGNS)
34	G-3 (THREE CABLE GUARD RAIL)
35	G-4 (STEEL MARKER POSTS)
36	J-1 (PROJECT & BOUNDARY MARKERS)
37	
38	
39	
40-52	CROSS-SECTIONS
53-57	CHANNEL SECTIONS

STATE OF VERMONT
DEPARTMENT OF HIGHWAYS

PROPOSED IMPROVEMENT

FEDERAL AID PROJECT

TOWN OF CASTLETON

COUNTY OF RUTLAND

VT ROUTE 4A

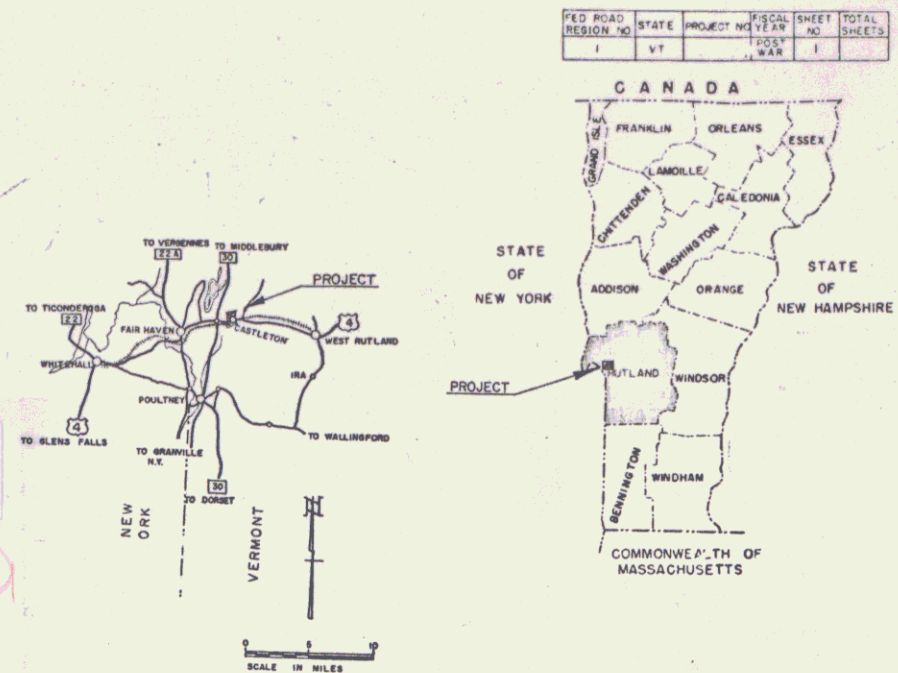
FAIR HAVEN-RUTLAND ROAD

BEGINNING AT A POINT APPROXIMATELY 2.046 MILES FROM THE FAIR HAVEN - CASTLETON TOWN LINE AND EXTENDING 0.338 MILES SOUTHEASTERLY, EXCLUDING R. R. CROSSING

LENGTH OF ROADWAY 1,657.22 FEET = 0.314 MILES
LENGTH OF BRIDGE 128.00 FEET = 0.024 MILES
LENGTH OF PROJECT 1,785.22 FEET = 0.338 MILES

1960 ADT 4700
1980 ADT 6650
1980 DIV. 875
V 60 M.P.H.

Pin# 99R745



PROJECT NAME & NUMBER	TYPE	PAVEMENT AREA
CASTLETON ST 20-L	BITUMINOUS CONCRETE	4,761 S.Y.
RECORD PLANS MATERIALS		
SUBBASE OF GRAVEL-TOWN OF CASTLETON PIT - CASTLETON, VT. PENETRATION MACADAM STONE BASE COURSE & BITUMINOUS CONCRETE PAVEMENT-L.M.PIKE & SON INC.- FLORENCE, VT. (PLANT) REFINED TAR - WHITCO CHEMICAL CO. - WORCESTER, MASS. ASPHALT & ASPHALT CEMENT - MOBIL OIL CO. - E. PROVIDENCE, R.I. TAR EMULSION - A.H.HARRIS & SONS INC. - HYDE PARK, MASS. JOINT SEALER - HOT POURED ELASTIC TYPE - A.C.HORN CO. - LONG ISLAND CITY, N.Y. CONCRETE CLASS "B" - JOSEPH P. CARRARA. - RUTLAND, VT. REINFORCING STEEL - BETHLEHEM STEEL CO. - BETHLEHEM, PA. STRUCTURAL STEEL - VERMONT STRUCTURAL STEEL CORP. - BURLINGTON, VT. REINFORCED CONCRETE PIPE - CASS-WARNER CORP. - ESSEX JUNCTION, VT. ASPH. CTD. CORR. GALV. METAL PIPE - NEW ENGLAND METAL CULVERT CO. - WHITE RIVER JUNCTION, VT. PLANK GUARD RAIL WITH PRESERVATIVE TREATMENT - KOPPERS PRODUCTS CO. - NASHUA, N.H. CABLE GUARD RAIL, STEEL GUIDE & MARKER POSTS, BOUNDARY MARKERS - S.T. GRISWOLD & CO. INC. - WILLISTON, VT. PROJECT MARKERS - MARTIN MARIETTA CO. - WINDSOR, VT. CONTRACTOR - OLSON CONSTRUCTION CO. CONTRACT DATED - DECEMBER 5, 1961. MONTPELIER, VT. STARTED - APRIL 18, 1962. RESIDENT ENGINEER - ALLAN E. REMICK. COMPLETED - OCTOBER 26, 1962. RECORD PLANS - A.G. SPIDLE. ACCEPTED - OCTOBER 26, 1962.		

NOTE: ANY FURTHER INFORMATION CONCERNING FINAL QUANTITIES, AMOUNTS OF CONCRETE DETAILS RELATIVE TO THIS PROJECT MAY BE FOUND IN EITHER THE FIELD BOOKS OR THE ESTIMATE FILE.

PROJECT CASTLETON
RUTLAND ST 20-L
TYPE BITUMINOUS CONCRETE PAVEMENT
CONTRACTOR OLSON CONSTRUCTION CO.
MONTPELIER, VT.
Location Beginning at a point approximately 2.046 miles from the Fair Haven - Castleton Town Line and extending 0.338 miles southeasterly, excluding R. R. crossing.

CASTLETON OLSON CONSTRUCTION CO.
CONTRACTOR
MONTPELIER, VT.
RECORD PLANS - A.G. SPIDLE
CONST. COMPLETED - OCTOBER 26, 1962.

GROUND ELEVATION	DATUM	LINE
GRADE ELEVATION	SATUM	POST LINE
CURVE DATA		
DEFLECTION OF ANGLE	Δ	
DEGREE OF CURVE	D	
RADIUS OF CURVE	R	
TANGENT DISTANCE	T	
LENGTH OF CURVE	L	
EXTERNAL DISTANCE	E	
POINT OF INTERSECTION	P.I.	
POINT OF CURVE	P.C.	
POINT OF TANGENT	P.T.	
POINT ON TANGENT	P.O.T.	
POINT ON SUB-TANGENT	P.O.S.T.	

SCALES

TYPICAL	1" = 300'
PROFILE HORIZONTAL	1" = 40'
PROFILE VERTICAL	1" = 10'
CROSS-SECTIONS	1" = 10'

APPROVED SECONDARY ENGINEER	APPROVED PROJECT ENGINEER	APPROVED CIVIL ENGINEER	APPROVED HIGHWAY ENGINEER	APPROVED SURVEY ENGINEER
DATE 6/15/61	DATE 6/15/61	DATE 6/14/61	DATE 6/15/61	DATE 6/16/61

U.S. ROUTE 4A DIVISION
TOWN FILE
PERPETUAL
Town of 44A

THESE PLANS ARE SUBJECT TO SUCH REVISIONS AS MAY BE TURNED TO R.O.W. DIVISION) REQUIRED BY THE BUREAU OF PUBLIC ROADS OR THE COMMISSIONER OF HIGHWAYS.
CONSTRUCTION IS TO BE CARRIED ON IN ACCORDANCE WITH THE PLANS AND THE STANDARD SPECIFICATIONS FOR HIGHWAY AND BRIDGE CONSTRUCTION OF JANUARY 1956 SUBMITTED TO THE BUREAU OF PUBLIC ROADS AS APPROVED JULY 5, 1956, INCLUDING ALL SUBSEQUENT APPROVED REVISIONS AND SUCH REVISED SPECIFICATIONS AND SPECIAL PROVISIONS AS ARE SUBMITTED WITH THE PLANS.

DIVISION ENGINEER	DATE
PROJECT ST. NO. 20-L	
SHEET 1 OF 57 SHEETS	

Construct Drives
 162+00 163+150
 162+00 163+175
 176+20 167+70

Special Ditch
 Sta 163+60 Et. - 165+00 Et. - Item 103-B
 172+00 Lt. - 173+25 Lt. - Item 103-A
 176+25 Lt. - 180+50 Lt. - Item 101-A

Three Cable Guard Rail w/ Steel Posts

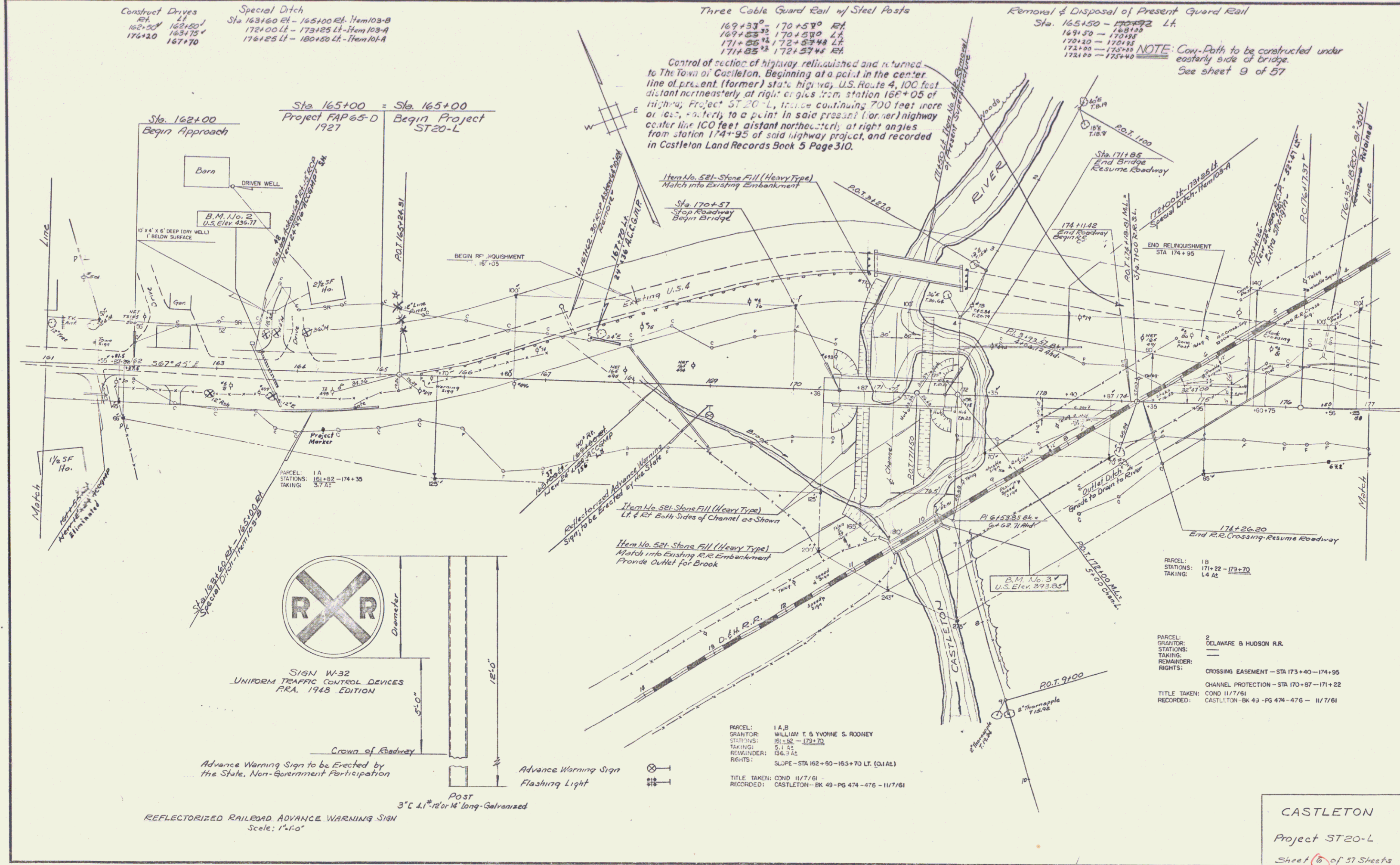
169+33⁰ - 170+57⁰ RT
 169+53³⁵ - 170+57⁰ LT
 171+65¹² - 172+57⁴⁸ LT
 171+85¹² - 172+57⁴⁸ RT

Removal & Disposal of Present Guard Rail

Sta. 165+50 - 170+72 Lt.
 169+50 - 170+95
 170+20 - 170+95
 172+00 - 175+55
 172+00 - 175+40

NOTE: Cow-Paths to be constructed under easterly side of bridge. See sheet 9 of 57

Control of section of highway relinquished and returned to The Town of Castleton. Beginning at a point in the center line of present (former) state highway, U.S. Route 4, 100 feet distant northeasterly at right angles from station 168+05 of highway, Project ST 20-L, thence continuing 700 feet more or less, easterly to a point in said present (former) highway center line 100 feet distant northeasterly at right angles from station 174+95 of said highway project, and recorded in Castleton Land Records Book 5 Page 310.



SIGN W-32
 UNIFORM TRAFFIC CONTROL DEVICES
 F.R.A. 1948 EDITION

Advance Warning Sign to be Erected by the State, Non-Government Participation

Advance Warning Sign Flashing Light

Post
 3" x 4 1/2" x 12' or 14' long - Galvanized

REFLECTORIZED RAILROAD ADVANCE WARNING SIGN
 Scale: 1"=10'

PARCEL: 1 A, B
 GRANTOR: WILLIAM T. & YVONNE S. ROONEY
 STATIONS: 161+82 - 179+70
 TAKING: 5 1/2 AC
 REMAINDER: 136.3 AC
 RIGHTS: SLOPE - STA 162+50 - 163+70 LT. (0.1 AC)

TITLE TAKEN: COND 11/7/61
 RECORDED: CASTLETON - BK 49 - PG 474 - 476 - 11/7/61

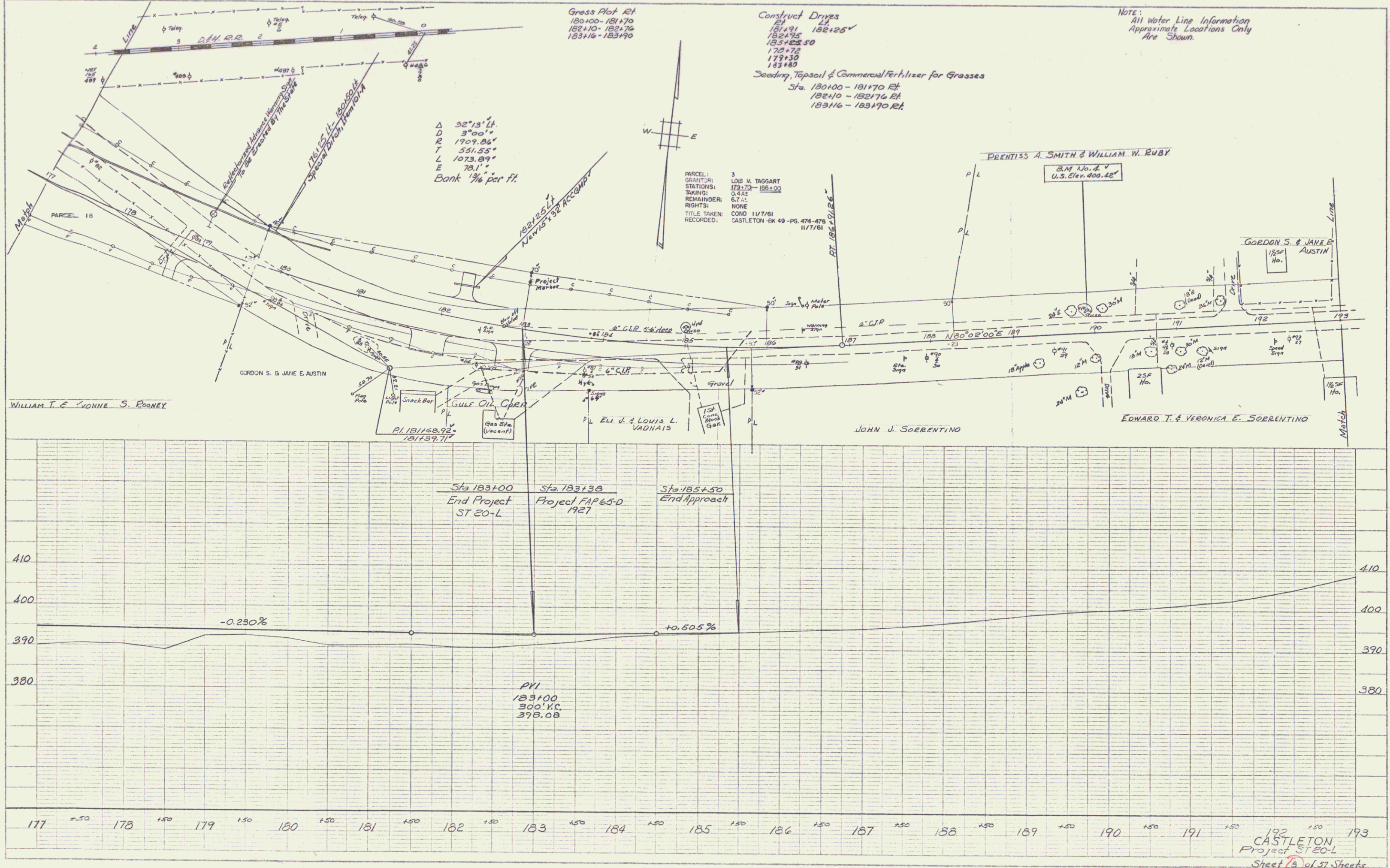
PARCEL: 2
 GRANTOR: DELAWARE & HUDSON R.R.
 STATIONS: ---
 TAKING: ---
 REMAINDER: ---
 RIGHTS: CROSSING EASEMENT - STA 173+40 - 174+95
 CHANNEL PROTECTION - STA 170+87 - 171+22

TITLE TAKEN: COND 11/7/61
 RECORDED: CASTLETON - BK 49 - PG 474 - 476 - 11/7/61

CASTLETON
 Project ST20-L
 Sheet 6 of 57 Sheets

PLAN
 DATE: 11/7/61
 DRAWN BY: D. Brown
 CHECKED BY: [Signature]
 NO. 118

PROFILE
 DATE: 11/7/61
 DRAWN BY: D. Brown
 CHECKED BY: [Signature]
 NO. 118



NOTE:
 All Water Line Information
 Approximate Locations Only
 Are Shown.

PLATE 1 PLAN PROJECT 65-K & E BRIDGE
 REEFER & LUGER CO. NEW YORK
 N. E. Co. No. 245-1000
 11/7/61

192
 CASTLETON
 Project ST 20-L
 Sheet (B) of 57 Sheets

3