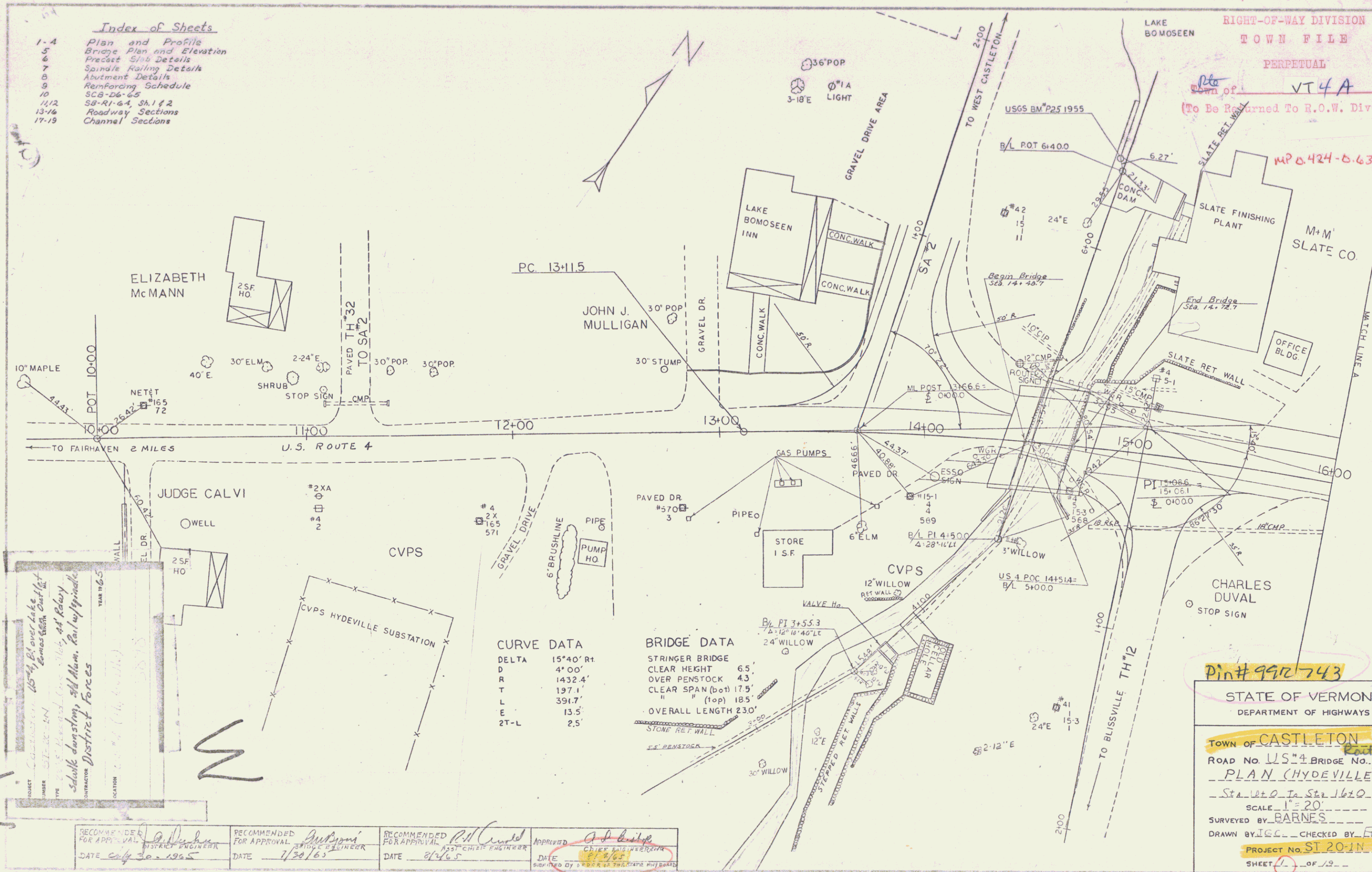


- Index of Sheets
- 1-4 Plan and Profile
 - 5 Bridge Plan and Elevation
 - 6 Precast Slab Details
 - 7 Spindle Railing Details
 - 8 Abutment Details
 - 9 Reinforcing Schedule
 - 10 SB-R1-64, Sh. 1 & 2
 - 11-12 Roadway Sections
 - 13-16 Channel Sections
 - 17-19

RIGHT-OF-WAY DIVISION
TOWN FILE

PERPETUAL
Town of VT 4A
(To Be Returned To R.O.W. Division)

MP 0.424-0.632



CURVE DATA

DELTA	15°40' Rt
D	4°00'
R	1432.4'
T	197.1'
L	391.7'
E	13.5'
2T-L	2.5'

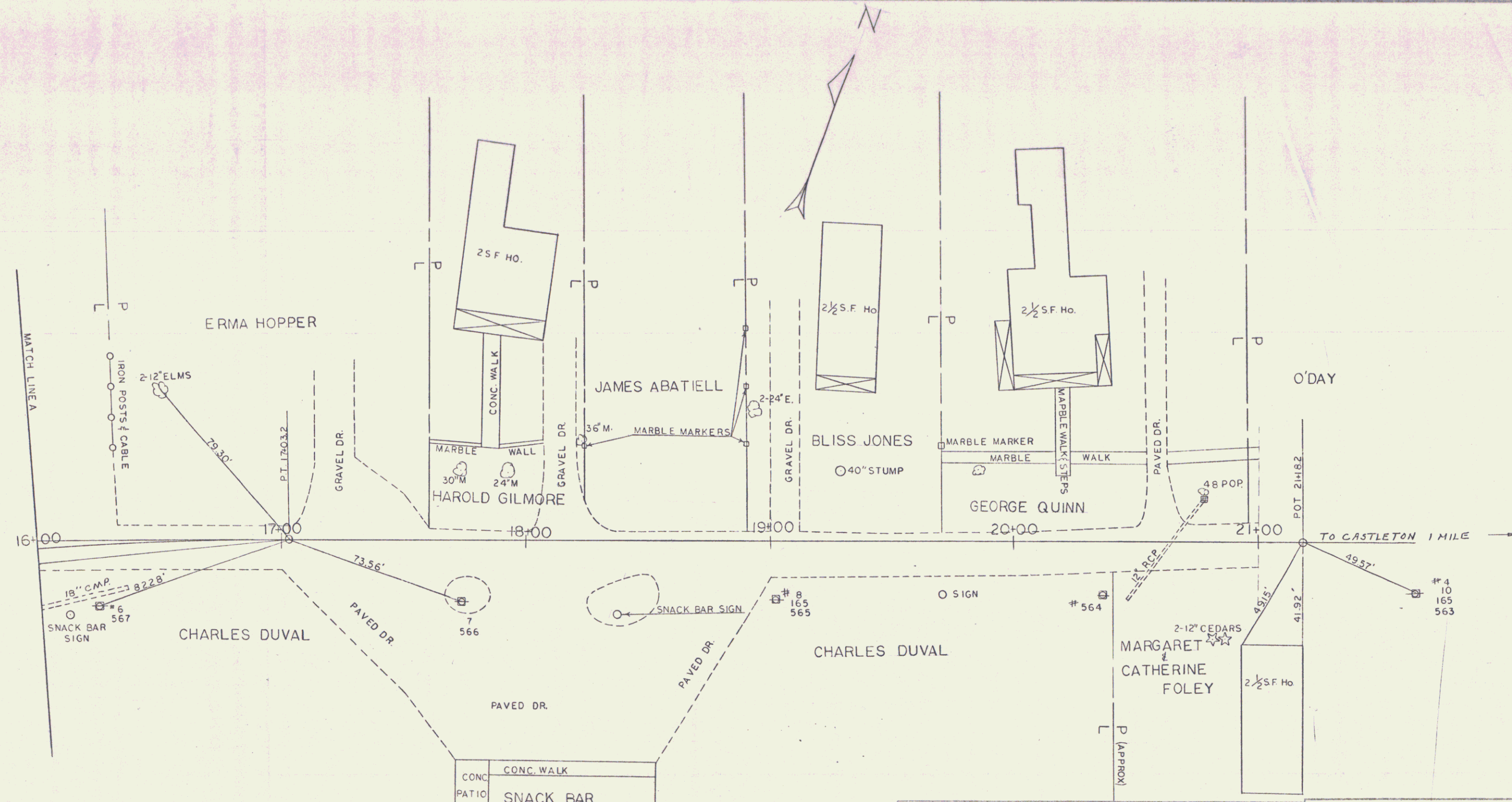
BRIDGE DATA

STRINGER BRIDGE	
CLEAR HEIGHT	6.5'
OVER PENSTOCK	4.3'
CLEAR SPAN (bot)	17.5'
" (top)	18.5'
OVERALL LENGTH	230'

PROJECT: CONSTRUCTION OF 15' x 15' OVER LAKE BOMOSEEN
 DRAWN BY: W. J. BARNES
 CHECKED BY: W. J. BARNES
 DATE: 1/30/65

RECOMMENDED FOR APPROVAL: W. J. Barnes DISTRICT ENGINEER DATE: 1/30/65
 RECOMMENDED FOR APPROVAL: W. J. Barnes BRIDGE ENGINEER DATE: 1/30/65
 RECOMMENDED FOR APPROVAL: W. J. Barnes ASST. CHIEF ENGINEER DATE: 1/30/65
 APPROVED: W. J. Barnes CHIEF ENGINEER DATE: 1/30/65

Pin# 9912743
 STATE OF VERMONT
 DEPARTMENT OF HIGHWAYS
 TOWN OF CASTLETON
 ROAD NO. U.S. 4 BRIDGE NO. 201N
 PLAN (HYDEVILLE)
 Sta. 10+00 To Sta. 16+00
 SCALE 1" = 20'
 SURVEYED BY BARNES
 DRAWN BY J.C.C. CHECKED BY R.W.D.
 PROJECT NO. SI 20-1N
 SHEET 1 OF 1



ITEM NO.	ITEM	UNIT	NET	TOTAL	FINAL
	CHAN. EXCAV. OF EARTH	C. Y.			
	CHAN. EXCAV. OF ROCK	C. Y.			
	UNCLAS. CHAN. EXCAV.	C. Y.			
	STRUCT. EXCAV.	C. Y.			
	CONC. CLASS AA (MOD.)	C. Y.			
	CONC. CLASS B (MOD.)	C. Y.			
	REIN. STEEL	LBS.			
	ASPHALTIC ASB. COATING	S. Y.			
	TREATED TIMBER PILING	L. F.			
	SPLICERS FOR STEEL PILING	EA.			
	STEEL PILING	L. F.			
	UNTREATED TIMBER PILING	L. F.			

STATE OF VERMONT
DEPARTMENT OF HIGHWAYS

TOWN OF CASTLETON

ROAD No. US#4 BRIDGE No. _____

PLAN (HYDEVILLE)

STA. 16+00 TO STA. 21+18.2

SCALE 1"=20'

SURVEYED BY BARNES

DRAWN BY J.G.C. CHECKED BY R.N.D.

PROJECT No. ST 20-1N

SHEET 3 OF 19