

INDEX OF SHEETS

SHEET NO.	TITLE PAGE
2	TYPICAL CROSS-SECTION OF IMPROVEMENT
3	PLAN AND PROFILE STA. 0+00 to 13+00
4	" " " " 13+00 - 29+00
5	" " " " 29+00 - 45+00
6	" " " " 45+00 - 61+00
7	" " " " 61+00 - 75+00
8	" " " " 75+00 - 91+00
9	" " " " 91+00 - 107+00
10	" " " " 107+00 - 123+00
11	" " " " 123+00 - 138+00
12	" " " " 138+00 - 151+00
13	" " " " 151+00 - 167+00
14	" " " " 167+00 - 179+00
15	" " " " 179+00 - 194+00
16	" " " " 194+00 - 209+00
17	" " " " 209+00 - 223+00
18	" " " " 223+00 - 237+00
19	" " " " 237+00 - 251+00
20	" " " " 251+00 - 267+00
21 APPROACH SLAB FOR BRIDGES STAS. 171+70.5 & 213+65.0	
22-28 DETAILS OF BRIDGE STA. 213+65	
29 " " " " 171+70.5	
30-72 CROSS SECTIONS	
BEGINNING OF PROJECT STA. 0+00	
MP 2.231	

STATE OF VERMONT
STATE HIGHWAY DEPARTMENT

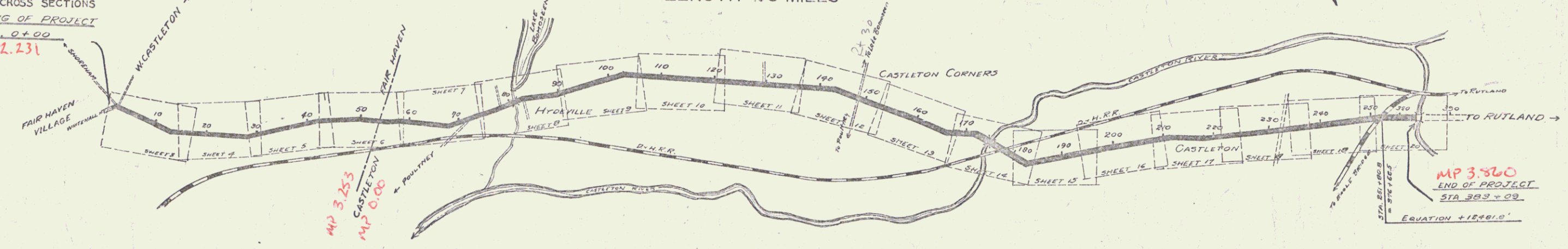
PLAN AND PROFILE OF PROPOSED
STATE HIGHWAY

TOWNS OF CASTLETON - FAIR HAVEN Route Vt 4A
GATEWAY ROAD Pin# 99R742 Project FAP65D

BEGINNING AT THE EASTERN END OF CONCRETE PAVEMENT IN FAIRHAVEN VILLAGE AND
EXTENDING EASTERLY TO FIRST CONCRETE BRIDGE EAST OF CASTLETON VILLAGE
LENGTH 4.8 MILES

SCALES
PLAN 1" = 50'
PROFILE (Horiz. 1" = 50'
Vert. 1" = 10')
SECTIONS 1" = 5'

FED. ROAD DIST. NO.	STATE	PROJECT NO.	YEAR	SHEET NO.	TOTAL SHEETS
9	Vt.	65D		1	72



LAYOUT
SCALE ~ 1000 FEET = 1 INCH

PROJECT	Castleton - Fair Haven
NUMBER	65-D
TYPE	Concrete
CONTRACTOR	D. J. Holland
LOCATION	See File Card
YEAR	1927

CONVENTIONAL SIGNS

GROUND ELEVATION	DATE	LINE
GRADE ELEVATION	DATE	LINE
CURVE DATA	DEFLECTION ANGLE	Δ
	DEGREE OF CURVE	D.
	RADIUS OF CURVE	R.
	TANGENT DISTANCE	T.
	LENGTH OF CURVE	L.
	EXTERNAL DISTANCE	E.
	POINT OF INTERSECTION	P.I.
	POINT OF CURVE	P.C.
	POINT OF TANGENT	P.T.

NOTE: These Plans (as revised in red) form a part of the Record Plans for Project F-65(D) 1927 as well as the original Plans for F-65(D) 1927.

RECORD PLANS

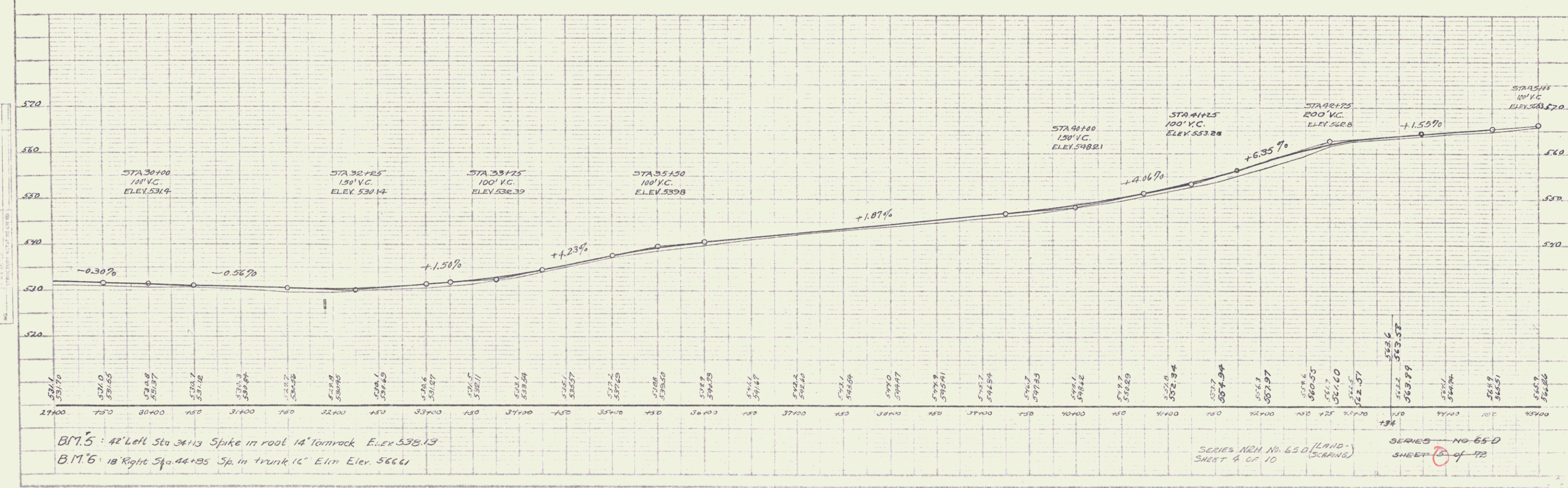
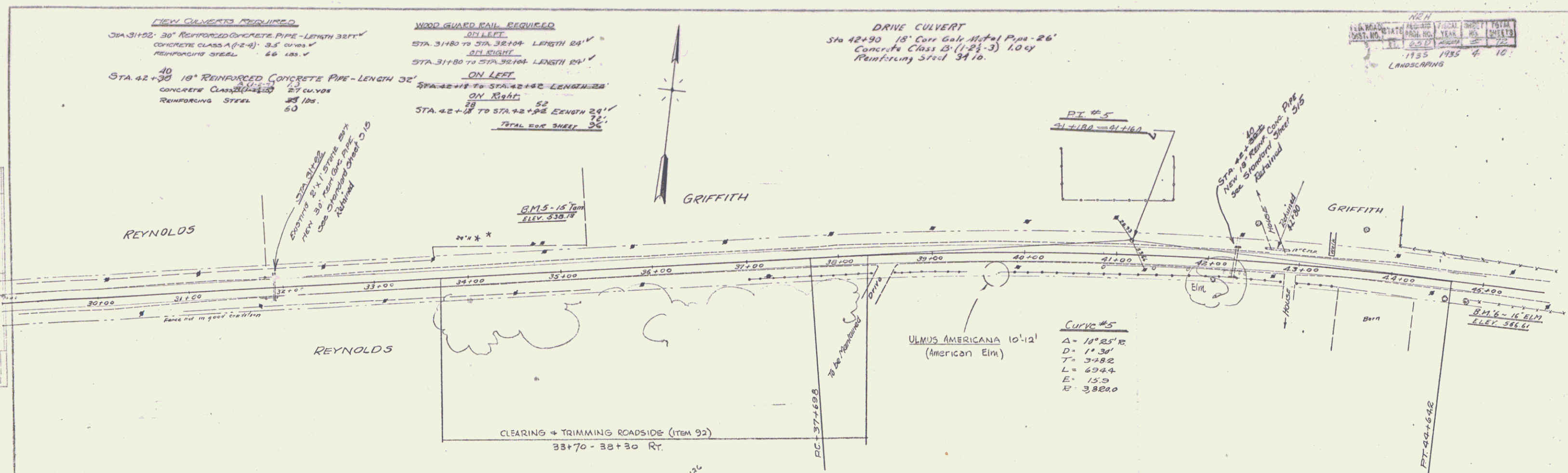
RIGHT-OF-WAY DIVISION
TOWN FILE
PERPETUAL
Town of VT 4A
(To Be Returned To R.O.W. Division)

APPROVED: AUGUST 23, 1927
H.E. Sargent
CHIEF ENGINEER

SUBMITTED BY ORDER OF THE STATE HIGHWAY BOARD
AUGUST 23, 1927
L. B. Bates
COMMISSIONER OF HIGHWAYS

NOTE: ANY FURTHER INFORMATION CONCERNING THIS PROJECT MAY BE FOUND IN EITHER THE FIELD BOOKS OR THE ESTIMATE FILE.

SERIES No. FILED
SHEET 1 OF 72

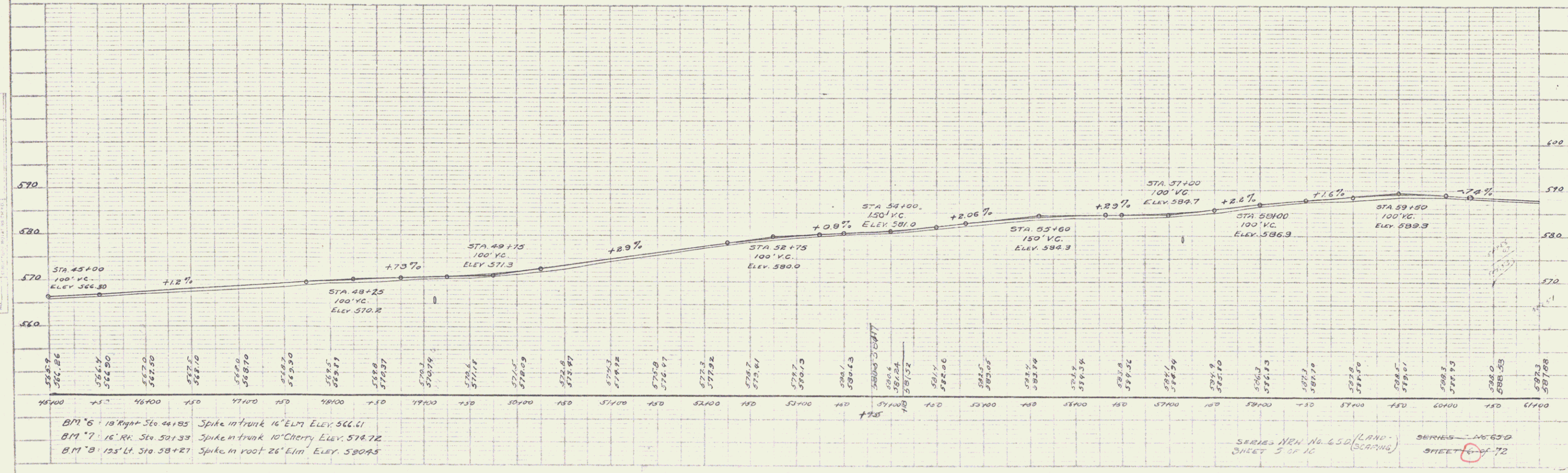
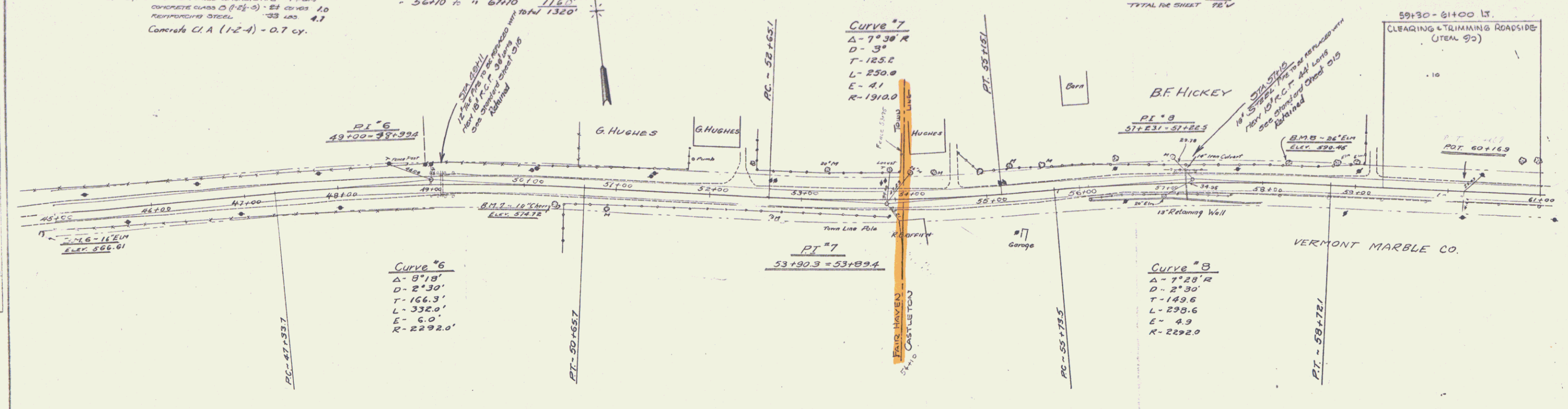


NEW CURVBENTS REQUIRED
 STA 49+11 - 15' Reinforced Concrete Pipe 36" Dia
 CONCRETE CLASS D (1-2-3) - 24' CUBIC YD
 REINFORCING STEEL 120 LBS
 STA 47+15 - 15' Reinforced Concrete Pipe 48" Dia
 CONCRETE CLASS D (1-2-3) - 24' CUBIC YD
 REINFORCING STEEL 120 LBS
 Concrete C.I.A (1-2-4) - 0.7 cy.

CABLE GUARD RAIL REQUIRED
 ALL RIGHT
 STA 49+15 TO STA 51+53 - LENGTH 138'
 STA 40+55 TO STA 42+45 - 180'
 STA 56+10 TO STA 61+10 - 1160'
 TOTAL 1320'

WOOD GUARD RAIL REQUIRED
 ALL LEFT
 STA 48+59 TO STA 49+23 - LENGTH 24'
 STA 57+03 TO STA 57+27 - 24'
 ALL RIGHT
 STA 48+59 TO STA 49+23 - LENGTH 24'
 TOTAL 72'

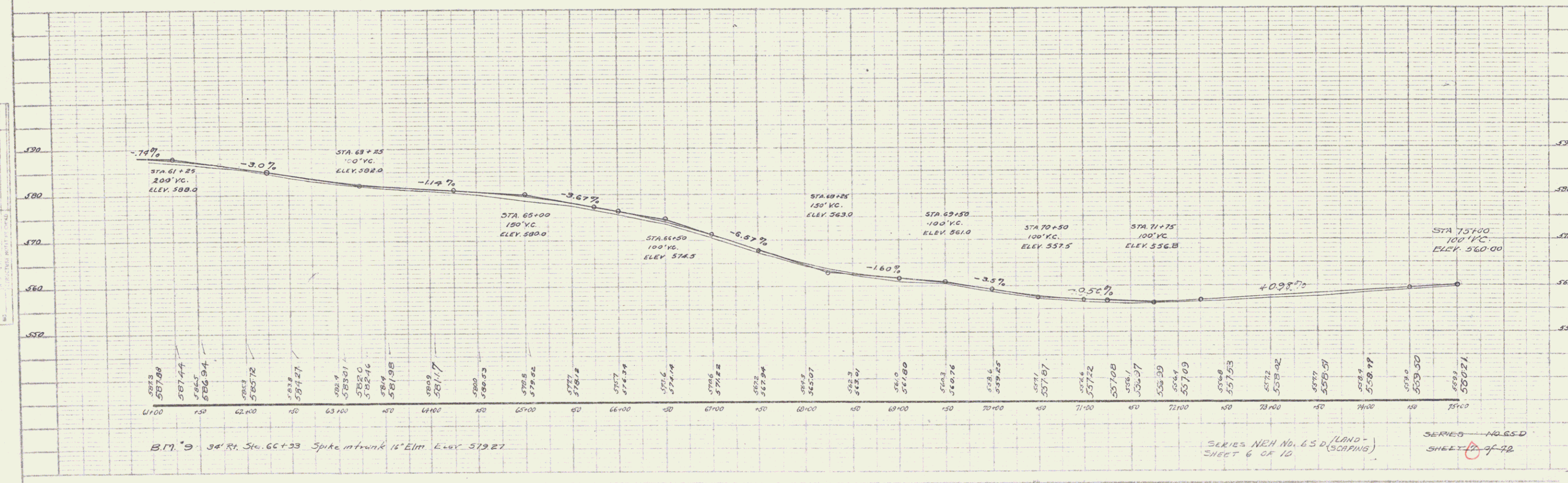
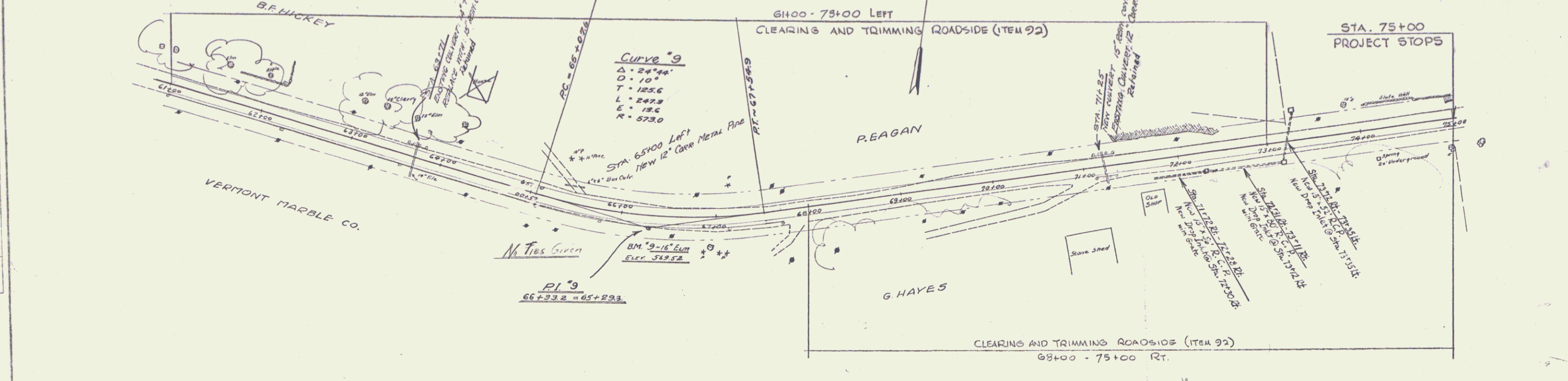
FED. ROAD DIST. NO.	STATE	FISCAL YEAR	SHEET NO.	TOTAL SHEETS
1935	1935	5	10	



B.M. #6 - 18' Right Sta. 44+85 Spike in trunk 16' Elm Elev. 566.61
 B.M. #7 - 16' Rk. Sta. 50+33 Spike in trunk 10' Cherry Elev. 578.72
 B.M. #8 - 125' Lt. Sta. 58+27 Spike in root 26' Elm Elev. 580.85

SERIES NR. No. 650 (LAND-SCAPING) SHEET 5 OF 10
 SERIES - No. 650 SHEET 6 OF 72

SABLE GUANO RAIL REQUIRED		NEW CULVERTS REQUIRED		NEW CULVERTS REQUIRED		NEW DRIVEWAY CULVERTS REQUIRED		WOOD GUANO RAIL REQUIRED		TOTAL SHEETS	
ITEM	LENGTH	ITEM	LENGTH	ITEM	LENGTH	ITEM	LENGTH	ITEM	LENGTH	NO.	TOTAL
1	128'	1	10'	1	10'	1	10'	1	10'	1	10
TOTAL FOR SHEET										1	10



FIELD NO.	STATE	FISCAL YEAR	SHEET NO.	TOTAL SHEETS
1	VT	1935	6	10

6

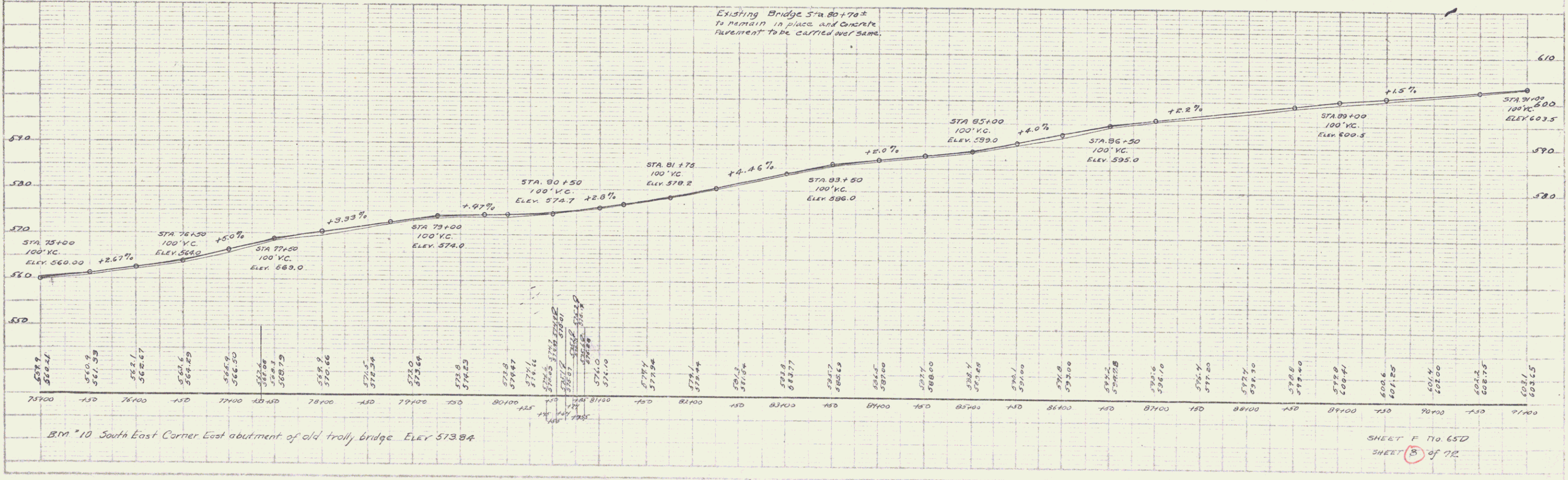
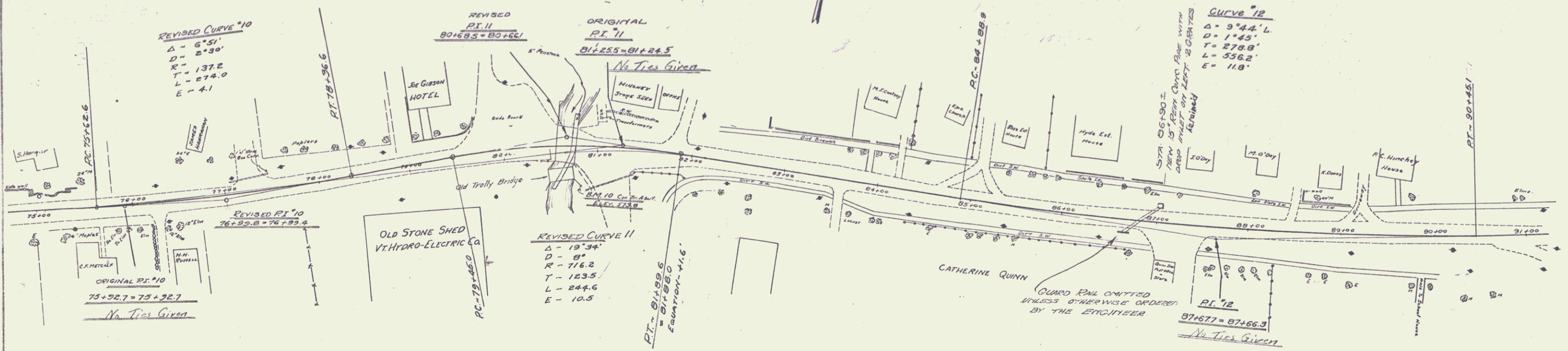
CABLE GUARD RAIL REQUIRED
 CONTRACTOR TO PROVIDE SATISFACTORY CONNECTION OF
 CABLE GUARD RAIL TO EXISTING BRIDGE RAIL AS
 PART OF PRICE BID PER LINEAL FOOT FROM #87

WOOD GUARD RAIL
 Sta 86+18 - 87+02 RT 24 FT
 At bridge RT 16 FT

DRIVE CULVERTS
 Sta 77+45 18" Cor Galv. Met. Pipe 30'
 Concrete Cl. 2 (1-2-5) 11.4'
 Reinforcing Steel 3410.
 Sta 82+25 16" Cor Galv. Met. Pipe 8'
 Concrete Cl. 2 (1-2-5) 1.3'
 Reinforcing Steel 1710
 Sta 85+00 12" Cor Galv. Met. Pipe 4.3'
 Concrete Cl. 2 (1-2-5) 1.0'
 Reinforcing Steel 4310.

NEW CULVERTS REQUIRED
 STA 88+90 15" Rein. Conc. Pipe 32 FT
 WITH DROP INLET AND 2 GRATES
 CONCRETE CLASS A (1-2-4) 10' 10" DIA
 CONCRETE CLASS B (1-2-4) 10' 10" DIA
 REINFORCING STEEL 305 LB
 FOR DETAILS OF DROP INLET SEE
 SHEET 10 OF 72.

FED. ROAD DIST. NO.	STATE	FED. AID YEAR	FISCAL YEAR	SHEET NO.	TOTAL SHEETS
11	VT	1952	1952	25	72



BM #10 South East Corner East abutment of old trolley bridge ELEV 573.84

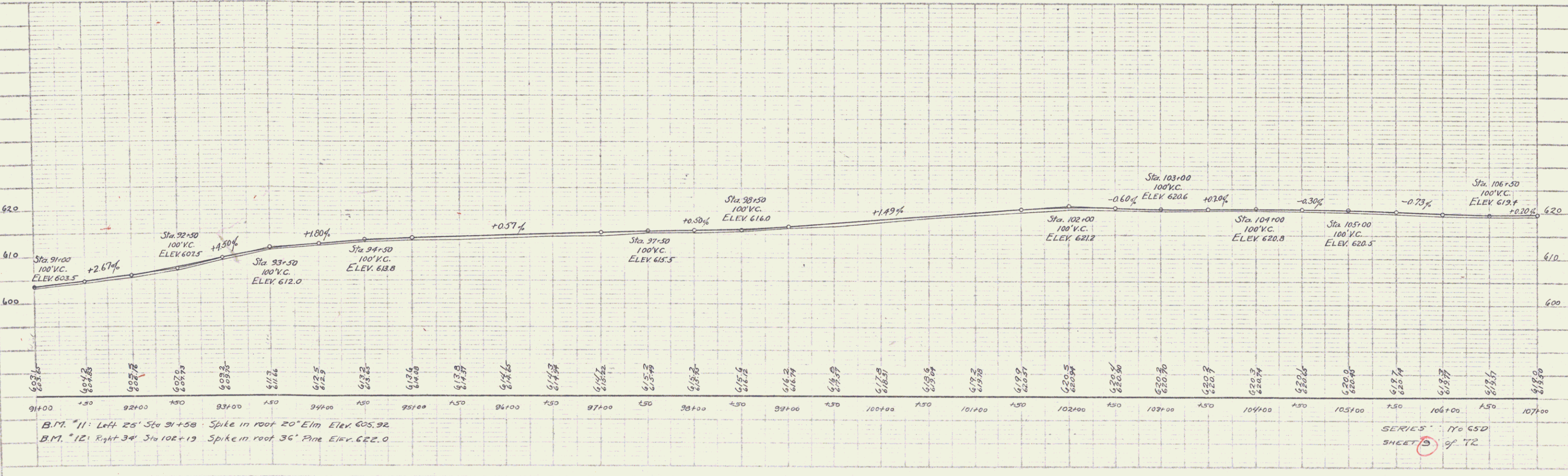
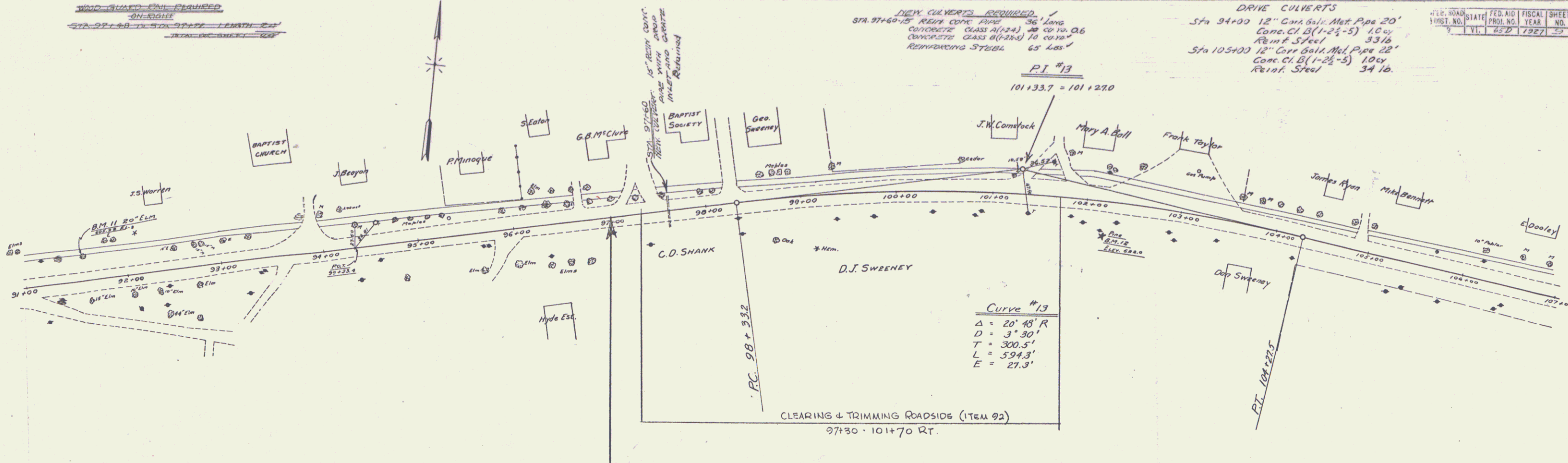
SHEET F 170 65D
 SHEET 8 of 72

WOOD-GRADED PAUL REQUIRED
ON RIGID
STA 97+00 TO 98+00
TOTAL LENGTH 100'

DRIVE CULVERTS REQUIRED
STA 97+60-85 RISE CONC. PIPE 36" LONG
CONCRETE CLASS A(1-2) 40 CY TO 60 TO 0.6
CONCRETE CLASS B(1-2) 10 CY TO 0.10
REINFORCING STEEL 65 LBS

DRIVE CULVERTS
Sta 94+00 12" Cor. Ball. Met. Pipe 20'
Conc. Cl. B(1-2) 5) 10 cy
Reinf. Steel 33 lb
Sta 105+00 12" Cor. Ball. Met. Pipe 22'
Conc. Cl. B(1-2) 5) 10 cy
Reinf. Steel 34 lb

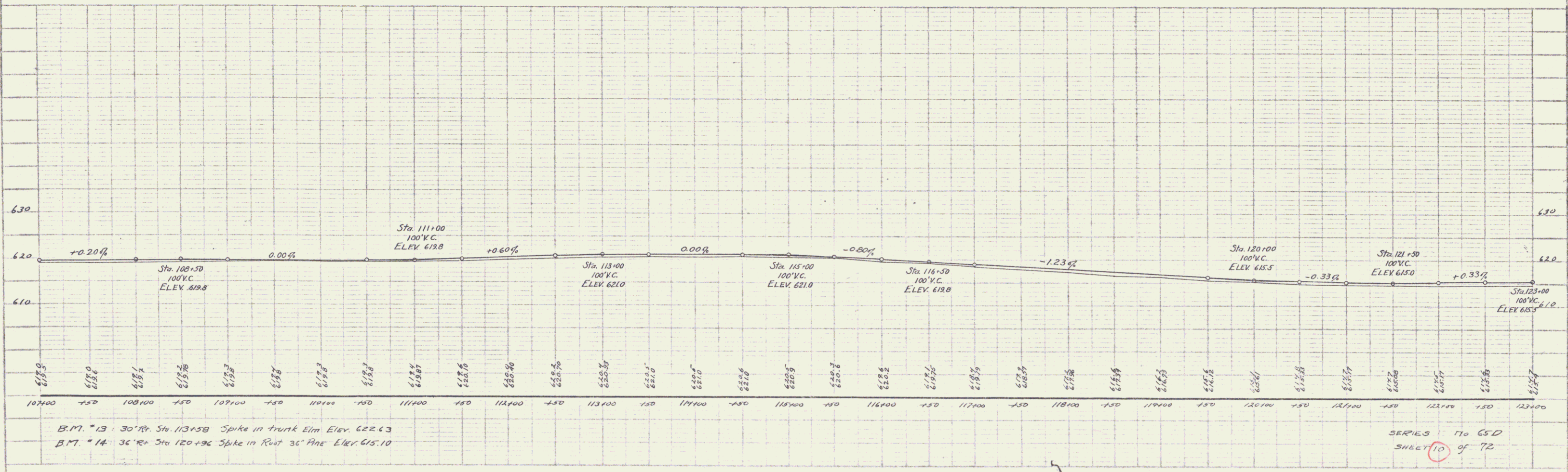
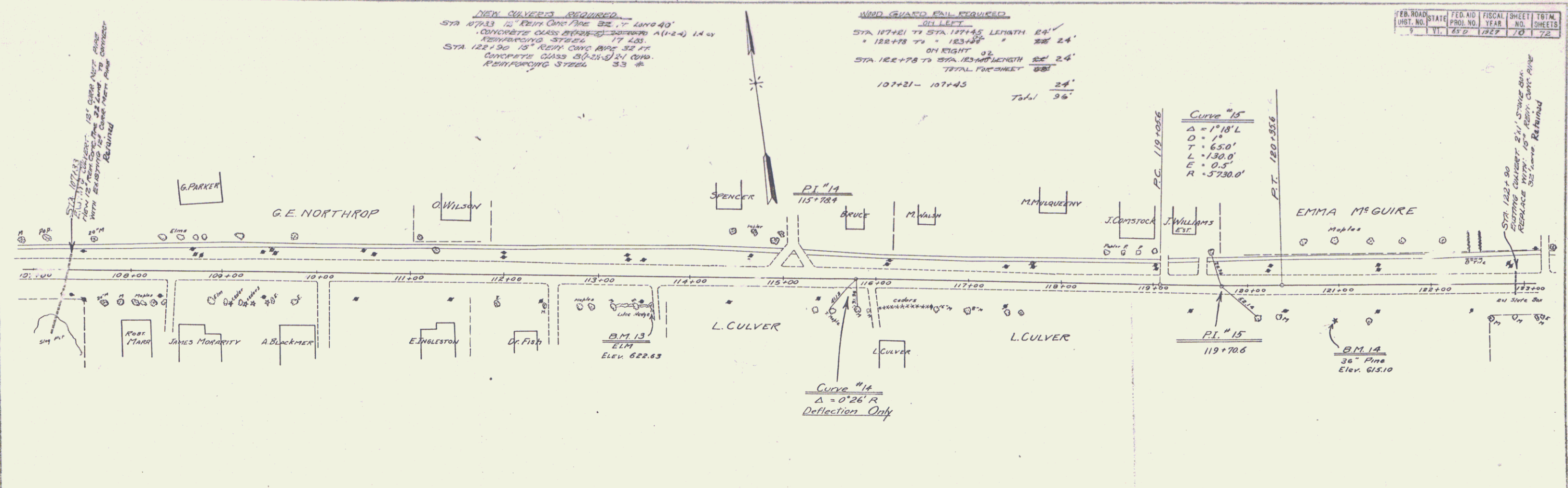
FISCAL YEAR	FISCAL YEAR	FISCAL YEAR	FISCAL YEAR	FISCAL YEAR	FISCAL YEAR
1962	1962	1962	1962	1962	1962



B.M. "11" Left 25' Sta 91+58 Spike in root 20' Elm Elev. 605.92
B.M. "12" Right 34' Sta 102+19 Spike in root 36' Pine Elev. 622.0

SERIES 110 650
SHEET 5 of 72

FED. ROAD DIST. NO.	STATE	FED. AID PROJ. NO.	FISCAL YEAR	SHEET NO.	TOTAL SHEETS
VI	45	1227	70	72	



B.M. #13 30" R. Sta 113+58 Spike in trunk Elm Elev. 622.43
 B.M. #14 36" R. Sta 120+96 Spike in Rust 36" Pine Elev. 615.10

SERIES 170 65D
 SHEET 10 of 72

WOOD GUARD RAIL REQUIRED ON LEFT

STATION	START	END	LENGTH	QTY
" 123+38	TO	" 123+62	"	24'
" 135+70	TO	" 135+94	"	24'

WOOD GUARD RAIL REQUIRED ON RIGHT

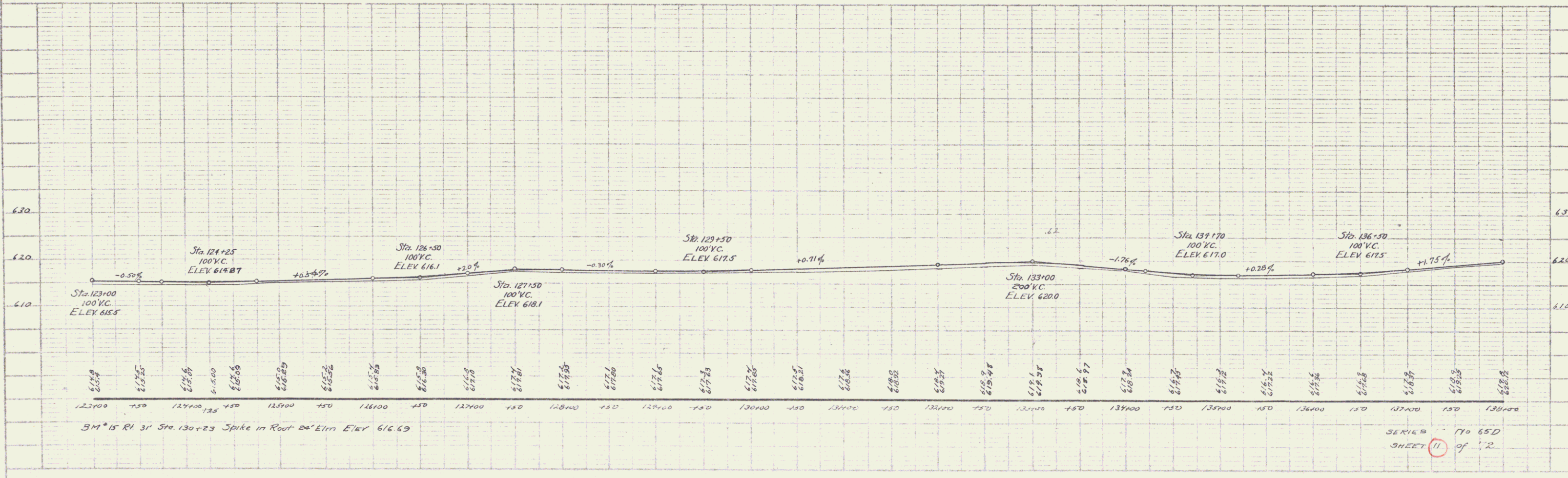
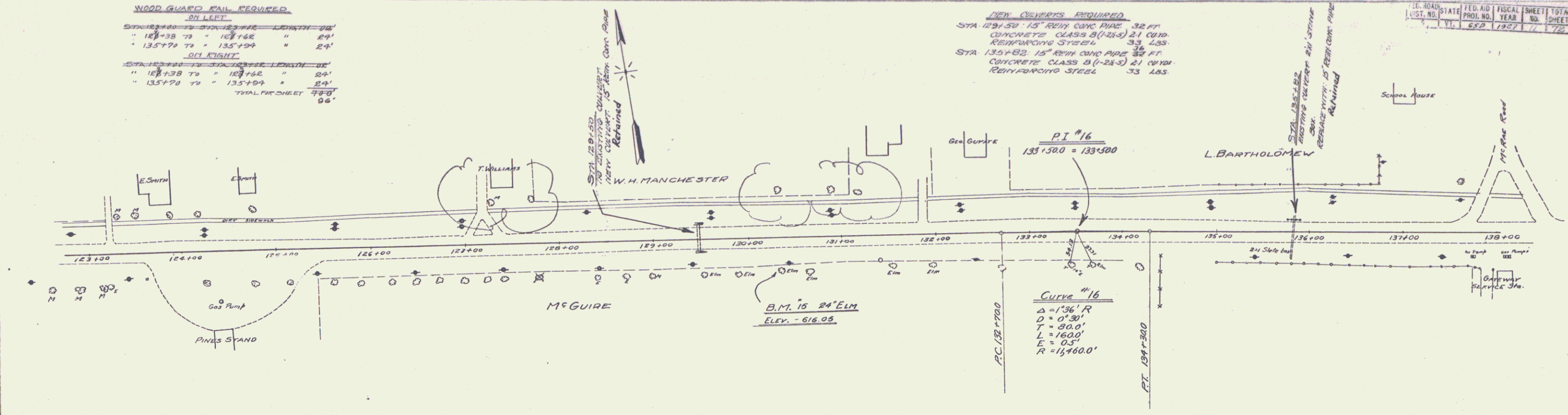
STATION	START	END	LENGTH	QTY
" 123+38	TO	" 123+62	"	24'
" 135+70	TO	" 135+94	"	24'

TOTAL PAGESHEET 488'
96'

IRON CURBS REQUIRED

STA 129+50 - 15" REIN CONC PIPE	32 FT
CONCRETE CLASS B (1-24-5)	21 CY
REINFORCING STEEL	33 LBS
STA 135+82 - 15" REIN CONC PIPE	37 FT
CONCRETE CLASS B (1-24-5)	21 CY
REINFORCING STEEL	33 LBS

EST. NO.	STATE	FED. AID	FISCAL YEAR	SHEET NO.	TOTAL SHEETS
11	650	1927	11	12	



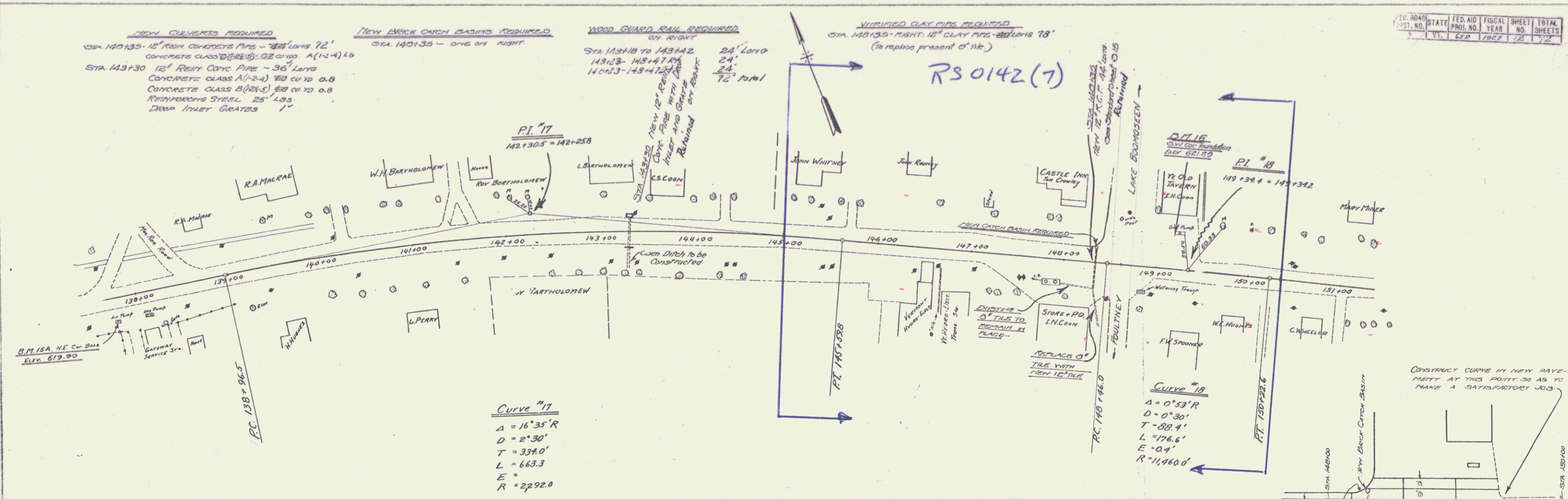
SERIES 770 650
SHEET 11 of 12

NEW CURBWAYS REQUIRED
 STA 140+35 - 12" REIN. CONCRETE PAV. - 36' LONG 72"
 CONCRETE CLASS B (25-5) @ 0.8
 STA 143+30 - 12" REIN. CONCRETE PAV. - 36' LONG
 CONCRETE CLASS A (1-4) @ 0.8
 CONCRETE CLASS B (25-5) @ 0.8
 REINFORCING STEEL 25' L.G.S.
 DEEP INLET GRATES 1'

NEW BRICK CATCH BASINS REQUIRED
 STA. 140+35 - ONE ON RIGHT

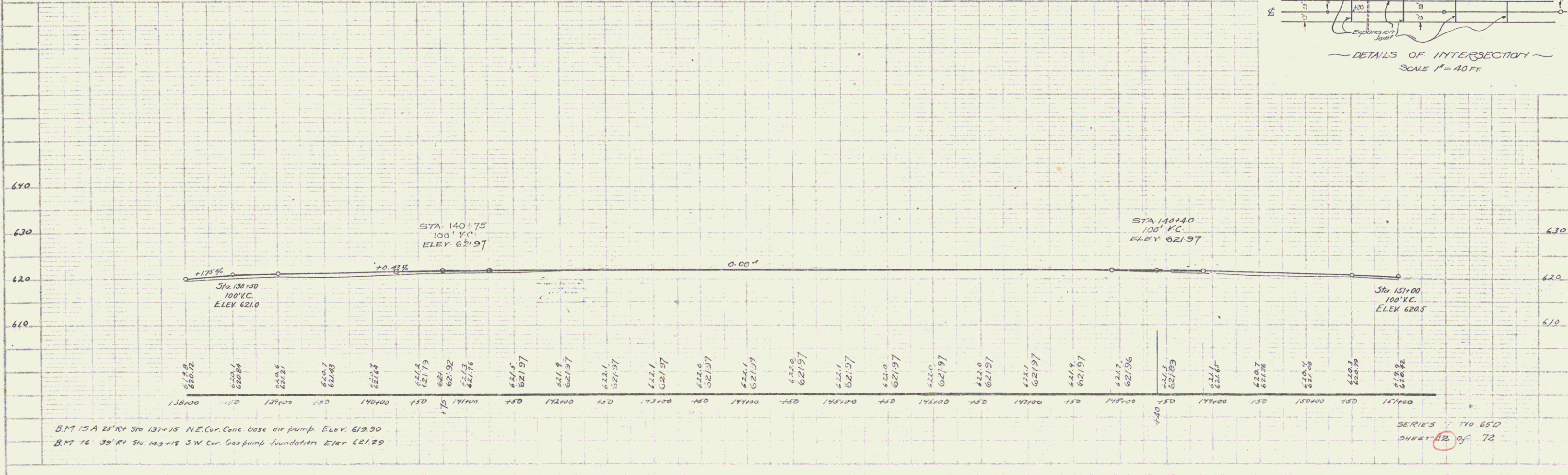
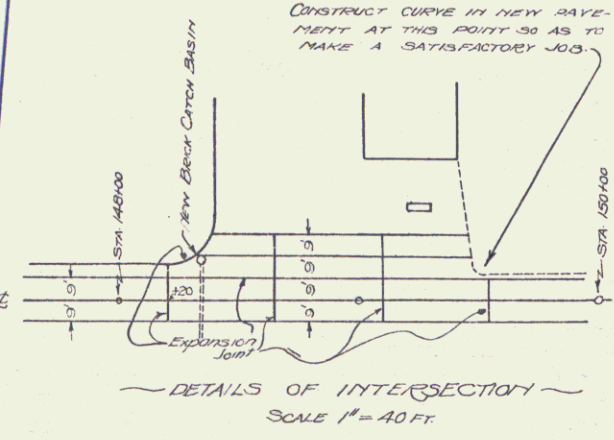
WOOD GUARD RAIL REQUIRED
 ON RIGHT
 STA. 143+18 TO 143+42
 143+23 - 145+47
 140+23 - 143+42
 24' LONG
 24'
 24'
 72' TOTAL

VITRIFIED CLAY PIPE REQUIRED
 STA. 143+35 - RIGHT 12" CLAY PIPE - 24' LONG 78'
 (to replace present 6" tile)



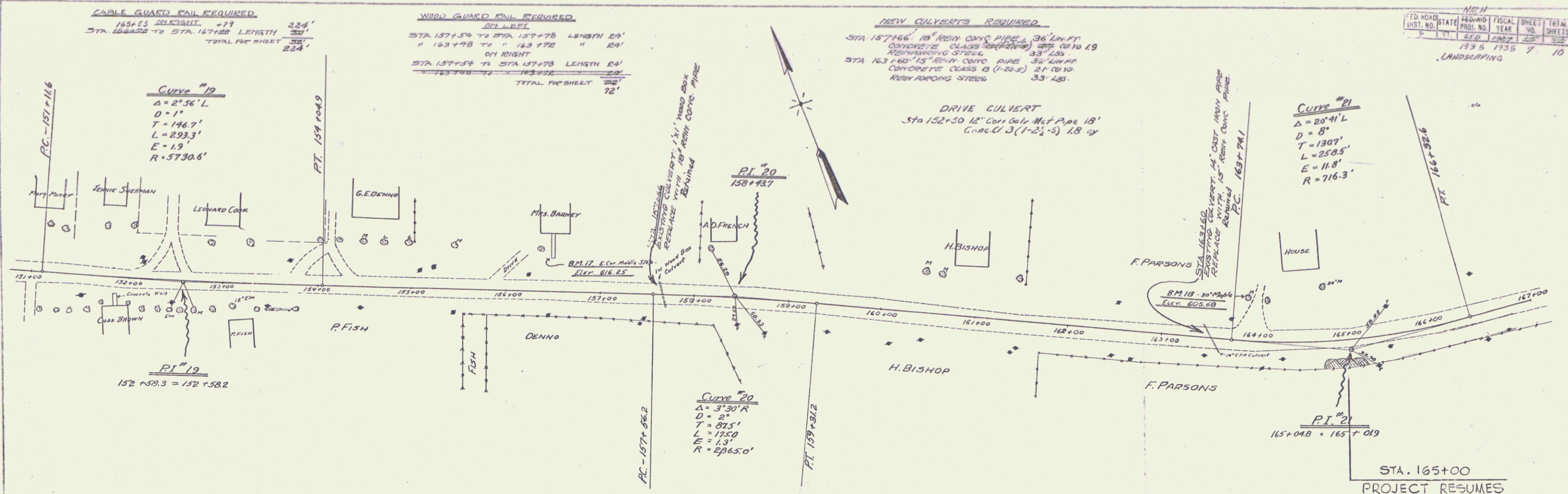
Curve #17
 $\Delta = 16^{\circ}35'R$
 $D = 2^{\circ}30'$
 $T = 339.0'$
 $L = 663.3$
 $E =$
 $R = 2292.0$

Curve #18
 $\Delta = 0^{\circ}53'R$
 $D = 0^{\circ}30'$
 $T = 88.4'$
 $L = 176.6'$
 $E = 0.4'$
 $R = 11,960.0'$



B.M. 15A 25' RI. Sta 137+25 N.E. Cor. Conc. base air pump ELEV. 619.30
 B.M. 16 35' RI. Sta 143+18 S.W. Cor. Gas pump foundation ELEV. 621.29

SERIES 170 65'D
 SHEET 12 of 72



CABLE GUARD RAIL REQUIRED
 165+55 DELIGHT +19
 STA 166+22 TO STA 167+00 LENGTH 78'
 TOTAL FOR SHEET 224'

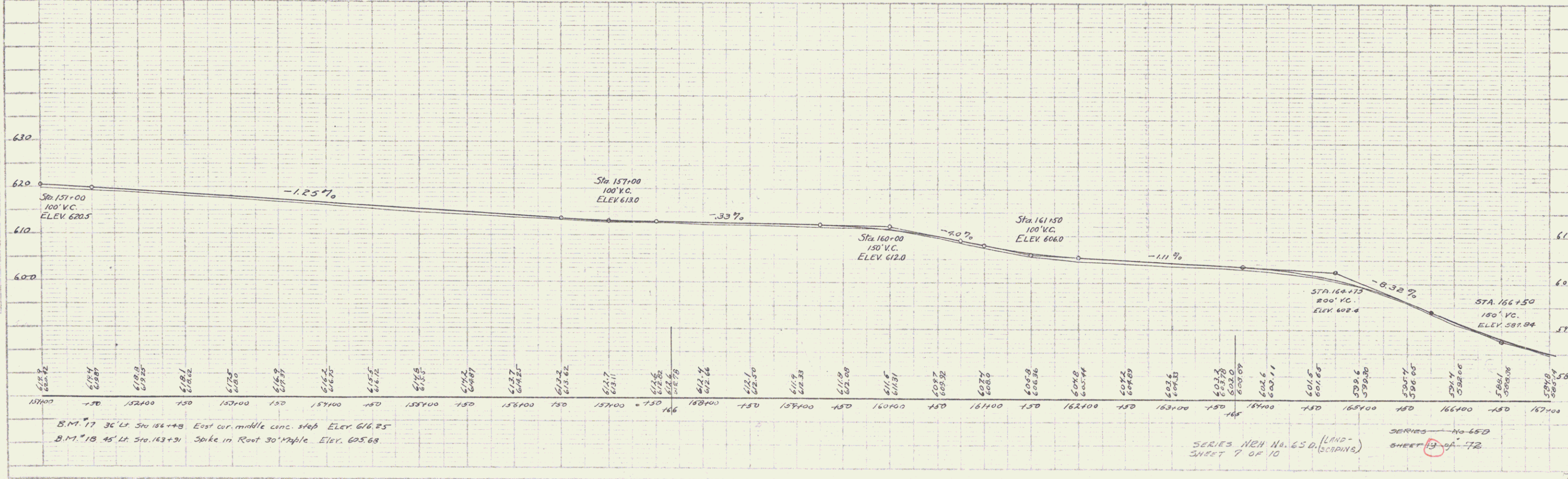
WOOD GUARD RAIL REQUIRED
 ON LEFT
 STA 157+54 TO STA 157+78 LENGTH 24'
 ON RIGHT
 STA 157+54 TO STA 157+78 LENGTH 24'
 TOTAL FOR SHEET 72'

NEW CULVERTS REQUIRED
 STA 157+66 18" REIN. CONC. PIPE 36' LIN. FT.
 CONCRETE CLASS 5000 (21) 33' LIN. FT.
 REINFORCING STEEL 33' LIN. FT.
 STA 163+60 15" REIN. CONC. PIPE 36' LIN. FT.
 CONCRETE CLASS B (1-22.5) 21' LIN. FT.
 REINFORCING STEEL 33' LIN. FT.

FD. ROAD	STATE	144000	FISCAL YEAR	SHEET NO.	TOTAL SHEETS
1935	1735	7	10		

LANDSCAPING

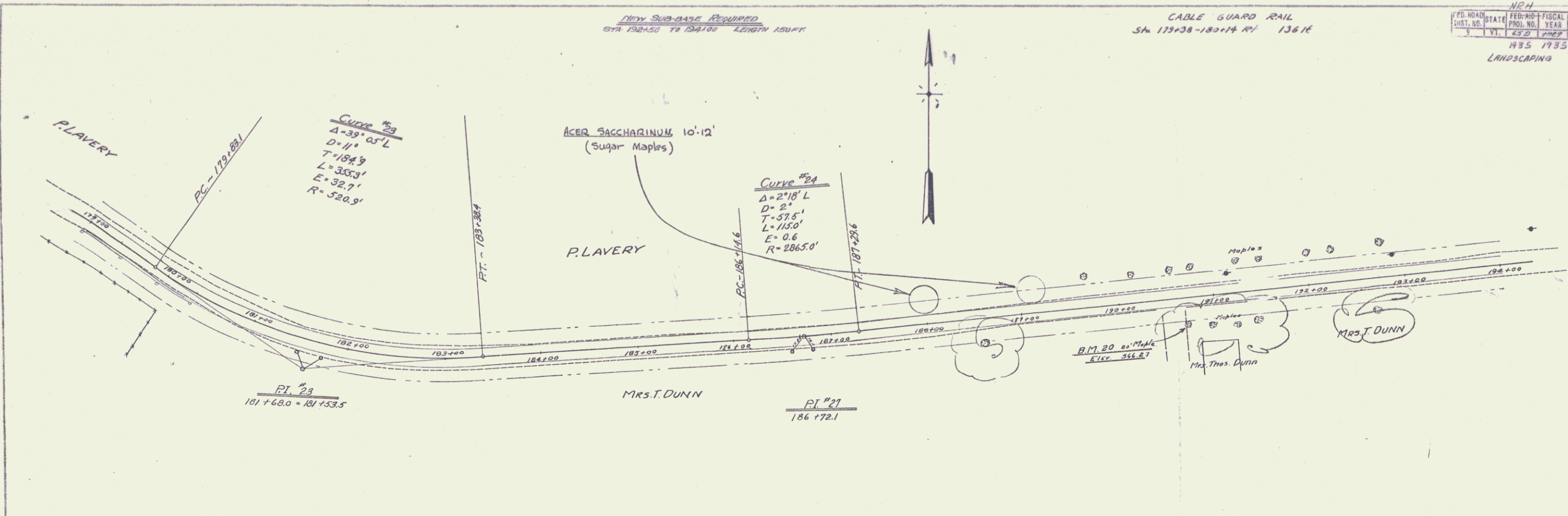
PLAN
 DATE 1935
 SCALE 1" = 40'



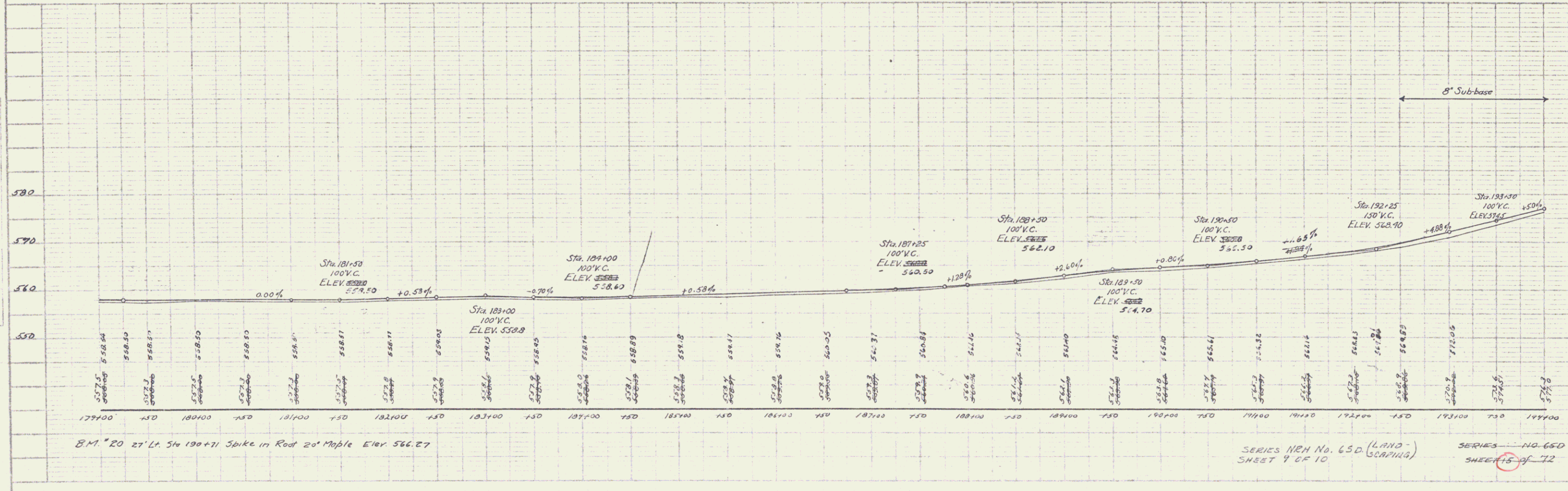
B.M. 17 36' L.F. 310 156+48 East cor. middle conc. slab Elev 616.25
 B.M. 18 45' L.F. 310 163+91 Spike in Root 30 Maple Elev 605.68

SERIES No. 650 (LAND-SCAPING)
 SHEET 7 OF 10
 SERIES No. 650
 SHEET 13 OF 12

PLAN
 DATE: 1935
 DRAWN BY: [illegible]
 CHECKED BY: [illegible]



NEH		SHEET TOTAL	
FD. ROAD	STATE	FED. AID	FISCAL YEAR
1	VT	65.0	1935
435		10	
LANDSCAPING			



BM #20 27' Lt. Sta 190+71 Spike in Rod 20' Maple Elev. 566.27

SERIES NEH No. 650 (LAND SCAPING)
 SHEET 9 OF 10

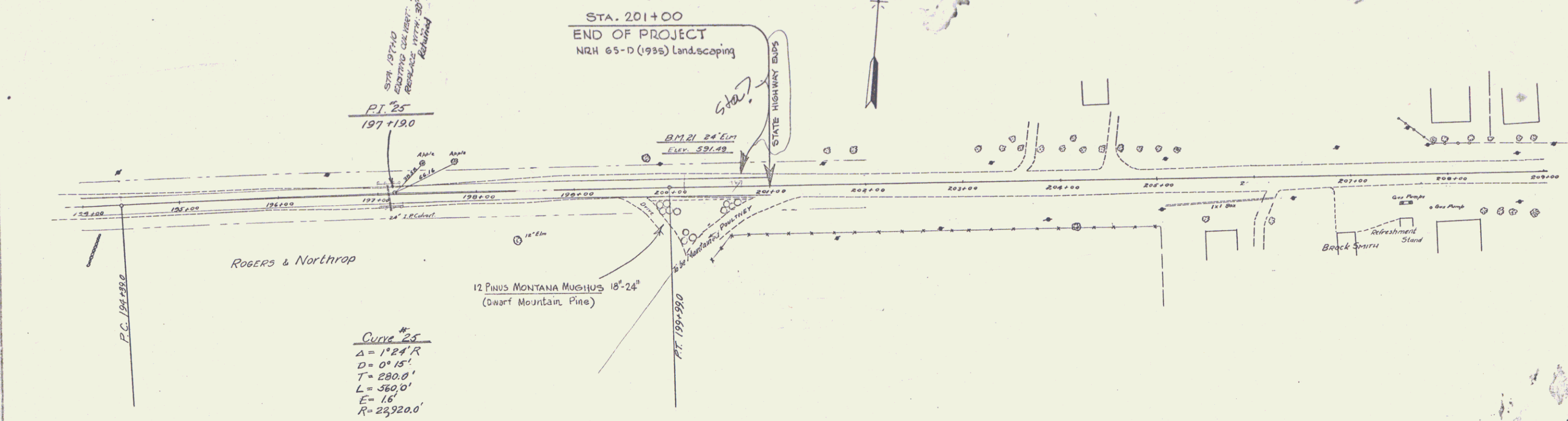
SERIES NO. 650
 SHEET 15 OF 12

WOOD GUARD RAIL REQUIRED
 GULLY
 STA. 196+98 TO STA. 197+88 LENGTH 24'
 GULLY
 STA. 196+98 TO STA. 197+22 LENGTH 24'
 TOTAL FOR SHEET 48'

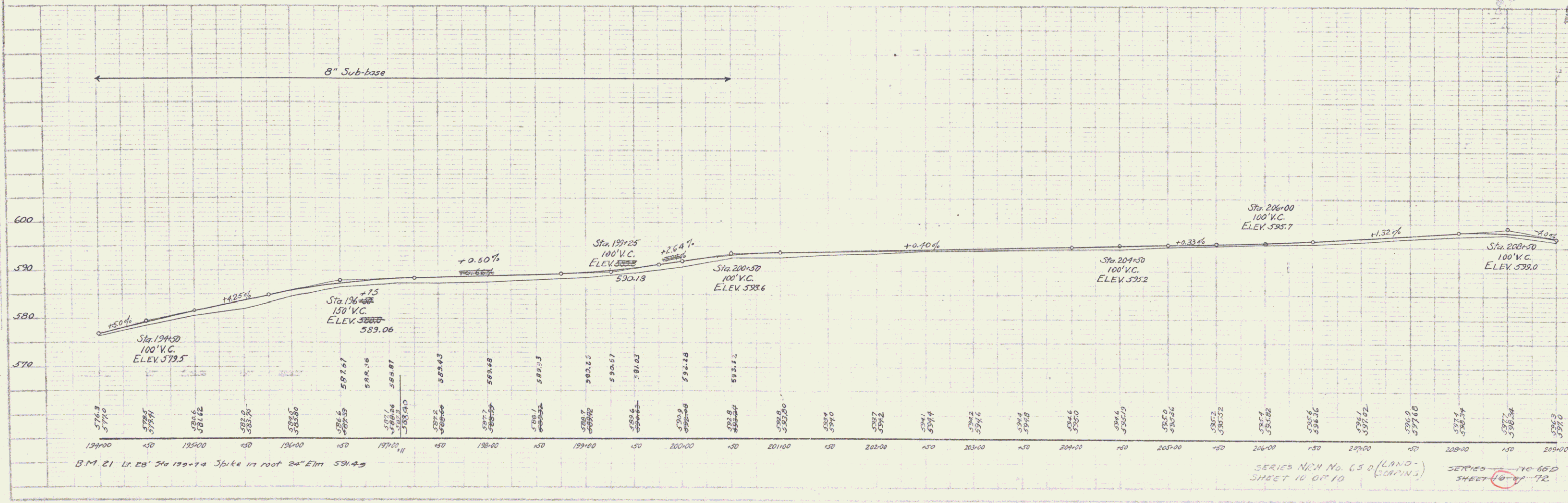
NEW CULVERTS REQUIRED
 STA. 197+10 30" REIN. CONC. PIPE LENGTH 32'
 CONCRETE CLASS A (1-2) 3.5' DIA
 REINFORCING STEEL 6# 13S

SUB-BASE REQUIRED
 STA. 194+00 TO 200+50 LENGTH 650 FT.

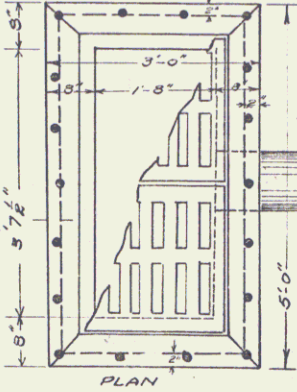
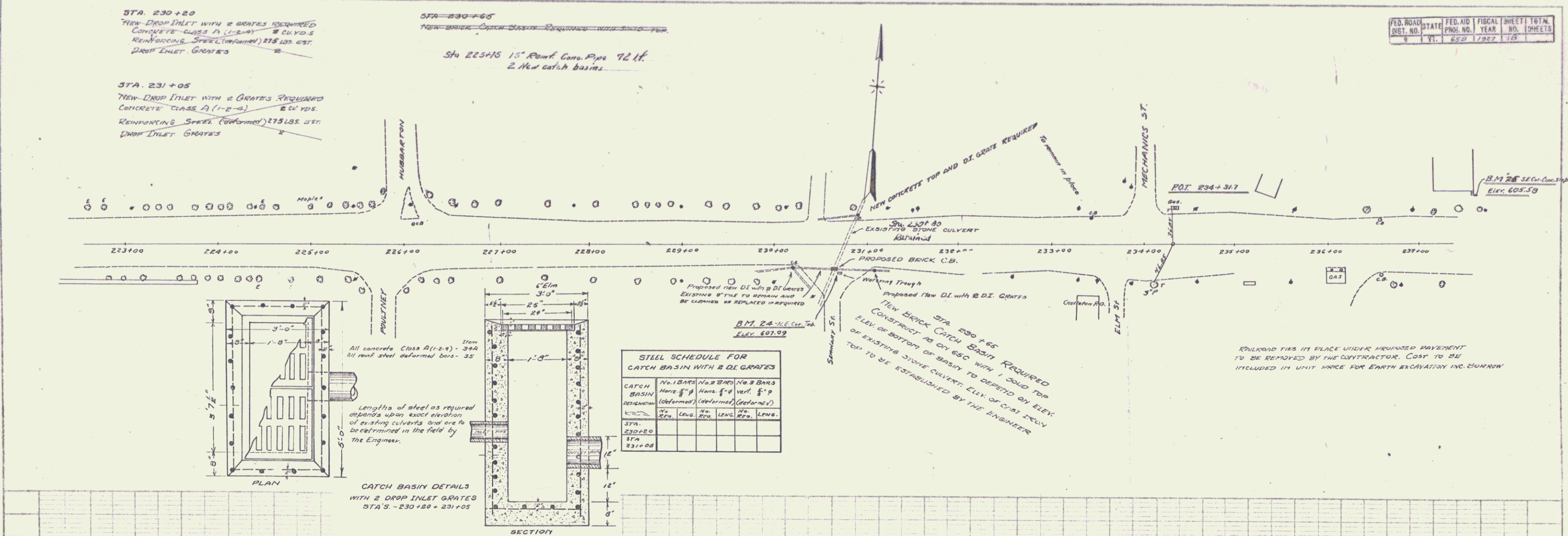
N211				
FED. ROAD DIST. NO.	STATE	FISCAL YEAR	SHEET NO.	TOTAL SHEETS
1	VT	1935	1135	10
LANDSCAPING				



Curve #25
 $\Delta = 1^{\circ}24'R$
 $D = 0^{\circ}15'$
 $T = 280.0'$
 $L = 360.0'$
 $E = 16'$
 $R = 29920.0'$



SERIES NCH No. 650 (LANDSCAPING)
 SHEET 14 OF 10
 SERIES NCH No. 650 (LANDSCAPING)
 SHEET 10 OF 10



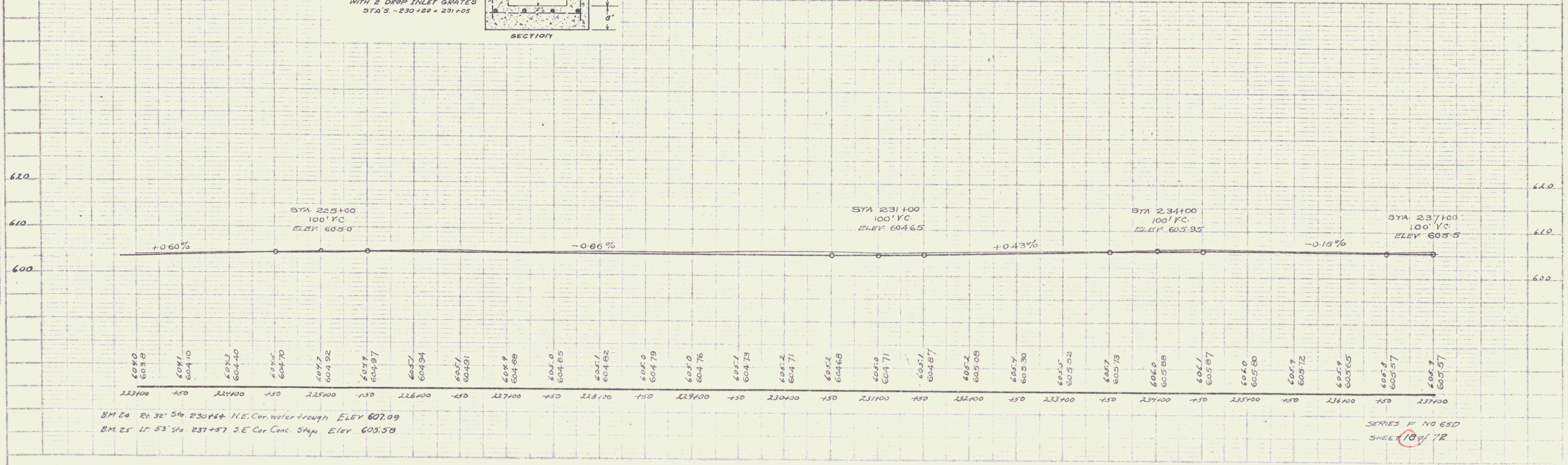
All concrete Class A (1-2-4) - 344
15" round steel deformed bars - 35

Lengths of steel as required depends upon exact elevation of existing culverts and are to be determined in the field by the Engineer.

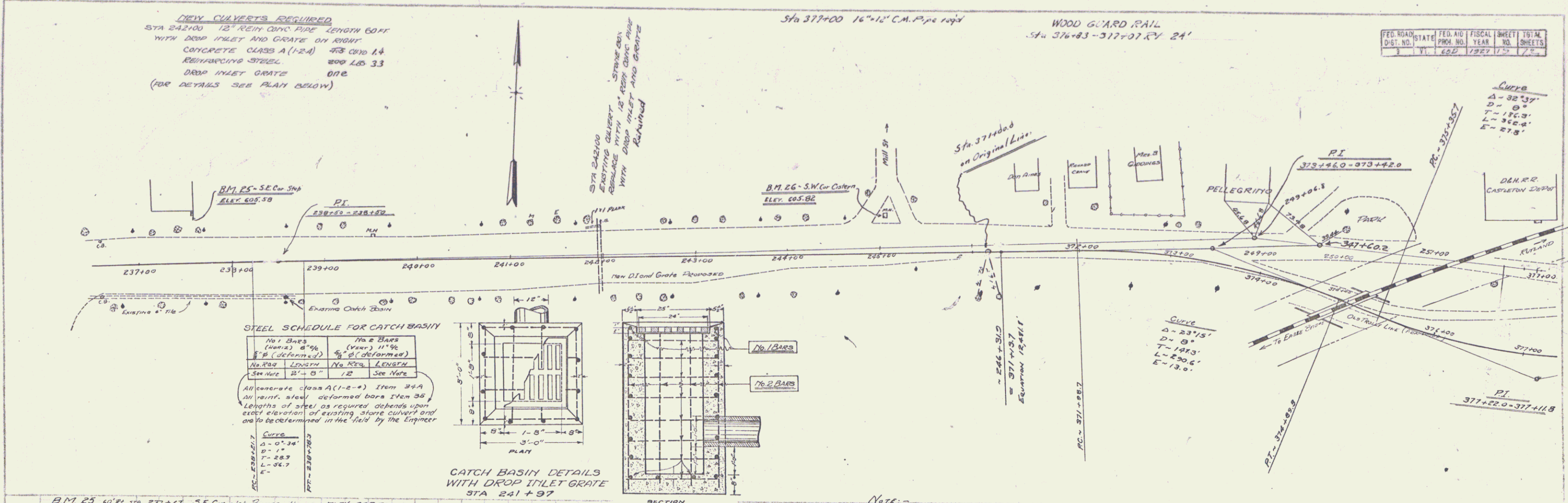
CATCH BASIN DETAILS WITH 2 DROP INLET GRATES STA'S - 230+20 - 231+05

STEEL SCHEDULE FOR CATCH BASIN WITH 2 DL GRATES

CATCH BASIN	No. 1 BARS	No. 2 BARS	No. 3 BARS	No. 4 BARS
REQ'D	REQ'D	REQ'D	REQ'D	REQ'D
STA.	STA.	STA.	STA.	STA.
230+20				
231+05				



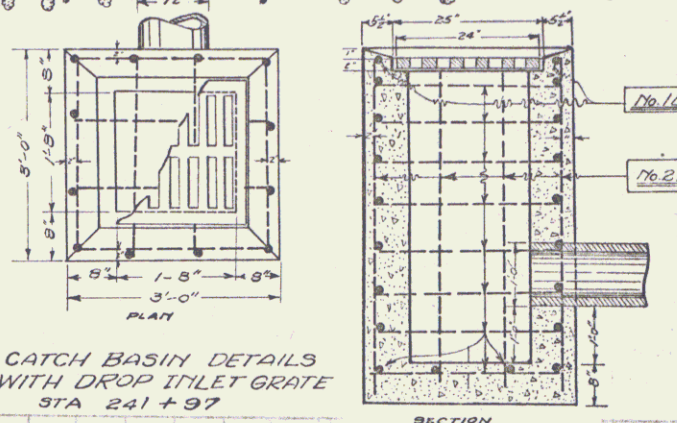
FED. ROAD DIST. NO.	STATE	FISCAL YEAR	SHEET NO.	TOTAL SHEETS
1	VI.	1927	12	75



STEEL SCHEDULE FOR CATCH BASIN

No. 1 BARS (WELLS) 8" x 6"	No. 2 BARS (WELLS) 11" x 6"
See Note	See Note

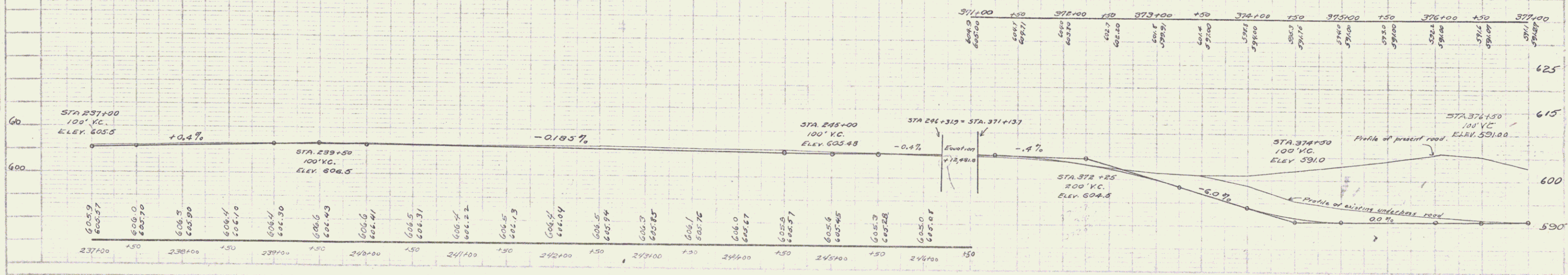
All concrete class A (1-2-4) Item 3+4
 All reinf. steel deformed bars Item 35
 Lengths of steel as required depends upon exact elevation of existing stone culvert and to be determined in the field by the Engineer



B.M. 25 10' RI STA 237+67 S.E. Cor. of Runsey House ELEV. 605.58
 B.M. 26 17' RI STA 245+10 S.W. Cor. Eastern ELEV. 605.82

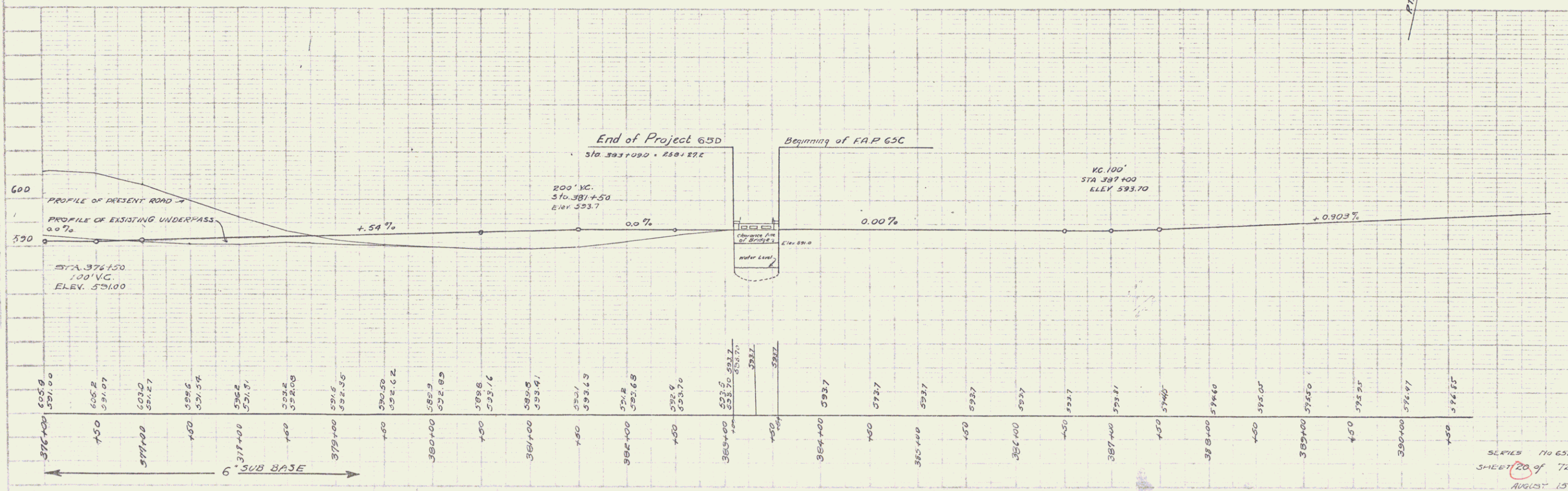
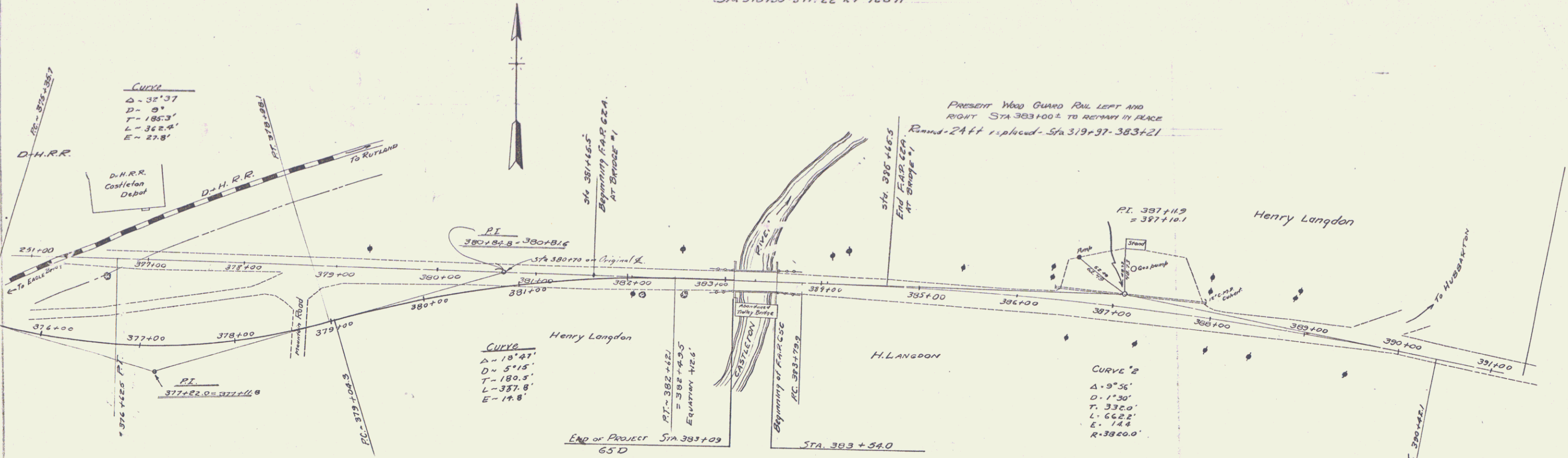
NOTE:
 Provision is to be made during construction to take care of water at Approx Sta. 373+00 as left in order to prevent it following roadway ditch down 6.0% Grade to Underpass.

THE DELEWARE AND HUDSON RAILROAD IS TO CONSTRUCT GRADING FROM STA 372+00 TO 380+00 AND ALSO THE CONCRETE PAVEMENT WITHIN THE LIMITS OF ITS RIGHT OF WAY IN STA 374+55 TO STA 375+50 (APPROX)
 6" GRAVEL SUB-BASE STA 376+00 TO STA 379+25 IS ALSO INCLUDED IN THE WORK TO BE DONE BY THE RAILROAD
 Proper Drainage at Sta 375+50 to be taken care of by the Railroad during their part of the Construction.
 Exact method of Widening Pavement and Type of Curb Protection at Pier to be worked out in the field during Construction.



CABLE GUARD RAIL
 Sta 381+01 - 383+084.208 H
 Sta 378+00 - 377+22 Rt 128 H

REV. NO.	DATE	BY	CHKD.	SHEET NO.	TOTAL SHEETS
1	6-5-27	20	72



SERIES 710 65D
 SHEET 20 OF 72
 AUGUST 15th 1927

A