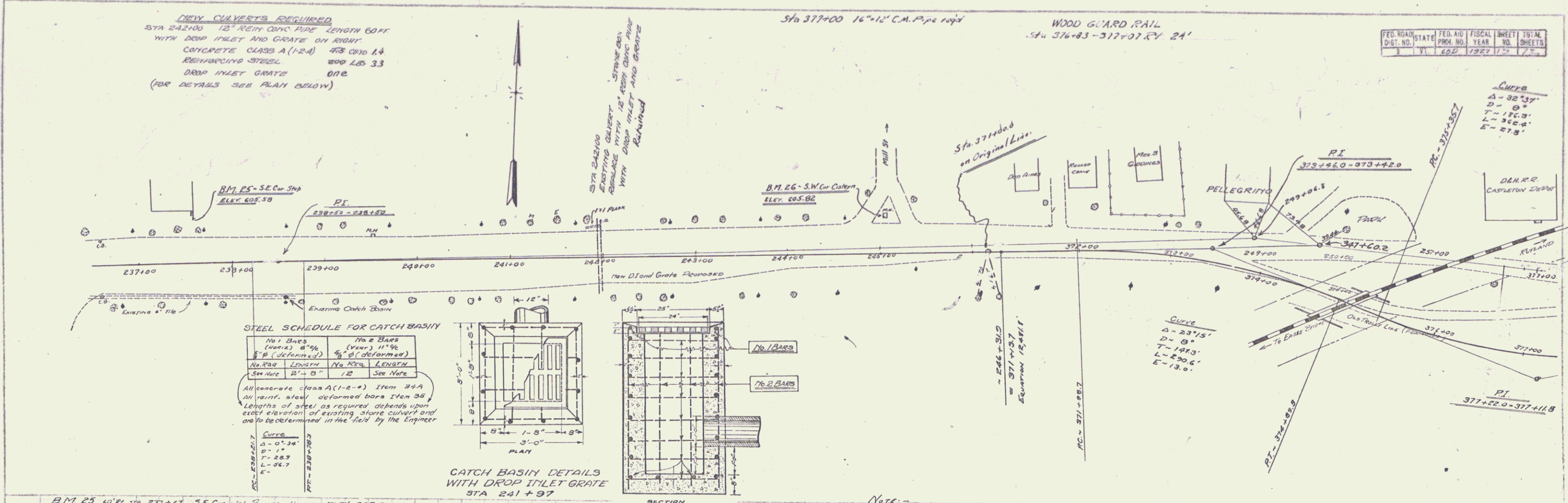


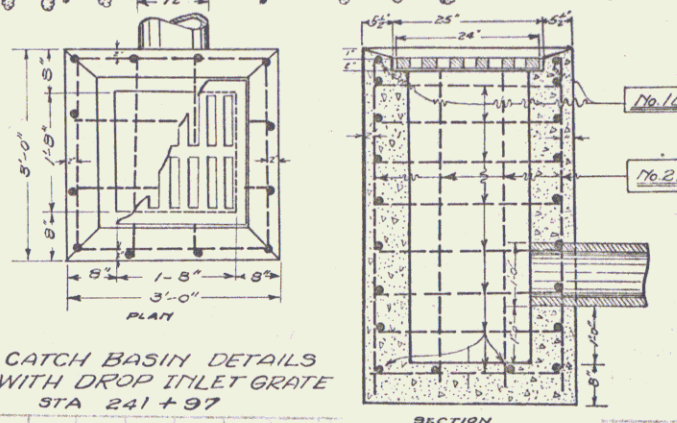
FED. ROAD DIST. NO.	STATE	FISCAL YEAR	SHEET NO.	TOTAL SHEETS
1	Vt.	1927	12	75



**STEEL SCHEDULE FOR CATCH BASIN**

No. 1 BARS (WELLS) 8" x 6"	No. 2 BARS (WELLS) 11" x 6"
See Note	See Note

All concrete class A (1-2-4) Item 3+4  
All reinf. steel deformed bars Item 35  
Lengths of steel as required depends upon exact elevation of existing stone culvert and to be determined in the field by the Engineer



B.M. 25 10' RI STA 237+67 S.E. Cor. Shop-Rumsey House ELEV. 605.58  
B.M. 26 87' RI STA 245+10 S.W. Cor. Eastern ELEV. 605.82

**Note:**  
Provision is to be made during construction to take care of water at Approx Sta. 373+00 as left in order to prevent it following roadway ditch down 6.0% Grade to Underpass.

THE DELEWARE AND HUDSON RAILROAD IS TO CONSTRUCT GRADING FROM STA 372+00 TO 380+00 AND ALSO THE CONCRETE PAVEMENT WITHIN THE LIMITS OF ITS RIGHT OF WAY IN STA 374+55 TO STA 375+50 (APPROX)  
6" GRAVEL SUB-BASE STA 376+00 TO STA 379+25 IS ALSO INCLUDED IN THE WORK TO BE DONE BY THE RAILROAD  
Proper Drainage at Sta 375+00 to be taken care of by the Railroad during their part of the Construction.  
Exact method of Widening Pavement and Type of Curb Protection at Pier to be worked out in the field during Construction.

