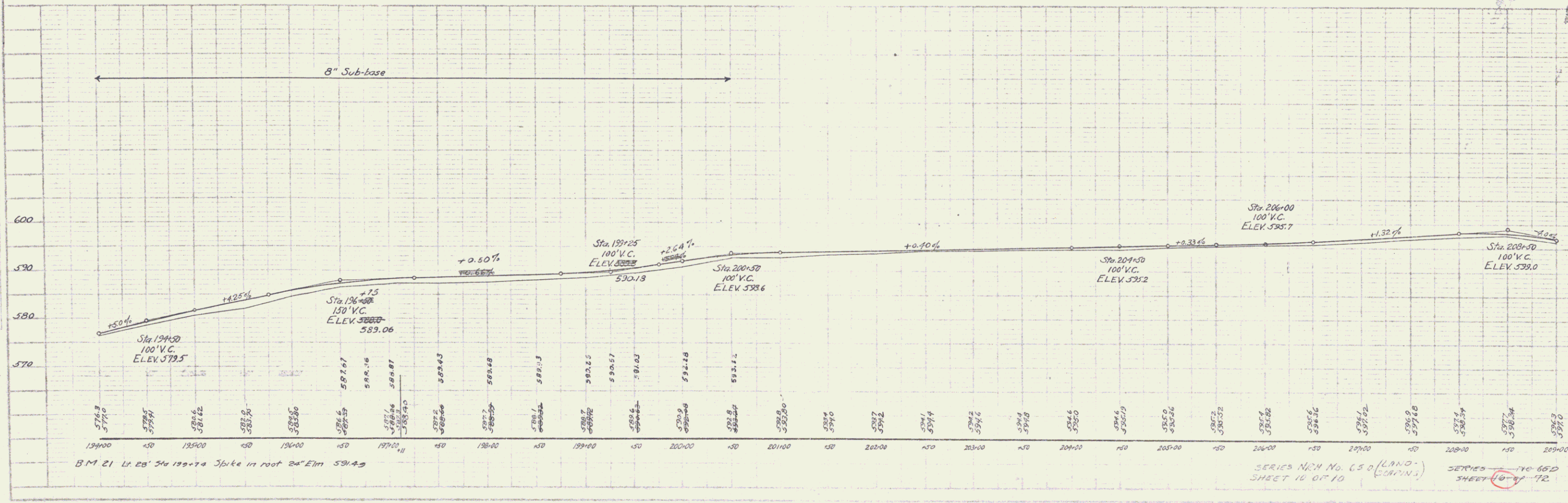
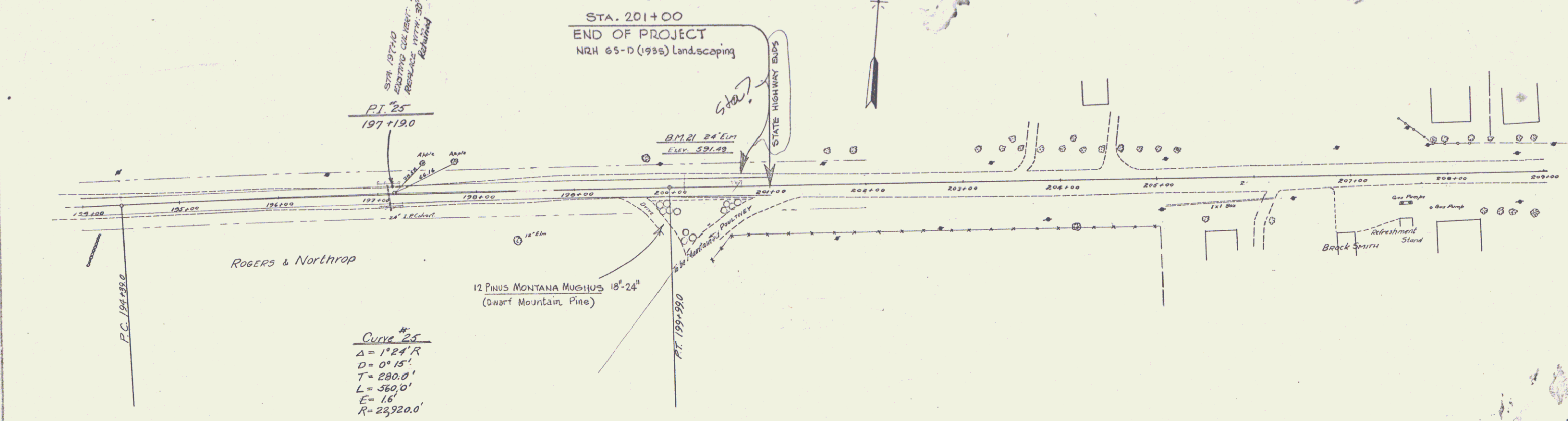


WOOD GUARD RAIL REQUIRED
 GULLY
 STA. 196+98 TO STA. 197+08 LENGTH 24'
 GULLY
 STA. 196+98 TO STA. 197+22 LENGTH 24'
 TOTAL FOR SHEET 48'

NEW CULVERTS REQUIRED
 STA. 197+10 30" REIN. CONC. PIPE LENGTH 32'
 CONCRETE CLASS A (1-2) 3.5' DIA
 REINFORCING STEEL 6# 13S

SUB-BASE REQUIRED
 STA. 194+00 TO 200+50 LENGTH 650 FT.

N211		FISCAL YEAR		SHEET TOTAL	
FED. ROAD DIST. NO.	STATE	PROJ. NO.	YEAR	NO.	SHEETS
1	VT	650	1935	14	10
LANDSCAPING					



SERIES N211 No. 650 (LANDSCAPING) SHEET 14 OF 10
 SERIES N211 No. 650 (LANDSCAPING) SHEET 14 OF 10