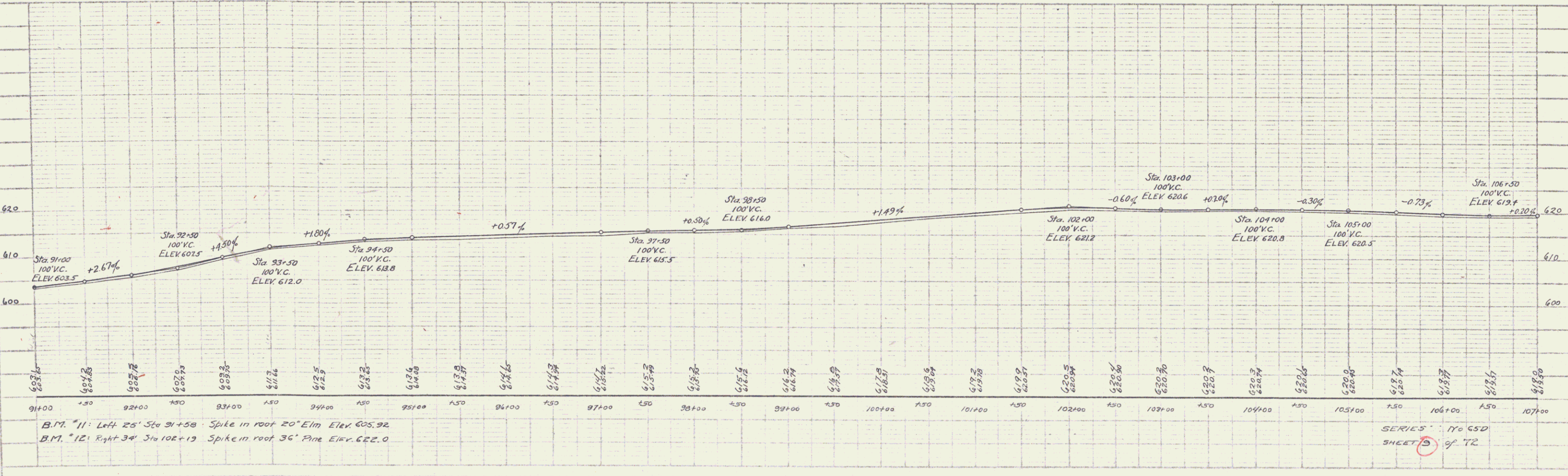
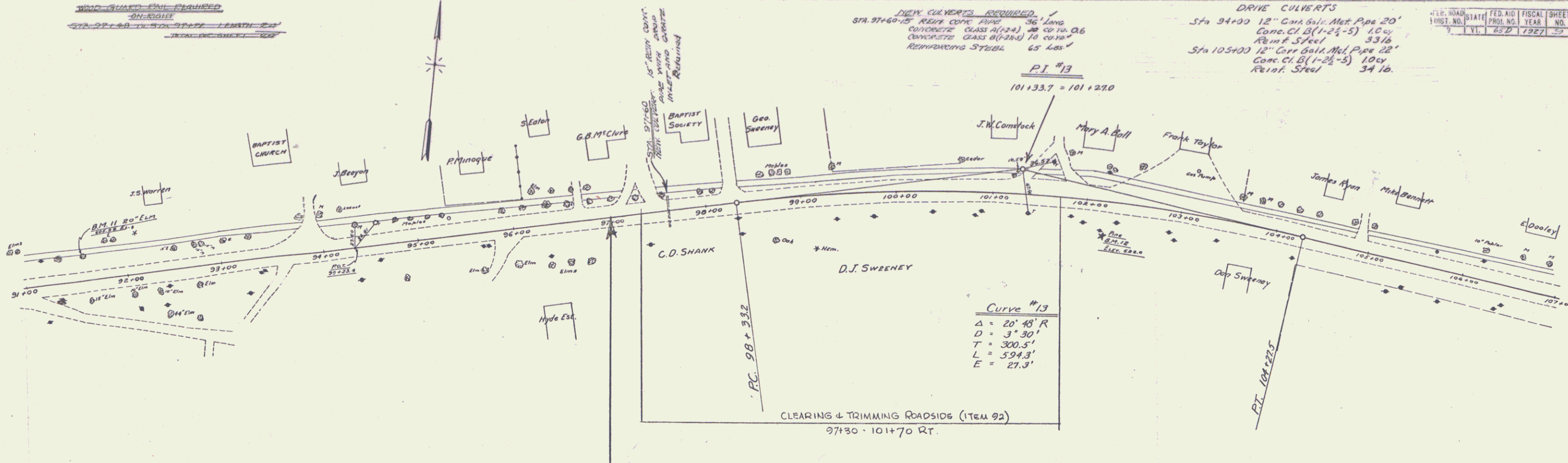


WOOD-GRADED PAUL REQUIRED
ON RIGID
STA 97+00 TO 98+00
TOTAL LENGTH 100'

DRIVE CULVERTS REQUIRED
STA 97+60-85 RISE CONC. PIPE 36' LONG
CONCRETE CLASS A(1-2-4) 40 cu yd
CONCRETE CLASS B(1-2-5) 10 cu yd
REINFORCING STEEL 65 lbs

DRIVE CULVERTS
Sta 94+00 12" Cor. Ball. Met. Pipe 20'
Conc. Cl. B(1-2-5) 10 cy
Reinf. Steel 33 lb
Sta 105+00 12" Cor. Ball. Met. Pipe 22'
Conc. Cl. B(1-2-5) 10 cy
Reinf. Steel 34 lb

FISCAL YEAR	FISCAL YEAR	FISCAL YEAR	FISCAL YEAR	FISCAL YEAR	FISCAL YEAR
1962	1962	1962	1962	1962	1962



B.M. "11" Left 25' Sta 91+58 Spike in root 20' Elm Elev. 605.92
B.M. "12" Right 34' Sta 102+19 Spike in root 36' Pine Elev. 622.0

SERIES 110 650
SHEET 5 of 72