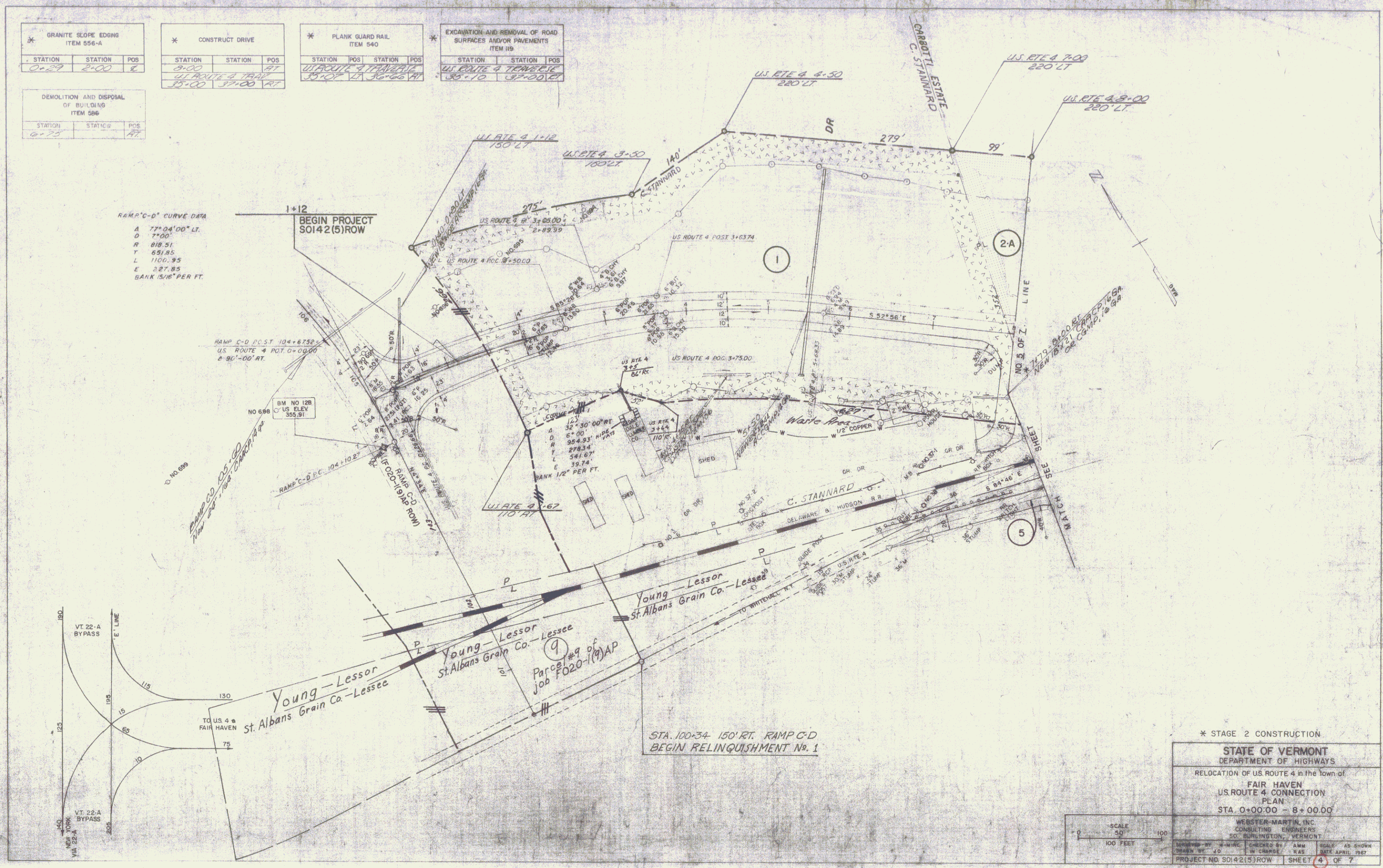


* GRANITE SLOPE EDGWS ITEM 556-A			* CONSTRUCT DRIVE			* PLANK GUARD RAIL ITEM 540			* EXCAVATION AND REMOVAL OF ROAD SURFACES AND/OR PAVEMENTS ITEM 419			
STATION	STATION	POS	STATION	STATION	POS	STATION	POS	STATION	POS	STATION	POS	
0+29	2+00	E	0+00		RT	15+07	17	16+66	RT	135+10	137+00	LT
			US ROUTE 4 TRAIL			US ROUTE 4 TRAIL			US ROUTE 4 TRAIL			
			35+00			37+00			37+00			

DEMOLITION AND DISPOSAL OF BUILDING ITEM 586		
STATION	STATION	POS
0+25		RT

RAMP C-D CURVE DATA  
 A 77° 04' 00" LT.  
 D 7° 00'  
 R 818.51  
 T 651.85  
 L 1106.95  
 E 227.85  
 BANK 15/16" PER FT.



\* STAGE 2 CONSTRUCTION

STATE OF VERMONT  
 DEPARTMENT OF HIGHWAYS

RELOCATION OF US ROUTE 4 in the town of  
 FAIR HAVEN  
 US ROUTE 4 CONNECTION  
 PLAN  
 STA. 0+00:00 - 8+00:00

WEBSTER-MARTIN, INC.  
 CONSULTING ENGINEERS  
 50 BURLINGTON, VERMONT

SCALE 1" = 100 FEET

PROJECT NO. SOI 42(5) ROW SHEET 3 OF 7