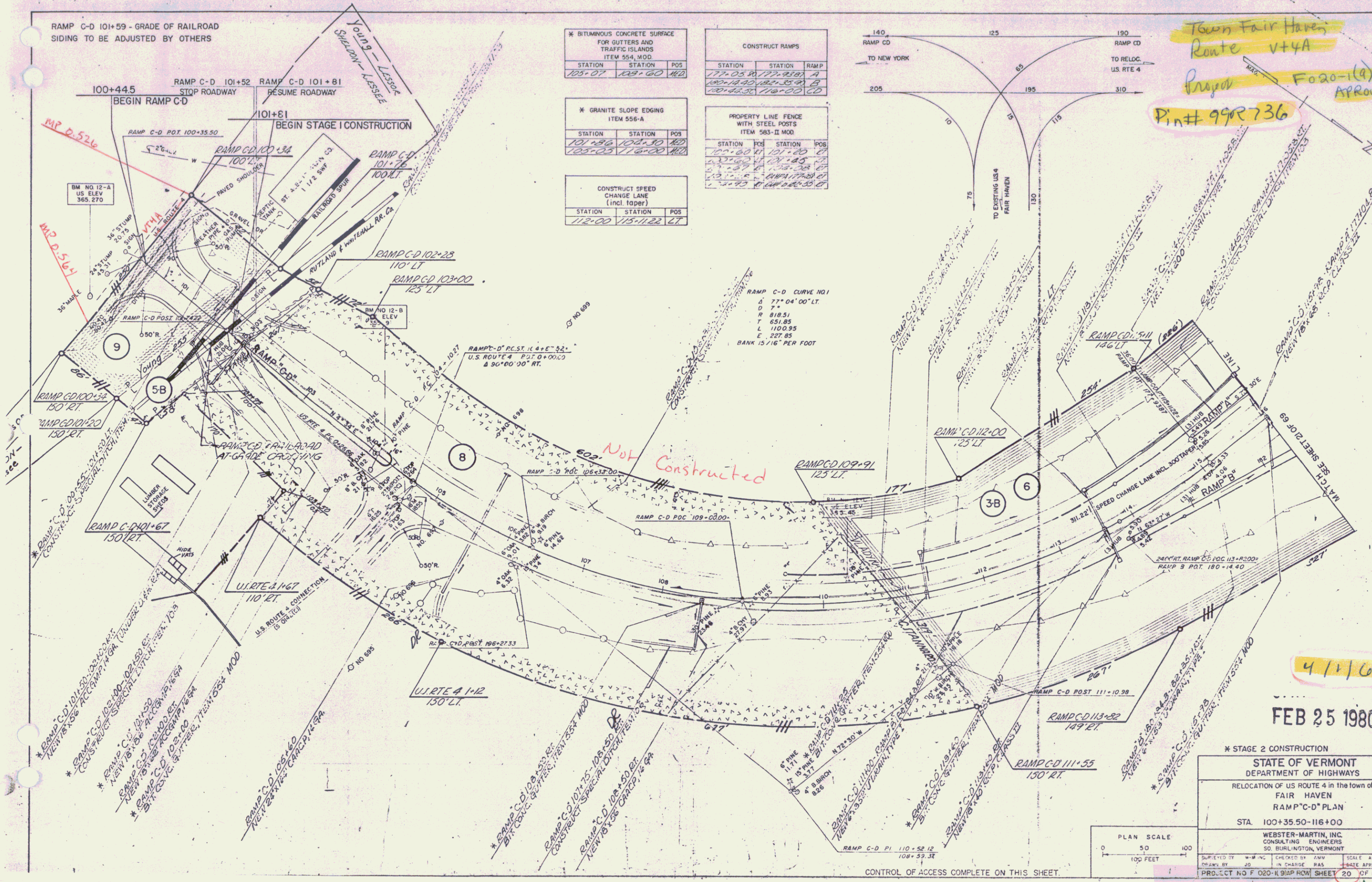


RAMP C-D 101+59 - GRADE OF RAILROAD SIDING TO BE ADJUSTED BY OTHERS



\* BITUMINOUS CONCRETE SURFACE FOR GUTTERS AND TRAFFIC ISLANDS ITEM 554, MOD.

STATION	STATION	POS
105+07	108+60	108

CONSTRUCT RAMPS

STATION	STATION	RAMP
177+05 R	177+93 R	A
100+14 R	102+35 R	B
102+45 R	116+00 R	C

\* GRANITE SLOPE EDGING ITEM 556-A

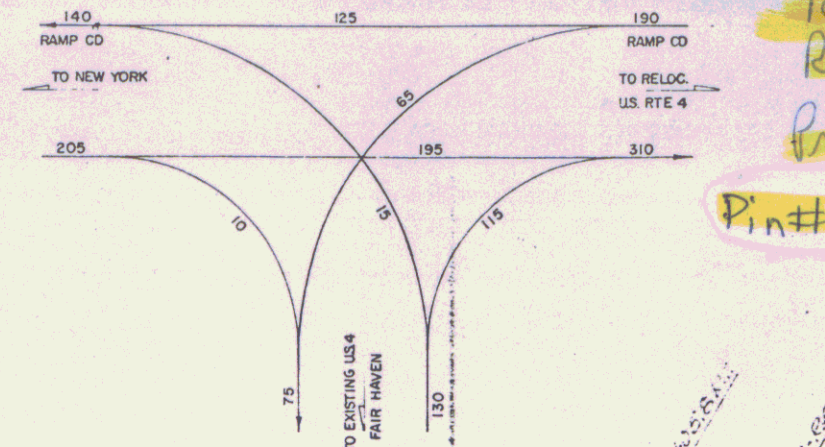
STATION	STATION	POS
101+58	102+50	102
103+03	116+00	116

PROPERTY LINE FENCE WITH STEEL POSTS ITEM 563-B MOD.

STATION	POS	STATION	POS
101+58	101+58	101+58	101+58
102+50	102+50	102+50	102+50
103+03	103+03	103+03	103+03
116+00	116+00	116+00	116+00

CONSTRUCT SPEED CHANGE LANE (INCL. TOPPS)

STATION	STATION	POS
112+00	115+112	112



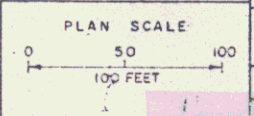
Town Fair Haven  
Route vt4A  
Project F020-1(4)  
AProw  
Pin# 99R736

NOT Constructed

4/1/67

FEB 25 1980

\* STAGE 2 CONSTRUCTION  
STATE OF VERMONT  
DEPARTMENT OF HIGHWAYS  
RELOCATION OF US ROUTE 4 in the town of  
FAIR HAVEN  
RAMP "C-D" PLAN  
STA. 100+35.50-116+00



WEBSTER-MARTIN, INC.  
CONSULTING ENGINEERS  
50 BURLINGTON, VERMONT  
SUPERVISED BY W.M. INC. CHECKED BY AMV. SCALE AS SHOWN  
DRAWN BY J.M. IN CHARGE. P.A.S. DATE APRIL 1979  
PROJECT NO. F 020-R 99R FROM SHEET 20 OF 69

CONTROL OF ACCESS COMPLETE ON THIS SHEET.