

Guard Rail Required
 On Right
 Sta 2+49 to Bridge 56'
 Bridge to 3+76 26'

On Left
 Sta. 2+52 to Bridge 64'
 Bridge to Sta 2+52 88'

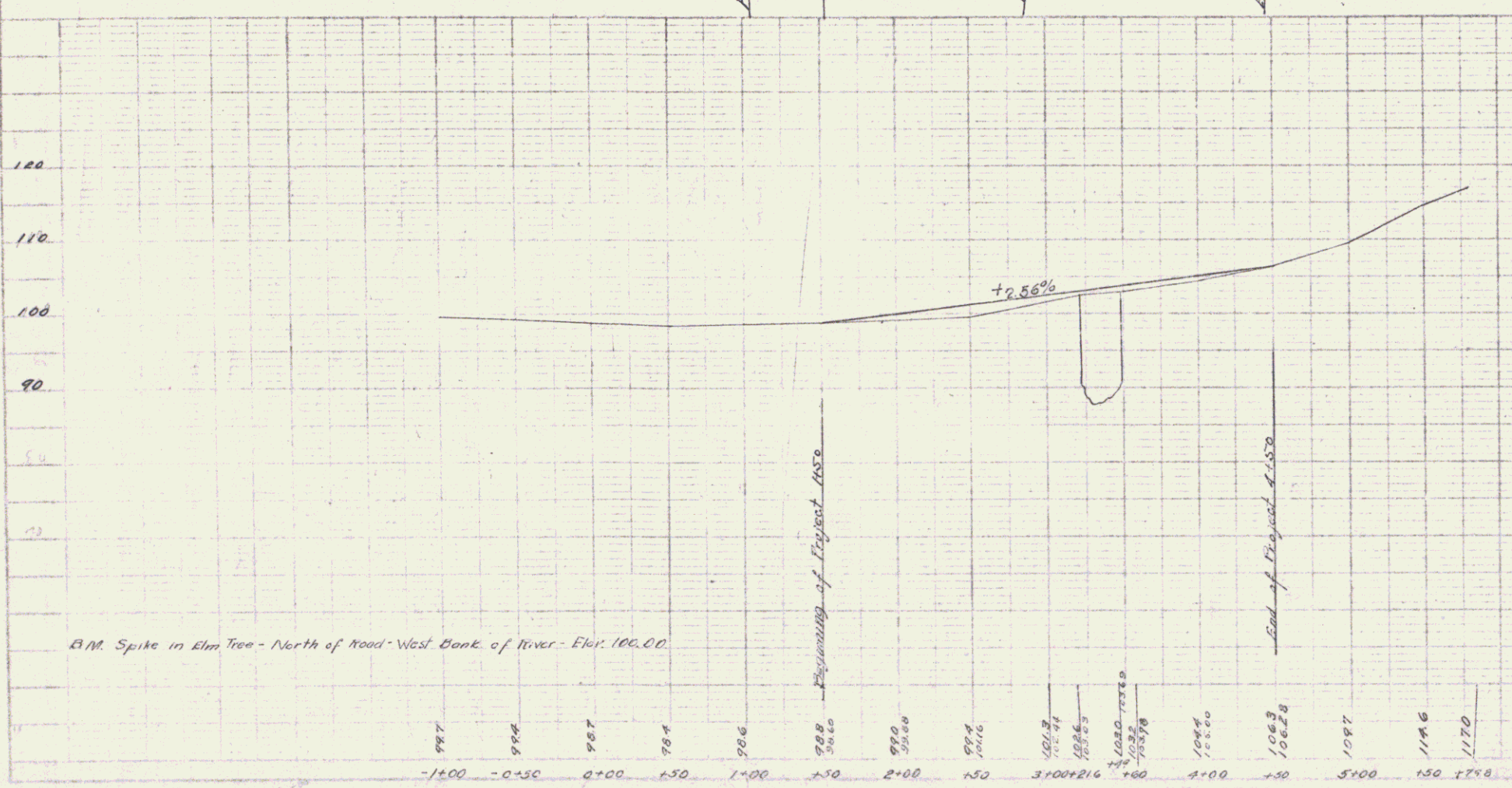
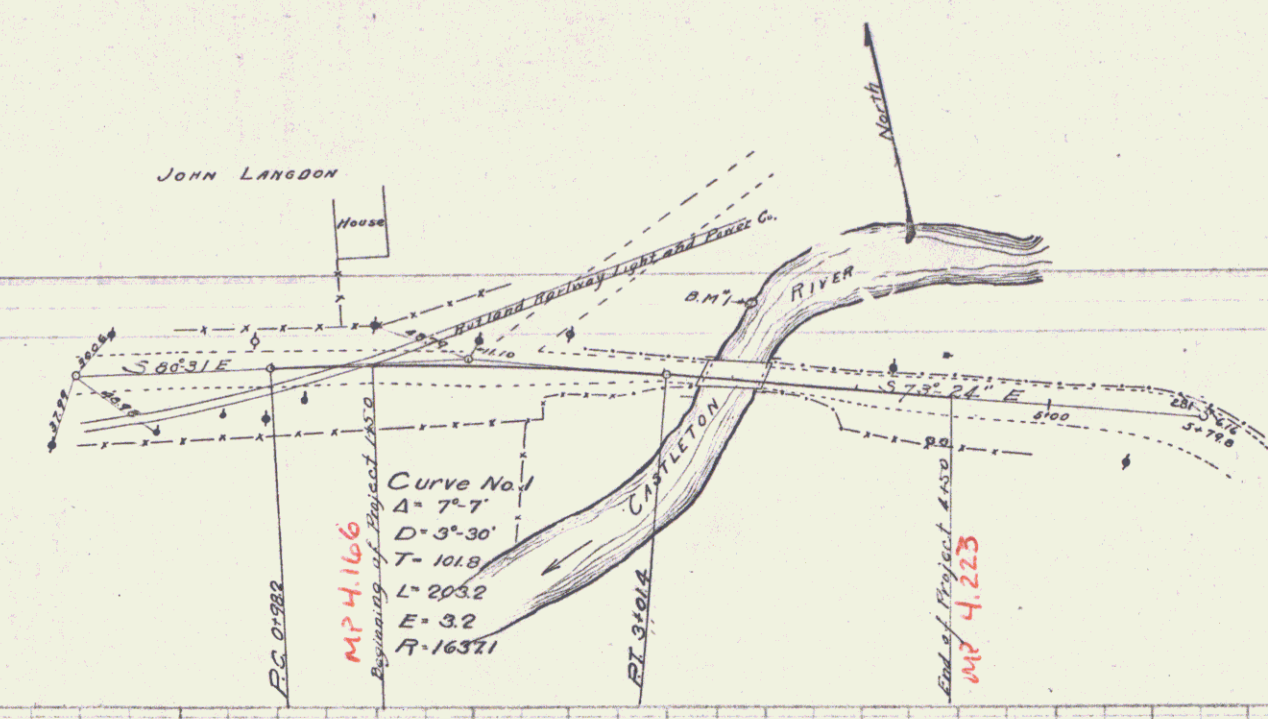
Total on sheet 232'

Br 8

FEED ROAD	STATE	FED. AID	FISCAL YEAR	SHEET NO.	TOTAL SHEETS
			1922	2	19

EMERSON
 ENGINEERING

EMERSON
 ENGINEERING



B.M. Spike in Elm Tree - North of Road - West Bank of River - Elev. 100.00

Bridge No. 2
 Laid by E. W. Watson 4/7/22
 Checked by H. R. Sullivan 4/19/22
 Examined by H. W. M.
 Date of Construction 4/19