

INDEX OF SHEETS

SHEET NO.	TITLE PAGE
1	TITLE PAGE
2	TYPICAL CROSS-SECTION OF IMPROVEMENT BITUMINOUS CONCRETE PAVEMENT, CLASS 1, ITEM 361-B
3	BANKING AND WIDENING TABLES
4	STANDARD STRUCTURE SHEET S 28 PIPE CULVERTS
5	" " " " S 29 REINFORCED CONCRETE BOX CULVERTS
6	" " " " SCW 2-3 INLETS AND OUTLETS FOR BOX CULVERTS
7	" " " " SC 2-4 STANDARD CULVERT SECTIONS

STANDARD STRUCTURE SHEET APPROVED BY THE CHIEF ENGINEER, VT. DEPARTMENT OF HIGHWAYS
3 28 APRIL 26, 1931

STATE OF VERMONT
STATE HIGHWAY DEPARTMENT

PLAN AND PROFILE OF PROPOSED
STATE HIGHWAY
FEDERAL PROJECT

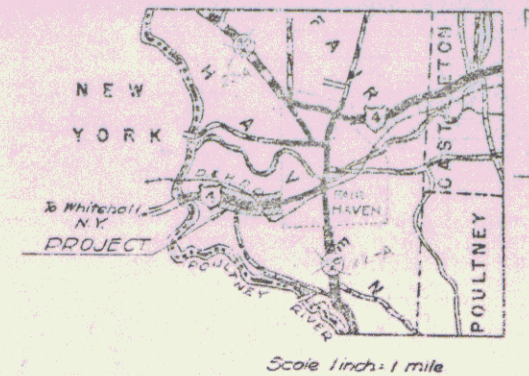
TOWN OF FAIR HAVEN

Route VT4A

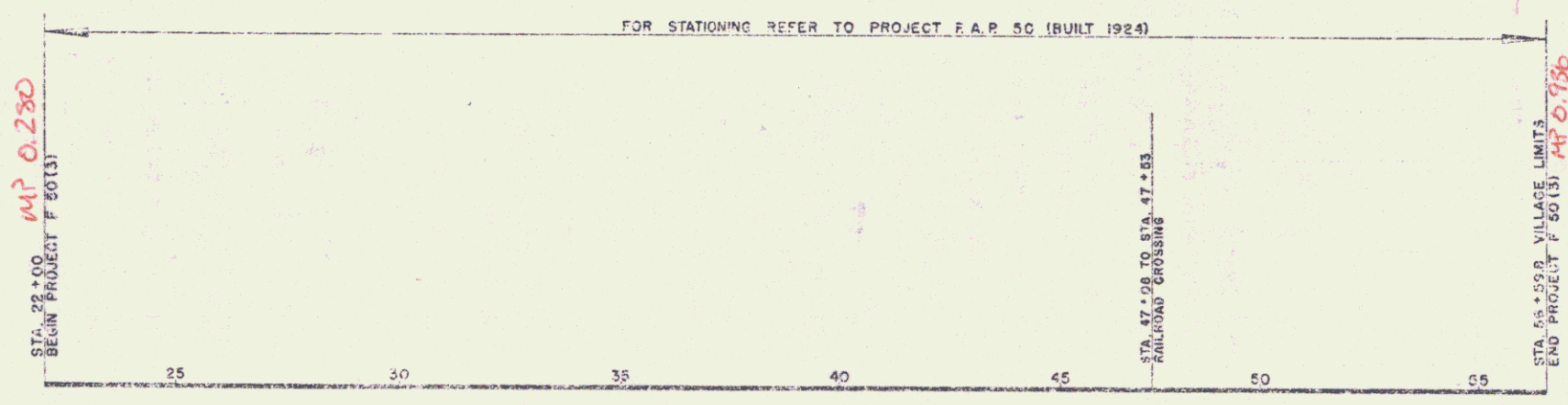
FAIR HAVEN — WHITEHALL N. Y. ROAD
BEGINNING AT A POINT ON ROUTE U. S. 4, 0.655 MILE WESTERLY OF THE FAIR HAVEN VILLAGE LIMITS AND EXTENDING EASTERLY 0.647 MILE EXCLUDING RAILROAD CROSSING.

LENGTH OF PROJECT 3414.8 FEET = 0.647 MILE

PER. NO.	DATE	BY	REVISION
1	20/29	20/29	7



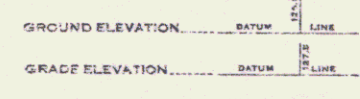
Pin# 99R732



Note: card on 6th floor and this was not built.

RIGHT-OF-WAY DIVISION
TOWN FILE
PERPETUAL
Town of VT 4A APPROVED 13 Aug 1947
(To Be Returned To R.O.W. Division)
SUBMITTED BY ORDER OF THE STATE HIGHWAY BOARD

- COUNTY LINE
- TOWN LINE
- FENCE LINE
- STONE WALL
- UNFENCED PROPERTY
- GUARD RAIL
- TRAVELED WAY
- RAILROAD
- RETAINING WALL
- CENTER LINE
- CURVEY LINE
- CULVERT
- DROP INLET
- TROLLEY POLE
- POWER POLE
- TELEPHONE POLE
- TREES
- MEADOW



CURVE DATA

DEFLECTION ANGLE	Δ
DEGREE OF CURVE	D
RADIUS OF CURVE	R
TANGENT DISTANCE	T
LENGTH OF CURVE	L
EXTERNAL DISTANCE	E
POINT OF INTERSECTION	P. I.
POINT OF CURVE	P. C.
POINT OF TANGENT	P. T.
POINT ON TANGENT	P. O. T.

SCALES

TITLE	1" = 200'
TYPICAL	1" = 2'
PLAN	1" = 100'
PROFILES	HORIZONTAL 1" = 100'
	VERTICAL 1" = 10'
CROSS SECTIONS	1" = 10'

THESE PLANS ARE SUBJECT TO SUCH REVISIONS AS MAY BE REQUIRED BY THE PUBLIC ROADS ADMINISTRATION OR THE COMMISSIONER OF HIGHWAYS.
CONSTRUCTION IS TO BE CARRIED ON IN ACCORDANCE WITH THE PLANS AND THE STANDARD ROAD AND BRIDGE SPECIFICATIONS OF 1936 AS APPROVED DECEMBER 28TH, 1936 BY THE PUBLIC WORKS ADMINISTRATION, INCLUDING ALL SUBSEQUENT APPROVED REVISIONS AND SUCH REVISED SPECIFICATIONS AND SPECIAL PROVISIONS AS ARE SUBMITTED WITH THE PLANS.

APPROVED [Signature] DISTRICT HIGHWAY ENGINEER
APPROVED [Signature] TOWN ENGINEER
SERIES # NO. 5063
SHEET 1 OF 7

STATE OF VERMONT

FAIR HAVEN PROJECT NO. F 50(3)

SUMMARY SHEET NO. 1 OF 1 19 47

DEPARTMENT OF HIGHWAYS

APPROXIMATE SUMMARY OF QUANTITIES				DETAILED SUMMARY OF QUANTITIES				TYPE OF CONSTRUCTION Bituminous Concrete Pavement, Class 1, Item 361-B			
QUANTITIES	UNIT	ITEMS	ITEM NO.	QUANTITIES	UNIT	ITEMS	ITEM NO.	STATIONS	PAVEMENT WIDTHS	EQUATIONS	REMARKS
								FROM TO	22' 24'	+ -	Transitions
700	cy	Common Excavation	10	630	cy	COMMON EXCAVATION		22+000.35 - 200	1300.0		
20	cy	Trench Excavation of Earth	12A	20	cy	Overrun		35+000.36 - 200	1000		2-2# 100
15	cy	Trench Excavation of Rock	12B	100	cy	Total		36+000.47 - 200	1100.0		
1400	cy	Sub-base of Gravel	19C	2	cy	TRENCH EXCAVATION OF EARTH		47+080.47 - 530			R.P. Crossing 45.0'
3300	gal	Hotmix Tar (Includes 240 gal overrun)	30	12	cy	Pipe Culvert					
170	cy	Premixed Bituminous Gravel Shoulder Course with aggregate tar	36B	6	cy	Box Culverts		47+530.50 - 598	9068		
15	cy	Concrete Class A	41A	20	cy	Overrun					
1450	lb	Reinforcing Steel	42	131	lb	Total					
2	cy	Cement Rubble Masonry	43	9	cy	TRENCH EXCAVATION OF ROCK					
12	lf	12" Reinforced Concrete Pipe	49B	9	cy	Pipe Culvert					
7000	sq	Cleaning Existing Pavement	120	9	cy	Box Culverts					
6300	lf	Preparing Transverse Joints	121	9	cy	Overrun					
8500	sq	Bituminous Concrete Pavement	361B	18	cy	Total					
				89	cy	Overrun					
				1400	cy	Total					
				124	cy	PREMIXED BITUMINOUS GRAVEL SHOULDER COURSE					
				11	cy	Overrun					
				170	cy	Total					
				131	cy	CONCRETE CLASS A					
				19	cy	Overrun					
				120	cy	Total					
				1313	lb	REINFORCING STEEL					
				137	lb	Overrun					
				1450	lb	Total					
				15	cy	CEMENT RUBBLE MASONRY					
				05	cy	Overrun					
				20	cy	Total					
				6374	sq	CLEANING EXISTING PAVEMENT					
				126	sq	Overrun					
				7000	sq	Total					
				6233	lf	PREPARING TRANSVERSE JOINTS					
				67	lf	Overrun					
				6300	lf	Total					
				8392	sq	BITUMINOUS CONCRETE PAVEMENT					
				108	sq	Overrun					
				8500	sq	Total					

TOTALS 3314.8 100.0

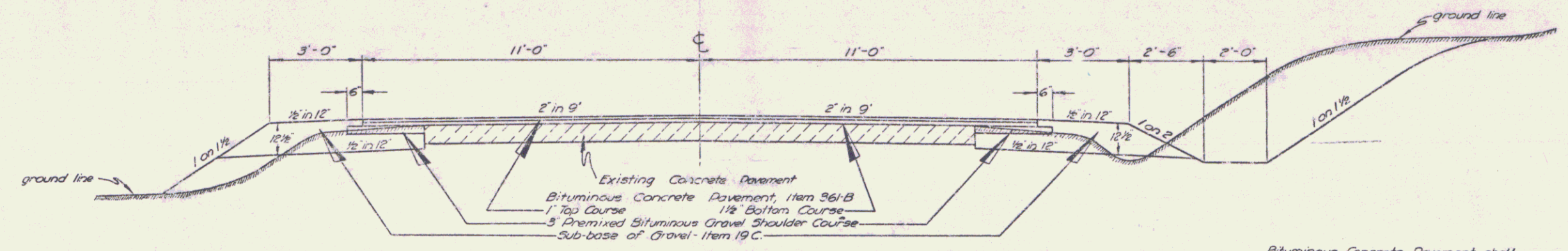
DRAINAGE STRUCTURES													
STA	POS	OLD CULV	TYPE	IN	OUT	RCD	D	E	DE BOX	CONC	REINFC	TRENCH EX	REMARKS
27+18	E	24" RCD	W/P	15"	12"	2'-2"	10.5	6.8	63R	2	3	3	Retain & Extend 5.5' to 4' 5" DI
43+74	E	18" RCD	SH	15"	12"	2'-2"	10.5	6.3	27S	1.5	2	3	Retain & Extend 8' 11" to 4' 11"
54+50	E	24" RCD	W/P	15"	12"	2'-2"	10.5	6.3	27S	2	3	3	Retain & Extend 5.5' to 5' DI 1/2" to Top on DI
TOTALS				15"	12"	2'-2"	210	131	1313	1.5	14	12	

LENGTH OF PROJECT			
STATIONS	FEET	MILES	REMARKS
22+000.36 - 598	3214.8	0.647	
TOTALS	3214.8	0.647	

SERIES NO. 50(3) FILED
SHEET 1A OF 1 SHEETS

DATE: 10/11/57
 PROJECT: ROAD
 SHEET: 2 OF 7

TYPICAL SECTION
BITUMINOUS CONCRETE PAVEMENT (CLASS I)
ITEM 361-B



SECTION SHOWING PREMIXED BITUMINOUS SHOULDERS

Bituminous Concrete Pavement shall be paid for on a sq. yd. basis.

SCALE 1 INCH = 2 FEET
 FAIR HAVEN F 50(13)

Surveyed by
 Designed by H. Marshall
 Drawn by E. Rogers
 Traced by E. Rogers
 Checked by
 Reviser No. 50(13) Filed
 Sheet 2 of 7