

STATE OF NEW YORK
DEPARTMENT OF PUBLIC WORKS
DIVISION OF CONSTRUCTION

**PLANS FOR RECONSTRUCTING WITH FEDERAL AID A PORTION OF THE
WHITEHALL - FAIR HAVEN
STATE HIGHWAY No. 1542**

Between Station 336+10 and Station 341+78.16 at the west end of the bridge over the Poultney river; a length of 0.11 mile in the Town of Hampton

WASHINGTON COUNTY

AND FOR CONSTRUCTING WITH FEDERAL AID THE BRIDGE OVER THE
POULTNEY RIVER

From Station 341+78.16 to Station 342+91.84; a length of 0.01 mile in the Town of Hampton, Washington County, State of New York and 0.01 mile in the Town of Fair Haven, Rutland County, in the State of Vermont, a total length of 0.02 mile

AND THE APPROACH THERETO IN THE STATE OF VERMONT

From Station 342+91.84 to Station 364+50; a length of 0.41 mile in the Town of Fair Haven, Rutland County, in the State of Vermont

LENGTH IN NEW YORK STATE 0.12 MILE FARC 49-6 LENGTH IN VERMONT 0.42 MILE FA-VT. 49-1
15 SHEETS A TOTAL LENGTH OF 0.54 MILE PROJECT F10B3(1)

WASHINGTON COUNTY, N.Y. and RUTLAND COUNTY, VT.
CHAPTER 650, LAWS OF 1944

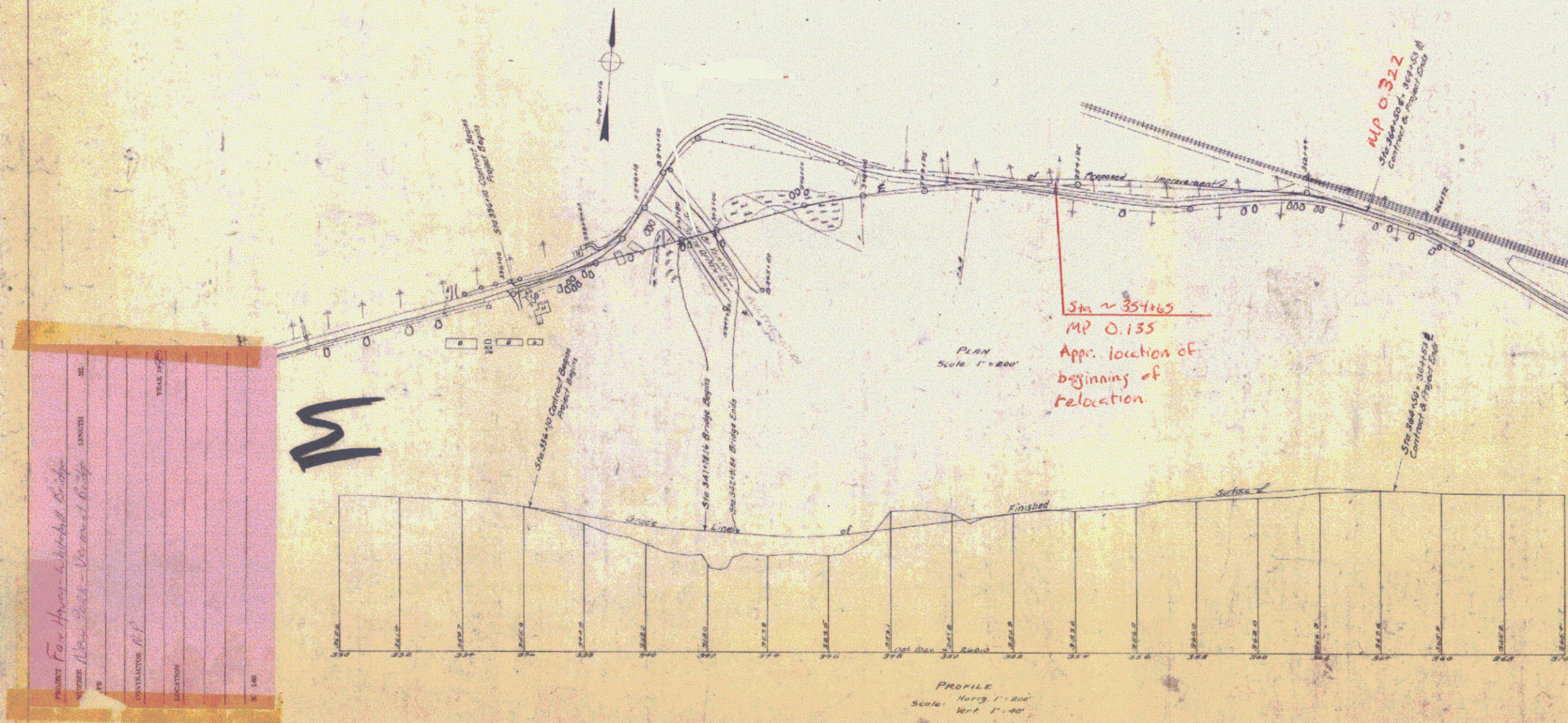
FED. ROAD Div. No.	STATE	FED. AID PROJ. NO.	FISCAL YEAR	SHEET NO.	TOTAL SHEETS
1	NY	F-10B3(1)		1	16

WHITEHALL - FAIR HAVEN (POLTNEY) BRIDGE
CHAPTER 650 LAWS 1944

TYPE OF CONSTRUCTION
REINFORCED CONCRETE DECK
Reinforced Concrete Pavement 0.13 Mile
Bridge-Welded Steel and Concrete (Alpha), Deck Type,
Span 110' C. to C. Bearings

STANDARD STRUCTURE SHEETS
40-1, 46-4, 46-7, 46-11, 46-14R, 46-15, 46-16, 46-20R,
47-2, 47-2C, 47-12, 47-34, 47-37, 48-3R, 48-6, 48-39

All work contemplated under this contract to be covered by and in conformity with the specifications adopted January 2, 1947, except as modified on these plans and in the Itemized Proposal.



PROJECT	Whitehall - Fair Haven Bridge
OWNER	New York - Vermont Bridge
DESIGNER	W. J. ...
CONTRACTOR	...
DATE	...

Approved: Jan 12 1948
J. B. McMoran
Chief Engineer

Approved: Oct 15 1948
E. T. Sawkins
District Engineer

Approved: Oct 28 1948
H. E. Sargent
Commissioner of Highways
State of Vermont

Project F 10B3(1)
Pin # 99R730
Route VT4A
Date 10/28/1948

RECOMMENDED FOR APPROVAL DATE

DISTRICT ENGINEER PUBLIC ROADS ADMINISTRATION FEDERAL WORKS AGENCY	DATE
DIVISION ENGINEER PUBLIC ROADS ADMINISTRATION FEDERAL WORKS AGENCY	DATE

NOTE:
ALL REFERENCES TO STATIONS IN TABLES AND LOCATION OF STRUCTURES ARE CENTER LINE STATIONS UNLESS OTHERWISE STATED.

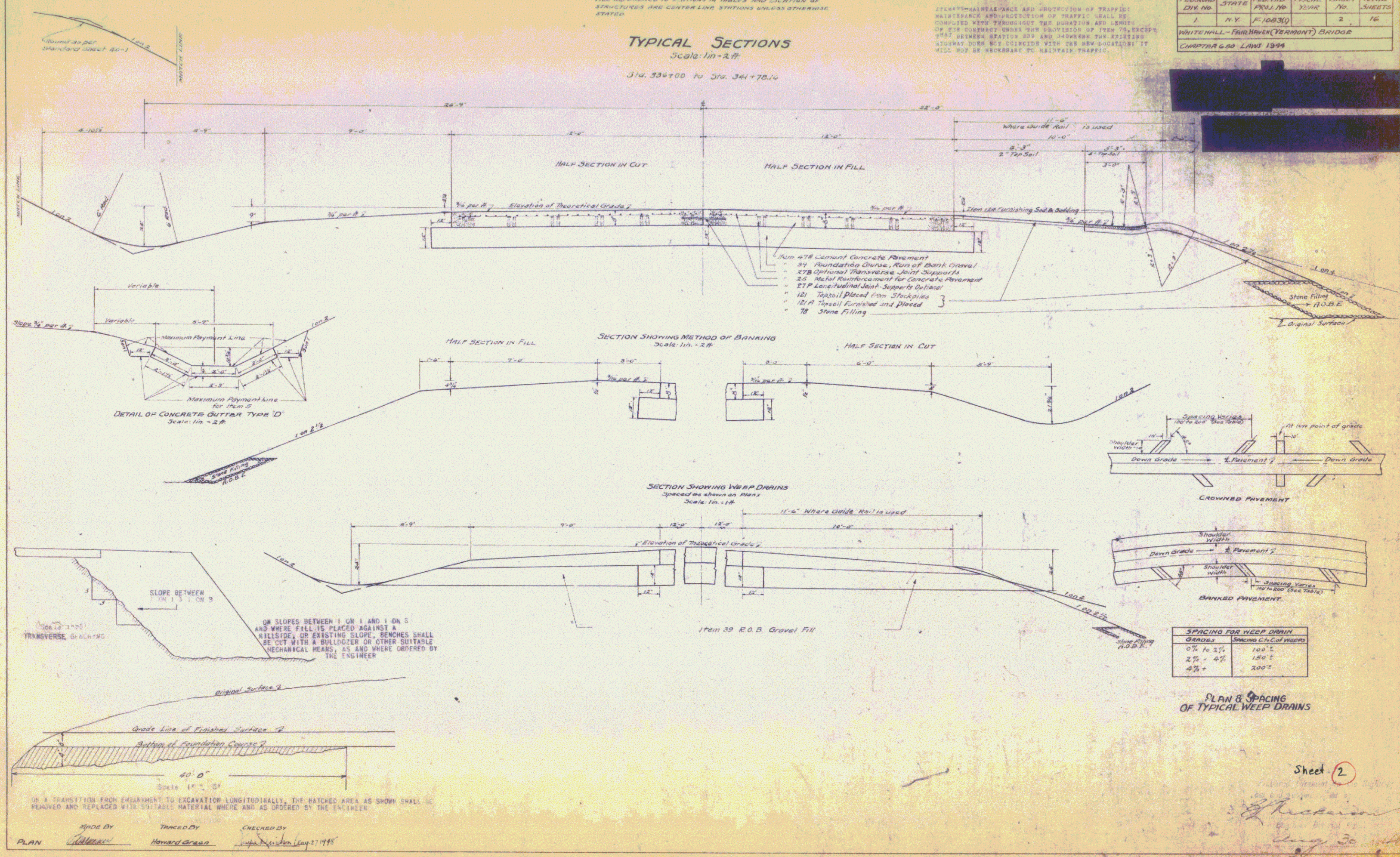
ITEMS—MAINTENANCE AND PROTECTION OF TRAFFIC MAINTENANCE AND PROTECTION OF TRAFFIC SHALL BE COMPLETED THROUGHOUT THE DURATION AND LENGTH OF THE CONTRACT UNDER THE SUPERVISION OF THE ENGINEER. THAT BETWEEN STATION 339 AND 340 WHERE THE EXISTING HIGHWAY DOES NOT COINCIDE WITH THE NEW LOCATION IT WILL NOT BE NECESSARY TO MAINTAIN TRAFFIC.

PROJ. AND DIST. NO.	STATE	FED. AID PROJ. NO.	FISCAL YEAR	SHEET NO.	TOTAL SHEETS
1	N.Y.	F.1083(1)		2	16

WHITEHALL-FARMHAY (VERMONT) BRIDGE
CHAPTER 600 LAWS 1944

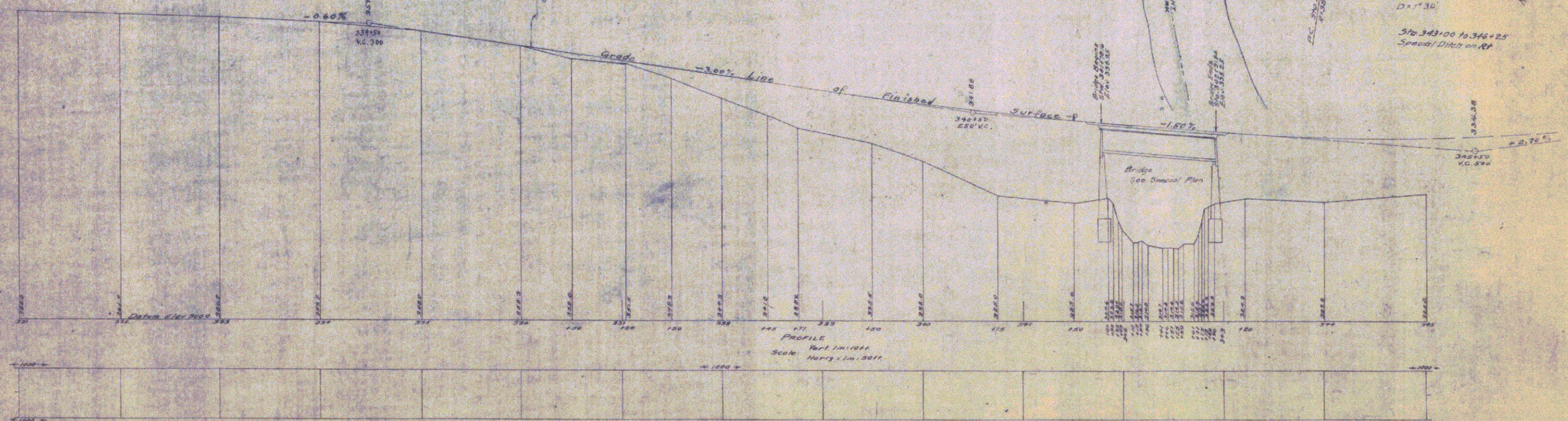
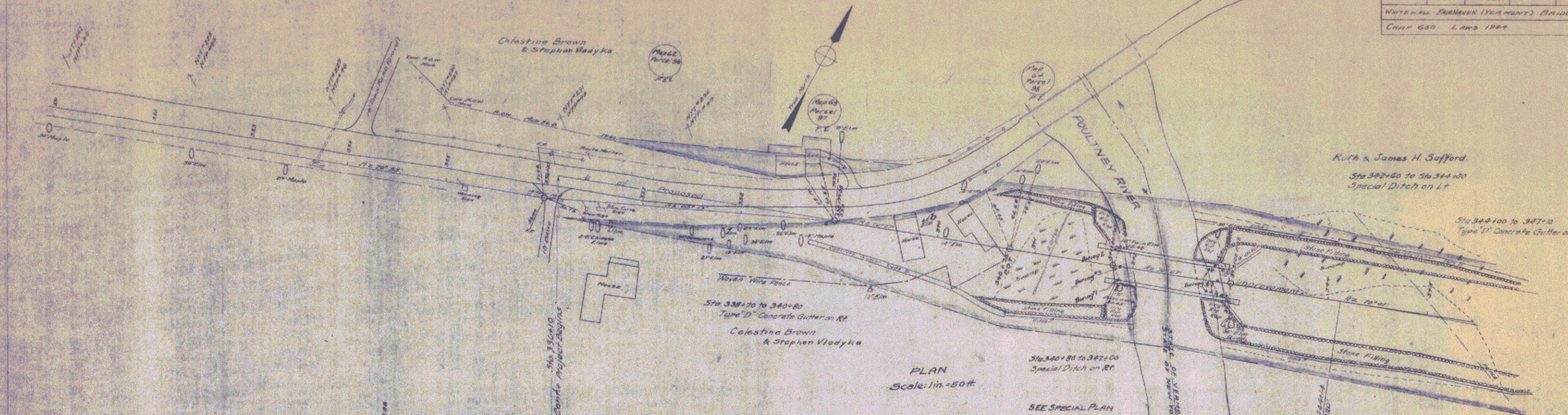
TYPICAL SECTIONS
Scale: 1 in = 2 ft.

Sta. 336+00 to Sta. 341+70.16



FED. ROAD DIST. NO.	STATE	FED. AID PROJ. NO.	FISCAL YEAR	SHEET NO.	TOTAL SHEETS
1	N.Y.	F-100310		14	15

WATERWAY PERMANENT (WATERWAY) BRIDGE
CHAP. 630 LAWS 1944



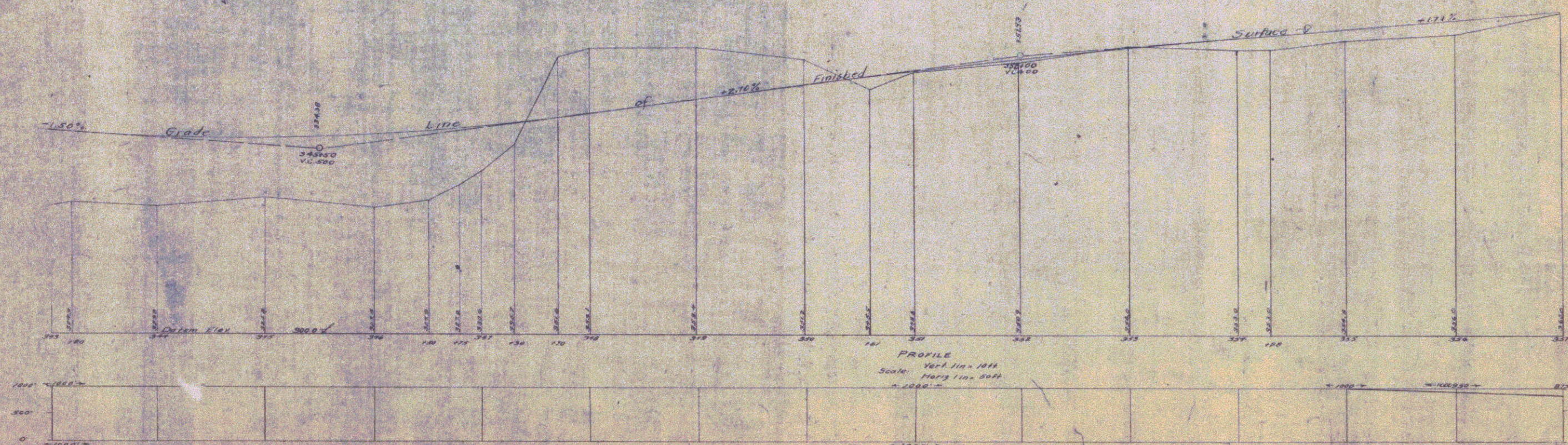
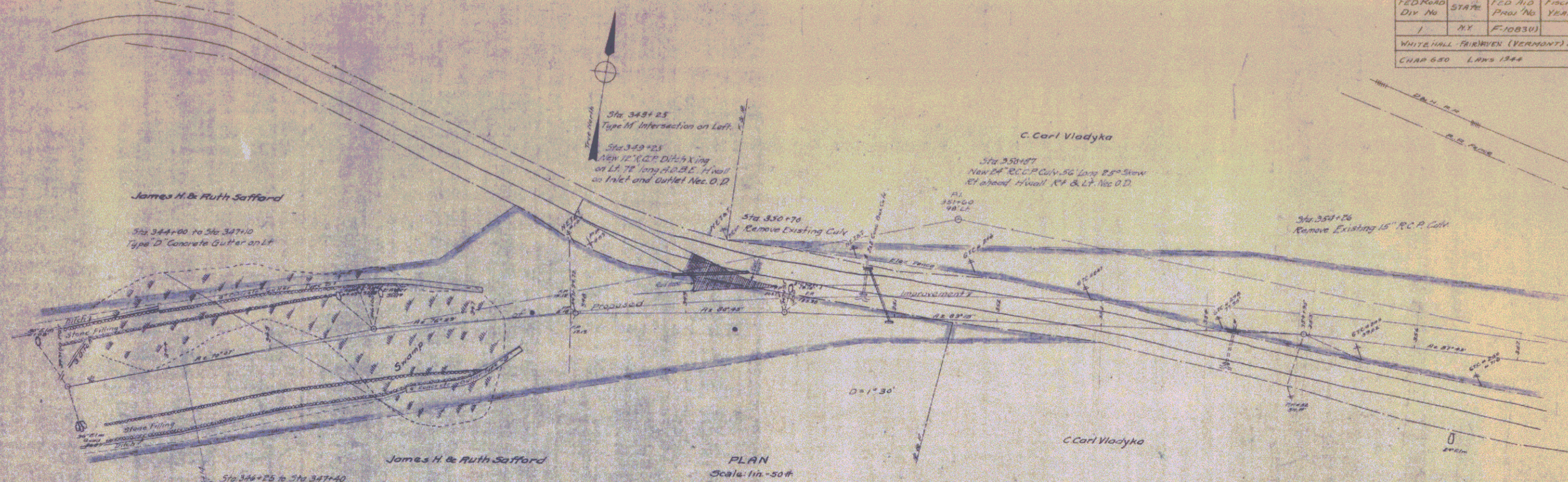
EXPLANATION - MINIMUM SIGHT DISTANCE GRAPH -
 THE MINIMUM SIGHT DISTANCE FROM 6 TO 100' ON THE VERTICAL CURVES AND PROFILE TANGENTS IS SHOWN NUMERICALLY ABOVE THE UPPER LINE OF THE GRAPH AND BY THE PLOTTED DASH LINE. THE MINIMUM SIGHT DISTANCE ON HORIZONTAL CURVES AND TANGENTS IS SHOWN NUMERICALLY BELOW THE LOWER LINE OF THE GRAPH AND BY THE PLOTTED FULL LINE. VERTICAL CURVE SIGHT DISTANCES AND HORIZONTAL OR ALIGNMENT SIGHT DISTANCES ARE COMPUTED, SIZED AND PLOTTED EACH INDEPENDENT OF THE OTHER. THE GRAPH AT ONE POINT SHOWS WHETHER PROFILE OR ALIGNMENT IS RESPONSIBLE FOR THE MINIMUM SIGHT DISTANCE SHOWN FOR ANY PARTICULAR STATION. THE ARROWS INDICATE THE DIRECTION OF THE OBSERVER'S LINE OF SIGHT CORRESPONDING TO THE MINIMUM SIGHT DISTANCE SHOWN AT ANY PARTICULAR POINT. THE HEIGHTS OF THE OBSERVER'S EYE AND OF THE OBJECT OBSERVED ARE ASSUMED AT 5 FEET ABOVE GROUND.

MADE BY: [Signature]
 CHECKED BY: [Signature]
 PLAN: [Signature]
 PROFILE: [Signature]

Sheet 14
 [Signature]
 Aug 30 1944

FED. ROAD DIV. No.	STATE	FED. AID PROJ. No.	FISCAL YEAR	SHEET No.	TOTAL SHEETS
1	VT	F-10830		15	16

WHITE HALL FIREWEX (VERMONT) BRIDGE
CHAP. 630 LAWS 1944



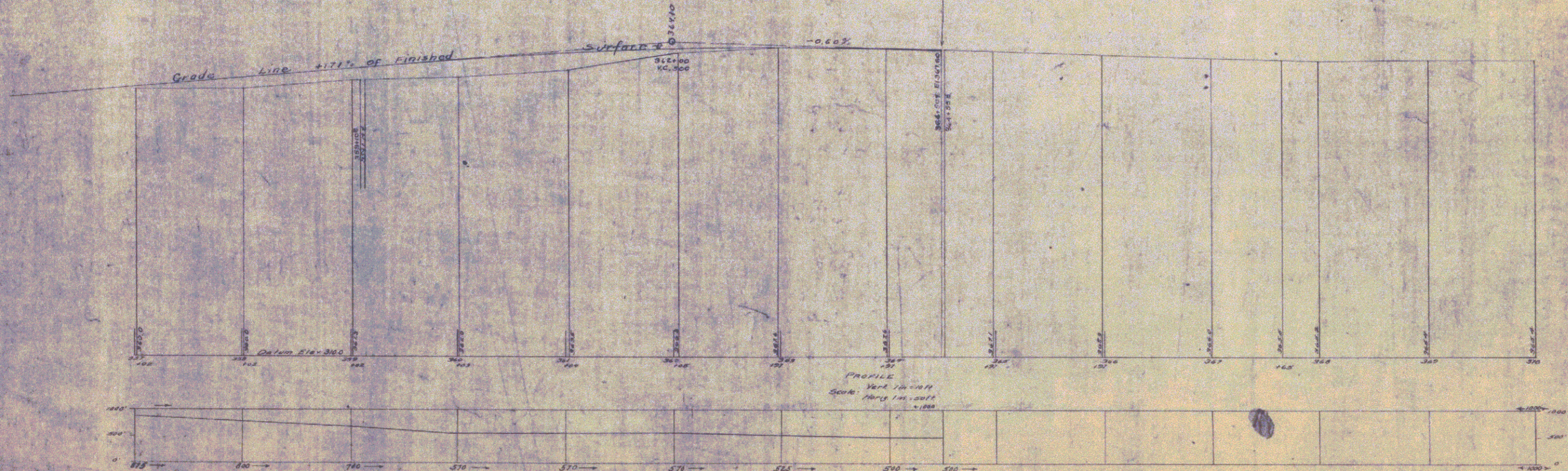
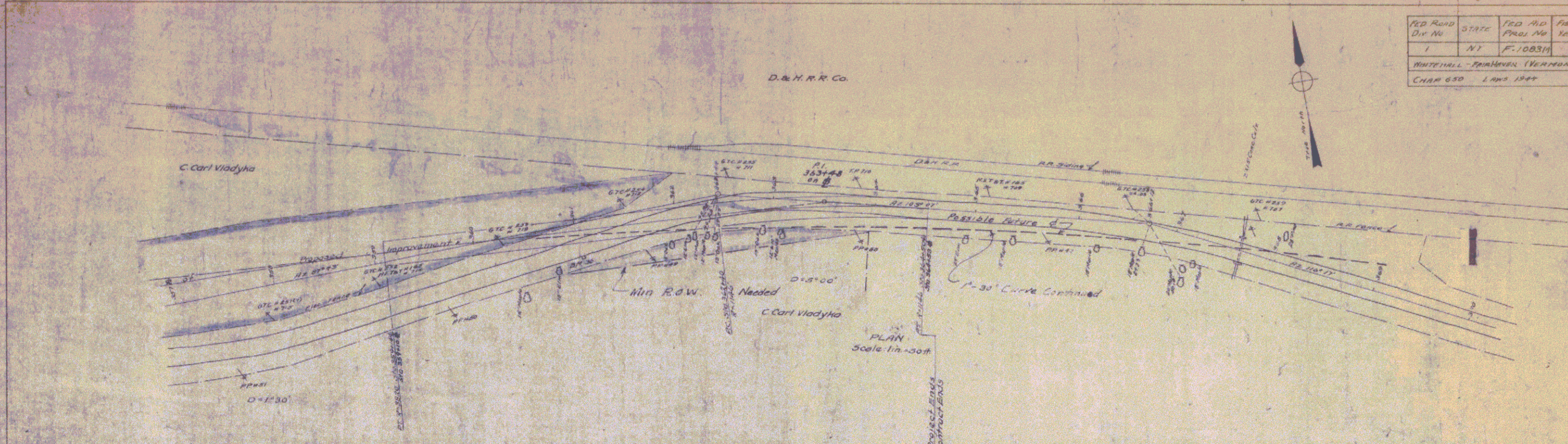
Made By: *[Signature]*
 Traced By: *[Signature]*
 Checked By: *[Signature]*
 Date: *[Date]*

Minimum Sight Distance Book
For Explanation See Sheet No. 13

Sheet 15
[Signature]
 Aug 30, 48

RD. NO.	STATE	FED. AID PROJ. NO.	FISCAL YEAR	SHEET NO.	TOTAL SHEETS
1	VT	F-1083H		16	16

WATERVILLE - FARMINGTON (VERMONT) BRIDGE
 CHAP. 630 LAWS 1944



MINIMUM CLEARANCE GRAPH
 For Explanation See Sheet No. 13

Drawn by: Traces D. Checked by: [Signature]
 [Additional text and signatures]

Sheet 16
 [Signature]
 Aug 30 1944
 5