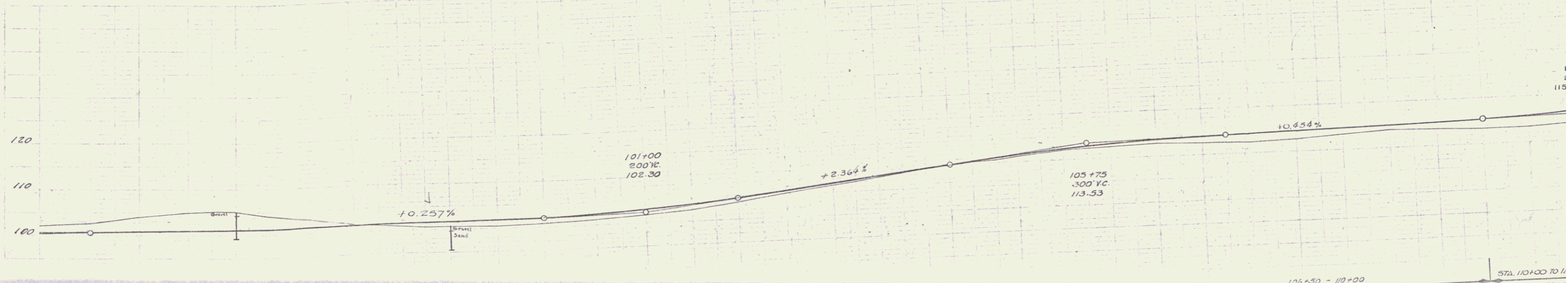
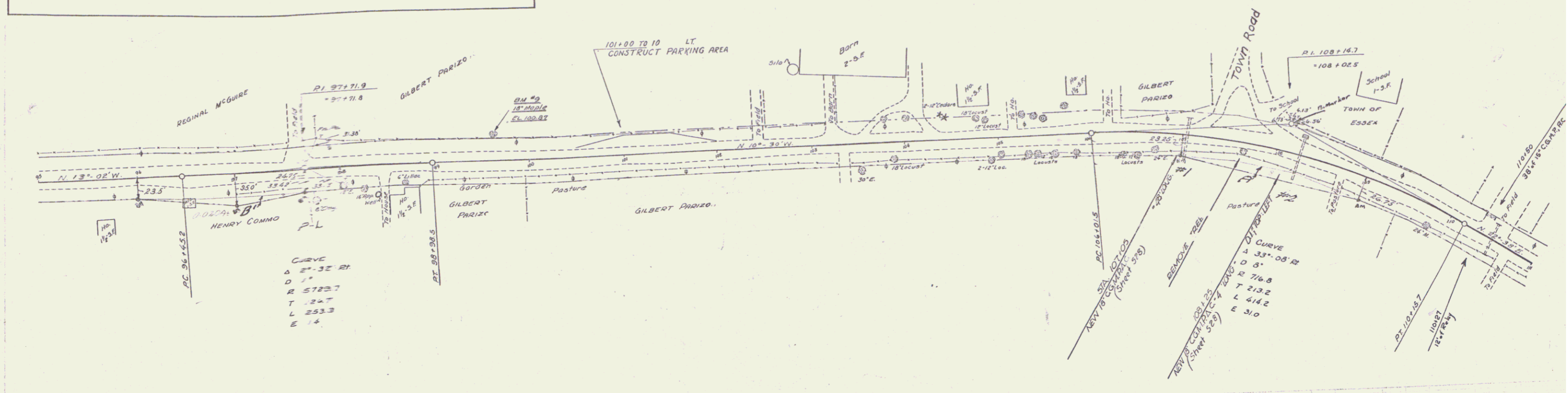


| Pincer | Kind of Instrument | Date of Instrument | Grantor | Grantee | Record | Remarks |
|--------|--------------------|--------------------|----------------|-----------|--------|-------------------------------------|
| B1 | CC&D | 10-21-35 | Henry Commo | St. J. W. | 41 35 | 10-24-35 |
| A4 | W.D. | 10-21-35 | Gilbert Parizo | " | 41 40 | 10-25-35 Cmt. Sta. 107+00 to 110+00 |

W.P.S.S. 165D 1936 5 16
 N.P.S. 7933 4 30
 (1936)



| Station | Elevation | Station | Elevation | Station | Elevation |
|---------|-----------|---------|-----------|---------|-----------|
| 100.69 | 100.92 | 101.5 | 101.5 | 102.5 | 102.5 |
| 100.92 | 101.01 | 101.6 | 101.6 | 102.6 | 102.6 |
| 101.01 | 101.14 | 101.7 | 101.7 | 102.7 | 102.7 |
| 101.14 | 101.22 | 101.8 | 101.8 | 102.8 | 102.8 |
| 101.22 | 101.31 | 101.9 | 101.9 | 102.9 | 102.9 |
| 101.31 | 101.41 | 102.0 | 102.0 | 103.0 | 103.0 |
| 101.41 | 101.51 | 102.1 | 102.1 | 103.1 | 103.1 |
| 101.51 | 101.61 | 102.2 | 102.2 | 103.2 | 103.2 |
| 101.61 | 101.72 | 102.3 | 102.3 | 103.3 | 103.3 |
| 101.72 | 101.83 | 102.4 | 102.4 | 103.4 | 103.4 |
| 101.83 | 101.94 | 102.5 | 102.5 | 103.5 | 103.5 |
| 101.94 | 102.05 | 102.6 | 102.6 | 103.6 | 103.6 |
| 102.05 | 102.16 | 102.7 | 102.7 | 103.7 | 103.7 |
| 102.16 | 102.27 | 102.8 | 102.8 | 103.8 | 103.8 |
| 102.27 | 102.38 | 102.9 | 102.9 | 103.9 | 103.9 |
| 102.38 | 102.49 | 103.0 | 103.0 | 104.0 | 104.0 |
| 102.49 | 102.60 | 103.1 | 103.1 | 104.1 | 104.1 |
| 102.60 | 102.71 | 103.2 | 103.2 | 104.2 | 104.2 |
| 102.71 | 102.82 | 103.3 | 103.3 | 104.3 | 104.3 |
| 102.82 | 102.93 | 103.4 | 103.4 | 104.4 | 104.4 |
| 102.93 | 103.04 | 103.5 | 103.5 | 104.5 | 104.5 |
| 103.04 | 103.15 | 103.6 | 103.6 | 104.6 | 104.6 |
| 103.15 | 103.26 | 103.7 | 103.7 | 104.7 | 104.7 |
| 103.26 | 103.37 | 103.8 | 103.8 | 104.8 | 104.8 |
| 103.37 | 103.48 | 103.9 | 103.9 | 104.9 | 104.9 |
| 103.48 | 103.59 | 104.0 | 104.0 | 105.0 | 105.0 |
| 103.59 | 103.70 | 104.1 | 104.1 | 105.1 | 105.1 |
| 103.70 | 103.81 | 104.2 | 104.2 | 105.2 | 105.2 |
| 103.81 | 103.92 | 104.3 | 104.3 | 105.3 | 105.3 |
| 103.92 | 104.03 | 104.4 | 104.4 | 105.4 | 105.4 |
| 104.03 | 104.14 | 104.5 | 104.5 | 105.5 | 105.5 |
| 104.14 | 104.25 | 104.6 | 104.6 | 105.6 | 105.6 |
| 104.25 | 104.36 | 104.7 | 104.7 | 105.7 | 105.7 |
| 104.36 | 104.47 | 104.8 | 104.8 | 105.8 | 105.8 |
| 104.47 | 104.58 | 104.9 | 104.9 | 105.9 | 105.9 |
| 104.58 | 104.69 | 105.0 | 105.0 | 106.0 | 106.0 |
| 104.69 | 104.80 | 105.1 | 105.1 | 106.1 | 106.1 |
| 104.80 | 104.91 | 105.2 | 105.2 | 106.2 | 106.2 |
| 104.91 | 105.02 | 105.3 | 105.3 | 106.3 | 106.3 |
| 105.02 | 105.13 | 105.4 | 105.4 | 106.4 | 106.4 |
| 105.13 | 105.24 | 105.5 | 105.5 | 106.5 | 106.5 |
| 105.24 | 105.35 | 105.6 | 105.6 | 106.6 | 106.6 |
| 105.35 | 105.46 | 105.7 | 105.7 | 106.7 | 106.7 |
| 105.46 | 105.57 | 105.8 | 105.8 | 106.8 | 106.8 |
| 105.57 | 105.68 | 105.9 | 105.9 | 106.9 | 106.9 |
| 105.68 | 105.79 | 106.0 | 106.0 | 107.0 | 107.0 |
| 105.79 | 105.90 | 106.1 | 106.1 | 107.1 | 107.1 |
| 105.90 | 106.01 | 106.2 | 106.2 | 107.2 | 107.2 |
| 106.01 | 106.12 | 106.3 | 106.3 | 107.3 | 107.3 |
| 106.12 | 106.23 | 106.4 | 106.4 | 107.4 | 107.4 |
| 106.23 | 106.34 | 106.5 | 106.5 | 107.5 | 107.5 |
| 106.34 | 106.45 | 106.6 | 106.6 | 107.6 | 107.6 |
| 106.45 | 106.56 | 106.7 | 106.7 | 107.7 | 107.7 |
| 106.56 | 106.67 | 106.8 | 106.8 | 107.8 | 107.8 |
| 106.67 | 106.78 | 106.9 | 106.9 | 107.9 | 107.9 |
| 106.78 | 106.89 | 107.0 | 107.0 | 108.0 | 108.0 |
| 106.89 | 107.00 | 107.1 | 107.1 | 108.1 | 108.1 |
| 107.00 | 107.11 | 107.2 | 107.2 | 108.2 | 108.2 |
| 107.11 | 107.22 | 107.3 | 107.3 | 108.3 | 108.3 |
| 107.22 | 107.33 | 107.4 | 107.4 | 108.4 | 108.4 |
| 107.33 | 107.44 | 107.5 | 107.5 | 108.5 | 108.5 |
| 107.44 | 107.55 | 107.6 | 107.6 | 108.6 | 108.6 |
| 107.55 | 107.66 | 107.7 | 107.7 | 108.7 | 108.7 |
| 107.66 | 107.77 | 107.8 | 107.8 | 108.8 | 108.8 |
| 107.77 | 107.88 | 107.9 | 107.9 | 108.9 | 108.9 |
| 107.88 | 107.99 | 108.0 | 108.0 | 109.0 | 109.0 |
| 107.99 | 108.10 | 108.1 | 108.1 | 109.1 | 109.1 |
| 108.10 | 108.21 | 108.2 | 108.2 | 109.2 | 109.2 |
| 108.21 | 108.32 | 108.3 | 108.3 | 109.3 | 109.3 |
| 108.32 | 108.43 | 108.4 | 108.4 | 109.4 | 109.4 |
| 108.43 | 108.54 | 108.5 | 108.5 | 109.5 | 109.5 |
| 108.54 | 108.65 | 108.6 | 108.6 | 109.6 | 109.6 |
| 108.65 | 108.76 | 108.7 | 108.7 | 109.7 | 109.7 |
| 108.76 | 108.87 | 108.8 | 108.8 | 109.8 | 109.8 |
| 108.87 | 108.98 | 108.9 | 108.9 | 109.9 | 109.9 |
| 108.98 | 109.09 | 109.0 | 109.0 | 110.0 | 110.0 |
| 109.09 | 109.20 | 109.1 | 109.1 | 110.1 | 110.1 |
| 109.20 | 109.31 | 109.2 | 109.2 | 110.2 | 110.2 |
| 109.31 | 109.42 | 109.3 | 109.3 | 110.3 | 110.3 |
| 109.42 | 109.53 | 109.4 | 109.4 | 110.4 | 110.4 |
| 109.53 | 109.64 | 109.5 | 109.5 | 110.5 | 110.5 |
| 109.64 | 109.75 | 109.6 | 109.6 | 110.6 | 110.6 |
| 109.75 | 109.86 | 109.7 | 109.7 | 110.7 | 110.7 |
| 109.86 | 109.97 | 109.8 | 109.8 | 110.8 | 110.8 |
| 109.97 | 110.08 | 109.9 | 109.9 | 110.9 | 110.9 |
| 110.08 | 110.19 | 110.0 | 110.0 | 111.0 | 111.0 |
| 110.19 | 110.30 | 110.1 | 110.1 | 111.1 | 111.1 |
| 110.30 | 110.41 | 110.2 | 110.2 | 111.2 | 111.2 |
| 110.41 | 110.52 | 110.3 | 110.3 | 111.3 | 111.3 |
| 110.52 | 110.63 | 110.4 | 110.4 | 111.4 | 111.4 |
| 110.63 | 110.74 | 110.5 | 110.5 | 111.5 | 111.5 |
| 110.74 | 110.85 | 110.6 | 110.6 | 111.6 | 111.6 |
| 110.85 | 110.96 | 110.7 | 110.7 | 111.7 | 111.7 |
| 110.96 | 111.07 | 110.8 | 110.8 | 111.8 | 111.8 |
| 111.07 | 111.18 | 110.9 | 110.9 | 111.9 | 111.9 |
| 111.18 | 111.29 | 111.0 | 111.0 | 112.0 | 112.0 |
| 111.29 | 111.40 | 111.1 | 111.1 | 112.1 | 112.1 |
| 111.40 | 111.51 | 111.2 | 111.2 | 112.2 | 112.2 |
| 111.51 | 111.62 | 111.3 | 111.3 | 112.3 | 112.3 |
| 111.62 | 111.73 | 111.4 | 111.4 | 112.4 | 112.4 |
| 111.73 | 111.84 | 111.5 | 111.5 | 112.5 | 112.5 |
| 111.84 | 111.95 | 111.6 | 111.6 | 112.6 | 112.6 |
| 111.95 | 112.06 | 111.7 | 111.7 | 112.7 | 112.7 |
| 112.06 | 112.17 | 111.8 | 111.8 | 112.8 | 112.8 |
| 112.17 | 112.28 | 111.9 | 111.9 | 112.9 | 112.9 |
| 112.28 | 112.39 | 112.0 | 112.0 | 113.0 | 113.0 |
| 112.39 | 112.50 | 112.1 | 112.1 | 113.1 | 113.1 |
| 112.50 | 112.61 | 112.2 | 112.2 | 113.2 | 113.2 |
| 112.61 | 112.72 | 112.3 | 112.3 | 113.3 | 113.3 |
| 112.72 | 112.83 | 112.4 | 112.4 | 113.4 | 113.4 |
| 112.83 | 112.94 | 112.5 | 112.5 | 113.5 | 113.5 |
| 112.94 | 113.05 | 112.6 | 112.6 | 113.6 | 113.6 |
| 113.05 | 113.16 | 112.7 | 112.7 | 113.7 | 113.7 |
| 113.16 | 113.27 | 112.8 | 112.8 | 113.8 | 113.8 |
| 113.27 | 113.38 | 112.9 | 112.9 | 113.9 | 113.9 |
| 113.38 | 113.49 | 113.0 | 113.0 | 114.0 | 114.0 |
| 113.49 | 113.60 | 113.1 | 113.1 | 114.1 | 114.1 |
| 113.60 | 113.71 | 113.2 | 113.2 | 114.2 | 114.2 |
| 113.71 | 113.82 | 113.3 | 113.3 | 114.3 | 114.3 |
| 113.82 | 113.93 | 113.4 | 113.4 | 114.4 | 114.4 |
| 113.93 | 114.04 | 113.5 | 113.5 | 114.5 | 114.5 |
| 114.04 | 114.15 | 113.6 | 113.6 | 114.6 | 114.6 |
| 114.15 | 114.26 | 113.7 | 113.7 | 114.7 | 114.7 |
| 114.26 | 114.37 | 113.8 | 113.8 | 114.8 | 114.8 |
| 114.37 | 114.48 | 113.9 | 113.9 | 114.9 | 114.9 |
| 114.48 | 114.59 | 114.0 | 114.0 | 115.0 | 115.0 |
| 114.59 | 114.70 | 114.1 | 114.1 | 115.1 | 115.1 |
| 114.70 | 114.81 | 114.2 | 114.2 | 115.2 | 115.2 |
| 114.81 | 114.92 | 114.3 | 114.3 | 115.3 | 115.3 |
| 114.92 | 115.03 | 114.4 | 114.4 | 115.4 | 115.4 |
| 115.03 | 115.14 | 114.5 | 114.5 | 115.5 | 115.5 |
| 115.14 | 115.25 | 114.6 | 114.6 | 115.6 | 115.6 |
| 115.25 | 115.36 | 114.7 | 114.7 | 115.7 | 115.7 |
| 115.36 | 115.47 | 114.8 | 114.8 | 115.8 | 115.8 |
| 115.47 | 115.58 | 114.9 | 114.9 | 115.9 | 115.9 |
| 115.58 | 115.69 | 115.0 | 115.0 | 116.0 | 116.0 |
| 115.69 | 115.80 | 115.1 | 115.1 | 116.1 | 116.1 |
| 115.80 | 115.91 | 115.2 | 115.2 | 116.2 | 116.2 |
| 115.91 | 116.02 | 115.3 | 115.3 | 116.3 | 116.3 |
| 116.02 | 116.13 | 115.4 | 115.4 | 116.4 | 116.4 |
| 116.13 | 116.24 | 115.5 | 115.5 | 116.5 | 116.5 |
| 116.24 | 116.35 | 115.6 | 115.6 | 116.6 | 116.6 |
| 116.35 | 116.46 | 115.7 | 115.7 | 116.7 | 116.7 |
| 116.46 | 116.57 | 115.8 | 115.8 | 116.8 | 116.8 |
| 116.57 | 116.68 | 115.9 | 115.9 | 116.9 | 116.9 |
| 116.68 | 116.79 | 116.0 | 116.0 | 117.0 | 117.0 |
| 116.79 | 116.90 | 116.1 | 116.1 | 117.1 | 117.1 |
| 116.90 | 117.01 | 116.2 | 116.2 | 117.2 | 117.2 |
| 117.01 | 117.12 | 116.3 | 116.3 | 117.3 | 117.3 |
| 117.12 | 117.23 | 116.4 | 116.4 | 117.4 | 117.4 |
| 117.23 | 117.34 | 116.5 | 116.5 | 117.5 | 117.5 |
| 117.34 | 117.45 | 116.6 | 116.6 | 117.6 | 117.6 |
| 117.45 | 117.56 | 116.7 | 116.7 | 117.7 | 117.7 |
| 117.56 | 117.67 | 116.8 | 116.8 | 117.8 | 117.8 |
| 117.67 | 117.78 | 116.9 | 116.9 | 117.9 | 117.9 |
| 117.78 | 117.89 | 117.0 | 117.0 | 118.0 | 118.0 |
| 117.89 | 118.00 | 117.1 | 117.1 | 118.1 | 118.1 |
| 118.00 | 118.11 | 117.2 | 117.2 | 118.2 | 118.2 |
| 118.11 | 118.22 | 117.3 | 117.3 | 118.3 | 118.3 |
| 118.22 | 118.33 | 117.4 | 117.4 | 118.4 | 118.4 |
| 118.33 | 118.44 | 117.5 | 117.5 | 118.5 | 118.5 |
| 118.44 | 118.55 | 117.6 | 117.6 | 118.6 | 118.6 |
| 118.55 | 118.66 | 117.7 | 117.7 | 118.7 | 118.7 |
| 118.66 | 118.77 | 117.8 | 117.8 | 118.8 | 118.8 |
| 118.77 | 118.88 | 117.9 | 117.9 | 118.9 | 118.9 |
| 118.88 | 118.99 | 118.0 | 118.0 | 119.0 | 119.0 |
| 118.99 | 119.10 | 118.1 | 118.1 | 119.1 | 119.1 |
| 119.10 | 119.21 | 118.2 | 118.2 | 119.2 | 119.2 |
| 119.21 | 119.32 | 118.3 | 118.3 | 119.3 | 119.3 |
| 119.32 | 119.43 | 118.4 | 118.4 | 119.4 | 119.4 |
| 119.43 | 119.54 | 118.5 | 118.5 | 119.5 | 119.5 |
| 119.54 | 119.65 | 118.6 | 118.6 | | |