

INDEX OF SHEETS

SHEET NO. 1	TITLE PAGE
" 2	TYPICAL CROSS-SECTION OF IMPROVEMENT (SPRADING, BASE, DRAINAGE & GUARD RAIL WITH DOUBLE FACK COAT OF RETINED TAR ITEM 29)
" 3	BANKING AND WIDENING TABLES
" 4-6	PLAN AND PROFILE SHEETS
" 7	STANDARD SHEET S-20; PIPE CULVERTS
" 8	" " S-30; GUARD RAIL
" 9	" " S-31; BOUNDARY MARKERS
" 10	" " S-40; BARRICADES, SIGNS & LIGHTS
" 11	DETAILS OF 12' x 12' R.C. BOX
" 12-20	CROSS-SECTIONS

Standard sheet S-20 approved by the Chief Engineer on July 14, 1933.

Standard sheet S-30 approved by the Chief Engineer on Aug. 15, 1933.

Standard sheet S-31 approved by the Chief Engineer on July 25, 1934.

STATE OF VERMONT  
STATE HIGHWAY DEPARTMENT

PLAN AND PROFILE OF PROPOSED  
STATE HIGHWAY

U. S. WORKS PROGRAM GRADE MUNICIPALITY PROJECT

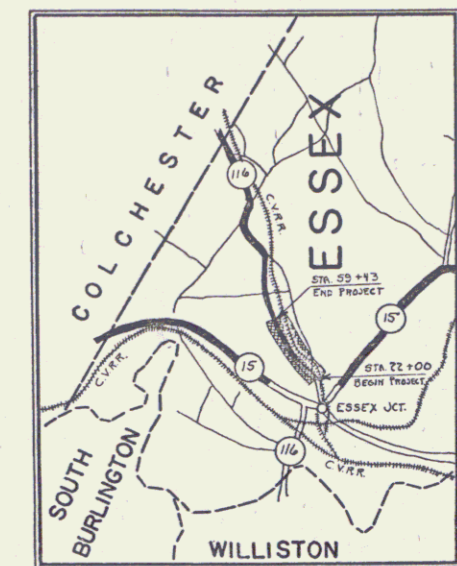
TOWN OF ESSEX

ESSEX JCT.-COLCHESTER ROAD

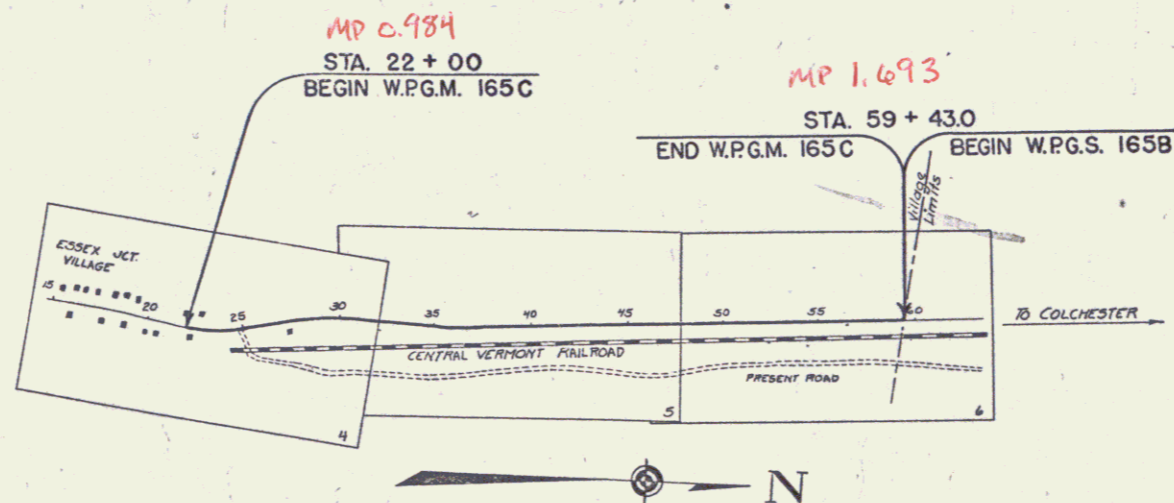
BEGINNING IN THE VILLAGE OF ESSEX JCT., IN FRONT OF THE RESIDENCE OF MARCUS WESTCOTT, AND EXTENDING NORTHERLY 0.708 MILES TO THE VILLAGE LIMITS.

LENGTH OF PROJECT 3743.0 FT. = 0.708 MILES

FED. ROAD DIST. NO.	STATE	W.P.G.M. PROJ. NO.	FISCAL YEAR	SHEET NO.	TOTAL SHEETS
9	VT.	165C	1934	1	20



Pin# 99R724



RECORD PLANS

RIGHT-OF-WAY DIVISION  
TOWN FILE

PERPETUAL

Town of ESSEX

(To Be Returned To R.O.W. Division)

APPROVED: Sept 6, 1935  
H. S. Jaquet  
COMMISSIONER OF HIGHWAYS

SUBMITTED BY ORDER OF THE STATE HIGHWAY BOARD

Route VT2A

RECOMMENDED \_\_\_\_\_  
DISTRICT ENGINEER BUREAU OF PUBLIC ROADS

RECOMMENDED FOR APPROVAL \_\_\_\_\_  
CHIEF ENGINEER BUREAU OF PUBLIC ROADS

APPROVED \_\_\_\_\_  
DIRECTOR - BUREAU OF PUBLIC ROADS

CORRECT: AS  
ROAD ENGINEER

SERIES W.P.G.M. No. 165C FILED  
SHEET 1 OF 20

CONVENTIONAL SIGNS

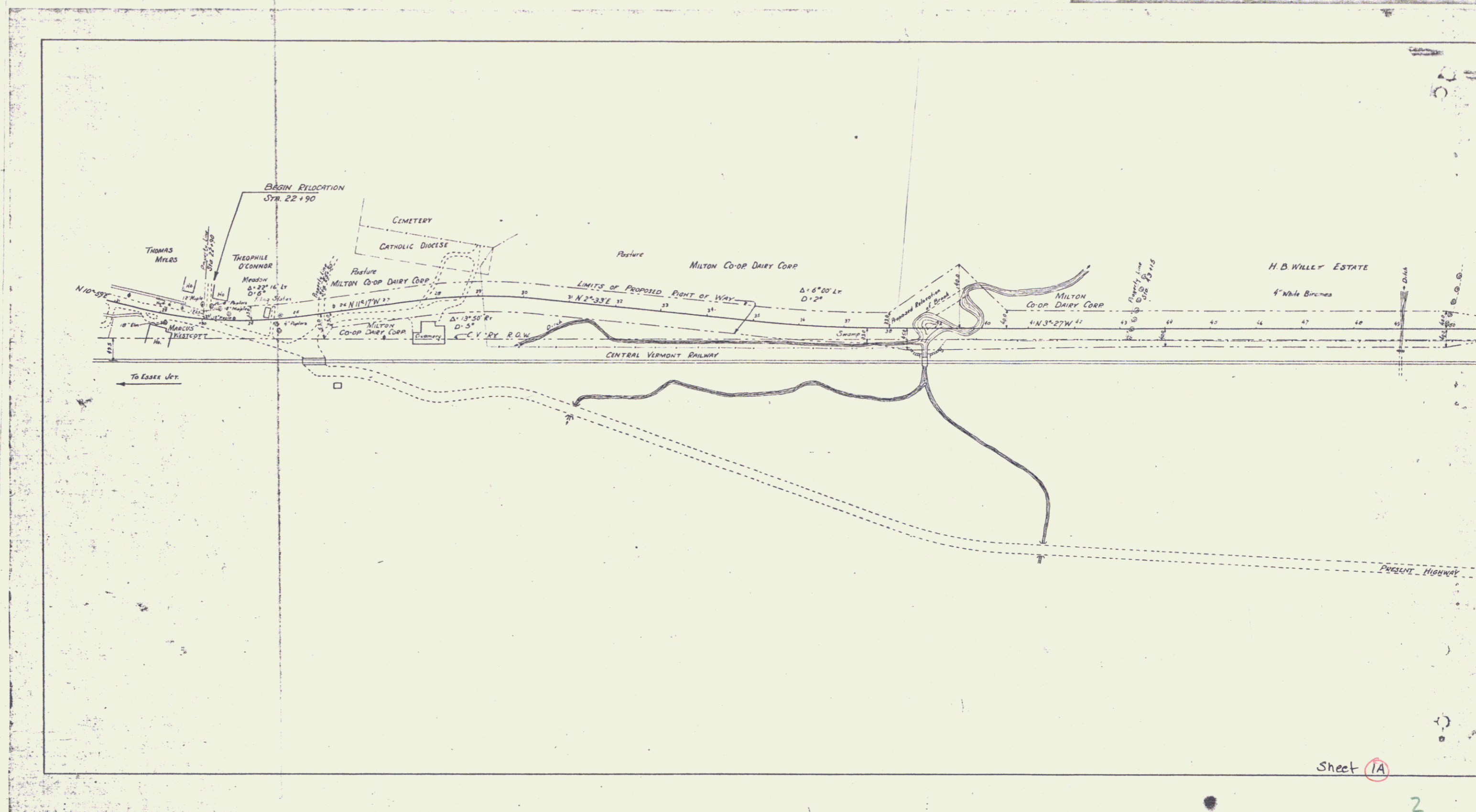
- COUNTY LINE
- TOWN LINE
- FENCE LINE
- STONE WALL
- UNFENCED PROPERTY
- GUARD RAIL
- TRAVELED WAY
- RAILROAD
- RETAINING WALL
- CENTER LINE
- SURVEY LINE
- CULVERT
- DROP INLET
- TROLLEY POLE
- POWER POLE
- TELEPHONE POLE
- TREES
- HEDGE

- GROUND ELEVATION
- GRADE ELEVATION
- DEFLECTION ANGLE
- DEGREE OF CURVE
- RADIUS OF CURVE
- TANGENT DISTANCE
- LENGTH OF CURVE
- EXTERNAL DISTANCE
- POINT OF INTERSECTION
- POINT OF CURVE
- POINT OF TANGENT
- POINT ON TANGENT

SCALES

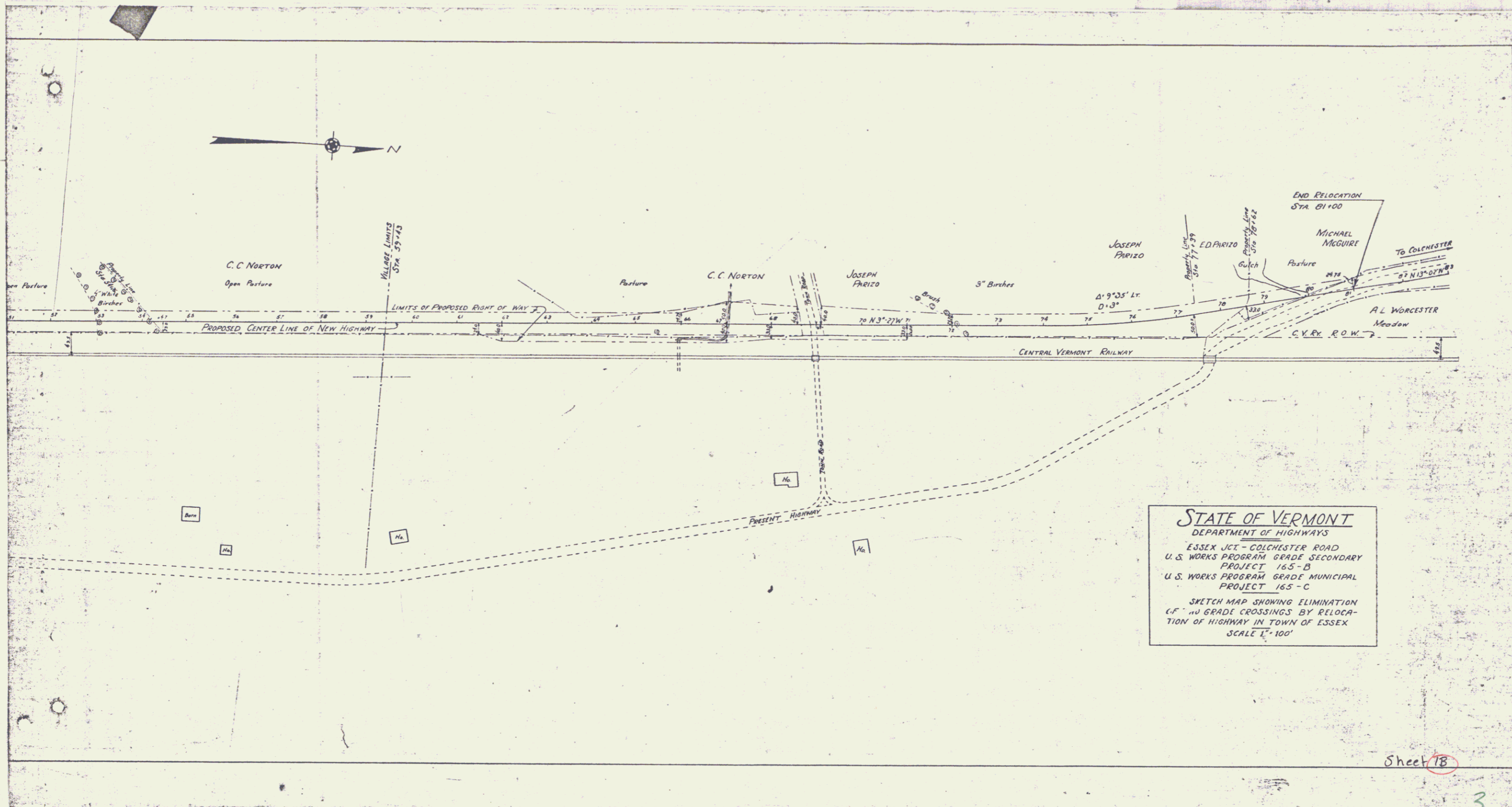
TITLE	1" = 500'
TYPICAL	1" = 5'
PLAN	1" = 50'
PROFILE	1" = 10'
CROSS-SECTIONS	1" = 5'

These plans are subject to such revisions as may be required by the Bureau of Public Roads or the Commissioner of Highways. Construction is to be carried on in accordance with the plans and Standard Road and Bridge Specifications of 1930 including all subsequent approved revisions and such revised specifications and special provisions as are submitted with the plans.



Sheet 1A

2



STATE OF VERMONT  
 DEPARTMENT OF HIGHWAYS  
 ESSEX JCT - COLCHESTER ROAD  
 U.S. WORKS PROGRAM GRADE SECONDARY  
 PROJECT 165-B  
 U.S. WORKS PROGRAM GRADE MUNICIPAL  
 PROJECT 165-C  
 SKETCH MAP SHOWING ELIMINATION  
 OF TWO GRADE CROSSINGS BY RELOCA-  
 TION OF HIGHWAY IN TOWN OF ESSEX  
 SCALE 1" = 100'

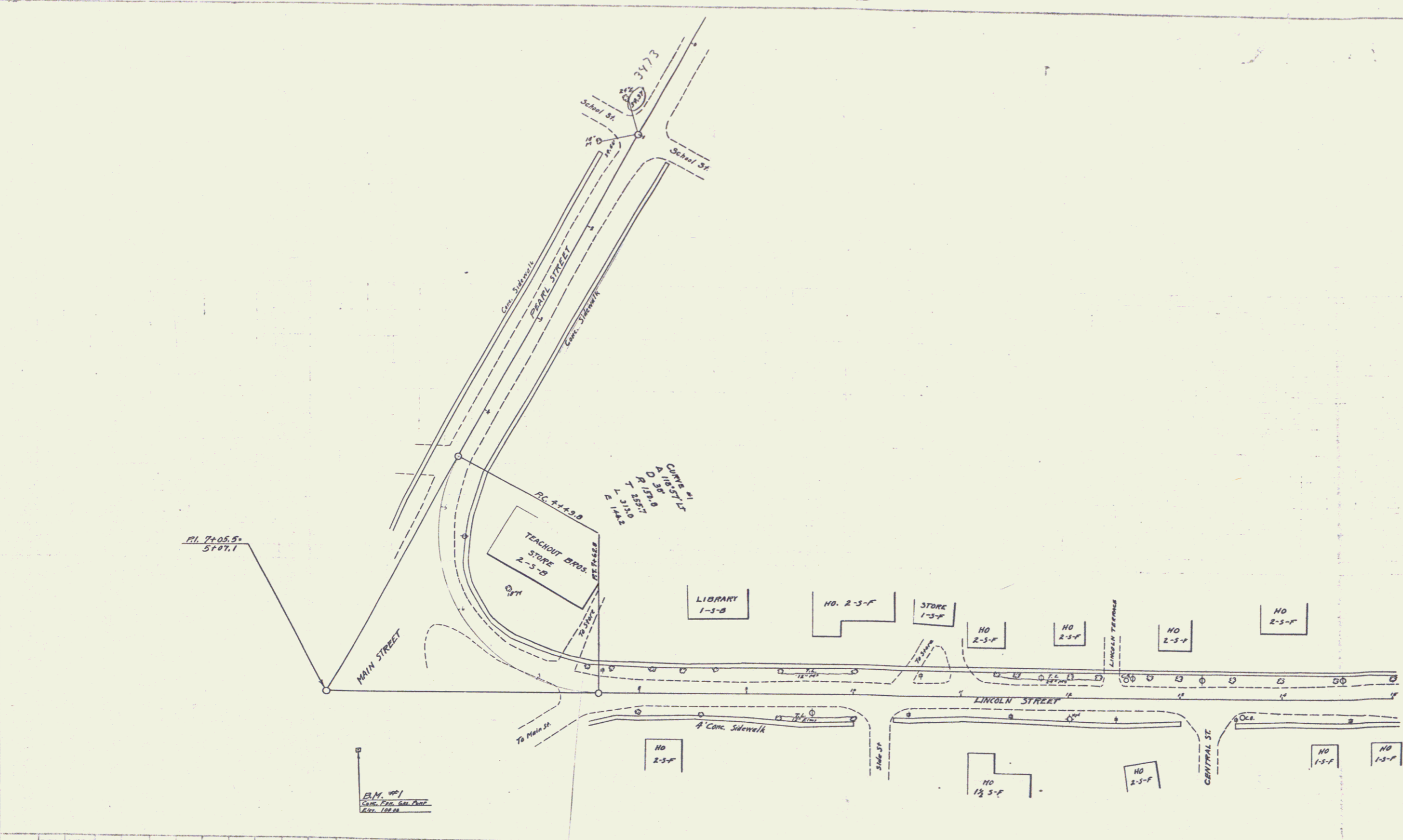
Sheet 18

3

PLAN  
 TITLE  
 DATE  
 DRAWN BY  
 CHECKED BY  
 SCALE  
 SHEET

PL. 74-05-5  
 5197.1

PL. 74-05-5  
 5197.1

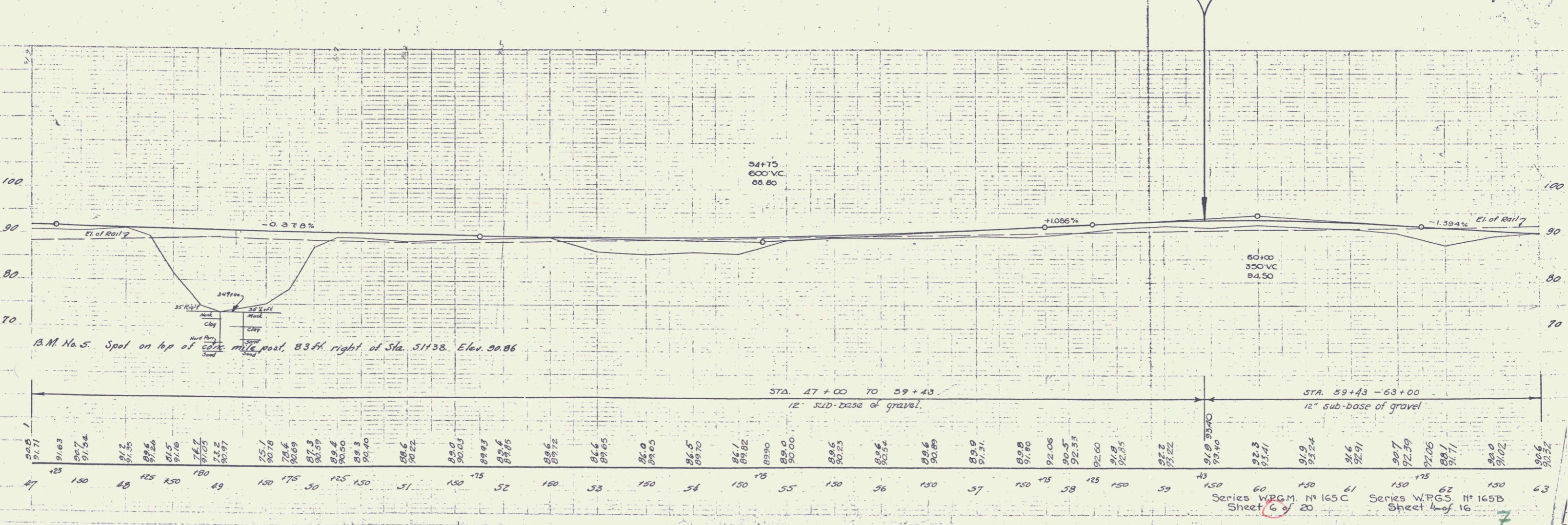
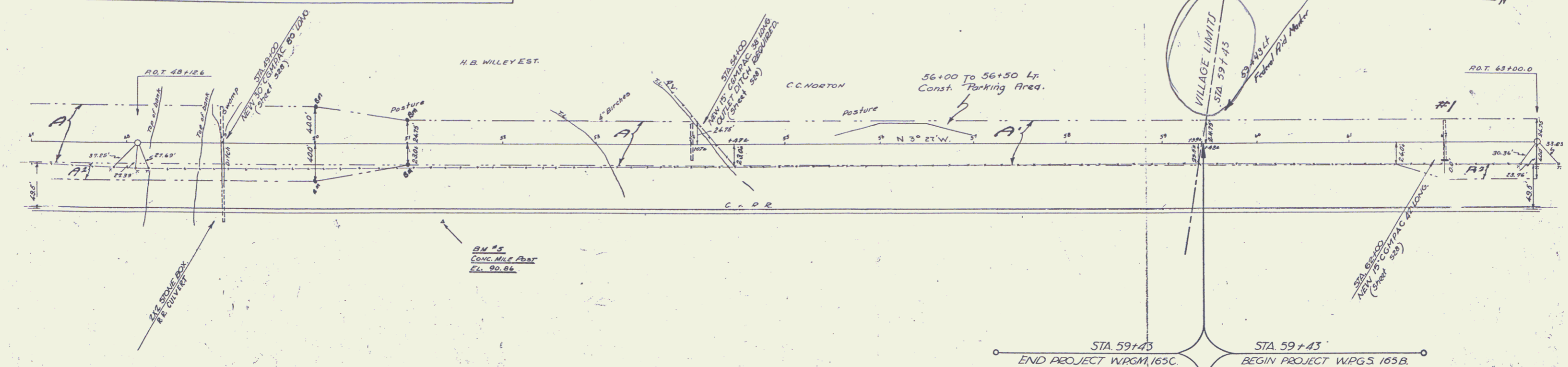






Parcel	Acid of Instrument	Date of Instrument	Grantor	Grantee	Recorded	Remarks
A	W.D.	1-13-36	H.B. Willey Est.	Stet H. A1	115	1-33-36
A <sup>2</sup>	Condemnation	11-1-35	Comp. Ry. Inc.	"	"	11-2-35 Filed
A <sup>3</sup>	W.D.	11-2-35	Comp. Ry. Inc.	"	"	11-2-35 Filed
A <sup>4</sup>	W.D.	11-2-35	Comp. Ry. Inc.	"	"	11-2-35 Filed

WRGM	165C	1936	6	20
STATE	W.P.G.S.	SERIAL SHEET	NO.	SHEET
VT	165B	1456	4	16



Sta.	47	48	49	50	51	52	53	54	55	56	57	58	59	60	61	62	63
Elev.	91.11	91.63	90.7	91.84	91.5	91.76	91.05	92.2	90.97	95.1	90.78	90.69	90.69	90.69	90.69	90.69	90.69

Series W.P.G.M. N° 165C Sheet 6 of 20  
 Series W.P.G.S. N° 165B Sheet 4 of 16