

INDEX OF SHEETS

SHEET NO.	TITLE PAGE
1	TITLE PAGE
2	TYPICAL CROSS-SECTION OF IMPROVEMENT (2% GRAVEL MIXED-IN-PLACE SURFACE COURSE WITH RETINED TRAFFIC ITEMS 24B & 24H)
3	BANKING AND WIDENING TABLES
4-6	PLAN AND PROFILE SHEETS
7	OF BRIDGE
8	DETAILS OF ABUTMENTS NO. 1 & 2
9	SERIES S.B. NO. 21 TYPICAL DETAIL, 5117.
10	SERIES S.B. NO. 20; NO. 25-28 (70' SPAN)
11	S.B. NO. 20; TYPICAL DETAILS, 5105, 5109, 5111, 5112, GENERAL NOTES
12	S.B. NO. 20; CABLE RAIL
13	S.B. NO. 11; BARRICADES, SIGNS & LIGHTS
14	STANDARD STRUCTURE SHEET 522; PIPE CULVERTS
15	530; GUARD RAIL
16	531; BOUNDARY MARKERS
17-25	CROSS-SECTIONS

Standard Structure Sheet 528 approved by the Chief Engineer on July 11, 1933.

Standard Structure Sheet 530 approved by the Chief Engineer on Aug. 15, 1933.

Standard Structure Sheet 531 approved by the Chief Engineer on July 25, 1934.

STATE OF VERMONT
STATE HIGHWAY DEPARTMENT

PLAN AND PROFILE OF PROPOSED
STATE HIGHWAY

U. S. WORKS PROGRAM STATE SECONDARY PROJECT (W.P.S.S. 189A)

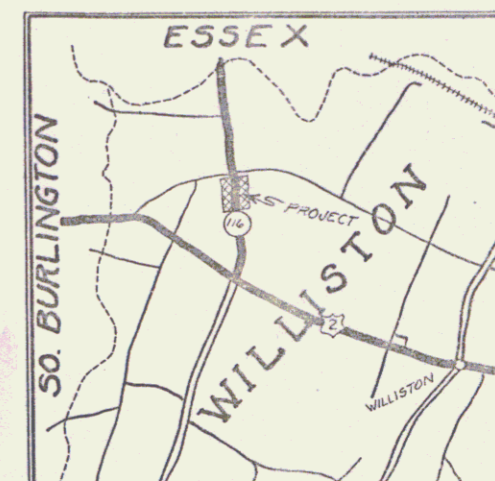
TOWN OF WILLISTON

WILLISTON-ESSEX JCT. ROAD

BEGINNING AT A POINT 350 FT. SOUTH OF THE RESIDENCE OF L.I. BING, AND EXTENDING NORTHERLY 0.388 MILES TO A POINT 300 FT. NORTH OF THE RESIDENCE OF MARTIN DWYEA.

LENGTH OF PROJECT 2050.0 FT. = 0.388 MILES
 " " BRIDGE 740 " = 0.014 "
 " " ROADWAY 1976.0 " = 0.374 "

FED. ROAD DIST. NO.	STATE	U.S.P.S. PROJ. NO.	FISCAL YEAR	SHEET NO.	TOTAL SHEETS
9	VT.	189A	1934	1	25



Pin# 99R718

Route: Vt 2A

RECORD PLANS FOR BRIDGE
APRIL 2, 1937
R.F.T.

RIGHT-OF-WAY DIVISION
TOWN FILE

PERPETUAL

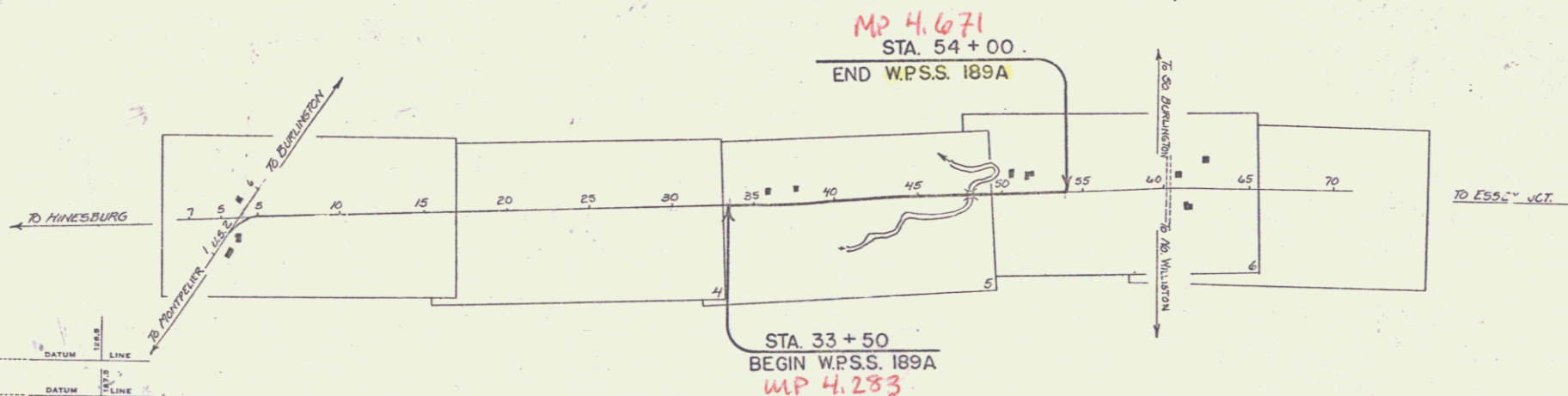
pt
Town of Vt 2A

(To Be Returned To R.O.W. Division)

APPROVED: Dec. 6, 1935

COMMISSIONER OF HIGHWAYS

SUBMITTED BY ORDER OF THE STATE HIGHWAY BOARD



CONVENTIONAL SIGNS

- COUNTY LINE
- TOWN LINE
- FENCE LINE
- STONE WALL
- UNFENCED PROPERTY
- GUARD RAIL
- TRAVELED WAY
- RAILROAD
- RETAINING WALL
- CENTER LINE
- SURVEY LINE
- CULVERT
- DROP INLET
- TROLLEY POLE
- POWER POLE
- TELEPHONE POLE
- TREES
- HEDGE

- GROUND ELEVATION
- GRADE ELEVATION

- CURVE DATA
- DEFLECTION ANGLE
 - DEGREE OF CURVE
 - RADIUS OF CURVE
 - TANGENT DISTANCE
 - LENGTH OF CURVE
 - EXTERNAL DISTANCE
 - POINT OF INTERSECTION
 - POINT OF CURVE
 - POINT OF TANGENT
 - POINT ON TANGENT

SCALES

TITLE	1" = 500'
TYPICAL	1" = 8'
PLAN	1" = 50'
PROFILE	1" = 10'
CROSS-SECTIONS	1" = 5'

These plans are subject to such revisions as may be required by the Bureau of Public Roads or the Commissioner of Highways. Construction is to be carried on in accordance with the plans and Standard Road and Bridge Specifications of 1930, including all subsequent approved revisions, and such revised specifications and special provisions as are submitted with the plans. Attention of the contractor is called to the fact the State Highway Board reserves the right to extend this project at the same contract prices. Said cost of extension not to exceed 25% of the amount of the contract.

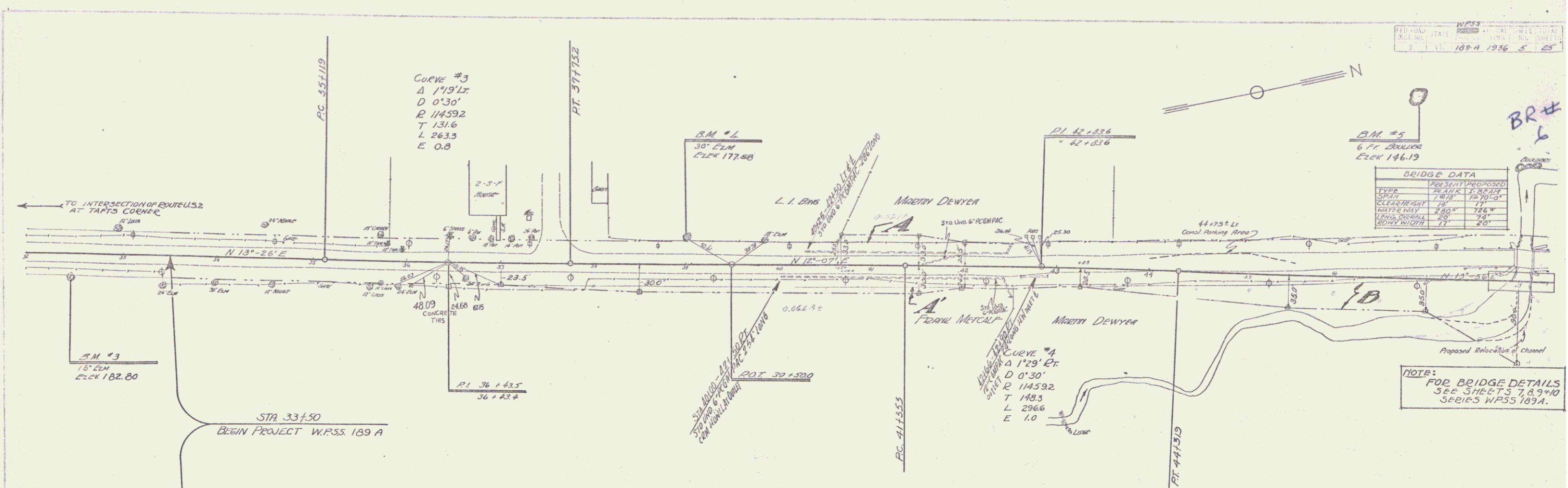
RECOMMENDED
DISTRICT ENGINEER BUREAU OF PUBLIC ROADS
RECOMMENDED FOR APPROVAL
CHIEF ENGINEER BUREAU OF PUBLIC ROADS
APPROVED
DIRECTOR BUREAU OF PUBLIC ROADS

CONTRACT: Dec. 6, 1935
ROAD ENGINEER

SERIES W.P.S.S. No. 189A FILED
SHEET 1 OF 25

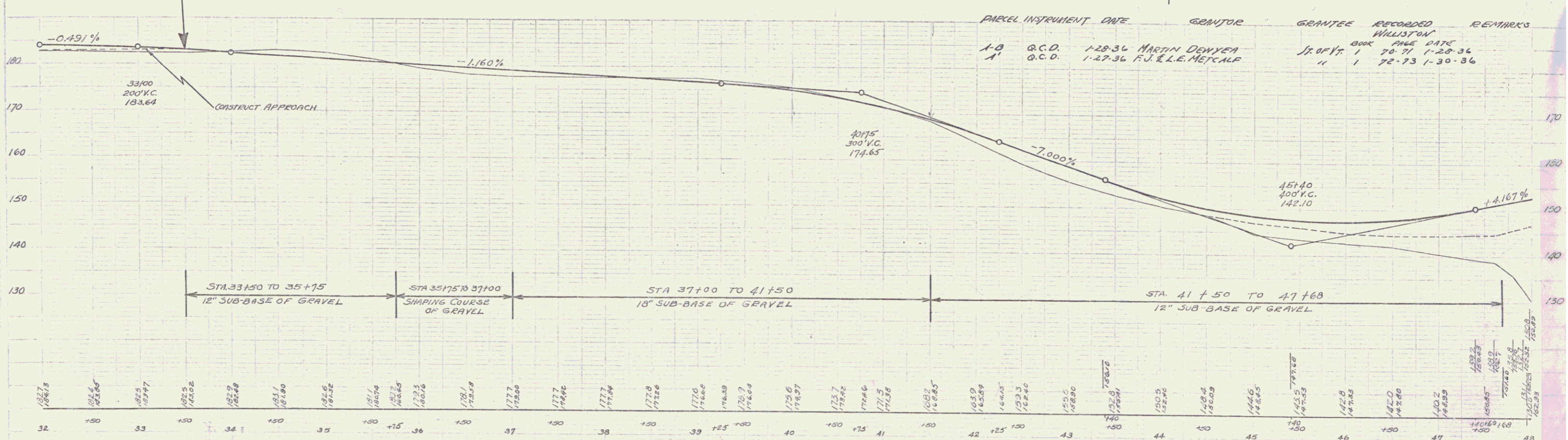
DIST. # 5 PLANS

FABRINISTON
 WOOD
 WAYNS
 TRACES
 FABRINISTON
 WOOD
 WAYNS
 TRACES



BRIDGE DATA	
TYPE	PRESENT PROPOSED
SPAN	28' 0" 28' 0"
CLEARANCE	10' 0" 10' 0"
WATERWAY	28' 0" 28' 0"
LONGITUDINAL	7.2% 7.2%
CROSSING	7.2% 7.2%

NOTE:
 FOR BRIDGE DETAILS
 SEE SHEETS 7, 8, 9 & 10
 SERIES WP55 189-A.

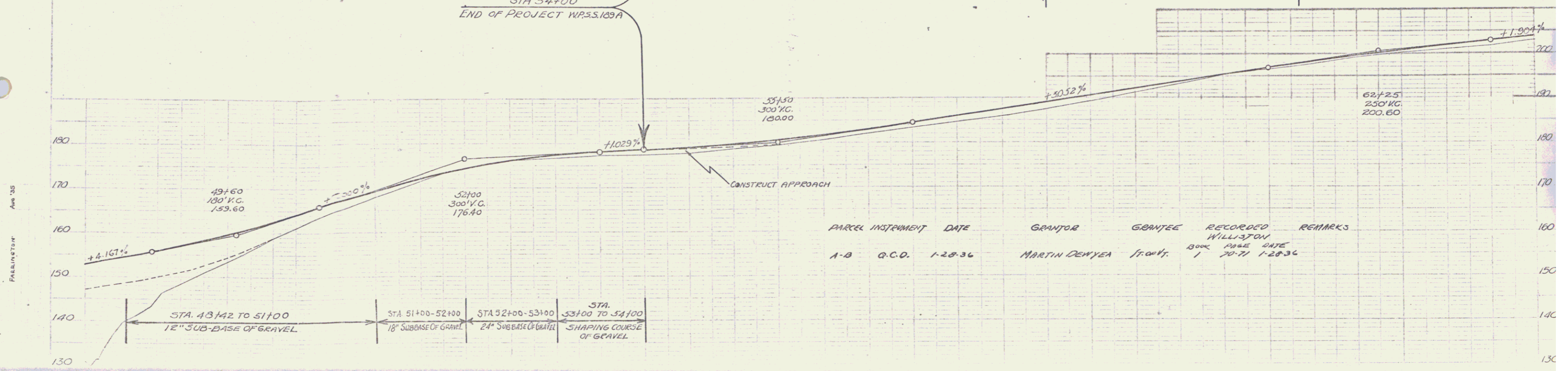
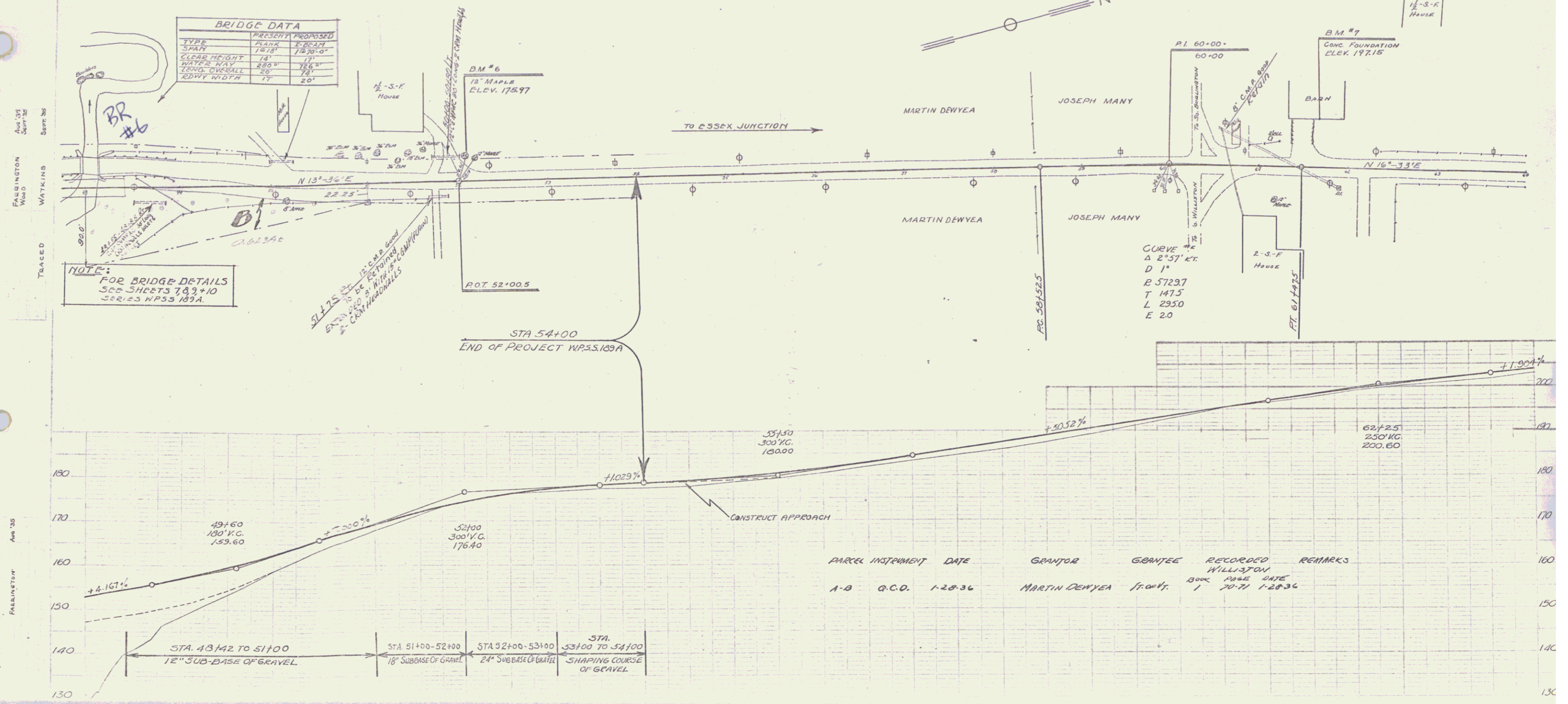


B.M. #3 SPIKE IN ROOT OF 18' ELM 23' RIGHT OF STA 32+45 ELEY. 182.80
 B.M. #2 SPIKE IN ROOT OF 30' ELM 24' LEFT OF STA 33+04 ELEY. 177.58
 B.M. #5 CROSS ON LEDGE 200' LEFT OF STA 46+87 ELEY. 146.19

SERIES WP55 189-A
 Sheet 5 of 25

BRIDGE DATA	
TYPE	PROPOSED
SPAN	18' 00"
CLEAR HEIGHT	17'
WATERWAY	18' 00"
LENG. OVERALL	20'
RDMY WIDTH	17'

NOTE:
 FOR BRIDGE DETAILS
 SEE SHEETS 7, 8 & 10
 SERIES WPSS 189A.

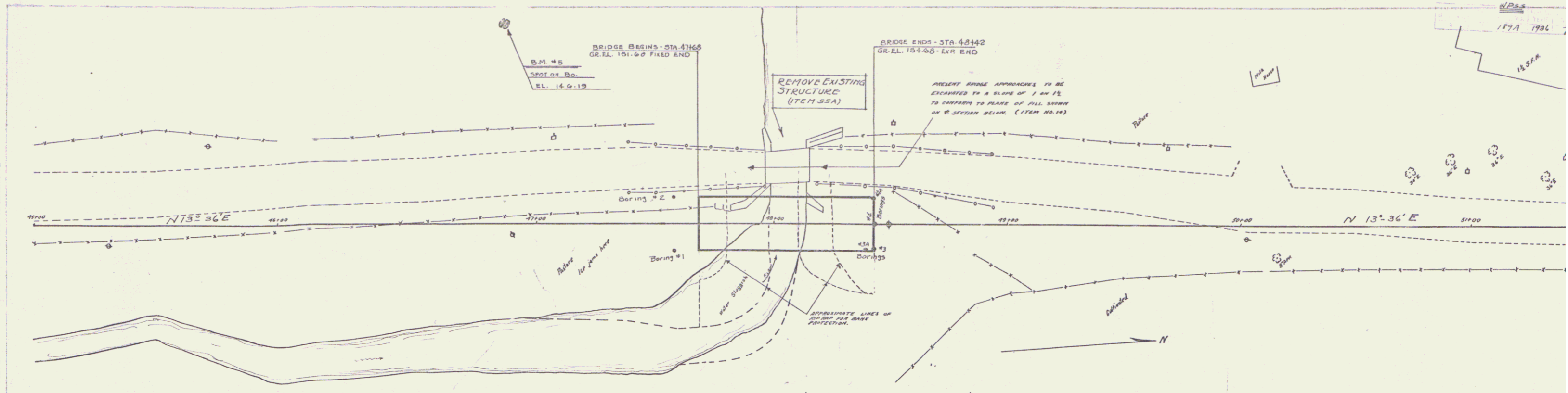


PARCEL	INSTRUMENT	DATE	GRANTOR	GRANTEE	RECORDED	REMARKS
A-B	Q.C.D.	1-28-36	MARTIN DEWEYA	FRANK WILLISTON	BOOK 1	PAGE 20-21 DATE 1-28-36

STA.	SUBBASE OF GRAVEL
48+142 TO 51+00	12" SUBBASE OF GRAVEL
51+00 TO 52+00	18" SUBBASE OF GRAVEL
52+00 TO 53+00	24" SUBBASE OF GRAVEL
53+00 TO 54+00	SHAPING COURSE OF GRAVEL

STATION	ELEVATION	STATION	ELEVATION	STATION	ELEVATION	STATION	ELEVATION
48+00	148.33	50+00	152.24	52+00	176.40	54+00	177.4
48+10	148.33	50+10	152.24	52+10	176.40	54+10	177.4
48+20	148.33	50+20	152.24	52+20	176.40	54+20	177.4
48+30	148.33	50+30	152.24	52+30	176.40	54+30	177.4
48+40	148.33	50+40	152.24	52+40	176.40	54+40	177.4
48+50	148.33	50+50	152.24	52+50	176.40	54+50	177.4
48+60	148.33	50+60	152.24	52+60	176.40	54+60	177.4
48+70	148.33	50+70	152.24	52+70	176.40	54+70	177.4
48+80	148.33	50+80	152.24	52+80	176.40	54+80	177.4
48+90	148.33	50+90	152.24	52+90	176.40	54+90	177.4
49+00	148.33	51+00	152.24	53+00	176.40	55+00	177.4
49+10	148.33	51+10	152.24	53+10	176.40	55+10	177.4
49+20	148.33	51+20	152.24	53+20	176.40	55+20	177.4
49+30	148.33	51+30	152.24	53+30	176.40	55+30	177.4
49+40	148.33	51+40	152.24	53+40	176.40	55+40	177.4
49+50	148.33	51+50	152.24	53+50	176.40	55+50	177.4
49+60	148.33	51+60	152.24	53+60	176.40	55+60	177.4
49+70	148.33	51+70	152.24	53+70	176.40	55+70	177.4
49+80	148.33	51+80	152.24	53+80	176.40	55+80	177.4
49+90	148.33	51+90	152.24	53+90	176.40	55+90	177.4
50+00	148.33	52+00	152.24	54+00	176.40	56+00	177.4
50+10	148.33	52+10	152.24	54+10	176.40	56+10	177.4
50+20	148.33	52+20	152.24	54+20	176.40	56+20	177.4
50+30	148.33	52+30	152.24	54+30	176.40	56+30	177.4
50+40	148.33	52+40	152.24	54+40	176.40	56+40	177.4
50+50	148.33	52+50	152.24	54+50	176.40	56+50	177.4
50+60	148.33	52+60	152.24	54+60	176.40	56+60	177.4
50+70	148.33	52+70	152.24	54+70	176.40	56+70	177.4
50+80	148.33	52+80	152.24	54+80	176.40	56+80	177.4
50+90	148.33	52+90	152.24	54+90	176.40	56+90	177.4
51+00	148.33	53+00	152.24	55+00	176.40	57+00	177.4
51+10	148.33	53+10	152.24	55+10	176.40	57+10	177.4
51+20	148.33	53+20	152.24	55+20	176.40	57+20	177.4
51+30	148.33	53+30	152.24	55+30	176.40	57+30	177.4
51+40	148.33	53+40	152.24	55+40	176.40	57+40	177.4
51+50	148.33	53+50	152.24	55+50	176.40	57+50	177.4
51+60	148.33	53+60	152.24	55+60	176.40	57+60	177.4
51+70	148.33	53+70	152.24	55+70	176.40	57+70	177.4
51+80	148.33	53+80	152.24	55+80	176.40	57+80	177.4
51+90	148.33	53+90	152.24	55+90	176.40	57+90	177.4
52+00	148.33	54+00	152.24	56+00	176.40	58+00	177.4
52+10	148.33	54+10	152.24	56+10	176.40	58+10	177.4
52+20	148.33	54+20	152.24	56+20	176.40	58+20	177.4
52+30	148.33	54+30	152.24	56+30	176.40	58+30	177.4
52+40	148.33	54+40	152.24	56+40	176.40	58+40	177.4
52+50	148.33	54+50	152.24	56+50	176.40	58+50	177.4
52+60	148.33	54+60	152.24	56+60	176.40	58+60	177.4
52+70	148.33	54+70	152.24	56+70	176.40	58+70	177.4
52+80	148.33	54+80	152.24	56+80	176.40	58+80	177.4
52+90	148.33	54+90	152.24	56+90	176.40	58+90	177.4
53+00	148.33	55+00	152.24	57+00	176.40	59+00	177.4
53+10	148.33	55+10	152.24	57+10	176.40	59+10	177.4
53+20	148.33	55+20	152.24	57+20	176.40	59+20	177.4
53+30	148.33	55+30	152.24	57+30	176.40	59+30	177.4
53+40	148.33	55+40	152.24	57+40	176.40	59+40	177.4
53+50	148.33	55+50	152.24	57+50	176.40	59+50	177.4
53+60	148.33	55+60	152.24	57+60	176.40	59+60	177.4
53+70	148.33	55+70	152.24	57+70	176.40	59+70	177.4
53+80	148.33	55+80	152.24	57+80	176.40	59+80	177.4
53+90	148.33	55+90	152.24	57+90	176.40	59+90	177.4
54+00	148.33	56+00	152.24	58+00	176.40	60+00	177.4
54+10	148.33	56+10	152.24	58+10	176.40	60+10	177.4
54+20	148.33	56+20	152.24	58+20	176.40	60+20	177.4
54+30	148.33	56+30	152.24	58+30	176.40	60+30	177.4
54+40	148.33	56+40	152.24	58+40	176.40	60+40	177.4
54+50	148.33	56+50	152.24	58+50	176.40	60+50	177.4
54+60	148.33	56+60	152.24	58+60	176.40	60+60	177.4
54+70	148.33	56+70	152.24	58+70	176.40	60+70	177.4
54+80	148.33	56+80	152.24	58+80	176.40	60+80	177.4
54+90	148.33	56+90	152.24	58+90	176.40	60+90	177.4
55+00	148.33	57+00	152.24	59+00	176.40	61+00	177.4
55+10	148.33	57+10	152.24	59+10	176.40	61+10	177.4
55+20	148.33	57+20	152.24	59+20	176.40	61+20	177.4
55+30	148.33	57+30	152.24	59+30	176.40	61+30	177.4
55+40	148.33	57+40	152.24	59+40	176.40	61+40	177.4
55+50	148.33	57+50	152.24	59+50	176.40	61+50	177.4
55+60	148.33	57+60	152.24	59+60	176.40	61+60	177.4
55+70	148.33	57+70	152.24	59+70	176.40	61+70	177.4
55+80	148.33	57+80	152.24	59+80	176.40	61+80	177.4
55+90	148.33	57+90	152.24	59+90	176.40	61+90	177.4
56+00	148.33	58+00	152.24	60+00	176.40	62+00	177.4
56+10	148.33	58+10	152.24	60+10	176.40	62+10	177.4
56+20	148.33	58+20	152.24	60+20	176.40	62+20	177.4
56+30	148.33	58+30	152.24	60+30	176.40	62+30	177.4
56+40	148.33	58+40	152.24	60+40	176.40	62+40	177.4
56+50	148.33	58+50	152.24	60+50	176.40	62+50	177.4
56+60	148.33	58+60	152.24	60+60	176.40	62+60	177.4
56+70	148.33	58+70	152.24	60+70	176.40	62+70	177.4
56+80	148.33	58+80	152.24	60+80	176.40	62+80	177.4
56+90	148.33	58+90	152.24	60+90	176.40	62+90	177.4
57+00	148.33	59+00	152.24	61+00	176.40	63+00	177.4
57+10	148.33	59+10	152.24	61+10	176.40	63+10	177.4
57+20	148.33	59+20	152.24	61+20	176.40	63+20	177.4
57+30	148.33	59+30	152.24	61+30	176.40	63+30	177.4
57+40	148.33	59+40	152.24	61+40	176.40	63+40	177.4
57+50	148.33	59+50	152.24	61+50	176.40	63+50	177.4
57+60	148.33	59+60	152.24	61+60	176.40	63+60	177.4
57+70	148.33	59+70	152.24	61+70	176.40	63+70	177.4
57+80	148.33	59+80	152.24	61+80	176.40	63+80	177.4
57+90	148.33	59+90	152.24	61+90	176.40	63+90	177.4
58+00	148.33	60+00	152.24	62+00	176.40	64+00	177.4
58+10	148.33	60+10	152.24	62+10	176.40	64+10	177.4
58+20	148.33	60+20	152.24	62+20	176.40	64+20	177.4
58+30	148.33	60+30	152.24	62+30	176.40	64+30	177.4
58+40	148.33	60+40	152.24	62+40	176.40	64+40	177.4
58+50	148.33	60+50	152.24	62+50	176.40	64+50	177.4
58+60	148.33	60+60	152.24	62+60	176.40	64+60	177.4
58+70	148.33	60+70	152.24	62+70	176.40	64+70	177.4
58+80	148.33	60+80	152.24	62+80	176.40	64+80	177.4
58+90	148.33	60+90	152.24	62+90	176.40	64+90	177.4

B.M. #6 SPIKE IN ROOT OF 12" MAPLE 24' LEFT OF STA. 52+04 ELEV. 175.97
 B.M. #7 PAINT SPOT ON CONC. FOUNDATION OF BARN 54' LEFT OF STA. 61+67 ELEV. 197.15



BRIDGE DATA		
	PRESENT	PROPOSED
TYPE	PLANK	T BEAM
SPAN	19' 8"	16' 7 1/2"
CLEAR HEIGHT	14'	17'
WATER WAY	28.0'	26.0'
LENG. OVERALL	20'	24'
ROAD WIDTH	17'	20'

