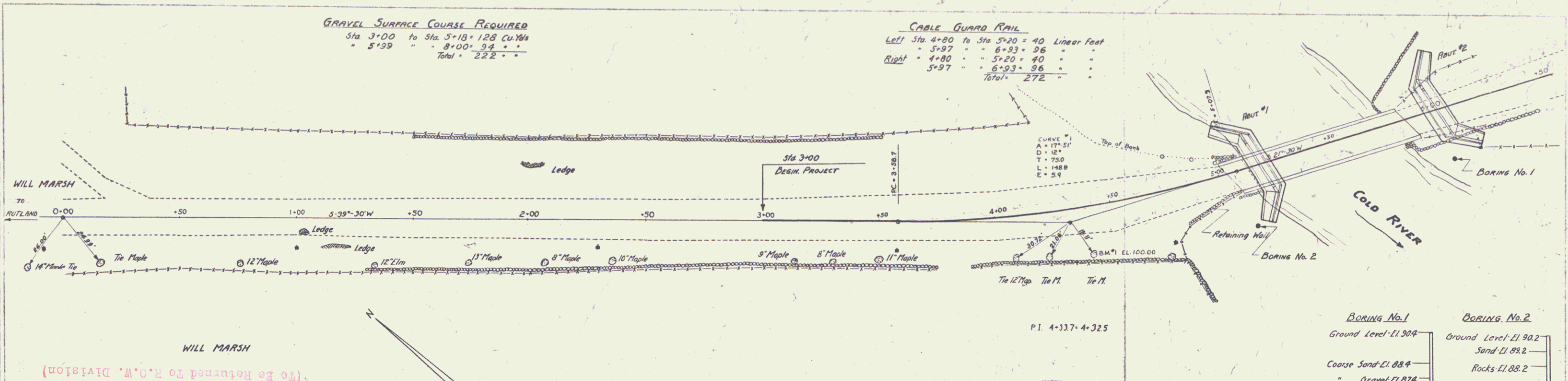


PLAN
 4 Feet
 1" = 40'



GRAVEL SURFACE COURSE REQUIRED
 Sta 3+00 to Sta 5+18 = 128 Cu.Yds
 " 5+19 " " 8+00 = 94 " "
 Total = 222 "

CABLE GUARD RAIL
 Left Sta 4+80 to Sta 5+20 = 40 Linear Feet
 " 5+97 " " 6+93 = 96 " "
 Right " 4+80 " " 5+20 = 40 " "
 " 5+97 " " 6+93 = 96 " "
 Total = 272 "

WILL MARSH
 (To Be Returned To R.O.W. Division)
 U77D
 PERPETUAL
 TOWN FILE
 RIGHT-OF-WAY DIVISION

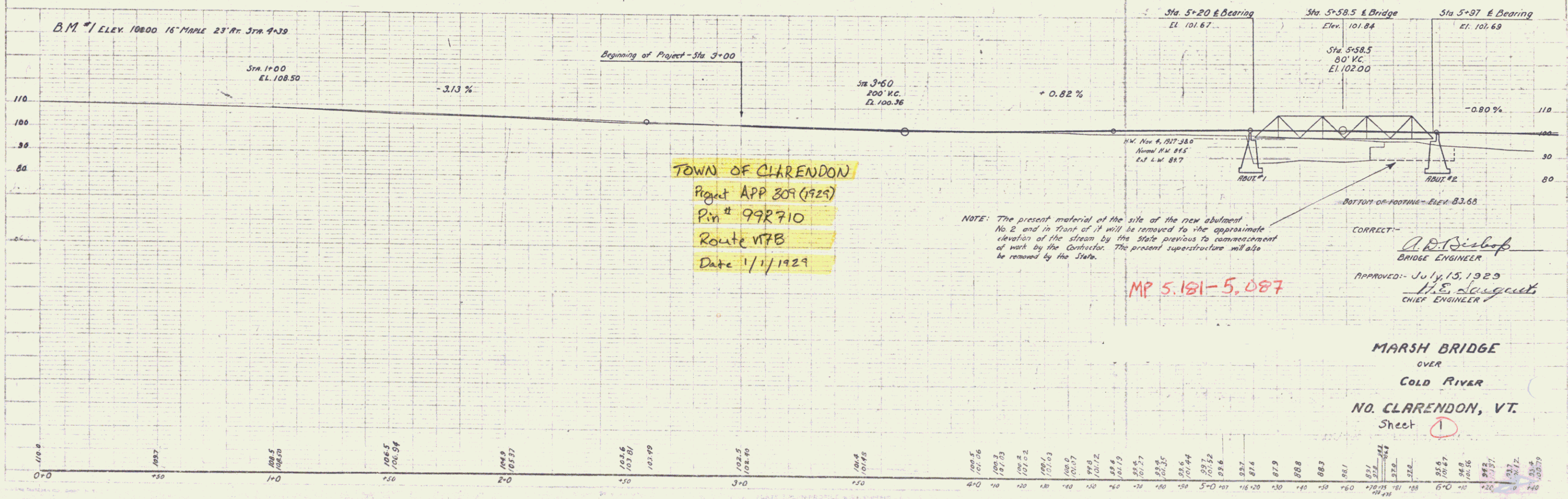
INDEX OF SHEETS
 Sheet No. 1-2 Plan and Profile.
 3 Superstructure-Series S.B. No. 18-No. 77' Span 15" Skew.
 4 Typical Details-Series S.B. No. 1.
 5 Substructure.
 6 Typical Details-Series S.B. No. 2.
 7 " " " S.B. No. 2A.
 8-9-10-11 Cross Sections
 12 Typical Section Gravel Surface Course 21' Roadway.
 13 522 Standard Structures Series S.No. 22.

SUMMARY OF QUANTITIES

Item 10-11 Common Excavation including Borrow	1150 Cu. Yds.
15 Structure Excavation	275 " "
20 A Gravel Surface Course	222 " "
34 A Concrete Class A (1:1:4)	52 " "
34 B " " D (1:2 1/2:5) <i>Asphalt on Cylinders</i>	272 " "
35 Reinforcing Steel	11,416 Lbs.
36 Steel Superstructure (37,500 sq')	1 Lump Sum
67 Cable Guard Rail	272 Lin. Ft.

BORING No. 1
 Ground Level-El. 90.4
 Coarse Sand-El. 88.4
 Gravel-El. 87.4
 Sand-El. 85.9
 Gravel-El. 84.9
 Boulder-El. 84.7

BORING No. 2
 Ground Level-El. 90.2
 Sand-El. 88.2
 Rocks-El. 88.2
 Coarse & fine sand-El. 86.2
 Sand & gravel-El. 85.7
 Boulder-El. 84.7



TOWN OF CLARENDON
 Project APP 309 (1929)
 Plan # 992710
 Route VTB
 Date 1/1/1929

NOTE: The present material of the site of the new abutment No. 2 and its flange if it will be removed to the approximate elevation of the stream by the State previous to commencement of work by the Contractor. The present superstructure will also be removed by the State.

MP 5.181-5.087

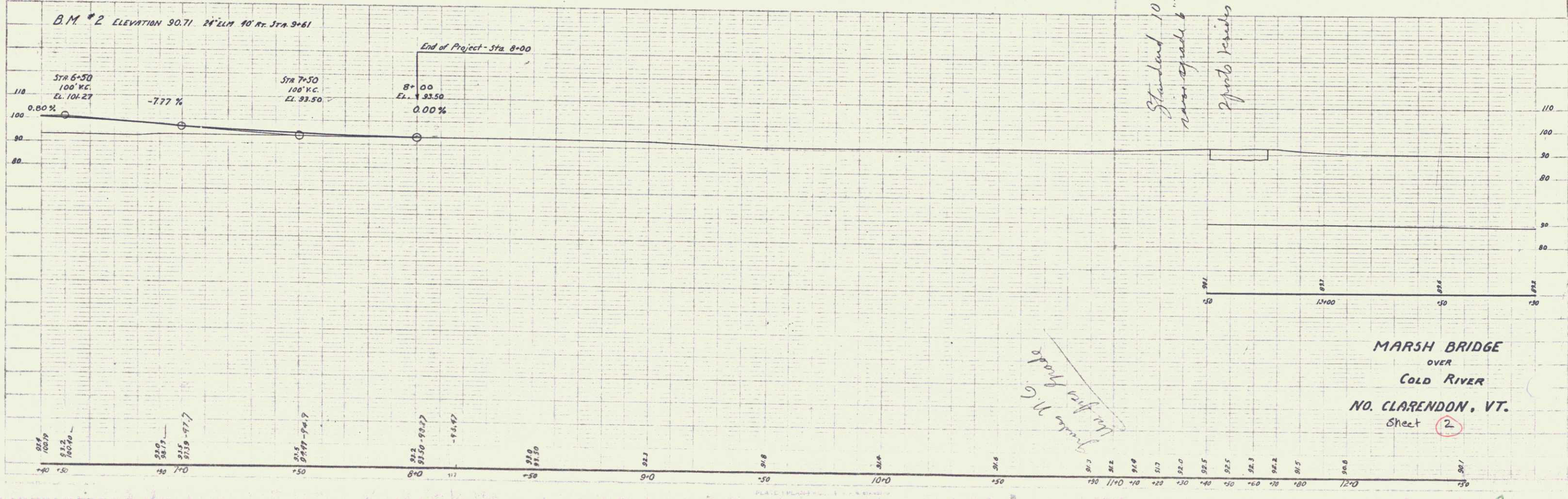
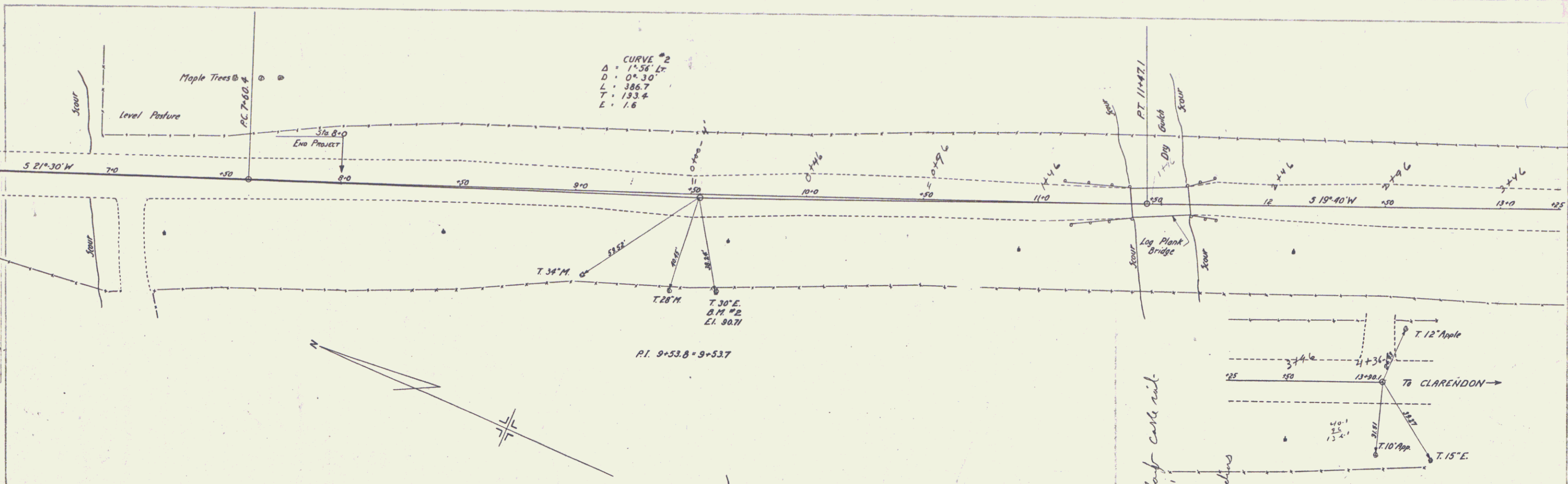
CORRECT
 A.D. Bishop
 BRIDGE ENGINEER
 APPROVED: July 15, 1929
 H.E. Sargent
 CHIEF ENGINEER

MARSH BRIDGE
 OVER
 COLD RIVER
 NO. CLARENDON, VT.
 Sheet 1

PROFILE
 4 Feet
 1" = 40'

PLAN
 PROPERTY
 BALDWIN & CLARK
 OF WATERVILLE

PROFILE
 PROPERTY
 BALDWIN & CLARK
 OF WATERVILLE



Standard 10' sleep cast iron
 river grade 6" 11"

Approx. Knives Anchor

Grade 11' 6" above
 9' 11' ground

MARSH BRIDGE
 OVER
 COLD RIVER
 NO. CLARENDON, VT.
 Sheet 2

