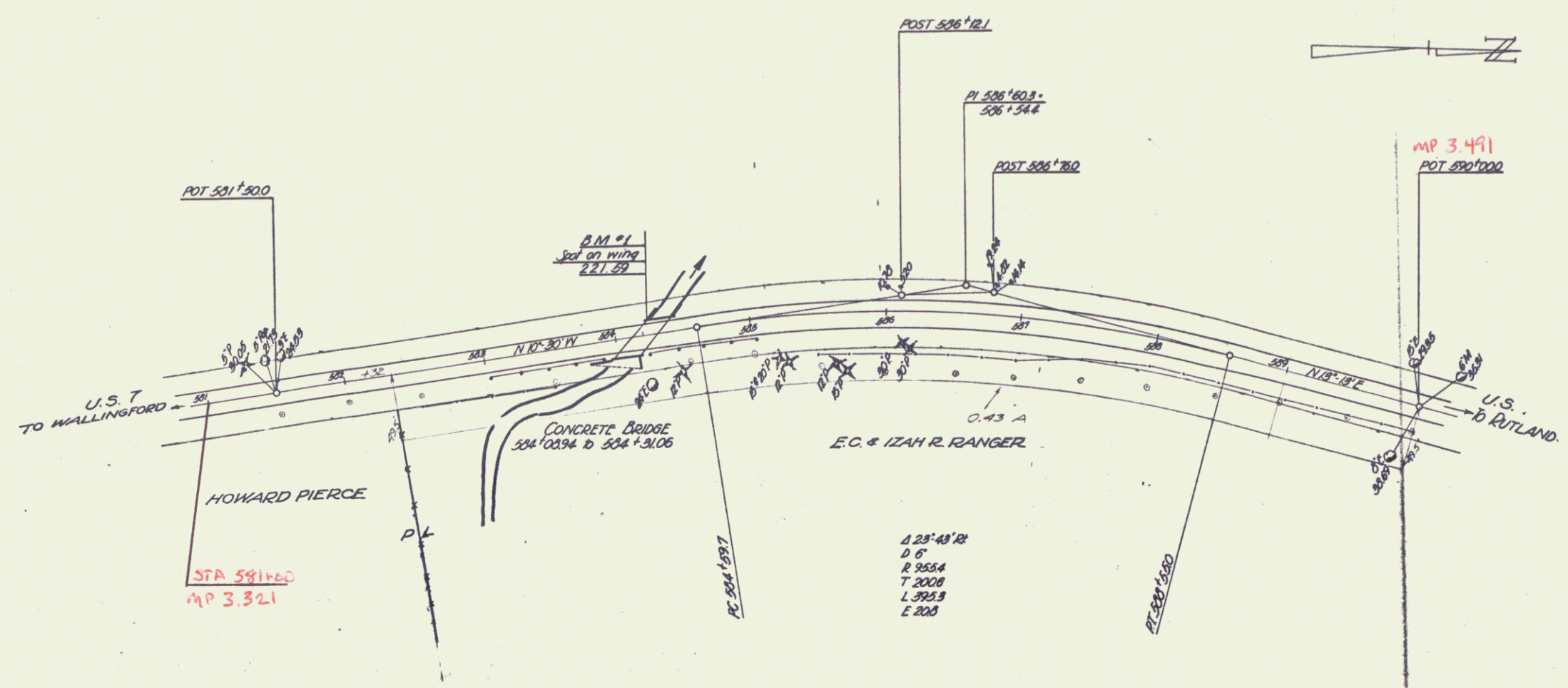


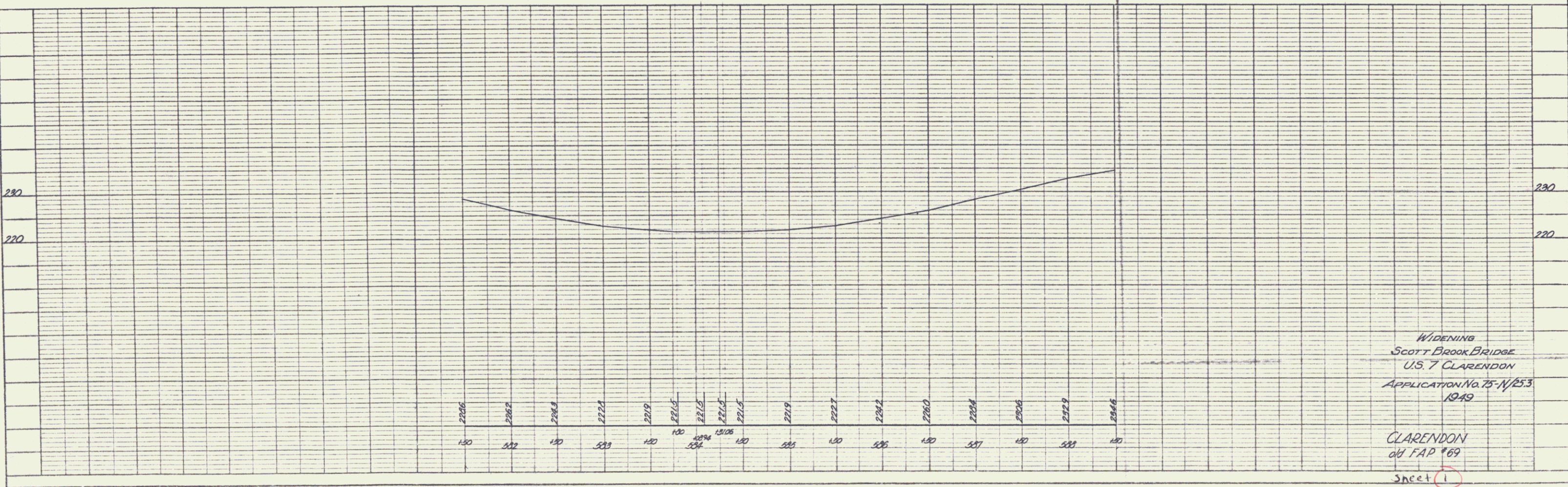
PLAN
 SHEET NO. 1
 PROJECT NO. 75N/253
 DATE 1/1/1949

PROFILE
 SHEET NO. 1
 PROJECT NO. 75N/253
 DATE 1/1/1949



TOWN OF CLARENDON
 Project App 75N/253 (1949)
 Pin # 99R708
 Route VT 7B
 Date 1/1/1949

RIGHT-OF-WAY DIVISION
 TOWN FILE
 PERPETUAL
 Town of VT
 (To Be Returned To R.O.W. Division)



WIDENING
 SCOTT BROOK BRIDGE
 U.S. 7 CLARENDON
 APPLICATION No. 75-N/253
 1949
 CLARENDON
 dt FAD '69
 Sheet 1

PLAN
 DATE
 SHEET NO.
 PROJECT NO.
 DRAWN BY
 CHECKED BY
 DATE

PROFILE
 DATE
 SHEET NO.
 PROJECT NO.
 DRAWN BY
 CHECKED BY
 DATE

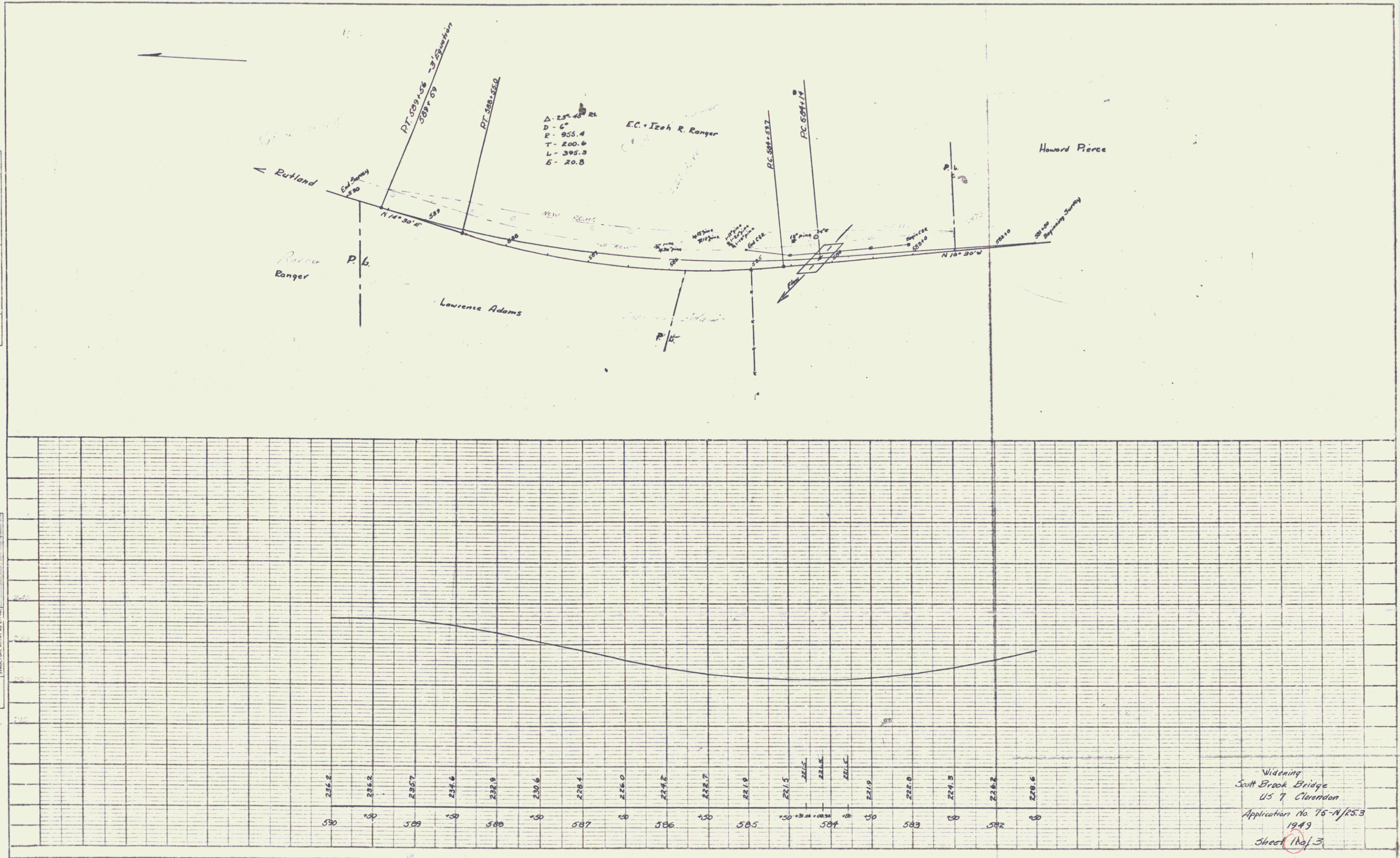


PLATE 1 - PLAN PROFILE OF BRIDGE
 THE PROVISIONS FOR BRIDGE

Widening
 Scott Brook Bridge
 US 7 Clarendon
 Application No. 75-N/25.3
 1949
 Sheet No. 3