

INDEX OF SHEETS

SHEET NO. 1	TITLE PAGE
2	TYPICAL CROSS-SECTION OF IMPROVEMENT
3	PLAN AND PROFILE STA. 106+00 TO STA. 121+00
4	121+00 TO 136+00
5	136+00 TO 151+00
6-10	CROSS SECTION

FED. STATE	STATE	FED. AID	PROJECT	SHEET	TOTAL
9	Vt.	69		1	10

STATE OF VERMONT
STATE HIGHWAY DEPARTMENT

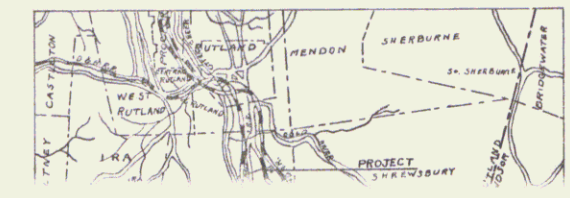
PLAN AND PROFILE OF PROPOSED
STATE HIGHWAY
FEDERAL AID PROJECT

TOWN OF CLARENDON

Pin# 99R207

Route V-78

Project F69



FROM 400 FT. NORTH OF THOMAS PIERCE HOUSE
TO 100 FT. SOUTH OF CHARLES N. LEE HOUSE

SCALES - Plan: 1 in = 50 Feet
Profile: Hor. 1 in = 50 Feet, Vert. 1 in = 10 Feet
Cross Section: 1 in = 5 Feet



LAYOUT - 1 in = 500 ft.

CONVENTIONAL SIGNS

COUNTY LINE	-----	GROUND ELEVATION	DATUM	LINE
TOWN LINE	-----	GRADE ELEVATION	DATUM	LINE
FENCE LINE	-----			
STONE WALL	-----			
UNFENCED PROPERTY	-----			
GUARD RAIL	-----			
TRAVELED WAY	-----			
RAILROAD	-----			
RETAINING WALL	-----			
CENTER LINE	-----			
SURVEY LINE	-----			
CULVERT	-----			
DROP INLET	-----			
TROLLEY POLE	-----			
POWER POLE	-----			
TELEPHONE POLE	-----			
TREES	-----			
HEDGE	-----			

CURVE DATA	
DEFLECTION ANGLE	Δ
DEGREE OF CURVE	D.
RADIUS OF CURVE	R.
TANGENT DISTANCE	T.
LENGTH OF CURVE	L.
EXTERNAL DISTANCE	E.
POINT OF INTERSECTION P.I.	P.I.
POINT OF CURVE	P.C.
POINT OF TANGENT	P.T.

11/23

SUBMITTED BY ORDER OF THE STATE HIGHWAY BOARD
[Signature]
CHIEF ENGINEER
DEPARTMENT OF HIGHWAYS

RECOMMENDED [Signature]
DISTRICT ENGINEER
BUREAU OF PUBLIC ROADS
RECOMMENDED FOR APPROVAL [Signature]
CHIEF ENGINEER
BUREAU OF PUBLIC ROADS
APPROVED [Signature]
DIRECTOR - BUREAU OF PUBLIC ROADS

SERIES F No. FILED
SHEET 1 OF 10

DIST. # 3 PLANS

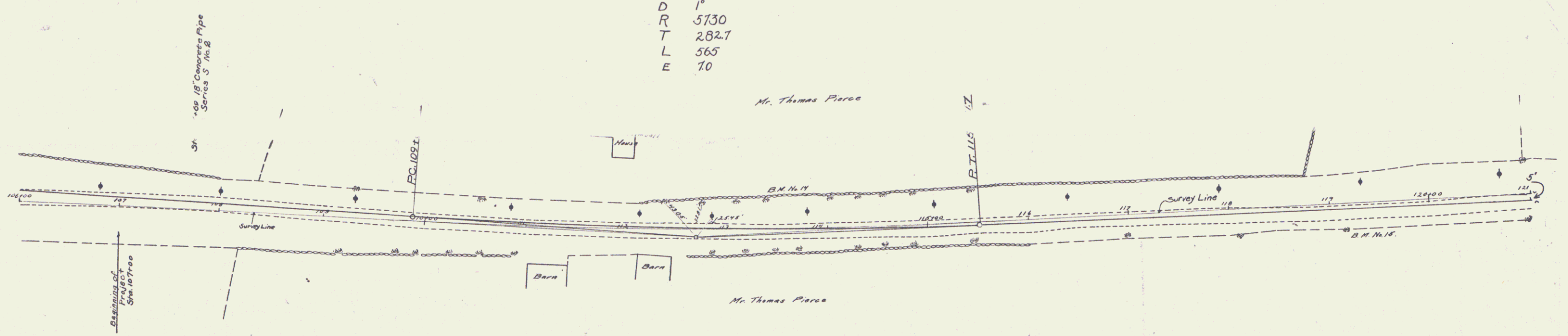
Guard Rail Required
On Left
Sta. 107+57 to Sta. 107+81 Length 24'
On Right
Sta. 107+57 to Sta. 107+81 Length 24'
Total This Sheet 48 ft.

Culverts Required
Sta. 107+09 18" Concrete Pipe
1-2'-5" Con. 2.5 Cuyab.

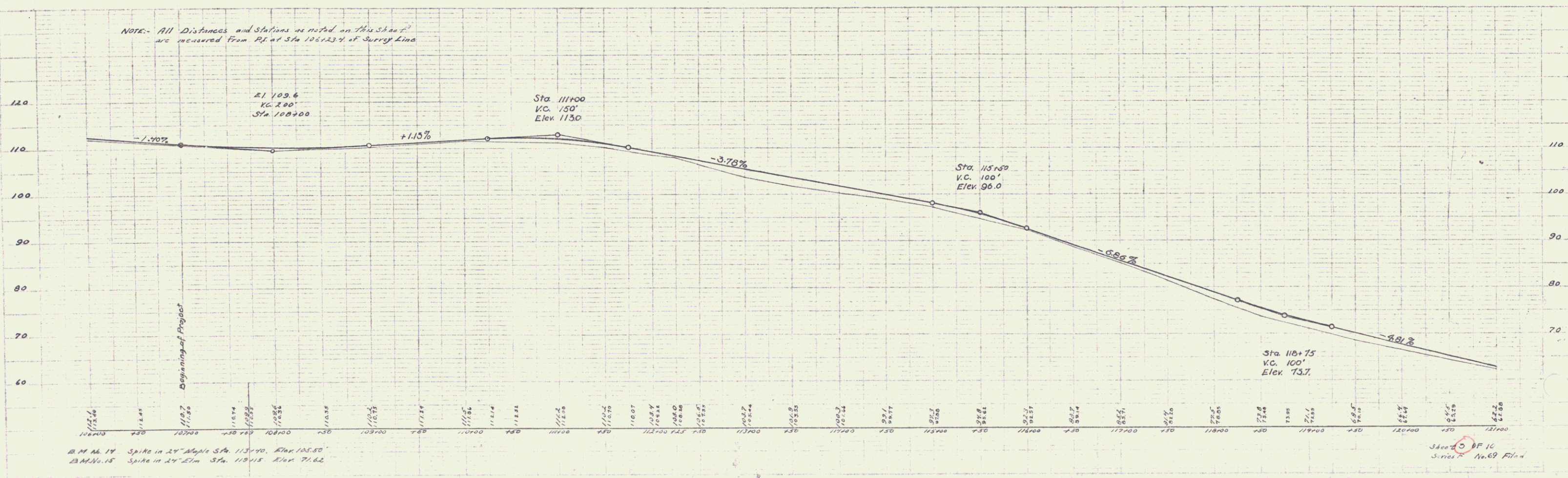
Sub-Base Required
Sta. 107+70 to Sta. 120+00 Length 1230 ft.

PROJ. NO.	STATE	PROJ. NO.	FISCAL YEAR	SHEET NO.	TOTAL SHEETS
3	VT	69	1923	3	10

Curve No. 24
 Δ 6°-39'
 D 1'
 R 5730
 T 282.7
 L 565
 E 10



NOTE: All Distances and Stations as noted on this sheet are measured from P.I. at Sta. 100+23.7 of Survey Line



B.M. No. 14 Spike in 24" Angle Sta. 113+90 Elev. 105.80
 B.M. No. 15 Spike in 24" 27m Sta. 116+15 Elev. 71.82

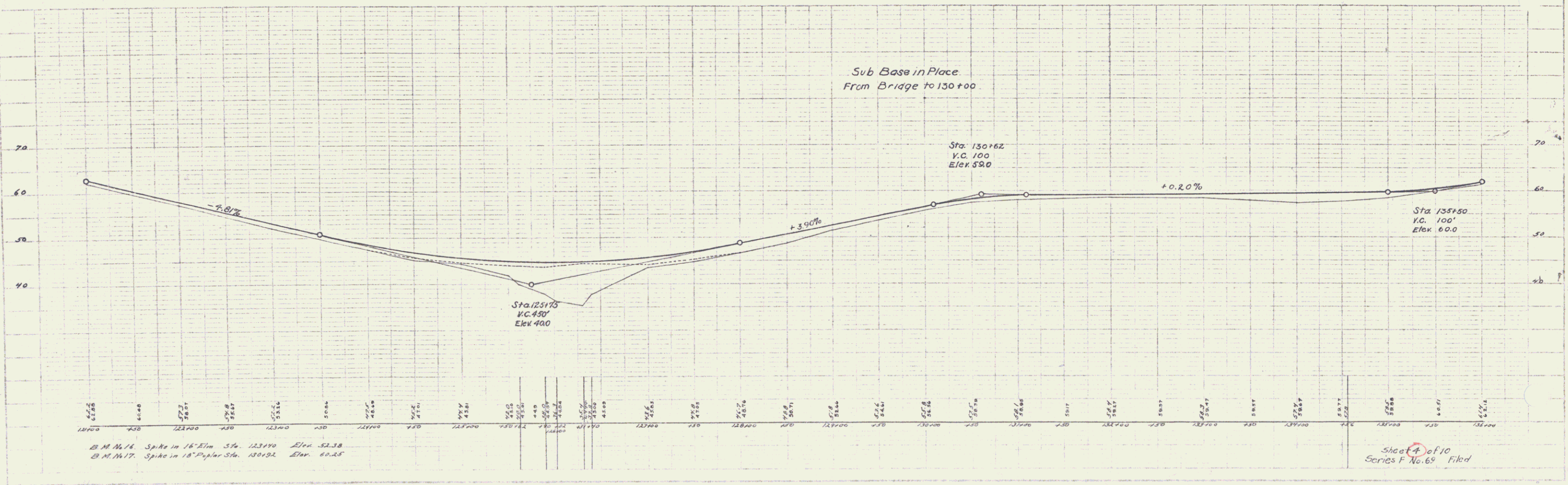
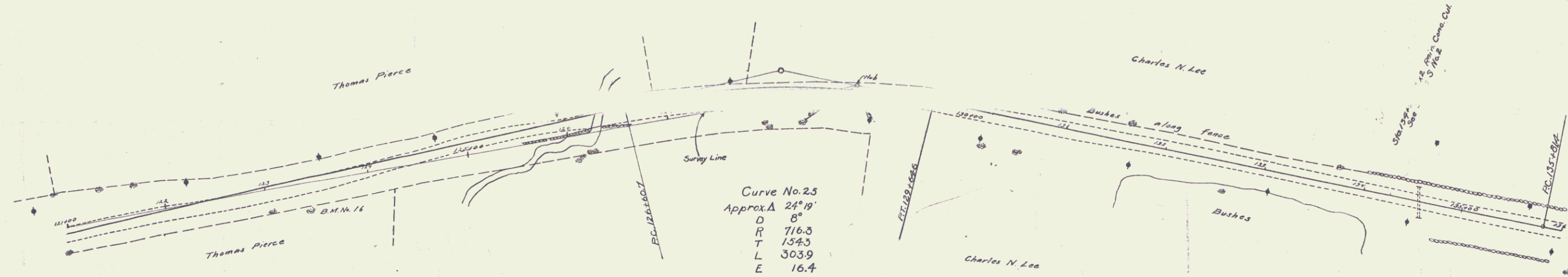
Sheet 3 of 10
 Series No. 69 File 4

Guard Rail Required
On Left
Sta 125+00 to Sta 126+30 Length 30'
.. 126+40 .. 127+70 .. 30'

On Right
Sta 125+50 to Sta 126+30 Length 80'
.. 126+40 .. 126+72 .. 32'
.. 126+73 .. 127+47 .. 24'
Total this Sheet 512ft

New Culverts Required
Sta. 134+26 2x2' Rein. Con. Culvert
1-2-4 Con. 60 Cuyals
1-2-5 Con. 79 Cuyals
Rein. Steel 158'

Sta 128+35
Bridge - Standard Series S No. 7
10' Span



Sub-Base Required
Sta 136+00 to Sta 146+00 Length 1000.0 ft

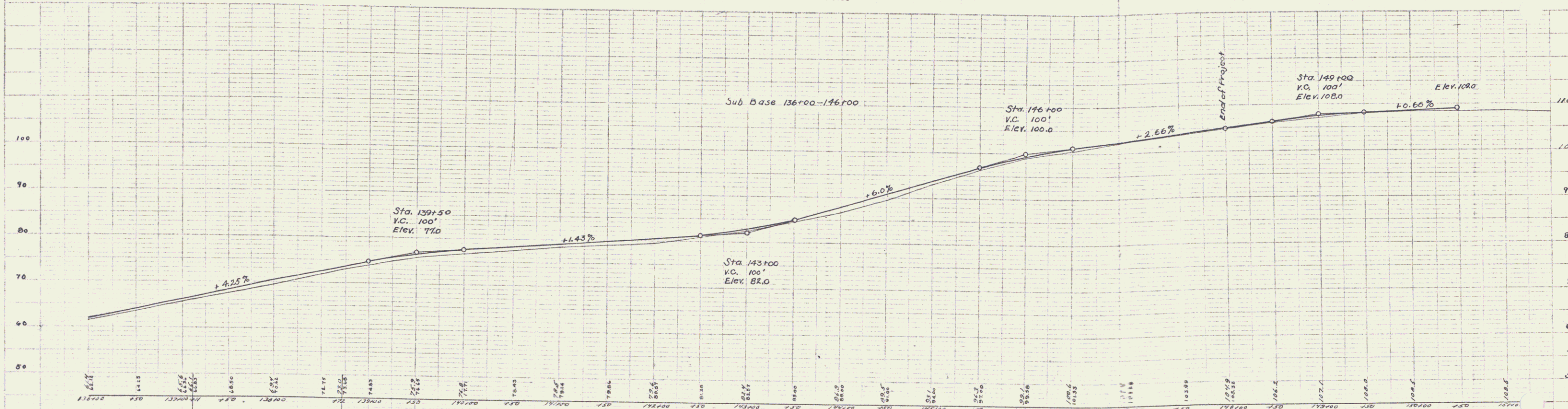
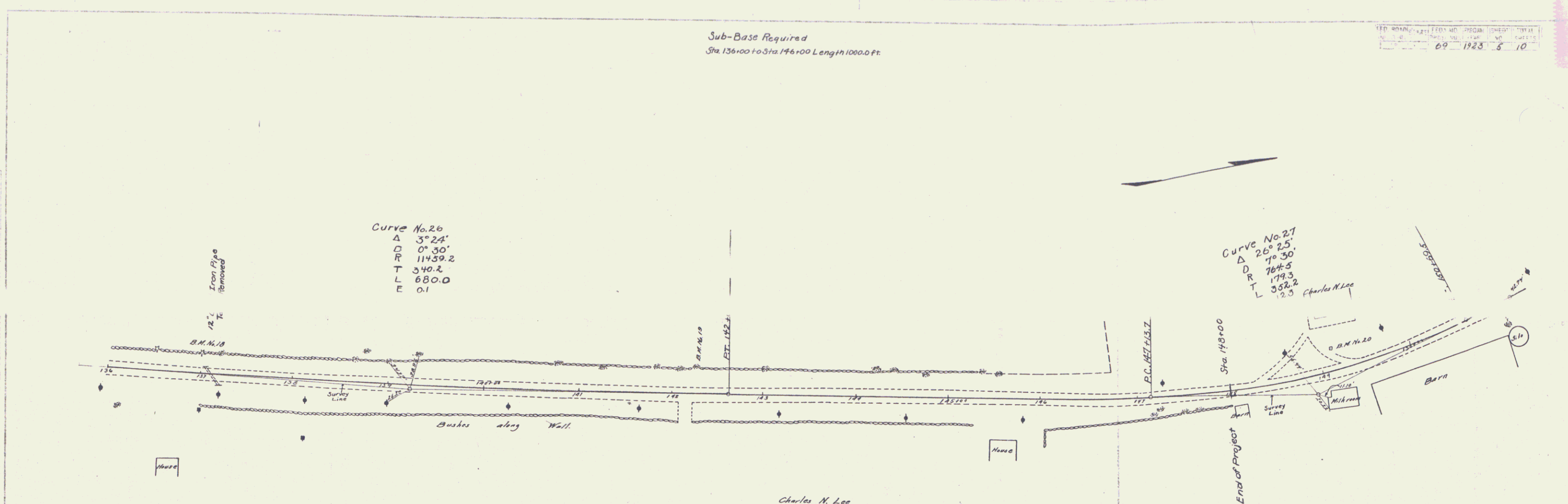
DATE: 09 1923
SHEET: 5 10

R. L. Thompson
Supt. of Highways
P. O. Box 1000
St. Louis, Mo.

PLANS
Scale: 1" = 40'

R. L. Thompson
Supt. of Highways
P. O. Box 1000
St. Louis, Mo.

PLANS
Scale: 1" = 40'



B.M. No. 18 Spike in 12" Pipe Sta 137+00 Elev. 66.72
 B.M. No. 19 Spike in 6" Elm Sta 142+27 Elev. 81.44
 B.M. No. 20 Top of Marble Marking Post Sta 148+10 Elev. 112.83

Sheet 5 of 10
Series F No 69
Filed

4