

Sub-Base Required
Sta 136+00 to Sta 146+00 Length 1000.0 ft

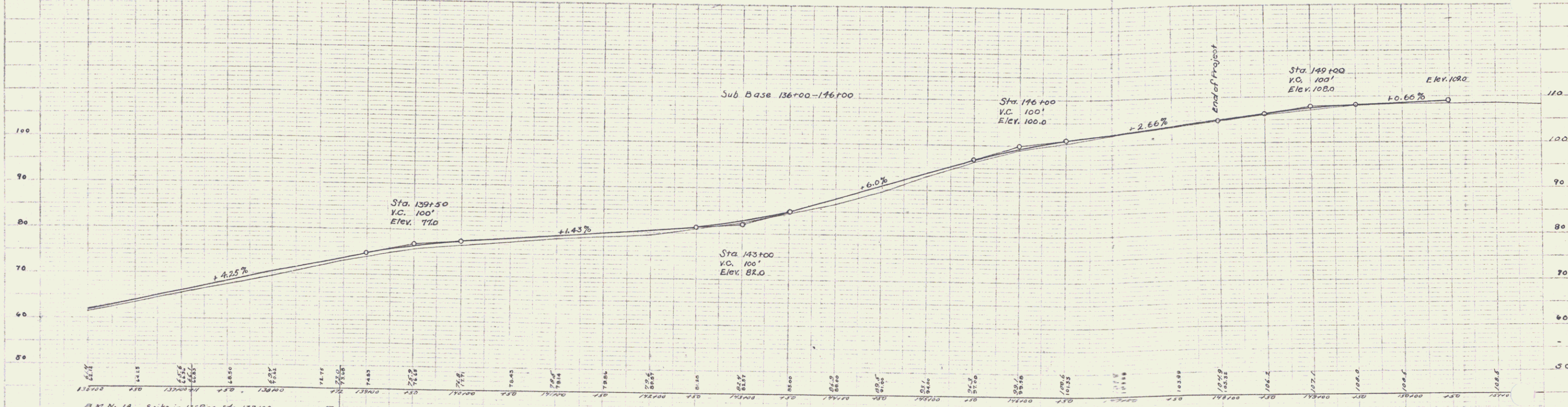
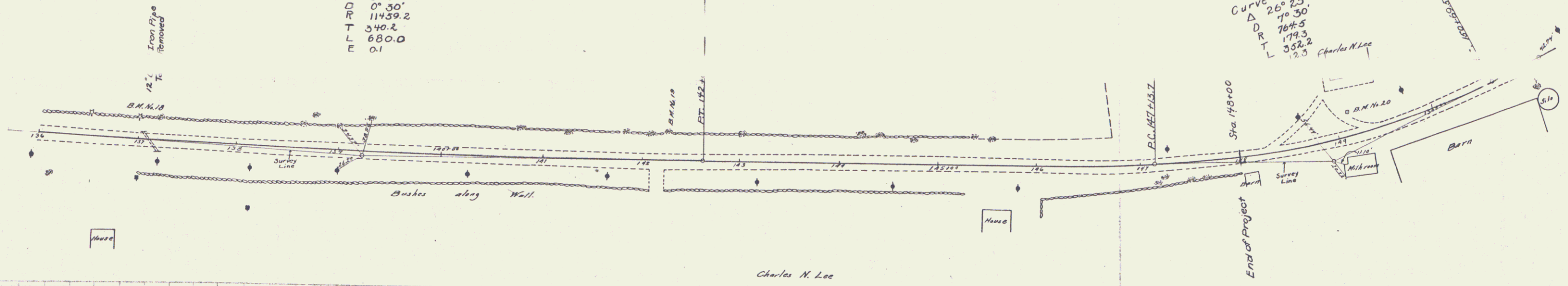
DATE: 09 1923
SHEET: 5 10

R. L. Thompson
Supt. of Highways
P. O. Box 1000
St. Louis, Mo.

R. L. Thompson
Supt. of Highways
P. O. Box 1000
St. Louis, Mo.

Curve No. 26
Δ 3° 24'
D 0° 30'
R 11439.2
T 340.2
L 680.0
E 0.1

Curve No. 27
Δ 26° 25'
D 1° 30'
R 764.5
T 179.3
L 352.2
E 2.0



B.M. No. 18 Spike in 12" Pipe Sta. 137+00 Elev. 66.72
B.M. No. 19 Spike in 6" Elm Sta. 142+27 Elev. 81.44
B.M. No. 20 Top of Marble Marking Post Sta. 148+10 Elev. 112.83

Sheet 5 of 10
Series F No. 69
Filed

4