

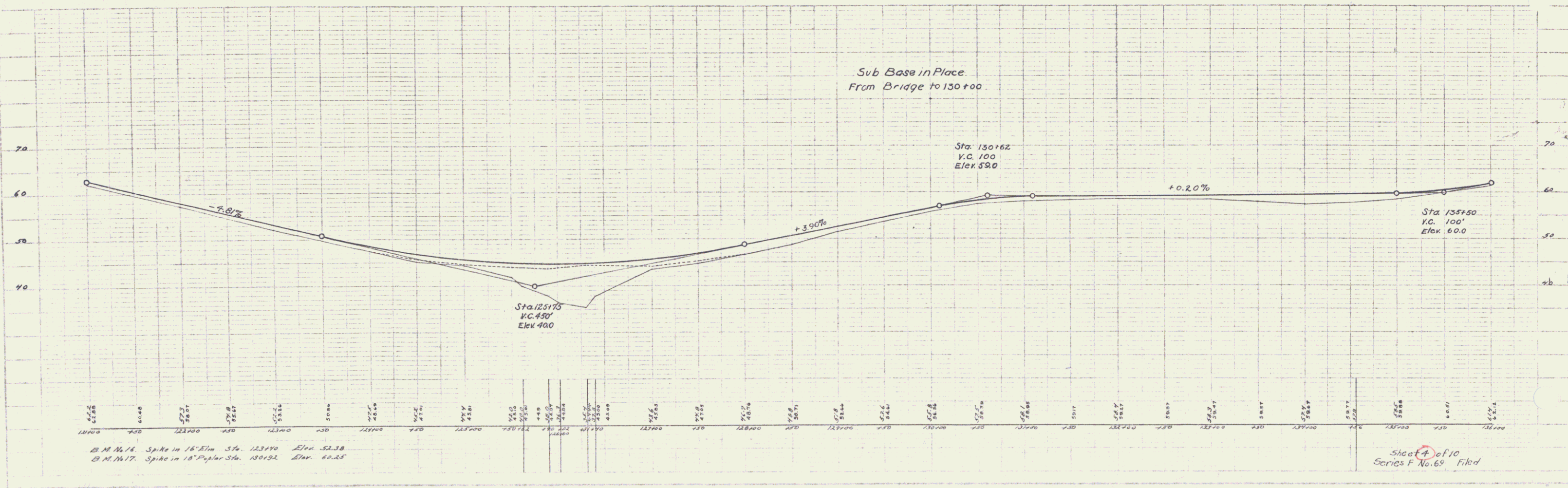
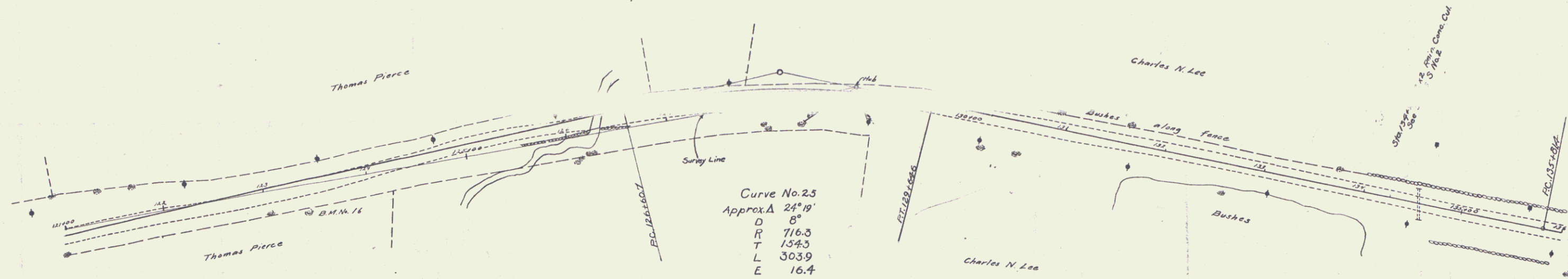
Guard Rail Required
On Left
Sta 125+00 to Sta 126+30 Length 30'
.. 126+40 .. 127+70 .. 36'

On Right
Sta 125+50 to Sta 126+30 Length 80'
.. 126+40 .. 126+72 .. 32'
.. 126+75 .. 127+47 .. 24'

Total this Sheet 512ft

New Culverts Required
Sta. 134+26 2x2' Rein. Con. Culvert
1-2-4 Con. 60 Cuyals
1-2-5 Con. 79 Cuyals
Rein. Steel 158'

Sta 128+35
Bridge - Standard Series S No. 7
10' Span



B.M. 16 Spike in 1 1/2" Elm Sta. 123+90 Elev. 52.38
B.M. 17 Spike in 1 1/2" Poplar Sta. 130+32 Elev. 60.25

Sheet 4 of 10
Series F No. 69 Filed