

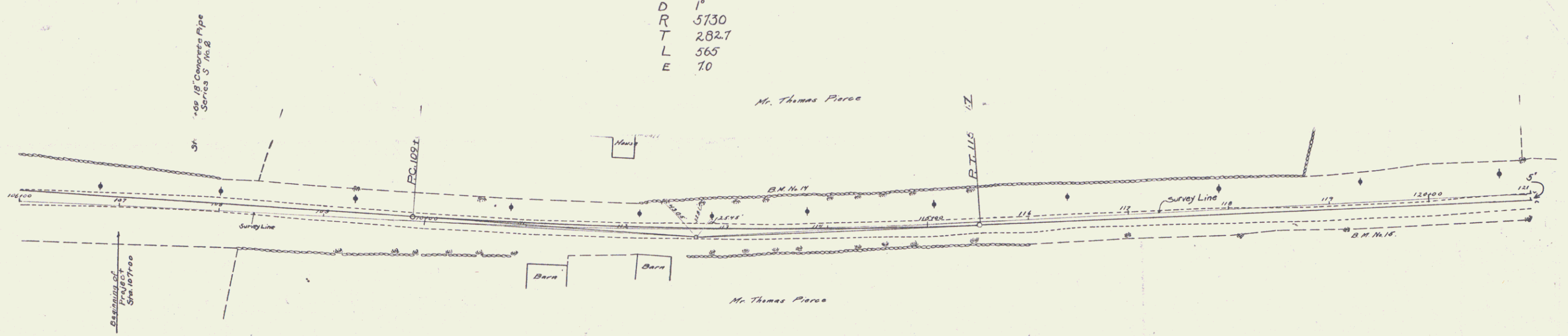
Guard Rail Required  
On Left  
Sta. 107+57 to Sta. 107+81 Length 24'  
On Right  
Sta. 107+57 to Sta. 107+81 Length 24'  
Total This Sheet 48 ft.

Culverts Required  
Sta. 107+09 18" Concrete Pipe  
1-2'-5" Con. 2.5 Cuyab.

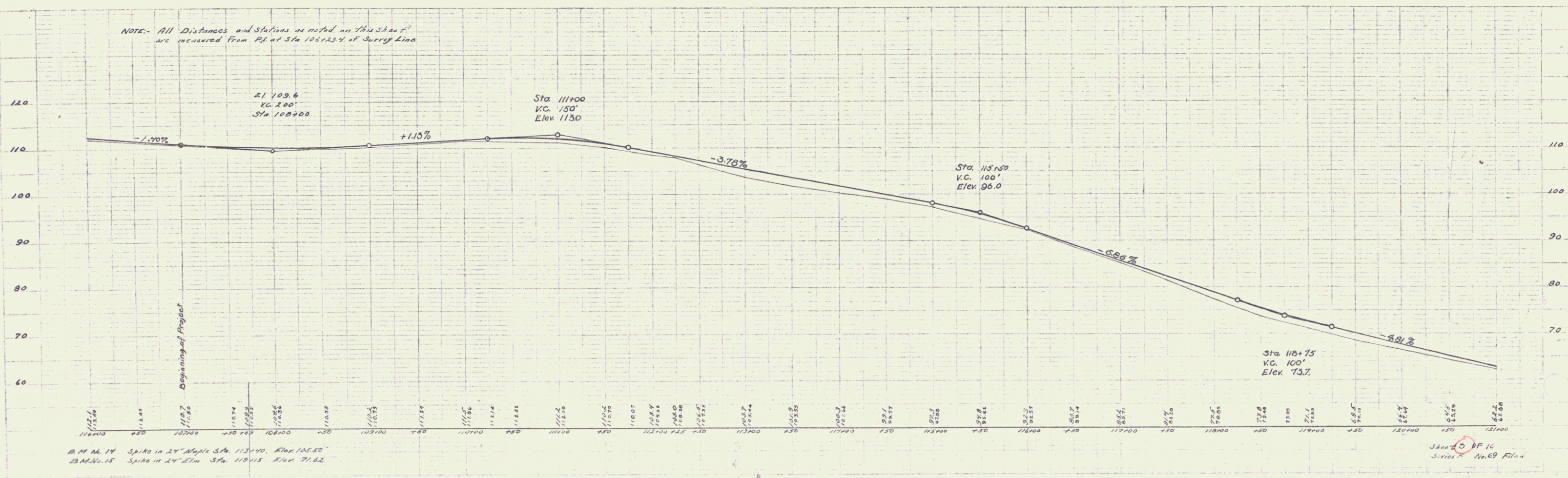
Sub-Base Required  
Sta. 107+70 to Sta. 120+00 Length 1230 ft.

PROJ. NO.	STATE	PROJ. NO.	FISCAL YEAR	SHEET NO.	TOTAL SHEETS
3	VT	69	1923	3	10

Curve No. 24  
 $\Delta$  6°-39'  
 D 1'  
 R 5730  
 T 282.7  
 L 565  
 E 10



NOTE: All Distances and Stations as noted on this sheet are measured from P.I. at Sta. 108+23.7 of Survey Line



P. L. Thompson  
 S. S. Thurston  
 1923

P. L. Thompson  
 S. S. Thurston  
 1923