

INDEX OF SHEETS

SHEET NO.	TITLE	PAGE
2	TYPICAL CROSS-SECTION OF IMPROVEMENT 5-13	
3-20	PLAN & PROFILE	
21	BRIDGE STA. 345+40	
22	355+40	
23	436+24	
24-25	419+04	
26-27	CROSS SECTIONS	

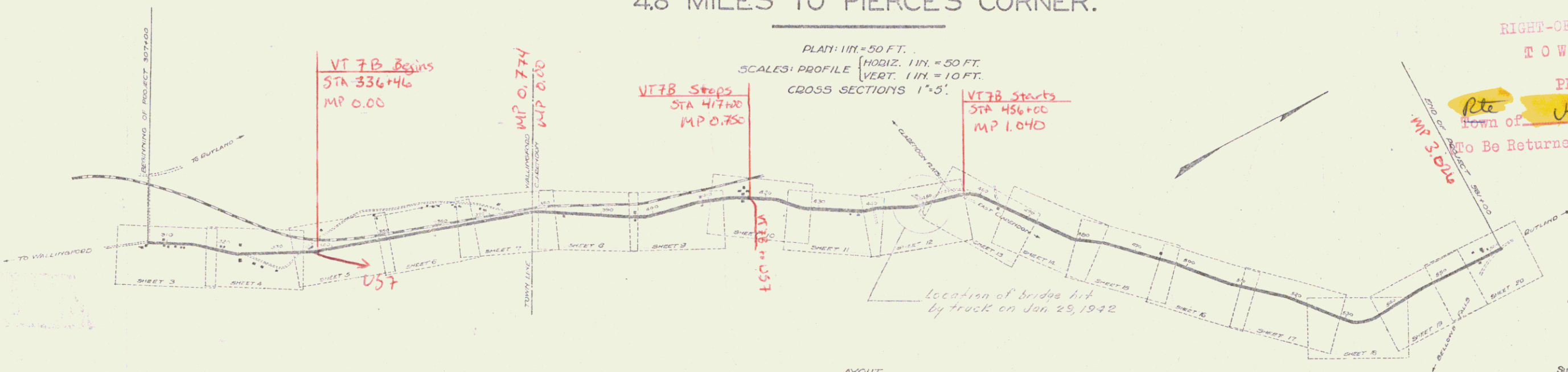
DESIGN NO.	DATE	SCALE	PROJECT	NO.	SHEETS
9	VE	724	1923	1	37

STATE OF VERMONT  
STATE HIGHWAY DEPARTMENT

PLAN AND PROFILE OF PROPOSED  
STATE HIGHWAY  
FEDERAL AID PROJECT

TOWNS OF WALLINGFORD-CLARENDON.

CLARENDON FLATS ROAD  
FROM WALLINGFORD VILLAGE NORTHERLY,  
4.8 MILES TO PIERCE'S CORNER.



RIGHT-OF-WAY DIVISION  
TOWN FILE

PERPETUAL  
Rte. **VT 7B**  
Town of **VT 7B**  
To Be Returned To R.O.W. Division

Pin # 998705

APPROVED \_\_\_\_\_  
NEE ENGINEER  
SUBMITTED BY \_\_\_\_\_  
THE STATE HIGHWAY BOARD  
COMMISSIONER OF HIGHWAYS

Date 1/1/25

RECOMMENDED \_\_\_\_\_  
DISTRICT ENGINEER  
BUREAU OF PUBLIC ROADS  
RECOMMENDED FOR APPROVAL \_\_\_\_\_  
CHIEF ENGINEER  
APPROVED \_\_\_\_\_  
DIRECTOR - BUREAU OF PUBLIC ROADS

Series F - NOT FILED  
SHEET 1 OF 37

CONVENTIONAL SIGNS

COUNTY LINE	— — — — —	GROUND ELEVATION	DATA	LINE
TOWN LINE	— — — — —	GRADE ELEVATION	DATA	LINE
FENCE LINE	— — — — —			
STONE WALL	— — — — —			
UNFENCED PROPERTY	— — — — —			
GUARD RAIL	— — — — —			
TRAVELED WAY	— — — — —			
RAILROAD	— — — — —			
RETAINING WALL	— — — — —			
CENTER LINE	— — — — —			
SURVEY LINE	— — — — —			
CULVERT	— — — — —			
DROP INLET	— — — — —			
TROLLEY POLE	— — — — —			
POWER POLE	— — — — —			
TELEPHONE POLE	— — — — —			
TREES	— — — — —			
HEDGE	— — — — —			

CURVE DATA

DEFLECTION ANGLE	Δ
DEGREE OF CURVE	D.
RADIUS OF CURVE	R.
TANGENT DISTANCE	T.
LENGTH OF CURVE	L.
EXTERNAL DISTANCE	E.
POINT OF INTERSECTION	P. I.
POINT OF CURVE	P. C.
POINT OF TANGENT	P. T.

LAYOUT  
1 INCH = 1000 FEET

INDEX OF SHEETS

- \*1 TITLE
- \*2 Plan & Profile of Road
- \*3 Superstructure Details
- \*4 Abutment Details
- \*5 Original Cross Sections
- \*6 General Plans
- \*7 Plan Showing Bridge Site
- \*8 Contour Plan
- \*9 Profile at affected area taken Feb 2, 1942.
- \*10 Cross Sections taken northerly from bridge Feb 2, 1942.

PLANS WHICH APPLY TO BRIDGE  
IN TOWN OF CLARENDON HIT  
BY TRUCK JAN. 29, 1942.

DIST. # 3 PLANS

GUARD RAIL REQUIRED  
ON LEFT

Sta. 313+08 to 313+12	Length	24ft
" 313+45 - " 316+17	"	72 "

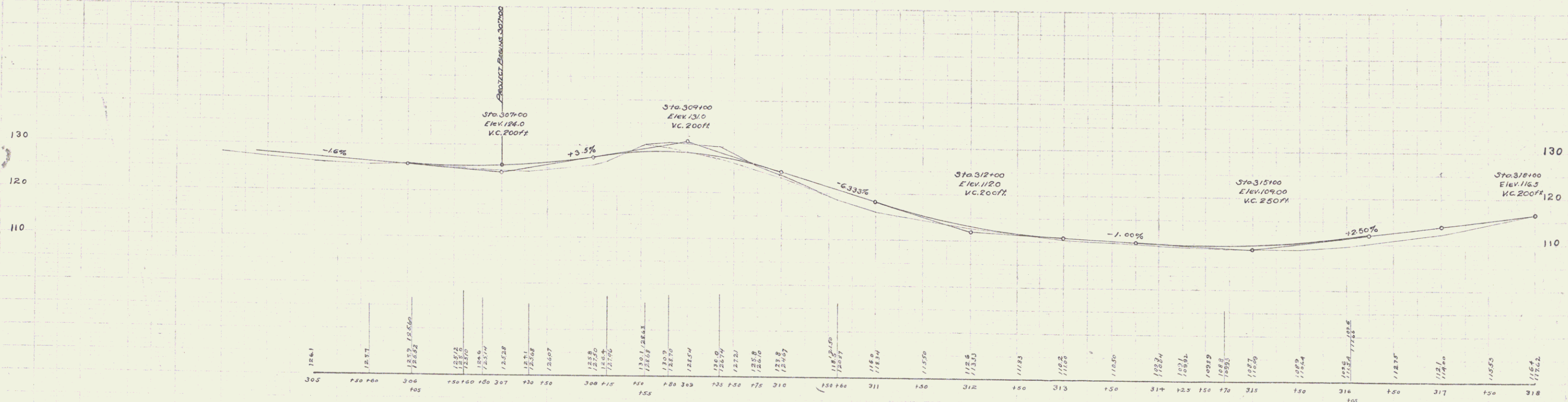
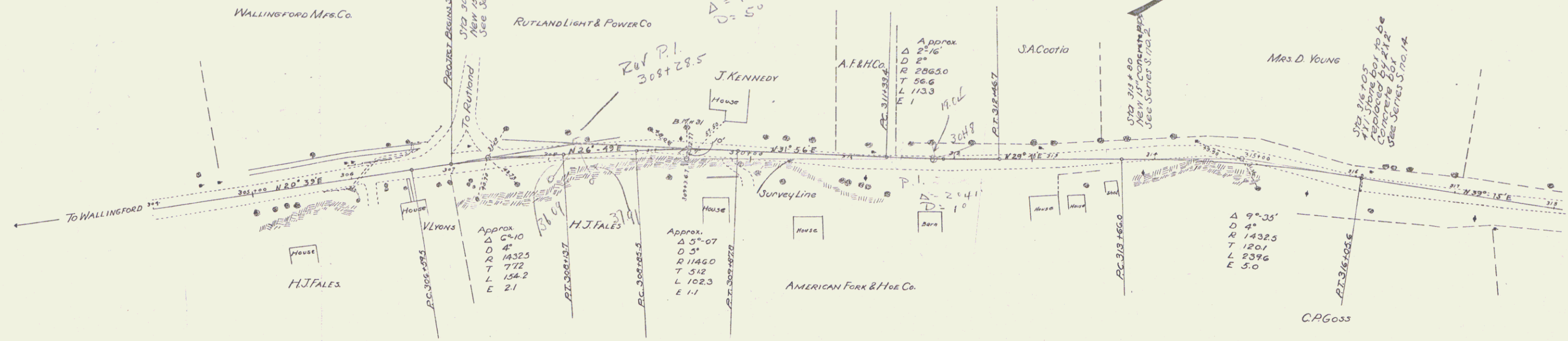
GUARD RAIL REQUIRED  
ON RIGHT

Sta. 306+80 to 310+12	Length	24ft
" 313+08 - " 313+12	"	24 "
" 315+93 - " 316+17	"	24 "

TOTAL THIS SHEET 168ft

NEW CULVERTS REQUIRED

Sta. 307+00	15" CONC. PIPE	50ft
	1-2 1/2" CONC.	180 cu yds.
Sta. 313+80	15" CONC. PIPE	30ft
	1-2 1/2" CONC.	180 cu yds.
Sta. 316+05	2 1/2' REIN. BOX	38ft
	1-2-4" CONC.	85 cu yds.
	1-2 1/2" CONC.	4.3 "
	Rein. Steel	668 lbs.



BM #31 Spike in roots of 24" maples to left of Sta. 307+37 Elev. 129.70

Series No. 75A  
Sheet 5 of 57

GUARD RAIL REQUIRED  
ON LEFT

Sta	Length	Off
310.325+70 to 310.326+58	88 ft	
328+33 - 328+37	24 "	
331+36 - 332+08	160 "	
333+78 - 334+00	22 "	

GUARD RAIL REQUIRED  
ON RIGHT

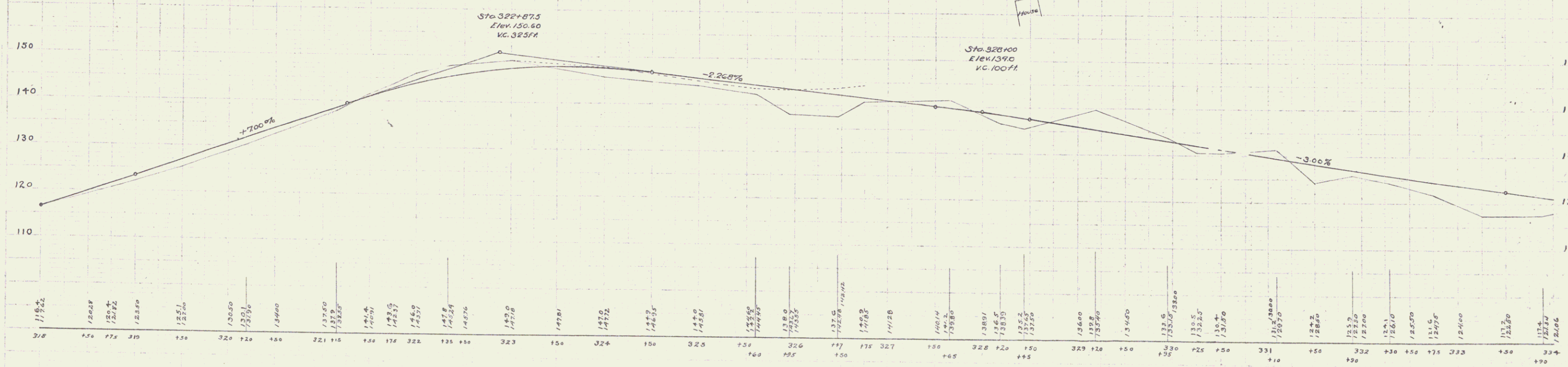
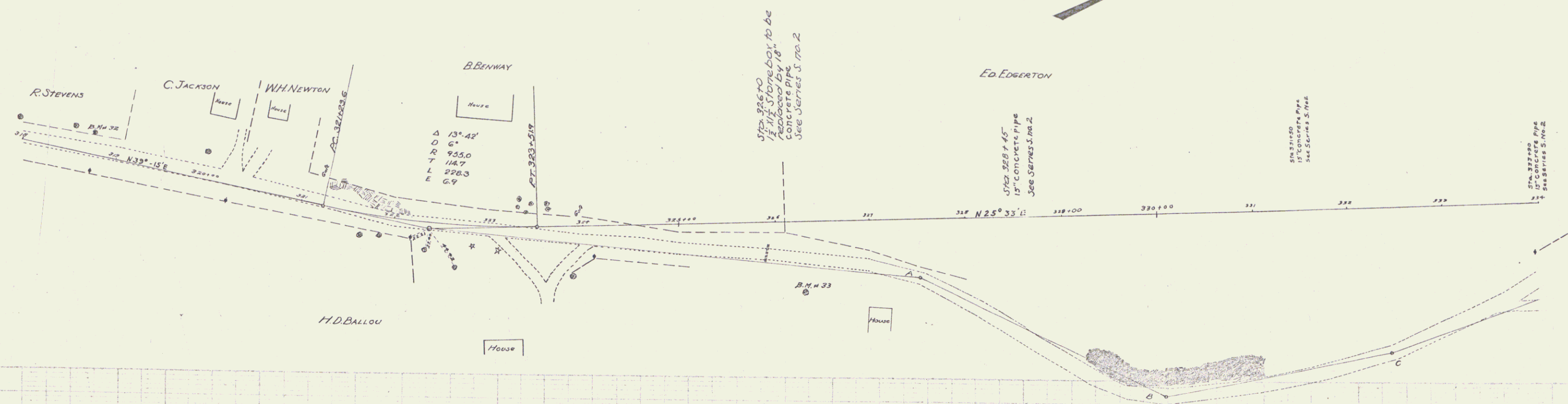
Sta	Length	Off
310.325+72 to 310.326+20	48 ft	
328+33 - 328+37	24 "	
331+38 - 331+62	24 "	
333+78 - 334+00	22 "	

TOTAL THIS SHEET 412 FT.

NEW CULVERTS REQUIRED

310.326+00	18" CONC. PIPE	36 ft
	1-2 1/2" CONC.	2.5 cu yds.
310.328+45	15" CONC. PIPE	30 ft
	1-2 1/2" CONC.	1.8 cu yds.
310.331+50	10" CONC. PIPE	34 ft
	1-2 1/2" CONC.	1.8 cu yds.
310.333+90	15" CONC. PIPE	32 ft
	1-2 1/2" CONC.	1.8 cu yds.

REGISTERED PROFESSIONAL ENGINEER  
STATE OF ILLINOIS  
No. 123456789  
J. W. BROWN



B.M. #32 Spike in roots of 30' Maple 25' to left of sta 318+11 Elev. 118.90  
 B.M. #33 " " " " 24' " 75' to right of Sta. 321+30 Elev. 150.38

**GUARD RAIL REQUIRED ON LEFT**

Sta 334+00 to Sta 334+02	Length 2ft
" 340+00 " " 342+48	" 160 "
" 345+20 " " 346+98	" 176 "
" 348+82 " " 349+38	" 56 "

**NEW CULVERTS REQUIRED**

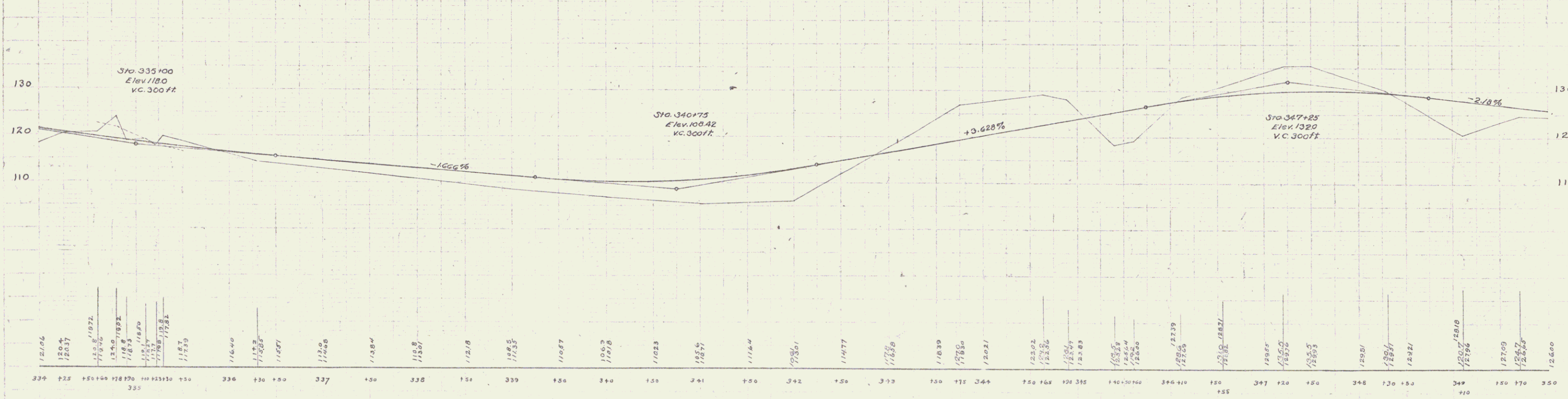
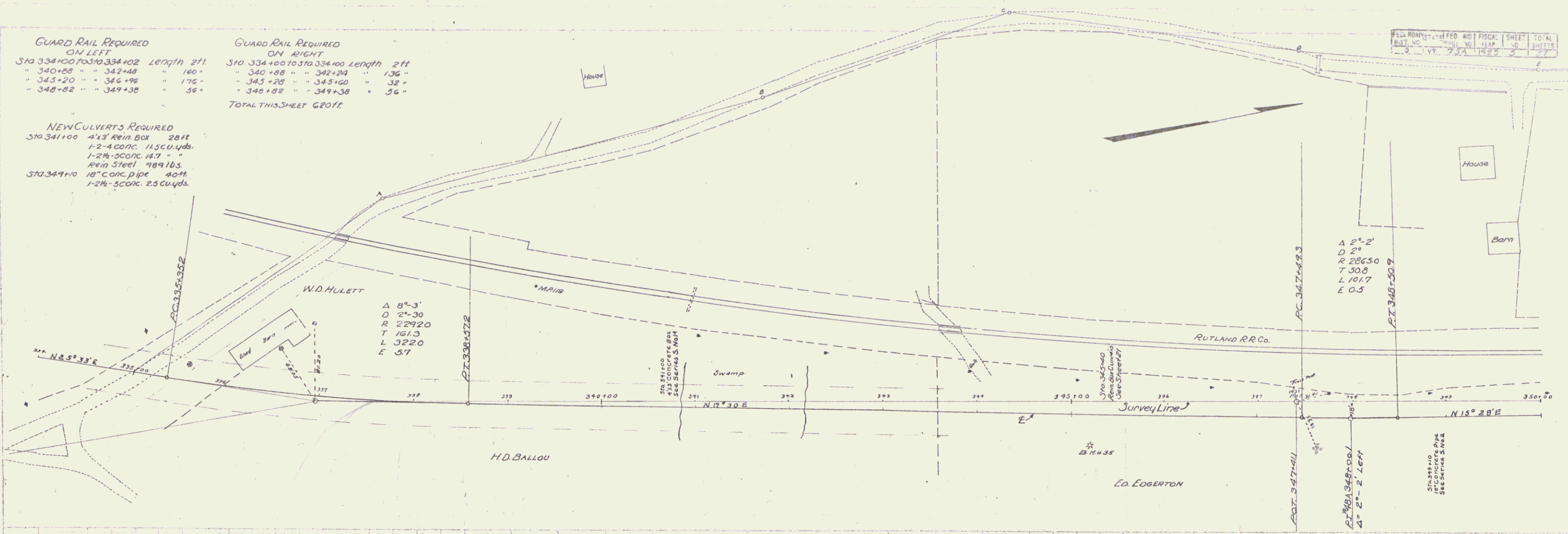
Sta 341+00 4x3 Rein Box 28ft  
 1-2-4 CONC. 14.5 CU YDS  
 1-2-6 CONC. 4.7 " "  
 Rein Steel 989 LBS.  
 Sta 349+10 18" CONC PIPE 40ft  
 1-2-6 CONC. 2.5 CU YDS

**GUARD RAIL REQUIRED ON RIGHT**

Sta 334+00 to Sta 334+00	Length 2ft
" 340+00 " " 342+24	" 136 "
" 345+20 " " 345+60	" 32 "
" 348+82 " " 349+38	" 56 "

TOTAL THIS SHEET GEOFF.

FEED NO.	FEED	ADJ.	FISCAL	SHEET	TOTAL
1	2	3	4	5	6
1	2	3	4	5	6



B.M. 34 Spike in roots of 9" Butternut 175' to right of Sta 334+20 Elev 131.25  
 B.M. 35 " " " " 20' Pine 47' to right of Sta 345+21 Elev 125.23

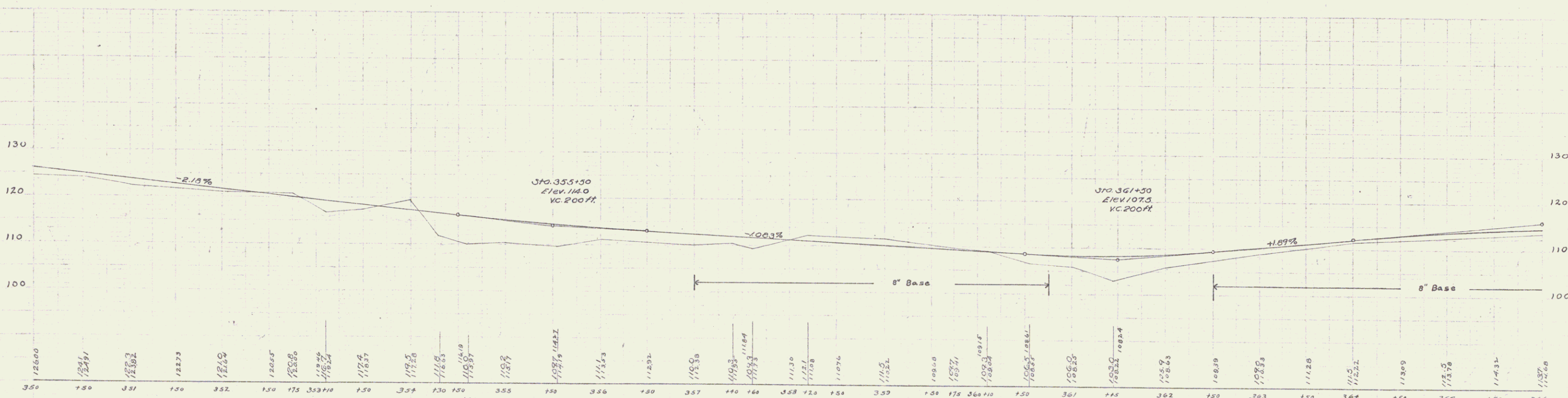
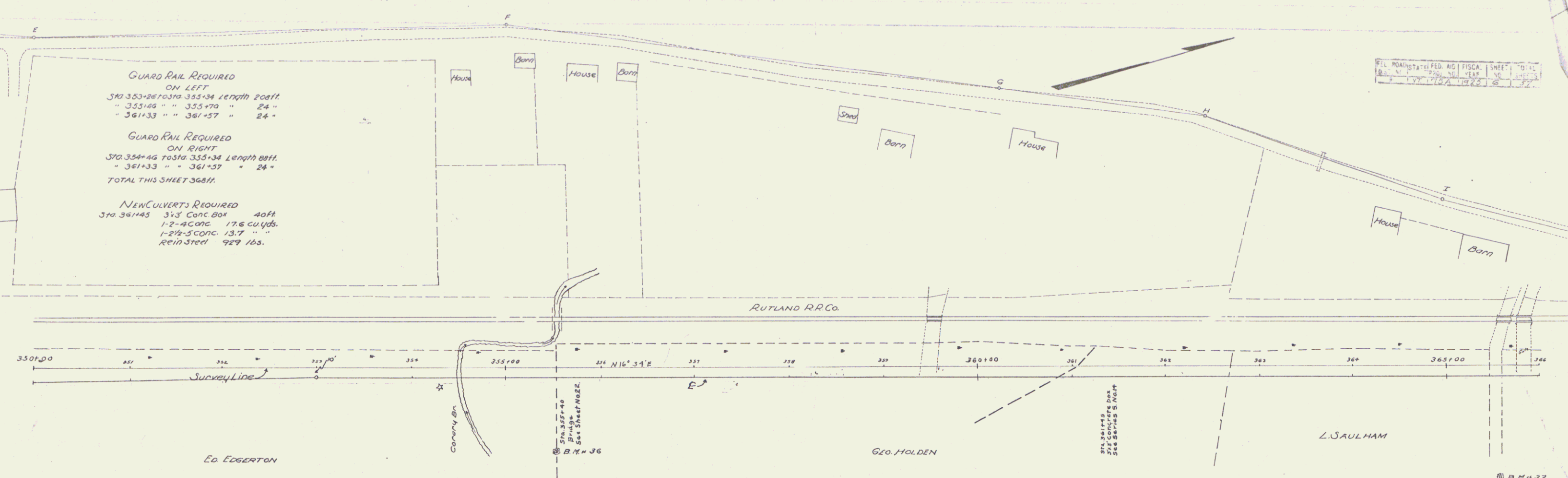
4

ALL POINTS STATED FEET AND DECIMALS SHEET 1 OF 5  
 PLAN AND PROFILE  
 1-25 1-25 1-25 1-25

GUARD RAIL REQUIRED  
 ON LEFT  
 STA 353+26 TO STA 355+34 Length 20ft.  
 " 355+66 " 355+70 " 24"  
 " 361+33 " 361+37 " 24"  
 TOTAL THIS SHEET 368ft.

GUARD RAIL REQUIRED  
 ON RIGHT  
 STA 358+49 TO STA 355+34 Length 8ft.  
 " 361+33 " 361+37 " 24"  
 TOTAL THIS SHEET 368ft.

NEW CULVERTS REQUIRED  
 STA 361+45 3'x3' CONC BOX 40ft  
 1-2'-4" CONC 17.6 cu yds.  
 1-2'-5" CONC 13.7 " "  
 REINSTEEL 929 lbs.



B.M. #36 Spike in roots of 12" Elm 90' to right of Sta 355+55 Elev. 114.22  
 B.M. #37 " " " " 18" Elm 118' to right of Sta 365+57 Elev. 120.90

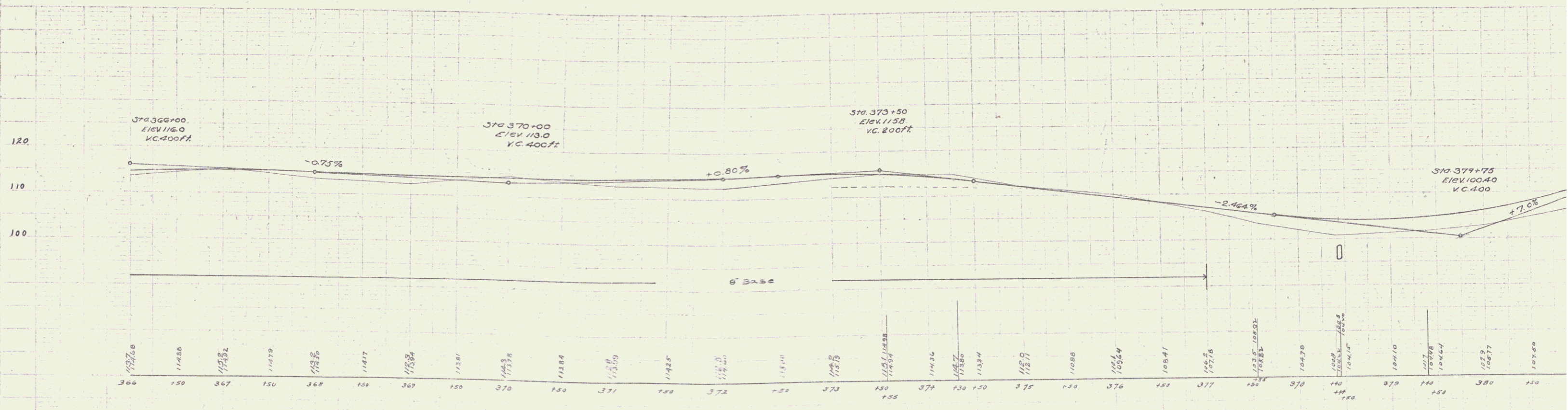
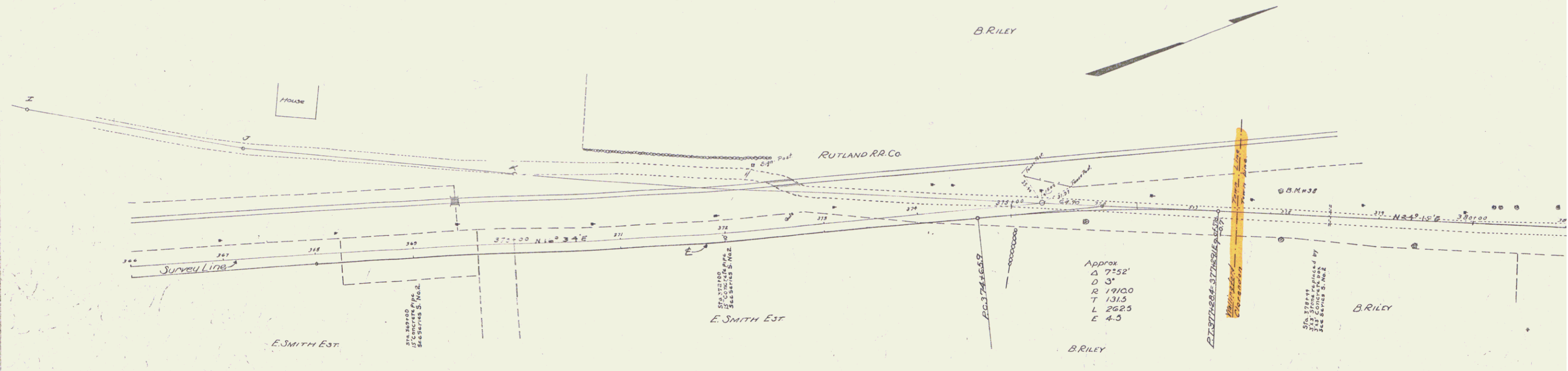
Series P No 75A  
 Sheet 8 of 57

GUARD RAIL REQUIRED  
ON LEFT  
Sta 368+88 to 370+36 1/2 Length 24 ft.  
" 371+88 " " 372+12 " 24 "  
" 377+60 " " 381+00 " 340 "

GUARD RAIL REQUIRED  
ON RIGHT  
Sta 368+88 to 370+36 1/2 Length 24 ft.  
" 371+88 " " 372+12 " 24 "  
" 377+36 " " 381+00 " 364 "  
TOTAL THIS SHEET 800 ft.

NEW CULVERTS REQUIRED  
Sta 369+00 15" Conc Pipe Culvert 30 ft  
Concrete (1-2 1/2-5) 18 cu yd.  
Sta 372+00 15" Conc Pipe Culvert 28 ft  
Concrete (1-2 1/2-5) 18 cu yd.  
Sta 379+44 3' x 3' Reinforced Conc Box  
Conc Cross A (1-2 1/2) 14.1 cu yd  
" " B (1-2 1/2) 13.7 cu yd  
Reinforcing Steel 1121 lbs

FILE NO. 100-100-100-100  
DATE 1-1-1925  
BY J. W. RILEY



BM #38 Spike in roots of 24" Elm 26' to left of Sta 371+91 Elev 101.57

Series F No. 75  
Sheet 6 of 6

6

GUARD RAIL REQUIRED  
ON LEFT  
Sta 381+00 to 381+20 length 20ft  
" 384+28 " " 384+52 " 24 "  
" 394+60 " " 395+48 " 88 "

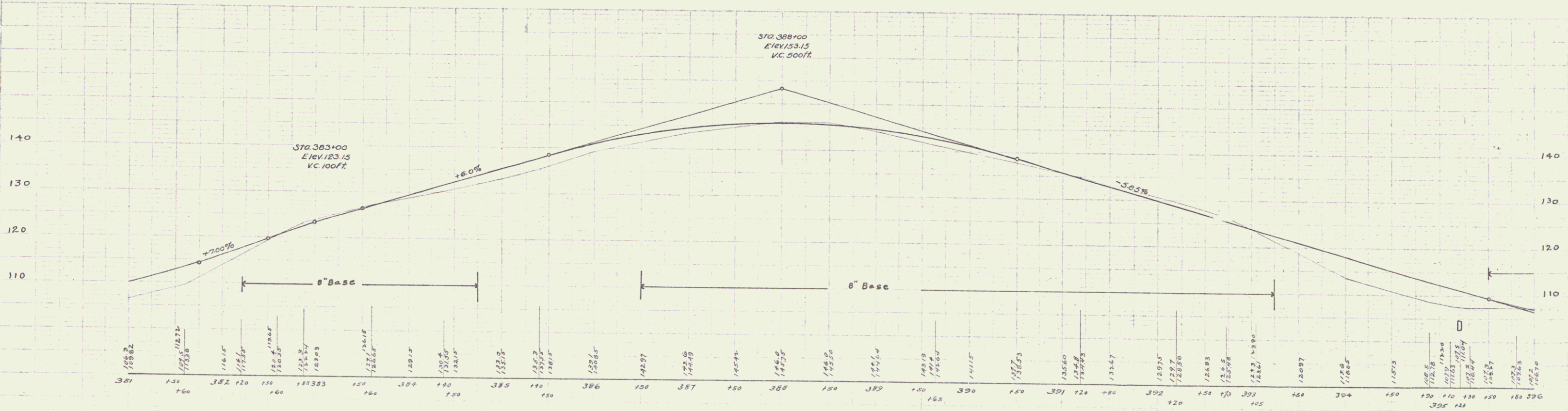
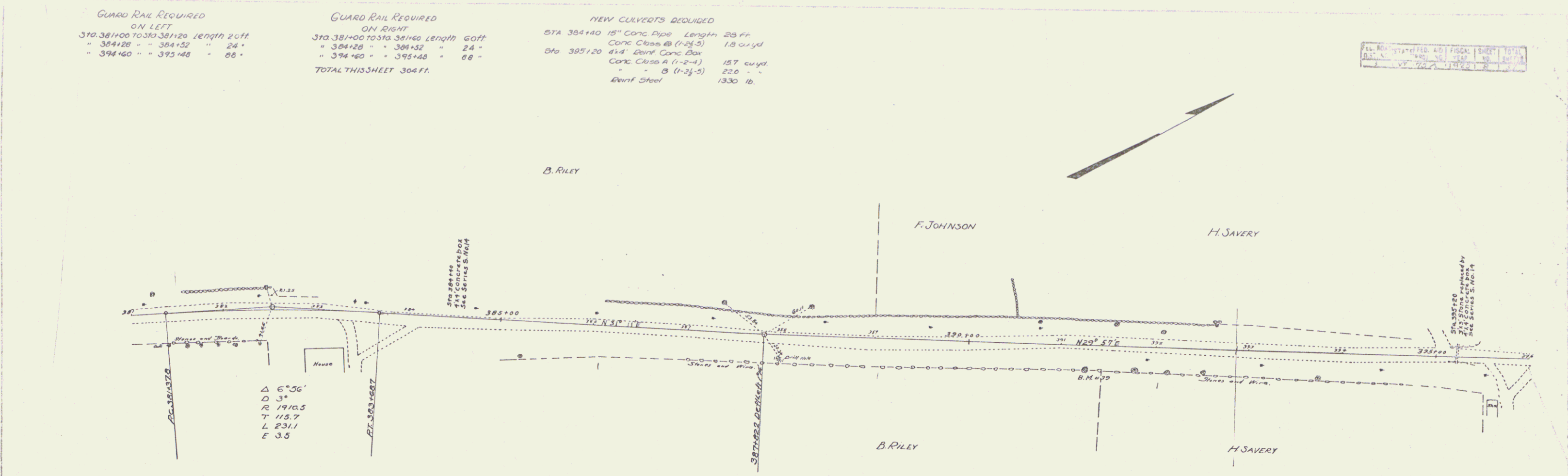
GUARD RAIL REQUIRED  
ON RIGHT  
Sta 381+00 to 381+40 length 40ft  
" 384+28 " " 384+52 " 24 "  
" 394+60 " " 395+48 " 88 "  
TOTAL THIS SHEET 304 FT.

NEW CULVERTS REQUIRED  
Sta 384+40 18" Conc. Pipe Length 28 ft.  
Conc. Class B (1-2-5) 1.8 cu yd  
Sta 395+20 4x4' Rein. Conc. Box  
Conc. Class A (1-2-4) 127 cu yd.  
" " B (1-2-5) 22.0 "  
Rein. Steel 1330 lb.

PL. REVISIONS AND FIELD SHEET  
DATE: 11/25/24  
BY: [Signature]

387  
B.M. Station  
B.M. Station  
1-25  
2-25  
3-25

B.M. Station  
B.M. Station  
1-25  
2-25  
3-25



B.M. #39 Spike in roots of 18" Elm 28' to right Sta 391+27 Elev 137.86

Series F No 73A  
Sheet 4 of 57

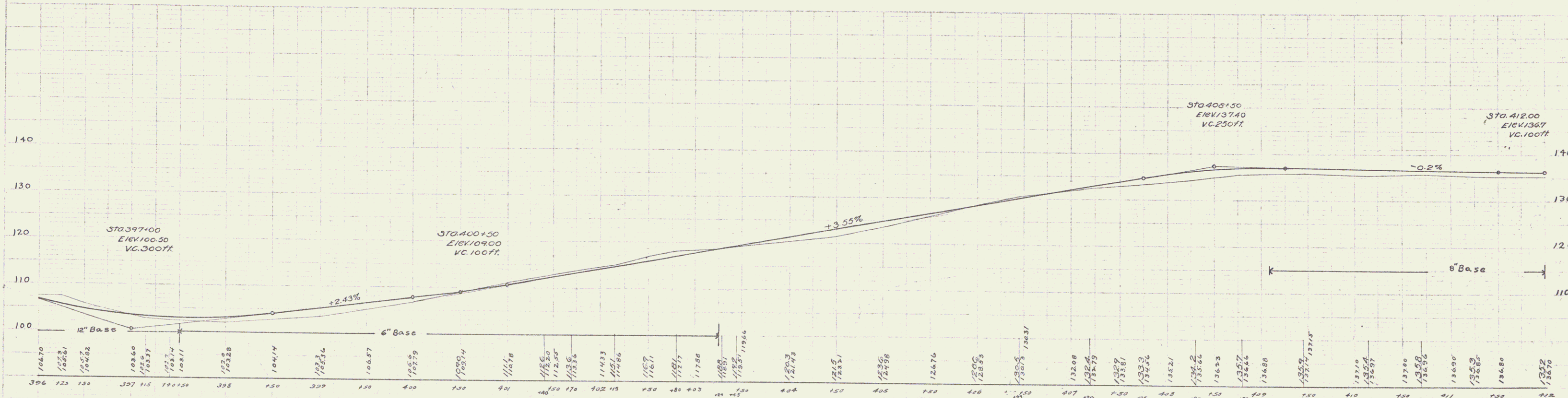
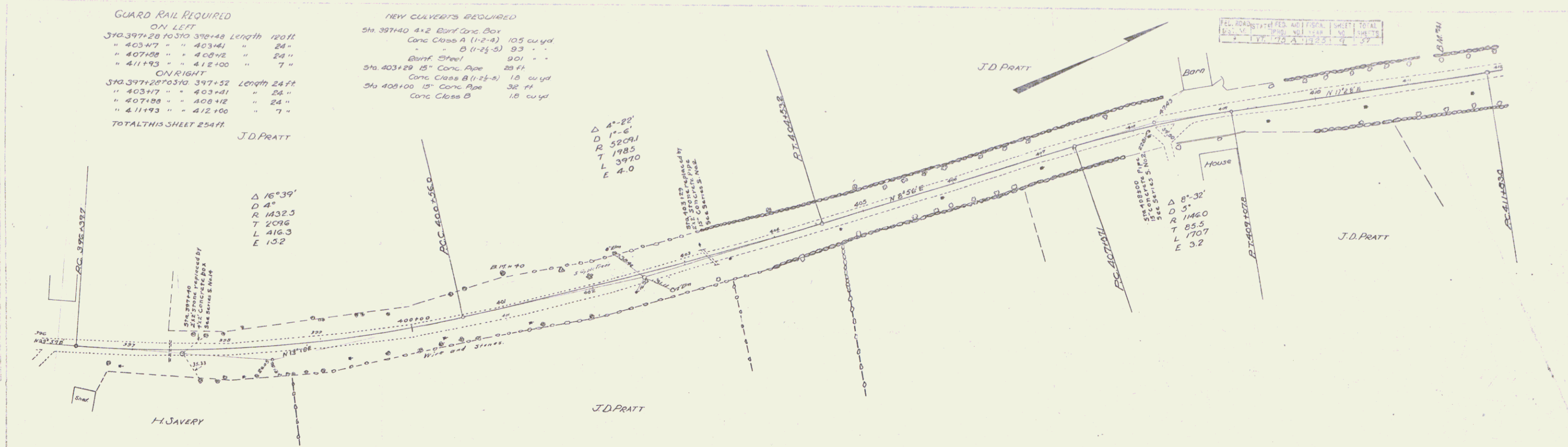
**GUARD RAIL REQUIRED**

**ON LEFT**  
 STA. 397+28 TO STA. 398+48 Length 120 ft  
 " 403+47 " " 403+61 " 24 "  
 " 407+28 " " 408+42 " 24 "  
 " 411+93 " " 412+100 " 7 "  
**ON RIGHT**  
 STA. 397+28 TO STA. 397+52 Length 24 ft  
 " 403+17 " " 403+41 " 24 "  
 " 407+28 " " 408+42 " 24 "  
 " 411+93 " " 412+100 " 7 "  
**TOTAL THIS SHEET 254 FT.**

**NEW CULVERTS REQUIRED**

Sta. 397+40 4x2 Burf Conc. Box  
 Conc. Class A (1-1-2-4) 105 cu yd  
 " " " " (1-2-5) 93 "  
 Burf. Steel 901 "  
 Sta. 403+29 15" Conc. Pipe 28 ft  
 Conc. Class B (1-2-5) 18 cu yd  
 Sta. 408+100 15" Conc. Pipe 32 ft  
 Conc. Class B 18 cu yd

B.M. Spike in roots of 24" Elm 48' to left Sta. 401+03 Elev. 11096  
 B.M. #41 " " " " 16" Maple 14' to left Sta. 411+38 Elev. 13538

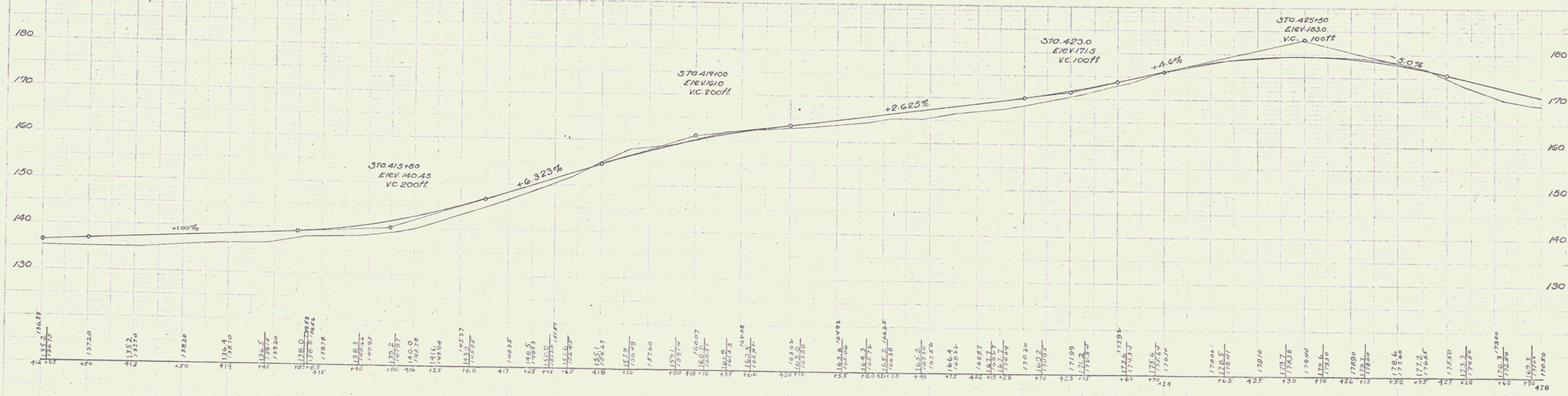
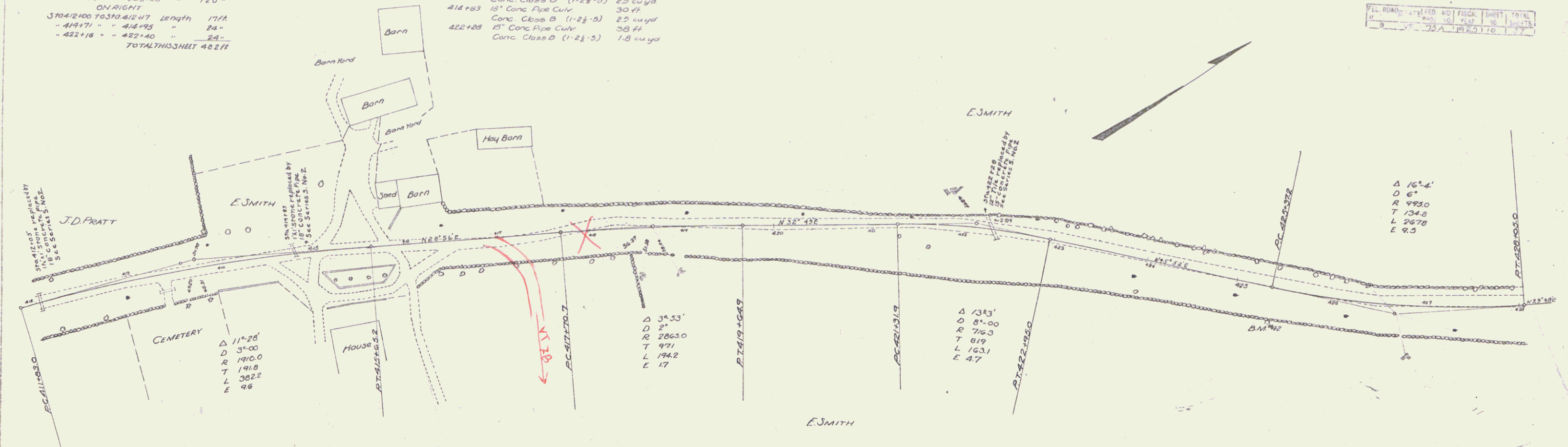


B.M. #0 Spike in roots of 24" Elm 48' to left Sta. 401+03 Elev. 11096  
 B.M. #41 " " " " 16" Maple 14' to left Sta. 411+38 Elev. 13538

GUARD RAIL REQUIRED  
 ON LEFT  
 STA 412+00 TO STA 414+77 Length 277 ft  
 " 421+80 " " 423+00 " 120 "  
 ON RIGHT  
 STA 412+00 TO STA 412+17 Length 17 ft  
 " 419+71 " " 414+95 " 54 "  
 " 422+18 " " 422+40 " 22 "  
 TOTAL THIS SHEET 402 ft

NEW CULVERTS REQUIRED  
 412+05 15" Conc. Pipe Culv. 30 ft  
 Conc. Class B (1-2 1/2-5) 25 cu yd  
 414+53 15" Conc. Pipe Culv. 30 ft  
 Conc. Class B (1-2 1/2-5) 25 cu yd  
 422+28 15" Conc. Pipe Culv. 38 ft  
 Conc. Class B (1-2 1/2-5) 1.8 cu yd

FL. ROAD	STATION	ADJ. ELEV.	ADJ. ELEV.	ADJ. ELEV.	ADJ. ELEV.	TOTAL
9	75A	1820	18	18	18	18

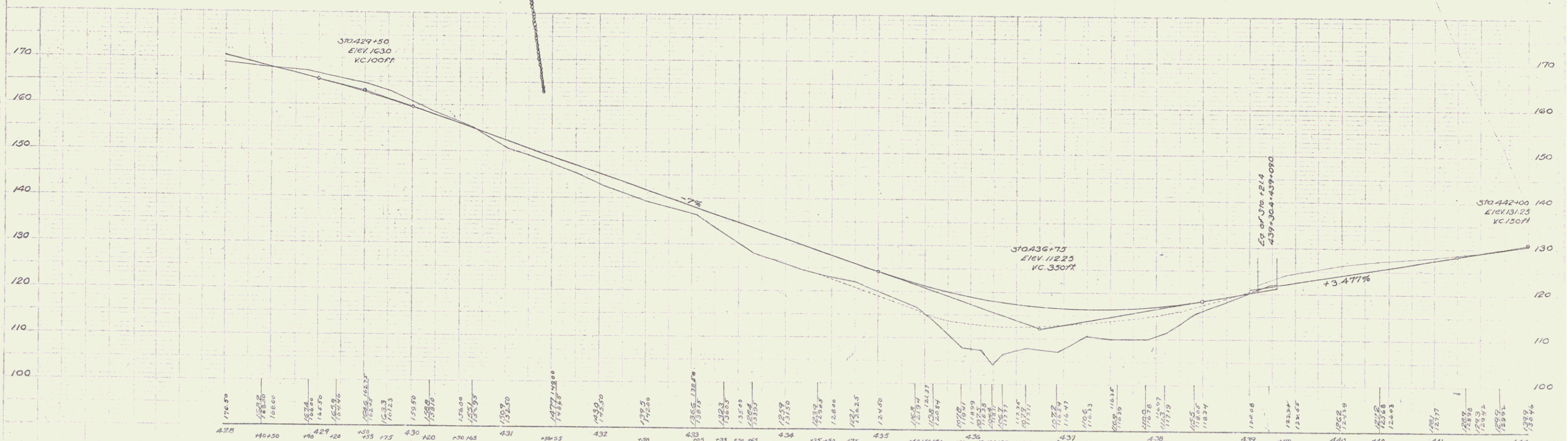
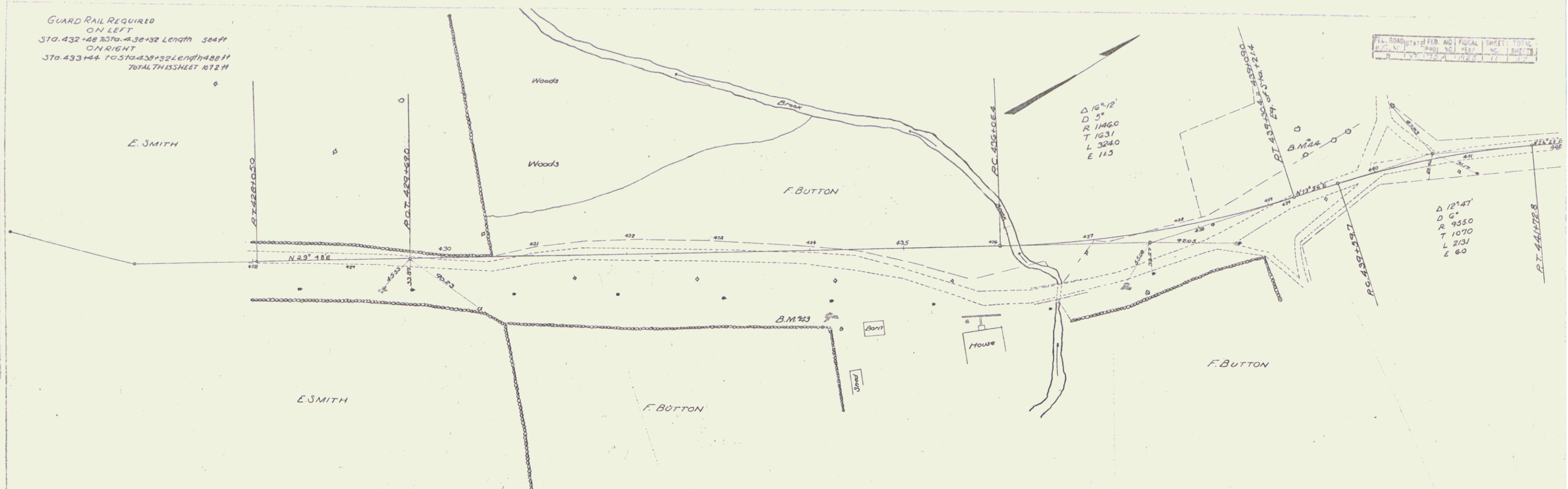


135.2	136.75	137.0	137.5	138.0	138.5	139.0	139.5	140.0	140.5	141.0	141.5	142.0	142.5	143.0	143.5	144.0	144.5	145.0	145.5	146.0	146.5	147.0	147.5	148.0	148.5	149.0	149.5	150.0	150.5	151.0	151.5	152.0	152.5	153.0	153.5	154.0	154.5	155.0	155.5	156.0	156.5	157.0	157.5	158.0	158.5	159.0	159.5	160.0	160.5	161.0	161.5	162.0	162.5	163.0	163.5	164.0	164.5	165.0	165.5	166.0	166.5	167.0	167.5	168.0	168.5	169.0	169.5	170.0	170.5	171.0	171.5	172.0	172.5	173.0	173.5	174.0	174.5	175.0	175.5	176.0	176.5	177.0	177.5	178.0	178.5	179.0	179.5	180.0	180.5	181.0	181.5	182.0	182.5	183.0	183.5	184.0	184.5	185.0	185.5	186.0	186.5	187.0	187.5	188.0	188.5	189.0	189.5	190.0	190.5	191.0	191.5	192.0	192.5	193.0	193.5	194.0	194.5	195.0	195.5	196.0	196.5	197.0	197.5	198.0	198.5	199.0	199.5	200.0
-------	--------	-------	-------	-------	-------	-------	-------	-------	-------	-------	-------	-------	-------	-------	-------	-------	-------	-------	-------	-------	-------	-------	-------	-------	-------	-------	-------	-------	-------	-------	-------	-------	-------	-------	-------	-------	-------	-------	-------	-------	-------	-------	-------	-------	-------	-------	-------	-------	-------	-------	-------	-------	-------	-------	-------	-------	-------	-------	-------	-------	-------	-------	-------	-------	-------	-------	-------	-------	-------	-------	-------	-------	-------	-------	-------	-------	-------	-------	-------	-------	-------	-------	-------	-------	-------	-------	-------	-------	-------	-------	-------	-------	-------	-------	-------	-------	-------	-------	-------	-------	-------	-------	-------	-------	-------	-------	-------	-------	-------	-------	-------	-------	-------	-------	-------	-------	-------	-------	-------	-------	-------	-------	-------	-------	-------	-------	-------	-------

BIT #42 Spike in roots of 14" Elm 36' to right of STA. 423+41 Elev. 181.95

GUARD RAIL REQUIRED  
ON LEFT  
STA. 432+48 TO STA. 438+32 Length 584ft  
ON RIGHT  
STA. 433+44 TO STA. 439+32 Length 588ft  
TOTAL THIS SHEET 1172ft

PL.	ROAD	STATE	FED.	AND	FEDERAL	TRUST	TOTAL
1	1	1	1	1	1	1	1
1	1	1	1	1	1	1	1



428	176.50	429	175.50	430	174.50	431	173.50	432	172.50	433	171.50	434	170.50	435	169.50	436	168.50	437	167.50	438	166.50	439	165.50	440	164.50	441	163.50	442	162.50
-----	--------	-----	--------	-----	--------	-----	--------	-----	--------	-----	--------	-----	--------	-----	--------	-----	--------	-----	--------	-----	--------	-----	--------	-----	--------	-----	--------	-----	--------

B.M. #43 Drill hole in ledge 71' to right of sta 434+18 Elev. 120.05  
 B.M. #44 Spike in roof of 42' Maple 40' to left of sta 431+35 Elev. 124.94

Sheet 11 of 37

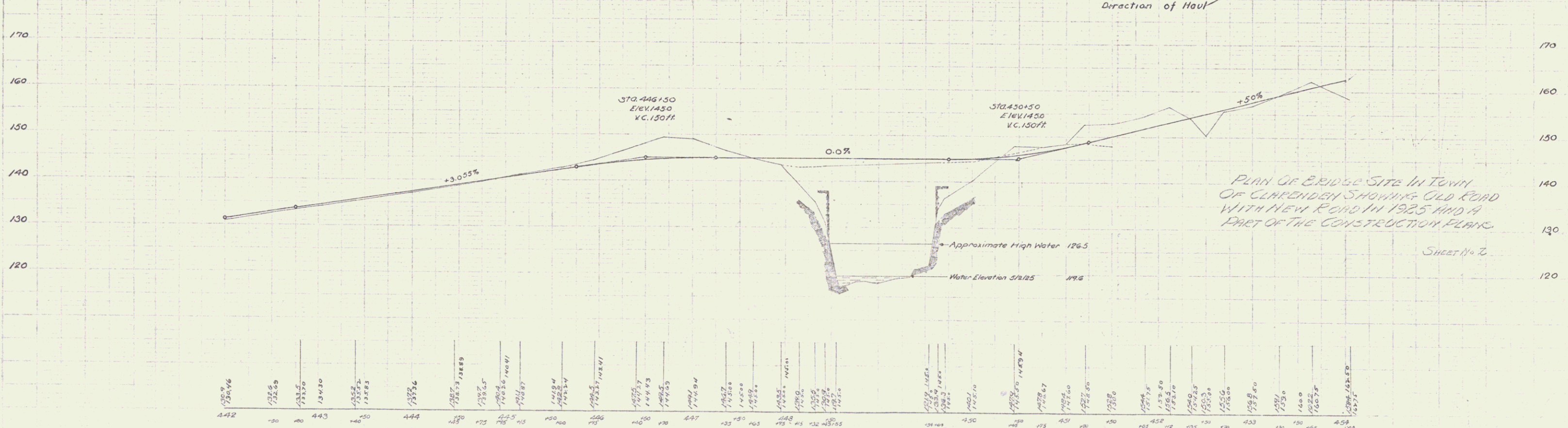
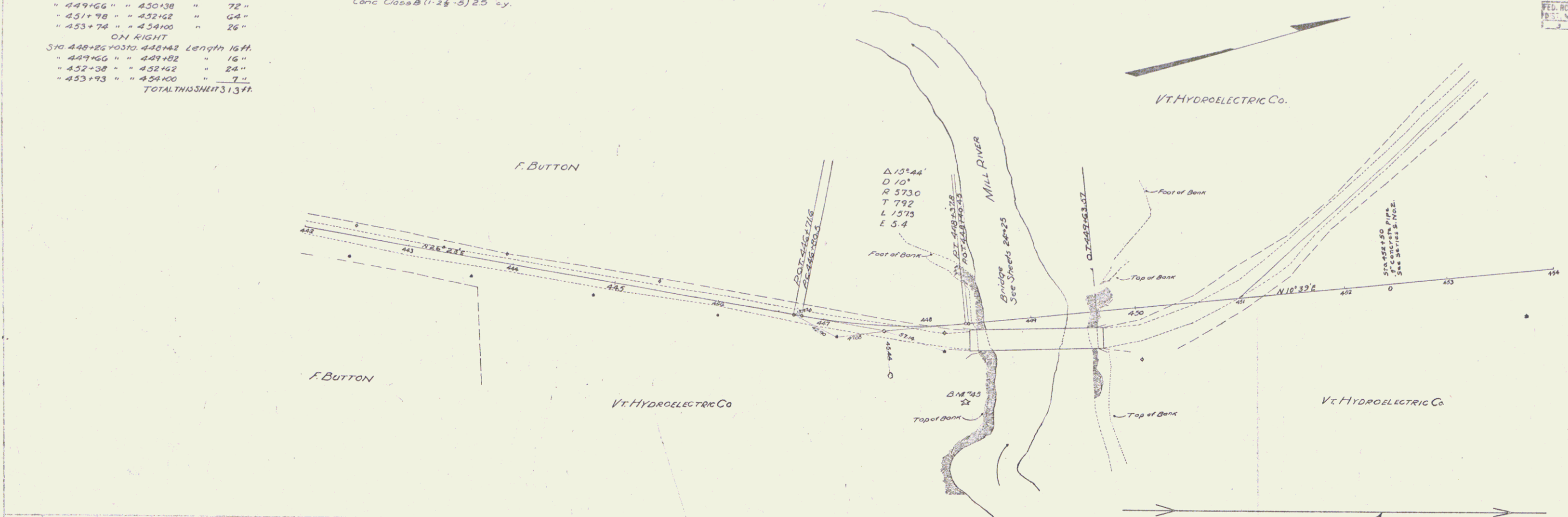
**GUARD RAIL REQUIRED**  
**ON LEFT**  
 370+47.5 to 370+32.2 448+42 Length 66 ft.  
 " 449+66 " " 450+38 " " 72 "  
 " 451+98 " " 452+62 " " 64 "  
 " 453+76 " " 454+00 " " 26 "  
**ON RIGHT**  
 370+448+25 to 370+448+42 Length 16 ft.  
 " 449+66 " " 449+82 " " 16 "  
 " 452+38 " " 452+42 " " 24 "  
 " 453+93 " " 454+00 " " 7 "  
**TOTAL THIS SHEET 137 ft.**

**NEW CULVERTS REQUIRED**  
 452+50 18" Conc. Pipe Culv. 30 ft.  
 Conc. Class @ (1-2 1/2 - 2) 25 "y.

FED. ROAD DIST. NO. 1001 SHEET TOTAL  
 VT. 77A 1924 12

R.M. STANLEY  
 8-25

R.M. STANLEY  
 8-25  
 A.C. BROOKLYN

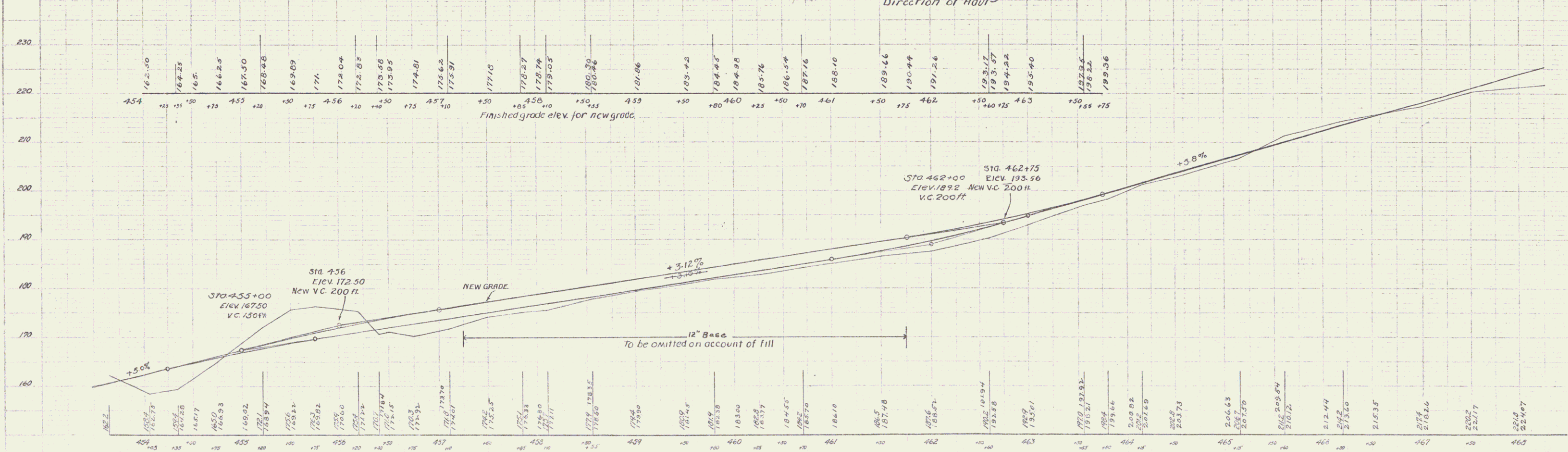
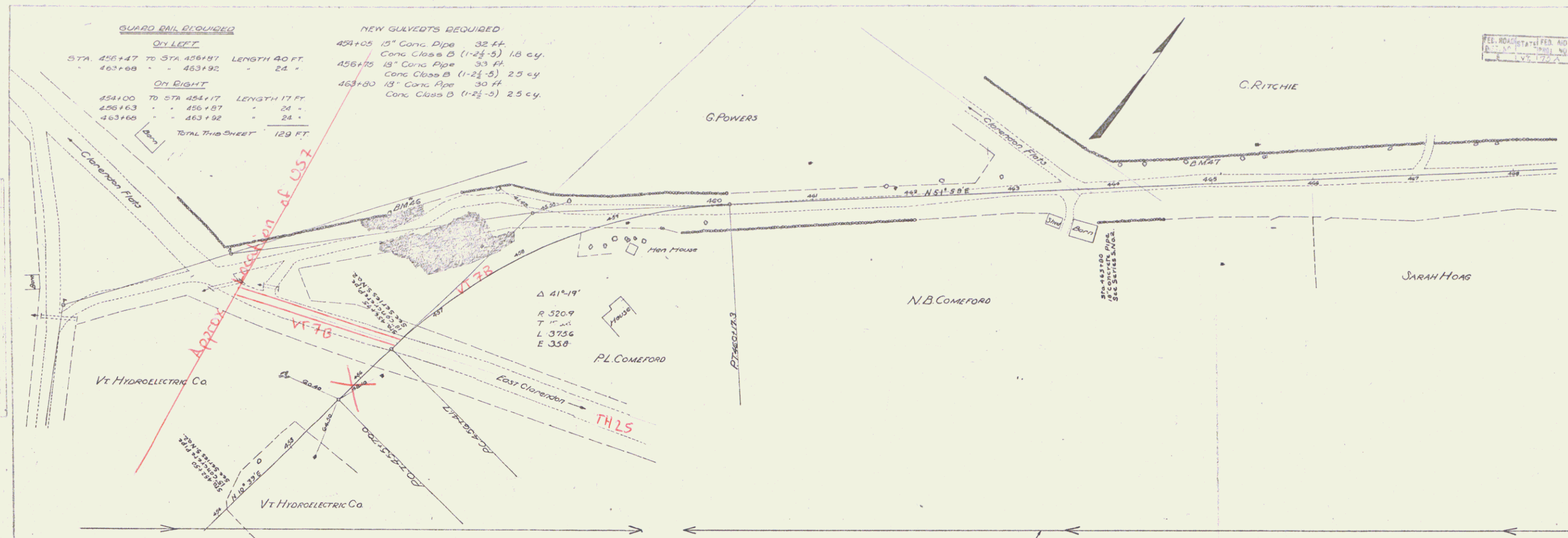


BM # 45 Spike in roots of 1st Hemlock just so of bridge 60' to right Elev. 144.32

**GUARD RAIL REQUIRED**  
**ON LEFT**  
 STA. 456+47 TO STA. 456+91 LENGTH 40 FT.  
 456+47 - 456+91 - 24 -  
**ON RIGHT**  
 454+00 TO STA. 454+17 LENGTH 17 FT.  
 454+00 - 454+17 - 24 -  
 463+00 - 463+92 - 24 -  
**TOTAL THIS SHEET 129 FT.**

**NEW GULCHETS REQUIRED**  
 459+05 15" Conc. Pipe 32 ft.  
 Conc. Class B (1-2 1/2 - 5) 1.8 cy.  
 456+75 18" Conc. Pipe 33 ft.  
 Conc. Class B (1-2 1/2 - 5) 2.3 cy.  
 463+80 18" Conc. Pipe 30 ft.  
 Conc. Class B (1-2 1/2 - 5) 2.3 cy.

SEE ROAD MAP FOR FEED AND FISCAL SHEET TOTAL  
 SHEET NO. 13A NO. 1 SHEETS  
 L.V. 172A TH 22 13 177



BM #46 Spike in roots of 12" Elm 102' to the left of Sta 457+00 Elev. 173.10  
 BM #47 " " " " 14" Elm 225' " " " " 465+75 Elev. 206.76

Series F No. 75A  
 Sheet 13 of 57



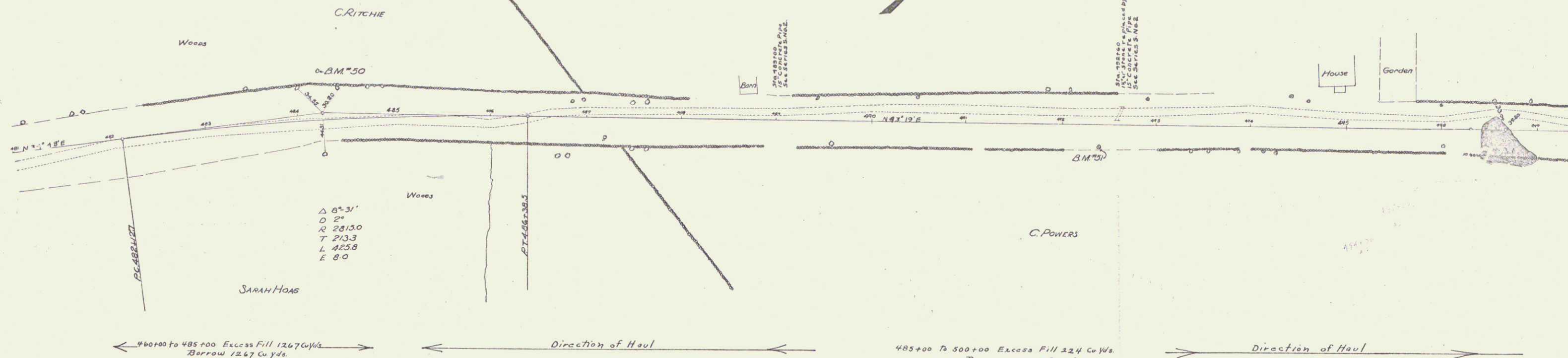
**GUMBO PAIL REQUIRED**  
**ON LEFT**  
 STA 489+88 TO STA. 489+12 LENGTH 24 FT.  
 " 492+48 " " 492+12 " 24 "

**ON RIGHT**  
 STA. 489+88 TO STA. 489+12 LENGTH 24 FT.  
 " 492+48 " " 492+12 " 24 "

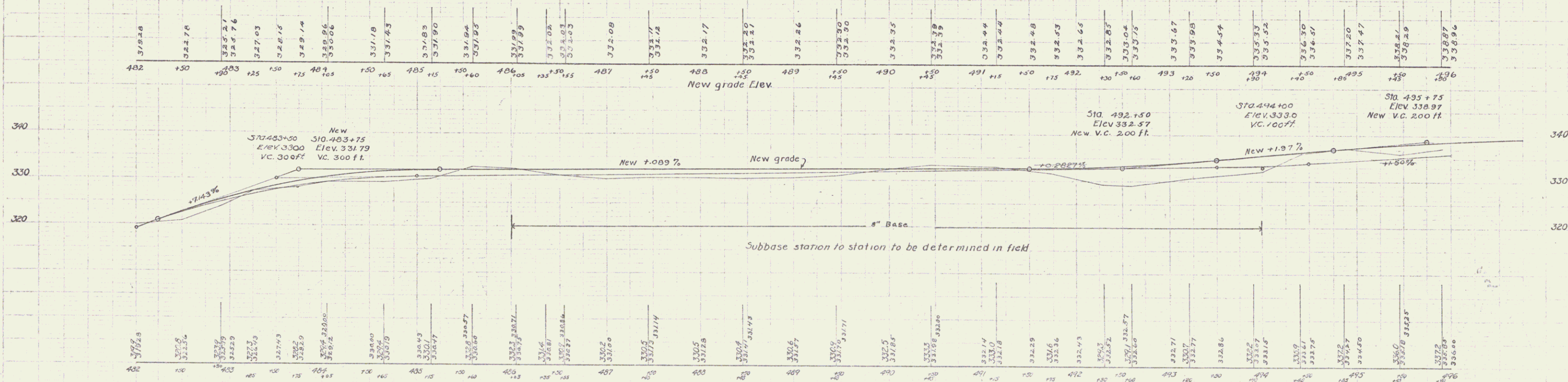
TOTAL THIS SHEET 96 FT.

**NEW CULVERTS REQUIRED**  
 489+00 15" Conc Pipe 30 ft.  
 Conc Class B (1-2-3) 18 cy.  
 492+60 15" Conc Pipe 32  
 Conc Class B (1-2-3) 18 cy.

FIELD BOOK STATE FED. AG. FISCA. SHEET  
 DIST. NO. 11734 1142 12

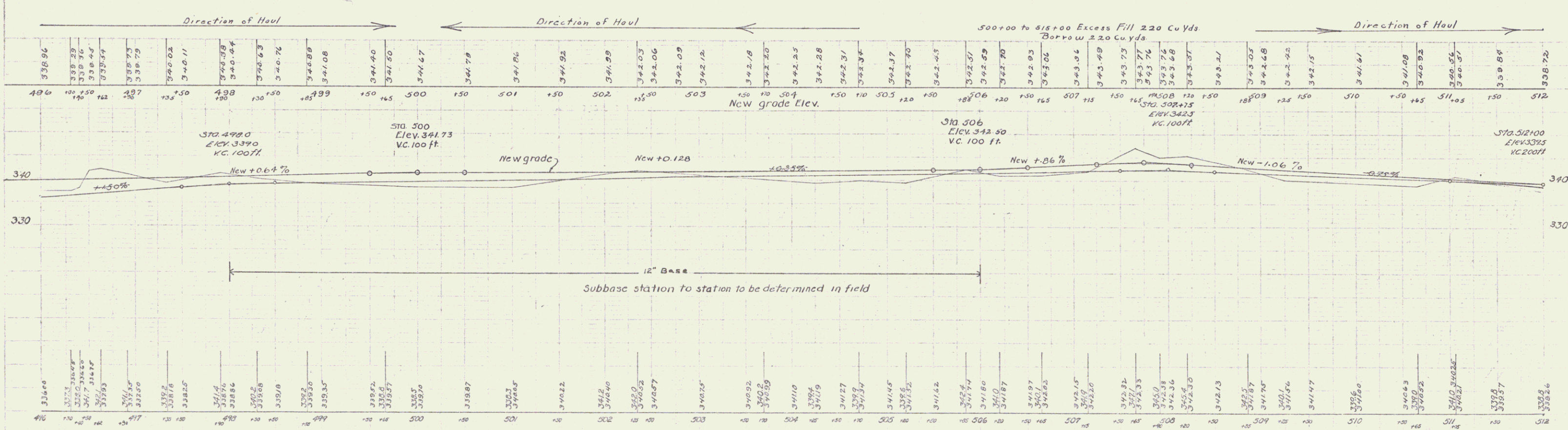
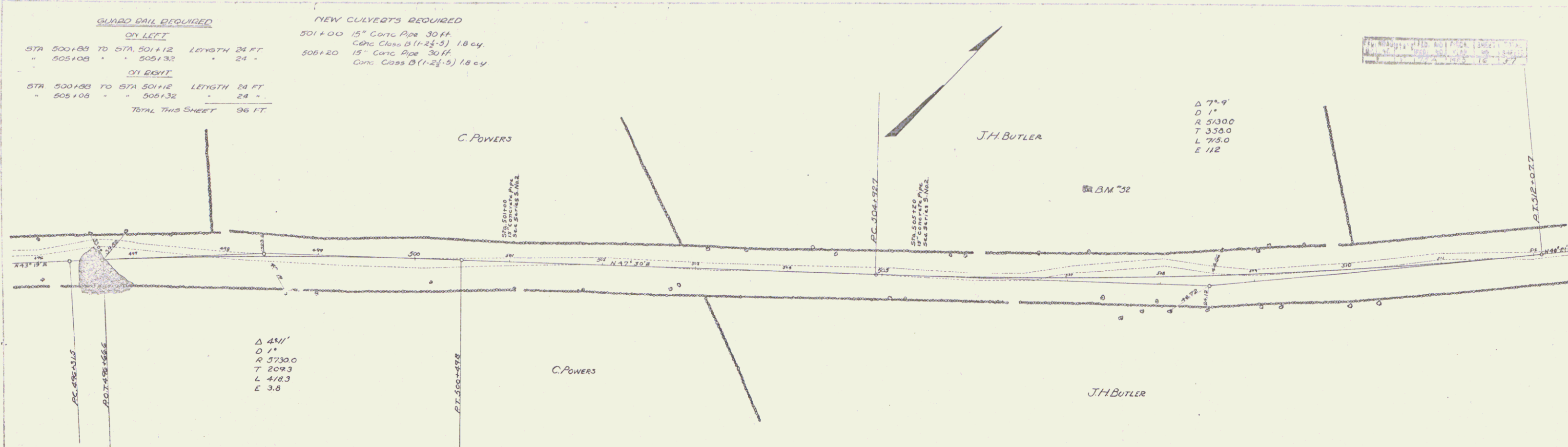


← 480+00 to 485+00 Excess Fill 1267 Cu Yds. Borrow 1267 Cu Yds.      Direction of Haul      485+00 to 500+00 Excess Fill 1224 Cu Yds. Borrow 224 Cu Yds.      Direction of Haul      →



BM 50 Spike in roots of 20' Maple 43' to left sta. 484+27 Elev. 321.50  
 BM 51 Spike in roots of 12' Elm 24' to right sta. 492+38 Elev. 310.76

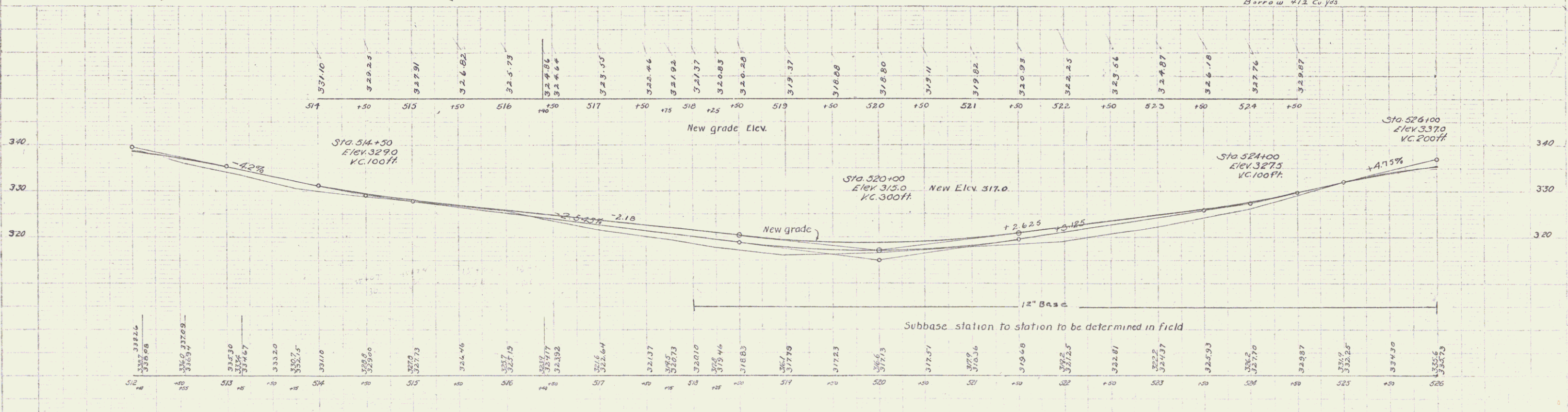
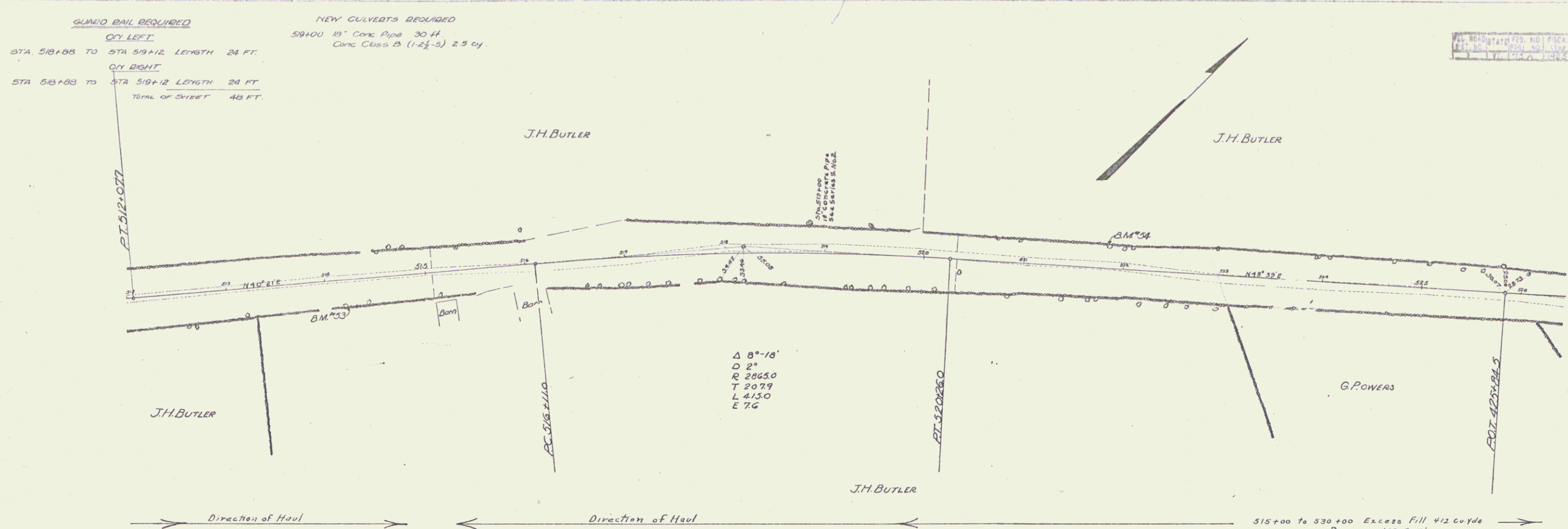
RITCHIE & SONS  
 CIVIL ENGINEERS  
 11734 1142 12



BM #52 Rock in field 100' to left of sta. 507+13 Elev. 341.70

Series F No 75A  
 Sheet 16 of 57

15



B.M. 53  
 12" Ash 22' to left of Sta. 514+13  
 Elev. 331.26

B.M. 54  
 14" Ash 22' to left of Sta. 521+36  
 Elev. 318.45

B.M. 53 Spike in roots of 12" Butternut 25' to right of Sta. 514+13 Elev. 331.26  
 B.M. 54 " " " " 14" Ash 22' to left of Sta. 521+36 Elev. 318.45

STATE OF OHIO  
 ROAD DISTRICT NO. 1  
 SHEET NO. 16

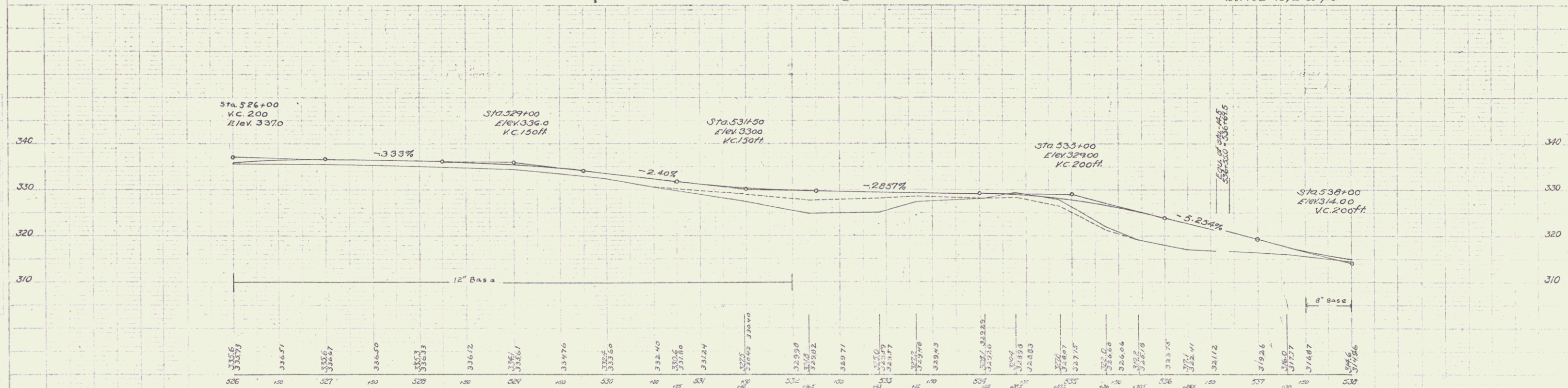
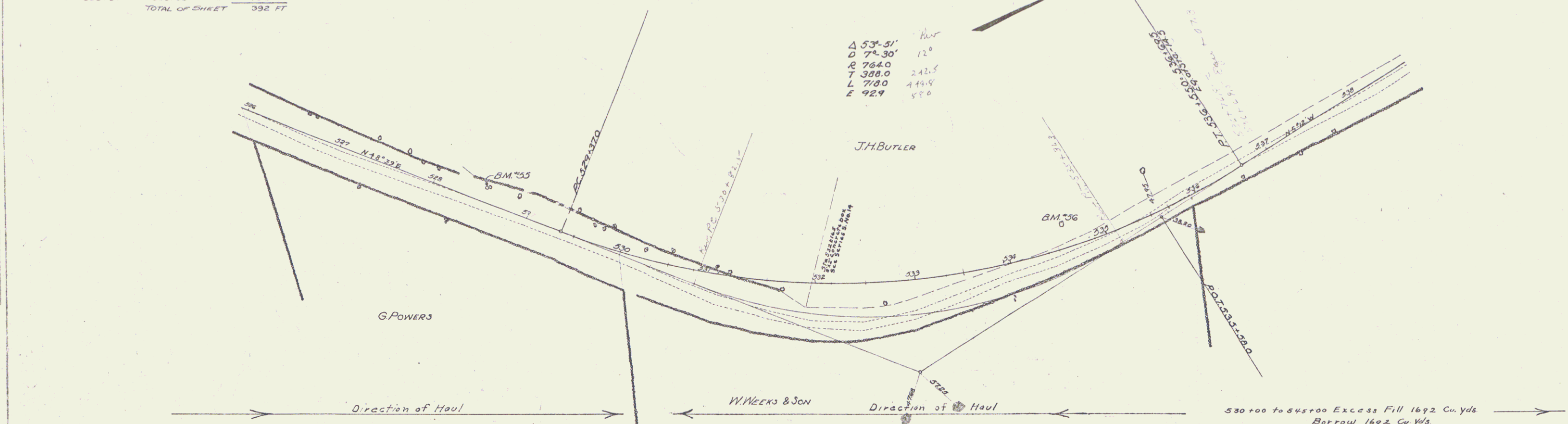
Series No. 75A  
 Sheet 16 of 17

**GUARD RAIL REQUIRED**  
**OIL LEFT**  
 STA 532+05 TO 533+41 LENGTH 136 FT.  
 " 535+74 " 536+38 " 64 "  
**OIL RIGHT**  
 STA 532+05 TO 532+93 LENGTH 88 FT.  
 " 535+34 " 536+38 " 104 "  
 TOTAL OF SHEET 392 FT

**NEW CULVERTS REQUIRED**  
 STA 532+74.5 2x2 CONC. BOX 33ft  
 1-2' CONC. 9.2 CU YDS.  
 1-2 1/2' CONC. 8.3 " "  
 Rein Steel 727 lbs.

PL. ROAD STATE PROJ. ADJ. FISCAL YEAR TOTAL  
 DIST. NO. PROJ. NO. PLAN NO. SHEET NO.  
 171 172A 142312 17

Δ 53°-51' HOR  
 D 74.30' 12°  
 R 784.0  
 T 308.0 242.5  
 L 718.0 449.9  
 E 92.9 58.0

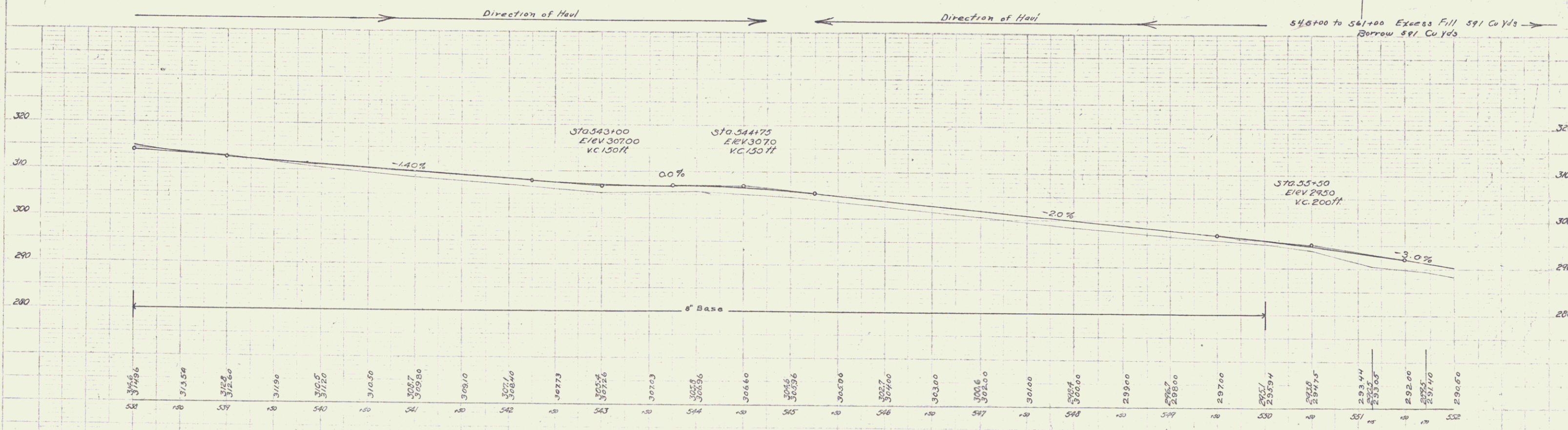
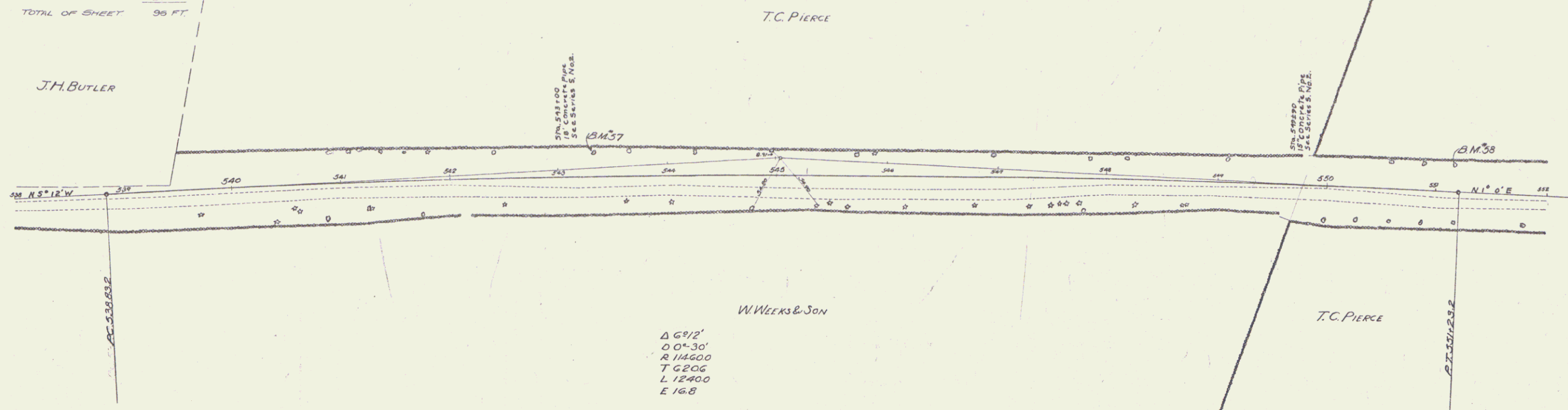


B.M. #55 Spike in roots of 8" Elm 14' to left of Sta 528+54 Elev. 335.33  
 B.M. #56 Spike " " " 30' Elm 34' to left of Sta 534+75 Elev. 330.42

QUARD DAIL, GROUND  
 ON LEFT  
 STA 542+88 TO STA 543+12 LENGTH 24 FT.  
 " 549+78 " " 550+02 " 24 "  
 ON RIGHT  
 STA 542+88 TO STA 543+12 LENGTH 24 FT.  
 " 549+78 " " 550+02 " 24 "  
 TOTAL OF SHEET 96 FT.

NEW CULVERTS REQUIRED  
 STA 543+00 18" CONC PIPE 30ft  
 1-2% CONC 2.5 cu yds  
 STA 544+75 18" CONC PIPE 30ft  
 1-2% CONC 1.8 cu yds.

NO.	DATE	BY	REVISION
1	11/27/22	W.C. BRADLEY	ISSUED



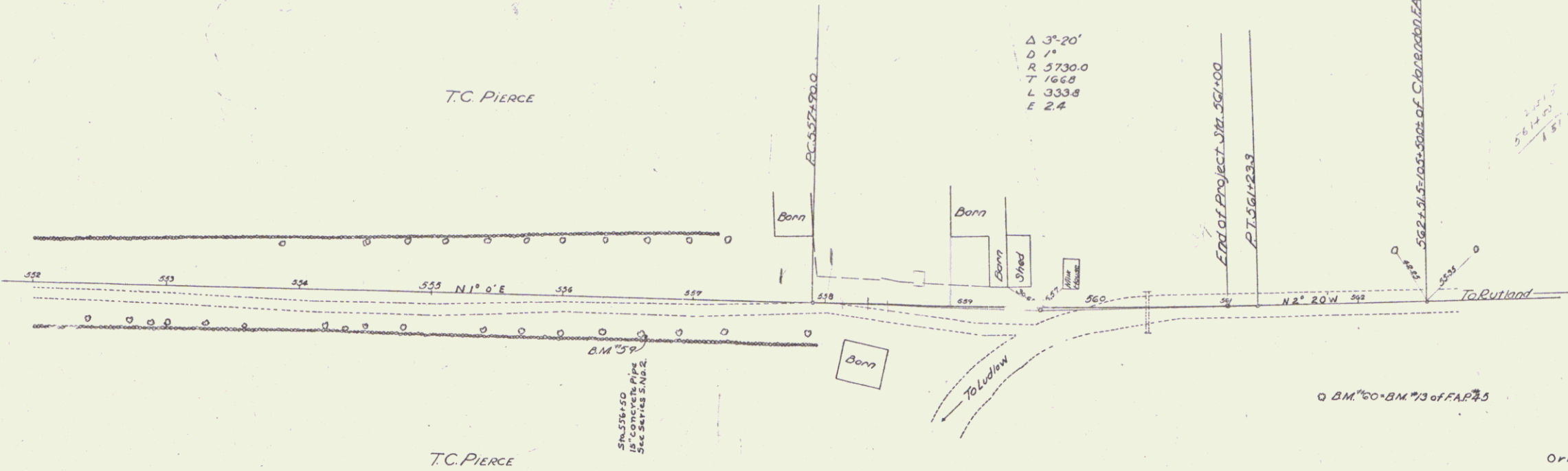
B.M. # 57 Spire in roots of 10" Maple 13' to left Sta. 543+34 Elev. 305.24  
 B.M. # 56 " " " 10" Maple 23' to left Sta. 551+18 Elev. 292.41

Series F No. 75A  
 Sheet 19 of 57

GUARD RAIL REQUIRED  
ON LEFT  
STA 558+38 TO STA 556+62 LENGTH 24 FT.  
ON RIGHT  
STA 556+38 TO STA 556+62 LENGTH 24 FT.  
TOTAL OF SHEET 48 FT.

NEW CULVERTS REQUIRED  
STA 556+30 18" CONC PIPE 30ft  
12x15 CONC 18 cu yds.

FILE NO. 11-172-A-1055-120  
DATE 11-17-21

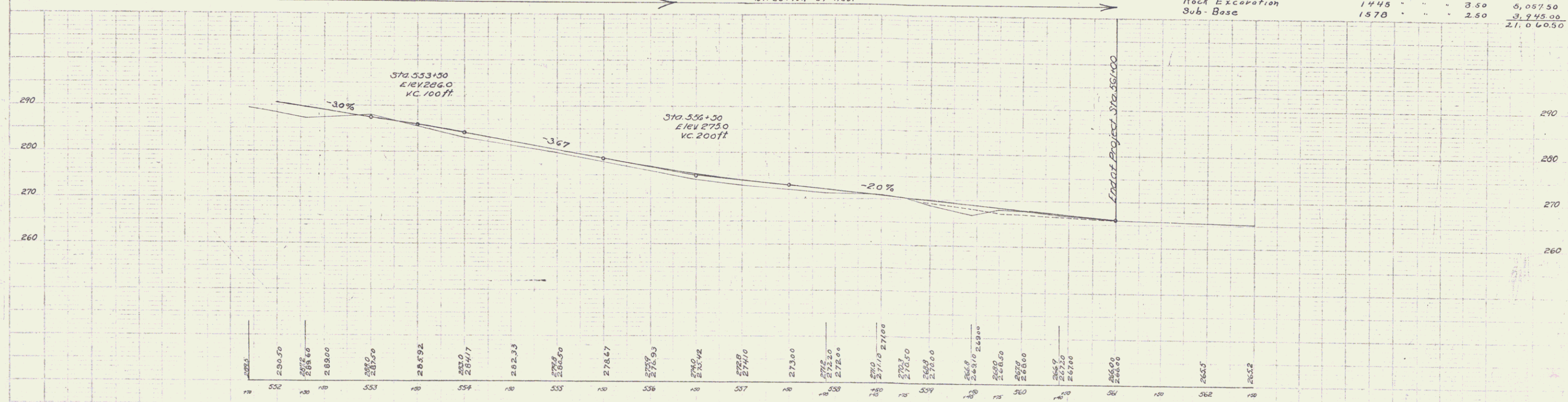


Original Estimate

Earth Excavation	11429	Cu Yds.	@ \$ 1.00	\$ 11,429.00
Rock Excavation	1910	"	" 3.50	6,685.00
Sub-Base	2655	"	" 2.50	6,637.50
				24,751.50

Revised Estimate

Earth Excavation and Borrow	12058	Cu Yds.	@ \$ 1.00	\$ 12,058.00
Rock Excavation	1445	"	" 3.50	5,057.50
Sub-Base	1570	"	" 2.50	3,925.00
				21,040.50



BM #59 Spike in roots of 20' Maple 42' to right of Sta 556+61 Elev 292.41  
BM #60 Spike in trunk of 18' Maple 51' to right of Sta 561+70 Elev 266.96