

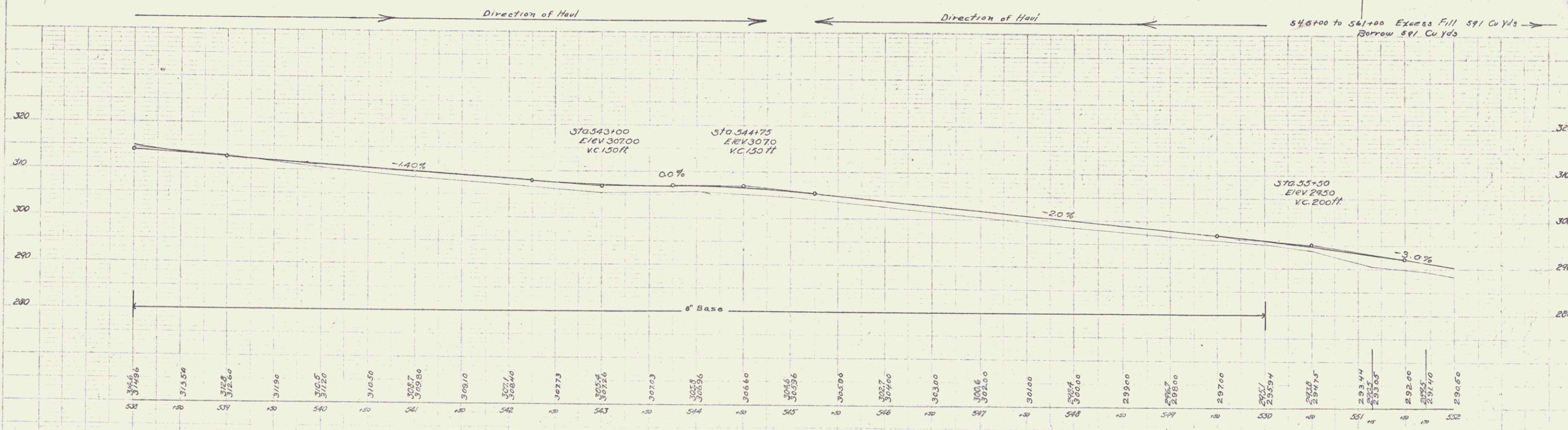
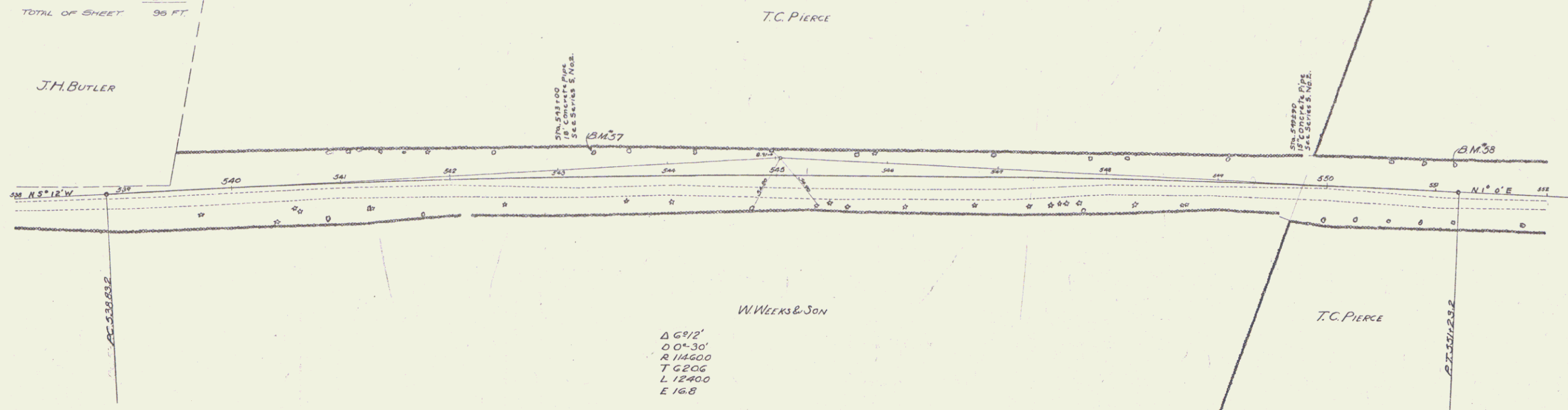
QUARD DAIL, GROUND
 ON LEFT
 STA 542+88 TO STA 543+12 LENGTH 24 FT.
 " 549+78 " " 550+02 " 24 "

ON RIGHT
 STA 542+88 TO STA 543+12 LENGTH 24 FT.
 " 549+78 " " 550+02 " 24 "

TOTAL OF SHEET 96 FT.

NEW CULVERTS REQUIRED 30ft
 STA 543+00 18" CONC PIPE 1-2% CONC 2.5 CU YDS
 STA 544+70 18" CONC PIPE 30ft
 1-2% CONC 18 CU YDS

NO.	DATE	BY	REVISION
1	11/27/27	W.C. BIRD	DESIGN
2	12/27/27	W.C. BIRD	REVISED



B.M. # 57 Spire in roots of 10" Maple 13' to left Sta. 543+34 Elev. 305.24
 B.M. # 56 " " " 10" Maple 23' to left Sta. 551+18 Elev. 292.41

Series F No. 75A
 Sheet 19 of 57