

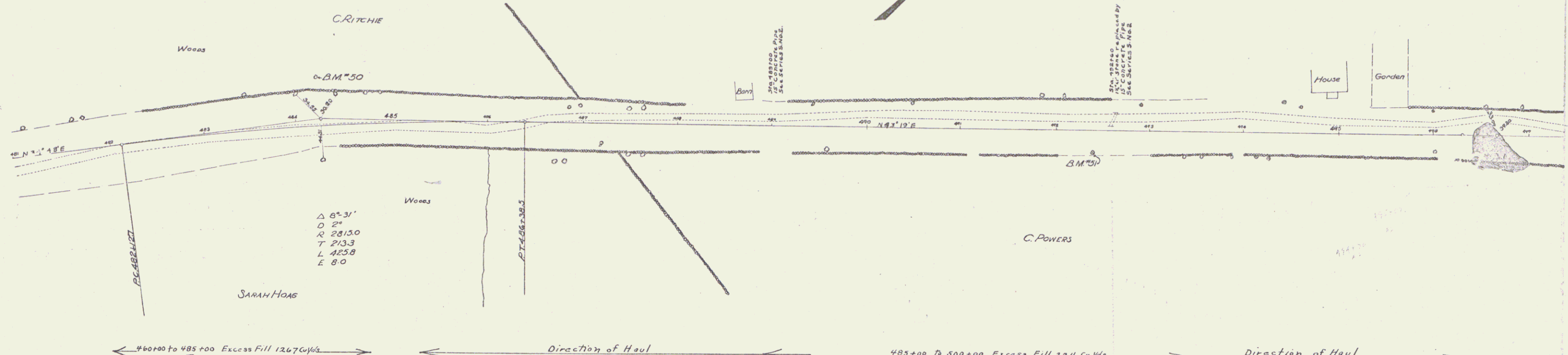
GUMBO PAIL REQUIRED
ON LEFT
 STA 489+88 TO STA. 489+12 LENGTH 24 FT.
 " 492+48 " " 492+12 " 24 "

ON RIGHT
 STA. 489+88 TO STA. 489+12 LENGTH 24 FT.
 " 492+48 " " 492+12 " 24 "

TOTAL THIS SHEET 96 FT.

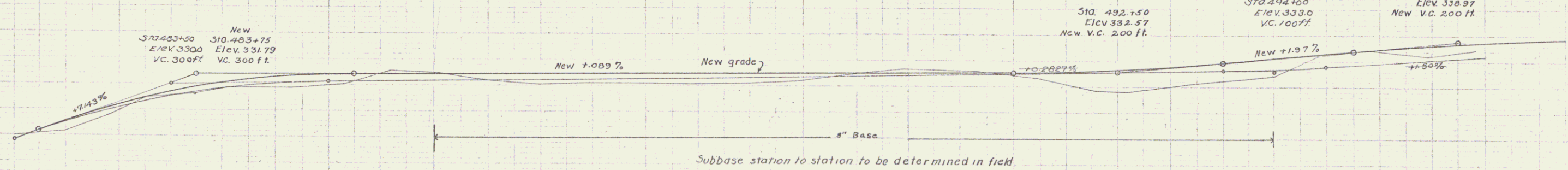
NEW CULVERTS REQUIRED
 489+00 15" Conc Pipe 30 ft.
 Conc Class B (1-2-3) 18 cy.
 492+60 15" Conc Pipe 32
 Conc Class B (1-2-3) 18 cy.

FIELD BOOK STATE FED. AD. FISCA. SHEET
 DIST. NO. 11734 1142 12



← 480+00 to 485+00 Excess Fill 12.67 Cu Yds. Borrow 12.67 Cu Yds. Direction of Haul 485+00 to 500+00 Excess Fill 12.24 Cu Yds. Borrow 22.4 Cu Yds. Direction of Haul →

329.6	322.76	325.27	325.76	327.03	328.16	329.14	329.86	330.06	331.18	331.83	331.83	331.94	331.95	331.99	332.02	332.03	332.03	332.08	332.12	332.17	332.20	332.26	332.30	332.30	332.35	332.44	332.48	332.53	332.62	332.63	332.64	332.67	332.68	332.76	333.04	333.16	333.67	333.98	334.54	335.33	335.52	336.30	336.57	337.20	337.47	338.47	338.59	338.87	338.96																														
482	+50	483	103	125	150	175	200	225	250	275	300	325	350	375	400	425	450	475	500	525	550	575	600	625	650	675	700	725	750	775	800	825	850	875	900	925	950	975	1000	1025	1050	1075	1100	1125	1150	1175	1200	1225	1250	1275	1300	1325	1350	1375	1400	1425	1450	1475	1500	1525	1550	1575	1600	1625	1650	1675	1700	1725	1750	1775	1800	1825	1850	1875	1900	1925	1950	1975	2000



329.6	322.76	325.27	325.76	327.03	328.16	329.14	329.86	330.06	331.18	331.83	331.83	331.94	331.95	331.99	332.02	332.03	332.03	332.08	332.12	332.17	332.20	332.26	332.30	332.30	332.35	332.44	332.48	332.53	332.62	332.63	332.64	332.67	332.68	332.76	333.04	333.16	333.67	333.98	334.54	335.33	335.52	336.30	336.57	337.20	337.47	338.47	338.59	338.87	338.96																												
482	100	125	150	175	200	225	250	275	300	325	350	375	400	425	450	475	500	525	550	575	600	625	650	675	700	725	750	775	800	825	850	875	900	925	950	975	1000	1025	1050	1075	1100	1125	1150	1175	1200	1225	1250	1275	1300	1325	1350	1375	1400	1425	1450	1475	1500	1525	1550	1575	1600	1625	1650	1675	1700	1725	1750	1775	1800	1825	1850	1875	1900	1925	1950	1975	2000

BM #50 Spike in roots of 20' Maple 43' to left sta. 484+27 Elev. 321.50
 BM #51 Spike in roots of 12' Elm 24' to right sta. 412+38 Elev. 310.76