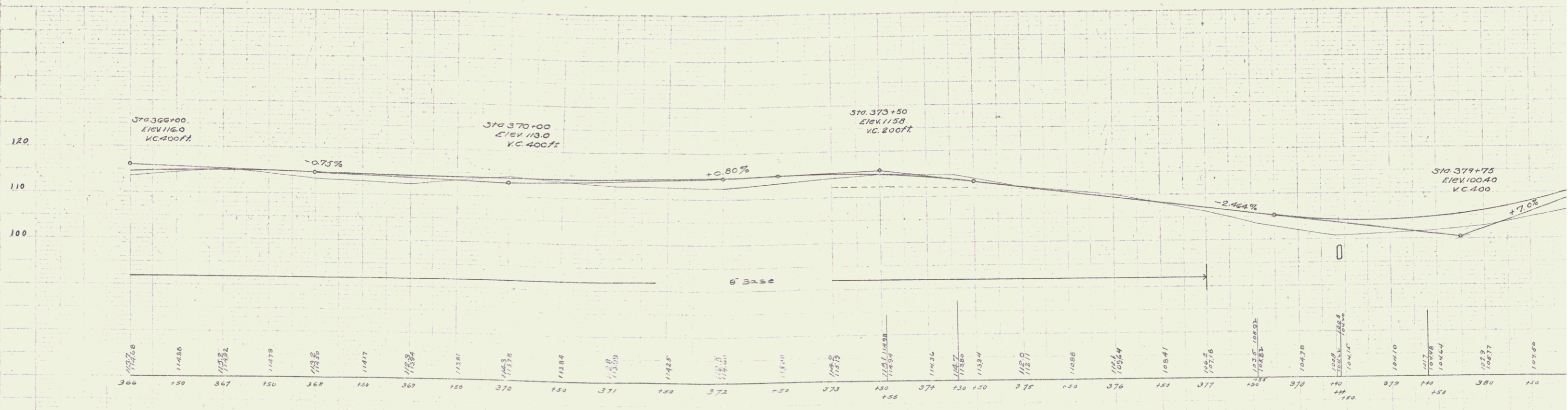
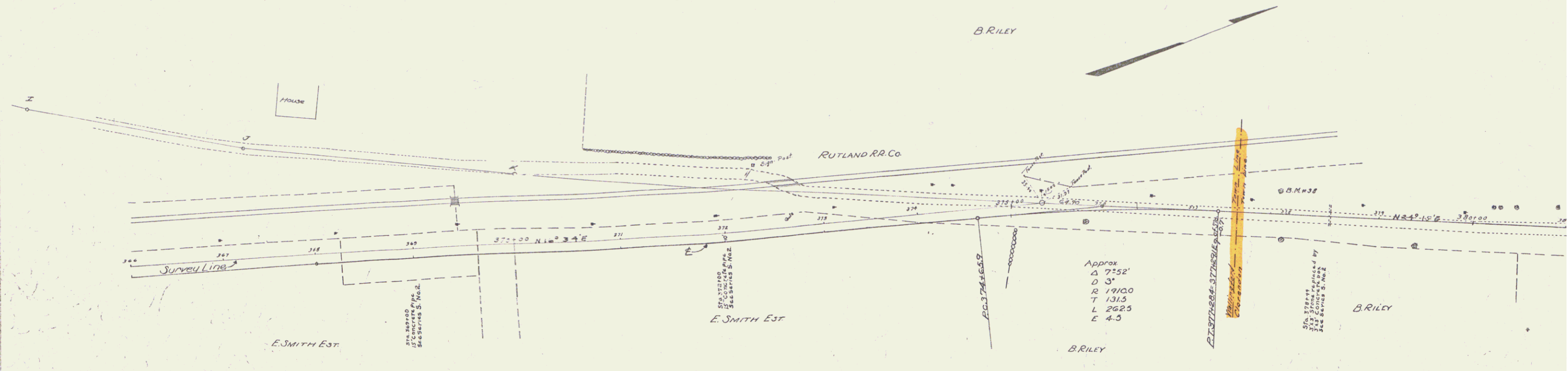


GUARD RAIL REQUIRED
ON LEFT
Sta 368+88 to 370+36 1/2 Length 24 ft.
" 371+88 " " 372+12 " 24 "
" 377+60 " " 381+00 " 340 "

GUARD RAIL REQUIRED
ON RIGHT
Sta 368+88 to 370+36 1/2 Length 24 ft.
" 371+88 " " 372+12 " 24 "
" 377+36 " " 381+00 " 364 "
TOTAL THIS SHEET 800 ft.

NEW CULVERTS REQUIRED
Sta 369+00 15" Conc Pipe Culvert 30 ft
Concrete (1-2 1/2-5) 18 cu yd.
Sta 372+00 15" Conc Pipe Culvert 28 ft
Concrete (1-2 1/2-5) 18 cu yd.
Sta 379+44 3' x 3' Reinforced Conc Box
Conc Cross A (1-2 1/2) 14.1 cu yd
" " B (1-2 1/2) 13.7 cu yd
Reinforcing Steel 1121 lbs

REL. ROAD DIST. STATED AND FISCAL YEAR
B. L. V. 1917 1925 1928 1932 1935 1938 1941 1944 1947 1950 1953 1956 1959 1962 1965 1968 1971 1974 1977 1980 1983 1986 1989 1992 1995 1998 2001 2004 2007 2010 2013 2016 2019 2022



BM #38 Spike in roots of 24" Elm 26' to left of Sta 371+91 Elev 101.57

Series F No. 75
Sheet 1 of 6
6