

GUARD RAIL REQUIRED
ON LEFT

Sta	Length	Off
310.325+70 to 310.326+58	18'	00 ft
328+33	24"	24"
331+36	22"	22"
333+78	22"	22"

GUARD RAIL REQUIRED
ON RIGHT

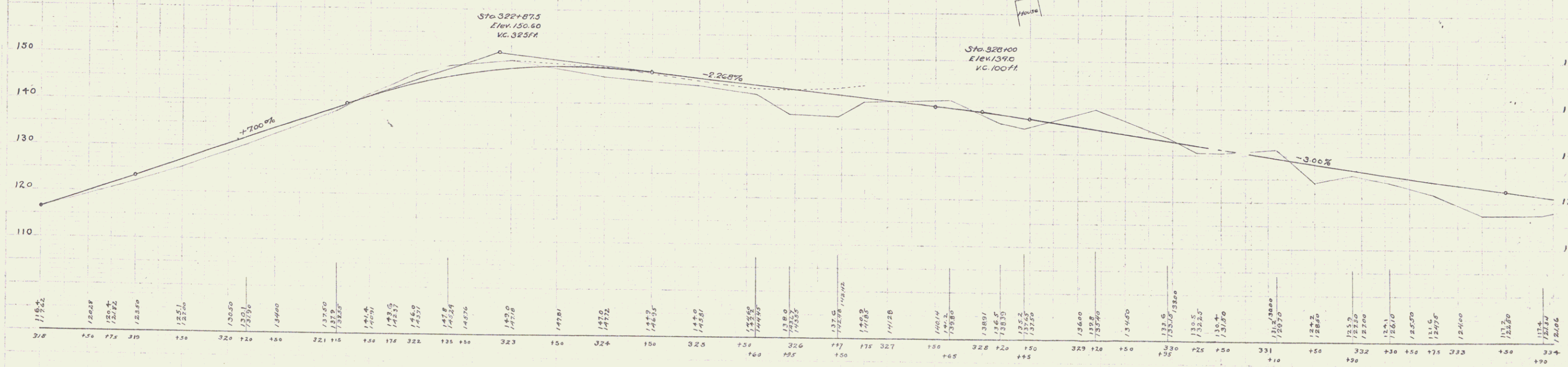
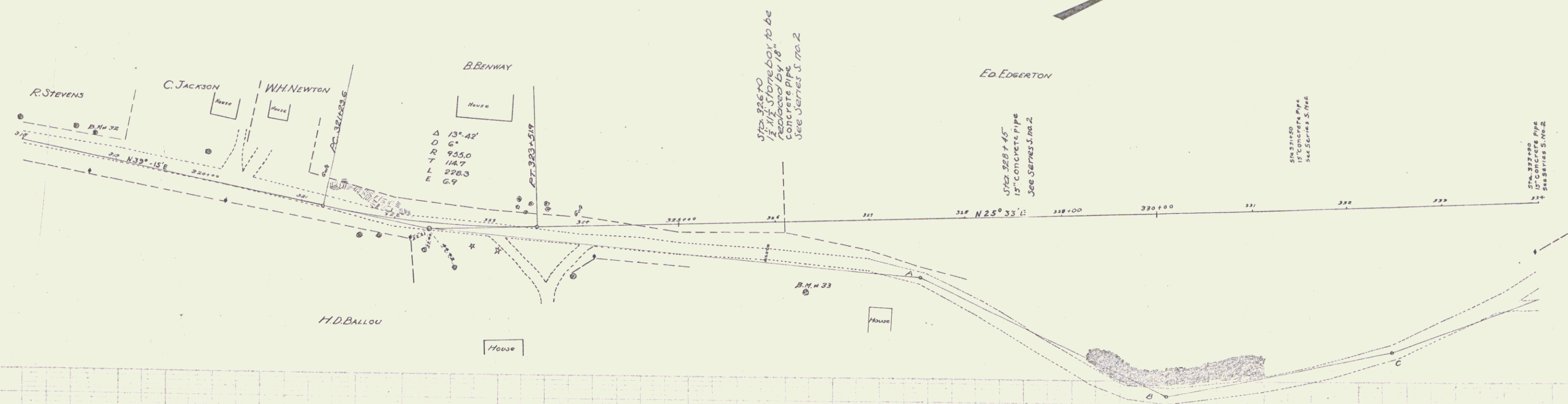
Sta	Length	Off
310.325+72 to 310.326+20	58'	00 ft
328+33	24"	24"
331+38	24"	24"
333+78	22"	22"

TOTAL THIS SHEET 412 FT.

NEW CULVERTS REQUIRED

310.326+00	18" CONC. PIPE	36 ft
	1-2 1/2" CONC.	2.5 cu yds.
310.328+45	15" CONC. PIPE	30 ft
	1-2 1/2" CONC.	1.8 cu yds.
310.331+50	10" CONC. PIPE	34 ft
	1-2 1/2" CONC.	1.8 cu yds.
310.333+90	15" CONC. PIPE	32 ft
	1-2 1/2" CONC.	1.8 cu yds.

REGISTERED PROFESSIONAL ENGINEER
STATE OF ILLINOIS
No. 123456789
J. W. BROWN



B.M. #32 Spike in roots of 30' Maple 25' to left of sta 318+11 Elev. 118.90
B.M. #33 " " " " 24' " 75' to right of Sta. 321+30 Elev. 150.38