

GUARD RAIL REQUIRED
ON LEFT

Sta. 313+08 to 313+12	Length	24ft
" 313+45 - " 316+17	"	72 "

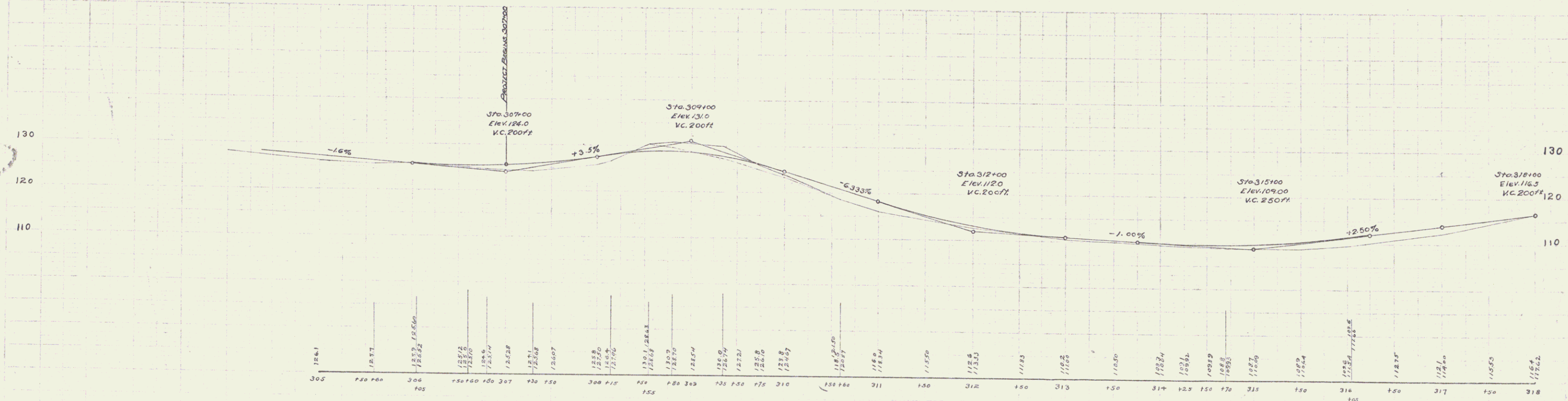
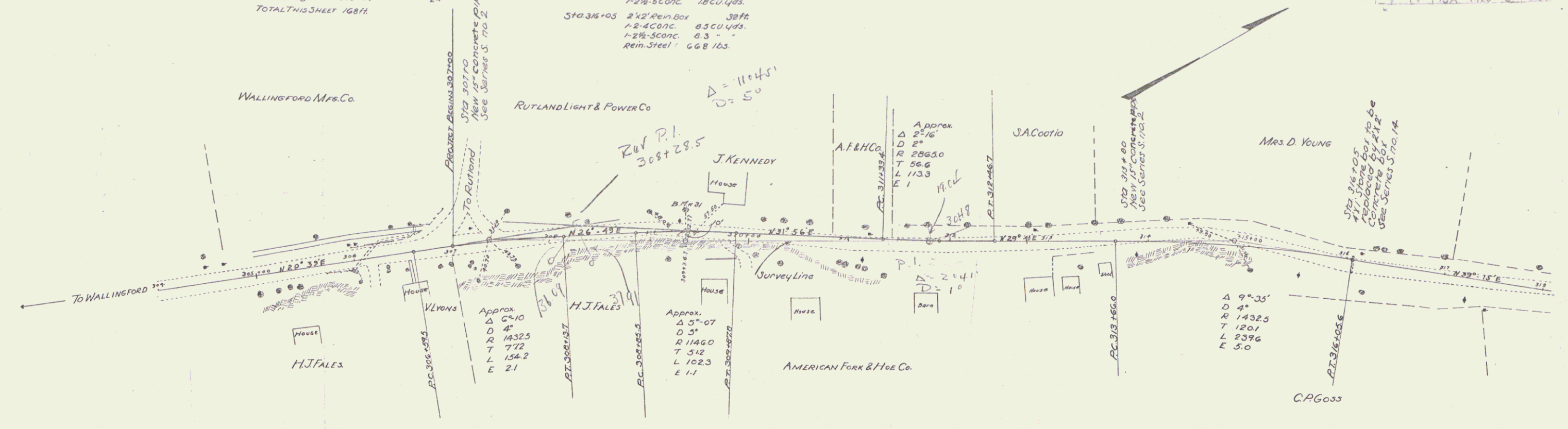
GUARD RAIL REQUIRED
ON RIGHT

Sta. 306+80 to 310+12	Length	24ft
" 313+08 - " 313+12	"	24 "
" 315+93 - " 316+17	"	24 "

TOTAL THIS SHEET 168ft

NEW CULVERTS REQUIRED

Sta. 307+00	15" CONC. PIPE	50ft
	1-2 1/2" S. CONC.	1.00 cu yds.
Sta. 313+80	15" CONC. PIPE	30ft
	1-2 1/2" S. CONC.	.75 cu yds.
Sta. 316+05	24" REIN. BOX	30ft
	1-2-4" CONC.	.83 cu yds.
	1-2 1/2" S. CONC.	.63 "
	Rein. Steel	66.8 lbs.



BM #31 Spike in roots of 24" maples to left of Sta. 307+37 Elev. 129.70

Series No. 75A
Sheet 5 of 57