

SHEET NO. INDEX OF SHEETS

# BR US 4

## STATE OF VERMONT DEPARTMENT OF HIGHWAYS

### PROPOSED IMPROVEMENT

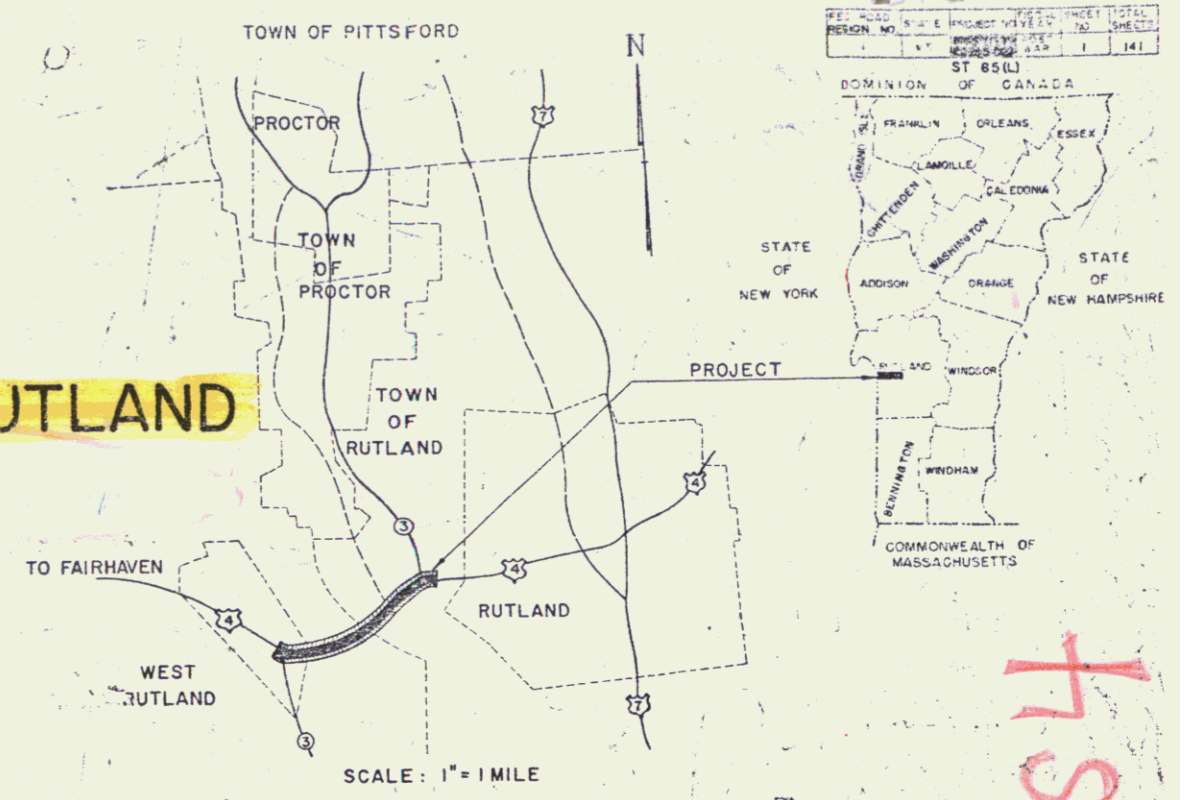
#### TOWNS OF WEST RUTLAND & RUTLAND

#### COUNTY OF RUTLAND BR U.S. ROUTE 4 WEST RUTLAND - RUTLAND ROAD

BEGINNING AT A POINT 175 FEET WESTERLY OF THE INTERSECTION OF VERMONT ROUTE 3 AND U.S. ROUTE 4 AND EXTENDING EASTERLY 11,076 FEET TO A POINT 352 FEET EASTERLY OF THE INTERSECTION OF VERMONT ROUTE 3 AND U.S. ROUTE 4.

LENGTH OF ROADWAY 10737.90 FEET = 2.037 MILES  
(DEDUCTING RR CROSSINGS)

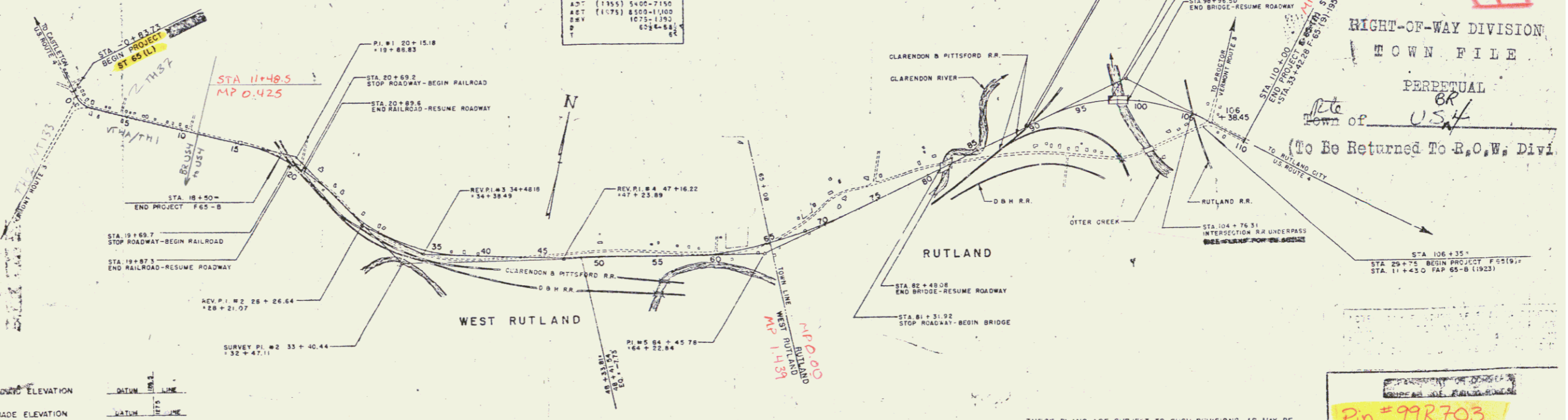
LENGTH OF BRIDGES 263.16 FEET = 0.050 MILES  
LENGTH OF PROJECT 11020.96 FEET = 2.087 MILES



- 1 - TITLE PAGE
- 2 - PROPERTY PLAN
- 3 - TYPICAL CROSS-SECTION OF IMPROVEMENT (2 1/2" BITUMINOUS CONCRETE PAVEMENT-ITEM-361B)
- 4-5 - QUANTITY SHEET (ITEMS)
- 6 - QUANTITY SHEET (DRAINAGE)
- 7-10 - EARTHWORK SHEETS
- 11-19 - PLAN AND PROFILE SHEETS
- 20 - CONSTRUCTION DETAILS (MEDIAN STRIP, MOUNTABLE CURB, METAL END SECTIONS)
- 21-32 - BRIDGE SHEETS (RIVER AND CREEK)
- 32-A & 32-B - PRELIMINARY INFORMATION SHEETS FOR BRIDGES
- 33 - ROADWAY STANDARD SHEET RS 56-1 (BANKING TABLES)
- 34 - ROADWAY STANDARD SHEET RS 56-2 (DROP INLETS)
- 35 - ROADWAY STANDARD SHEET RS 56-3 (MARKERS)
- 36 - ROADWAY STANDARD SHEET RS 56-4 (DRAINAGE)
- 37 - ROADWAY STANDARD SHEET RS 56-5 (CONC. CURB, GRAN. CURB, CONC. S.W.)
- 38 - ROADWAY STANDARD SHEET RS 56-6 (TYPICAL GRADING & TURNOUTS)
- 39 - ROADWAY STANDARD SHEET RS 56-7 (CONC. CATCH BASINS OR M.H.)
- 39-A - 39-B - FLASHING LIGHT SIGNALS STA. 20+79.4 & 89+34
- 40 - TYPICAL SECTION AND PLAN (CLARENDON AND PITTSFORD R.R. CROSSING)
- 40-A - WIRING DIAGRAMS CLARENDON AND PITTSFORD R.R. CROSSING
- 40-B - TYPICAL SECTION AND PLAN (DELAWARE AND HUDSON R.R. CROSSING)
- 40-C - WIRING DIAGRAMS DELAWARE AND HUDSON R.R. CROSSING
- 41 - ROADWAY STANDARD SHEET RS 56-11 (THREE RAIL GUARD RAIL WITH STEEL POSTS)
- 42 - ROADWAY STANDARD SHEET RS 56-12 (BARRICADES, SIGNS, & LIGHTS)
- 43-117 - CROSS SECTIONS
- 118-122 - CHANNEL SECTIONS

#### RAILROAD OVERPASS

- 123 - LOCATION PLAN & BORING LOG
- 124 - FRAMING PLAN
- 125-126 - SUPERSTRUCTURE DETAILS
- 127 - PILING PLAN
- 128 - NORTH ABUTMENT
- 129 - SOUTH ABUTMENT
- 130-134 - FALSEWORK PLANS & DETAILS
- 135-141 - CROSS SECTIONS



DESIGN DESIGNATION	
A-1	(135) 5400-7150
A-2	(175) 8500-1100
B-1	(175) 1075-1190
P	424-434

COUNTY OF RUTLAND  
TOWN LINE  
TOWN OF WEST RUTLAND  
TOWN OF RUTLAND  
STATE OF VERMONT  
DEPARTMENT OF HIGHWAYS  
PROJECT: WEST RUTLAND - RUTLAND ROAD  
DATE: OCTOBER 15, 1957

GRADE ELEVATION	DRAW	DATE
11+48.5	11/15/57	MP 0.425
18+50	11/15/57	MP 0.425
18+71	11/15/57	MP 0.425
20+79.4	11/15/57	MP 0.425
89+34	11/15/57	MP 0.425
106+35	11/15/57	MP 0.425

CURVE DATA	
DEFLECTION OF ANGLE	D
DEGREE OF CURVE	D
RADIUS OF CURVE	R
TANGENT DISTANCE	T
LENGTH OF CURVE	L
EXTERNAL DISTANCE	E
POINT OF INTERSECTION	PI
POINT OF CURVE	PC
POINT OF TANGENT	PT
POINT ON TANGENT	POT
POINT ON SUB-TANGENT	POT
POINT OF COMMENCEMENT	PC

SCALES	
TITLE	1" = 500'
TYPICAL	1" = 4'
PLAN	1" = 50' & 20'
PROFILE	HORIZONTAL 1" = 10'
CROSS-SECTIONS	1" = 5' & 10'

PREPARED AND RECOMMENDED:  
WILLIAM H. McFARLAND CONSULTING ENGINEER  
STATE OF VERMONT, LICENSE NO. 422  
DATE: OCTOBER 15, 1957

APPROVED: [Signatures] DATE: OCTOBER 15, 1957

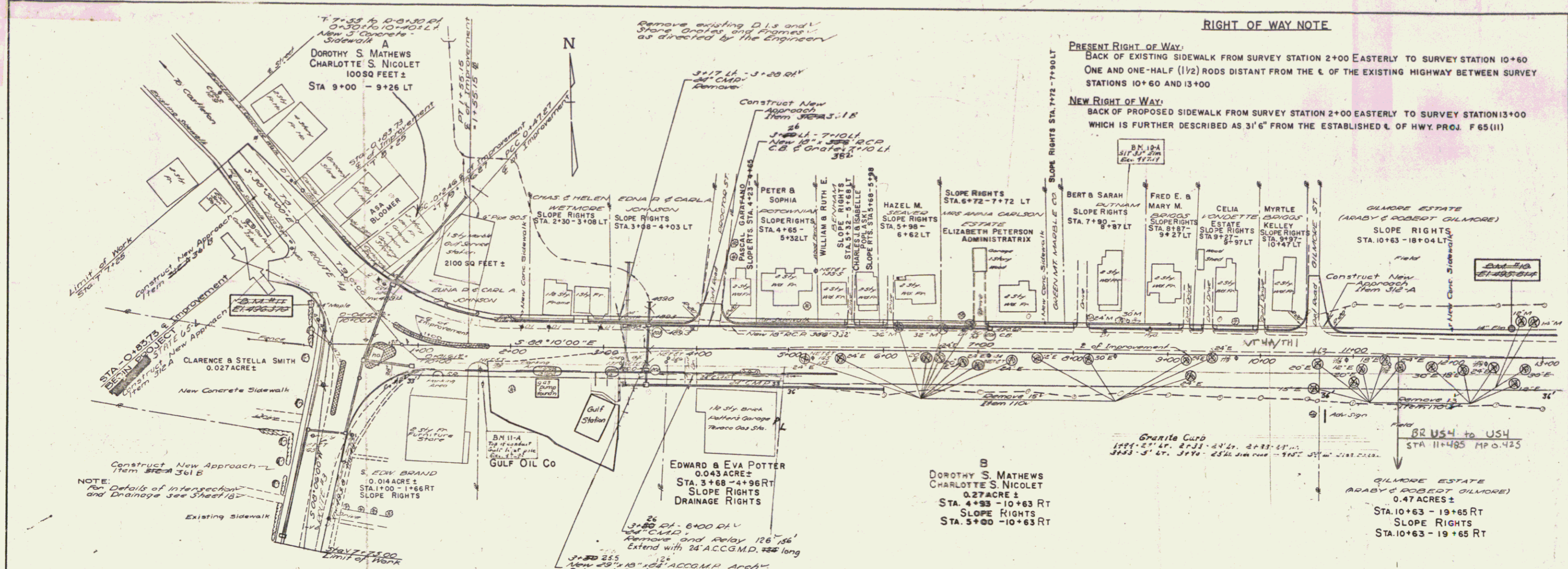
THESE PLANS ARE SUBJECT TO SUCH REVISIONS AS MAY BE REQUIRED BY THE COMMISSIONER OF HIGHWAYS.  
CONSTRUCTION IS TO BE CARRIED ON IN ACCORDANCE WITH THE PLANS AND THE STANDARD SPECIFICATIONS FOR HIGHWAY AND BRIDGE CONSTRUCTION OF JANUARY 1955, WITH THE EXCEPTION OF THE SPECIFICATIONS FOR BRIDGES AS SUPERSEDED BY THIS ORDER, INCLUDING ALL SUBSEQUENT APPROVED REVISIONS AND SUCH REVISED SPECIFICATIONS AND SPECIAL PROVISIONS AS ARE SUBMITTED WITH THE PLANS.

Pin # 99R703

APPROVED: [Signatures] DATE: OCTOBER 15, 1957

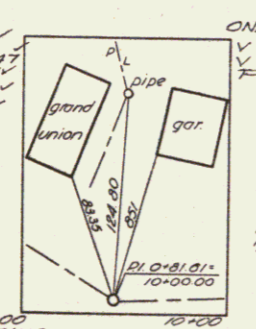
Sheet 1





NOTE: For Details of Intersection and Drainage see Sheet 18

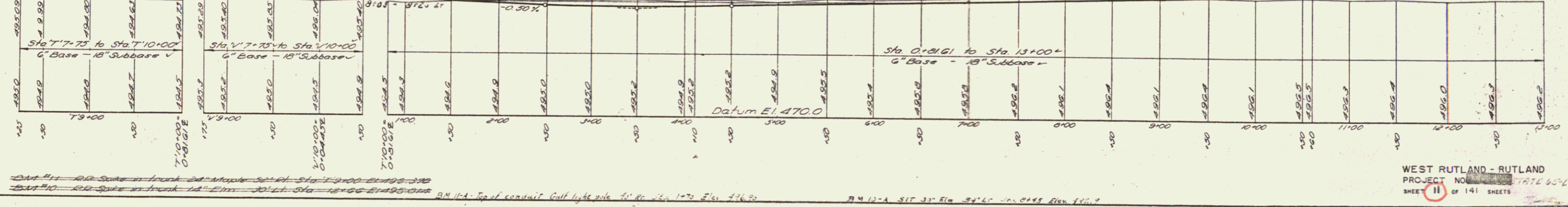
OF IMPROVEMENT	See
D	10
T	18
L	18
N	18



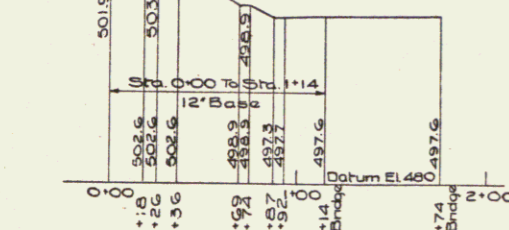
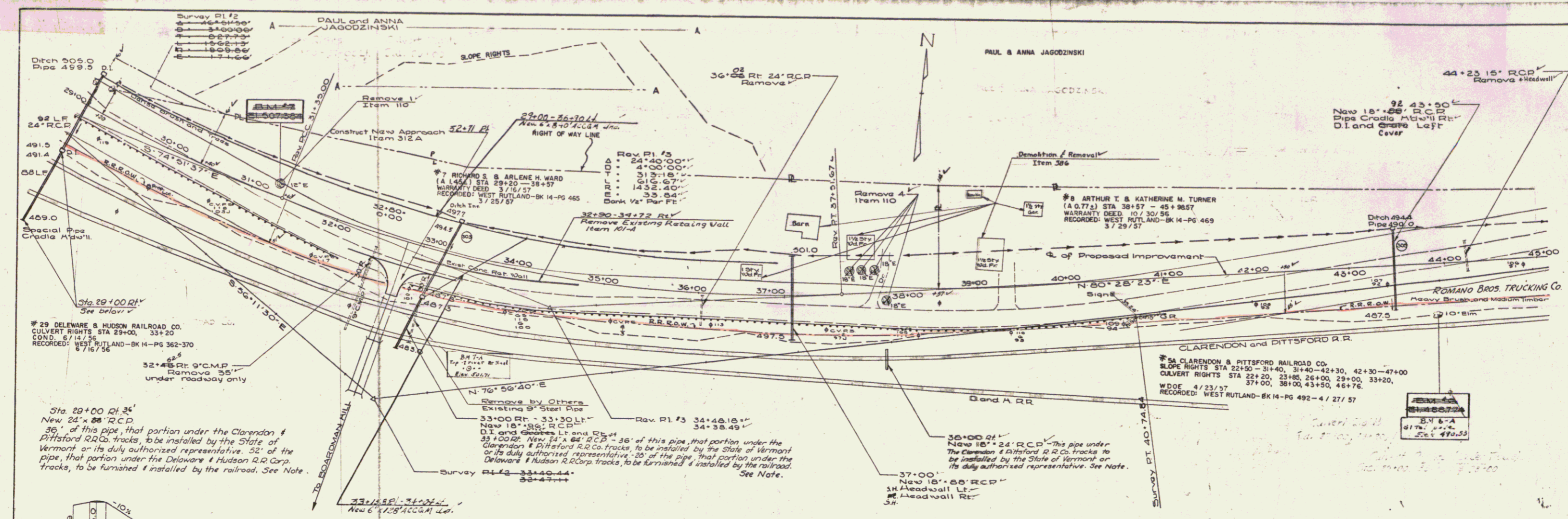
ONE COURSE CEMENT CONCRETE SIDEWALK - 5"	DRIVE RAMP
9+48.07	10+23.51
10+48.65	11+53.80
11+48.24	12+23.81
12+48.70	13+23.58
13+48.24	14+23.51
14+48.70	15+23.51
15+48.24	16+23.51
16+48.70	17+23.51
17+48.24	18+23.51
18+48.70	19+23.51
19+48.24	20+23.51
20+48.70	21+23.51
21+48.24	22+23.51
22+48.70	23+23.51
23+48.24	24+23.51
24+48.70	25+23.51
25+48.24	26+23.51
26+48.70	27+23.51
27+48.24	28+23.51
28+48.70	29+23.51
29+48.24	30+23.51
30+48.70	31+23.51
31+48.24	32+23.51
32+48.70	33+23.51
33+48.24	34+23.51
34+48.70	35+23.51
35+48.24	36+23.51
36+48.70	37+23.51
37+48.24	38+23.51
38+48.70	39+23.51
39+48.24	40+23.51
40+48.70	41+23.51
41+48.24	42+23.51
42+48.70	43+23.51
43+48.24	44+23.51
44+48.70	45+23.51
45+48.24	46+23.51
46+48.70	47+23.51
47+48.24	48+23.51
48+48.70	49+23.51
49+48.24	50+23.51
50+48.70	51+23.51
51+48.24	52+23.51
52+48.70	53+23.51
53+48.24	54+23.51
54+48.70	55+23.51
55+48.24	56+23.51
56+48.70	57+23.51
57+48.24	58+23.51
58+48.70	59+23.51
59+48.24	60+23.51
60+48.70	61+23.51
61+48.24	62+23.51
62+48.70	63+23.51
63+48.24	64+23.51
64+48.70	65+23.51
65+48.24	66+23.51
66+48.70	67+23.51
67+48.24	68+23.51
68+48.70	69+23.51
69+48.24	70+23.51
70+48.70	71+23.51
71+48.24	72+23.51
72+48.70	73+23.51
73+48.24	74+23.51
74+48.70	75+23.51
75+48.24	76+23.51
76+48.70	77+23.51
77+48.24	78+23.51
78+48.70	79+23.51
79+48.24	80+23.51
80+48.70	81+23.51
81+48.24	82+23.51
82+48.70	83+23.51
83+48.24	84+23.51
84+48.70	85+23.51
85+48.24	86+23.51
86+48.70	87+23.51
87+48.24	88+23.51
88+48.70	89+23.51
89+48.24	90+23.51
90+48.70	91+23.51
91+48.24	92+23.51
92+48.70	93+23.51
93+48.24	94+23.51
94+48.70	95+23.51
95+48.24	96+23.51
96+48.70	97+23.51
97+48.24	98+23.51
98+48.70	99+23.51
99+48.24	100+23.51

CONSTRUCT APPROACHES	STEEL GUIDE POST	CONSTRUCT DRIVES	GRANITE CURB
Sta. 7+75 to Sta. 10+00	3+25.5	Sta. 10+00 to Sta. 13+00	Sta. 10+63 to Sta. 19+65 RT
Sta. 10+00 to Sta. 13+00	4+24	Sta. 13+00 to Sta. 16+00	Sta. 10+63 to Sta. 19+65 RT
Sta. 13+00 to Sta. 16+00	5+23	Sta. 16+00 to Sta. 19+00	Sta. 10+63 to Sta. 19+65 RT
Sta. 16+00 to Sta. 19+00	6+22	Sta. 19+00 to Sta. 22+00	Sta. 10+63 to Sta. 19+65 RT
Sta. 19+00 to Sta. 22+00	7+21	Sta. 22+00 to Sta. 25+00	Sta. 10+63 to Sta. 19+65 RT
Sta. 22+00 to Sta. 25+00	8+20	Sta. 25+00 to Sta. 28+00	Sta. 10+63 to Sta. 19+65 RT
Sta. 25+00 to Sta. 28+00	9+19	Sta. 28+00 to Sta. 31+00	Sta. 10+63 to Sta. 19+65 RT
Sta. 28+00 to Sta. 31+00	10+18	Sta. 31+00 to Sta. 34+00	Sta. 10+63 to Sta. 19+65 RT
Sta. 31+00 to Sta. 34+00	11+17	Sta. 34+00 to Sta. 37+00	Sta. 10+63 to Sta. 19+65 RT
Sta. 34+00 to Sta. 37+00	12+16	Sta. 37+00 to Sta. 40+00	Sta. 10+63 to Sta. 19+65 RT
Sta. 37+00 to Sta. 40+00	13+15	Sta. 40+00 to Sta. 43+00	Sta. 10+63 to Sta. 19+65 RT
Sta. 40+00 to Sta. 43+00	14+14	Sta. 43+00 to Sta. 46+00	Sta. 10+63 to Sta. 19+65 RT
Sta. 43+00 to Sta. 46+00	15+13	Sta. 46+00 to Sta. 49+00	Sta. 10+63 to Sta. 19+65 RT
Sta. 46+00 to Sta. 49+00	16+12	Sta. 49+00 to Sta. 52+00	Sta. 10+63 to Sta. 19+65 RT
Sta. 49+00 to Sta. 52+00	17+11	Sta. 52+00 to Sta. 55+00	Sta. 10+63 to Sta. 19+65 RT
Sta. 52+00 to Sta. 55+00	18+10	Sta. 55+00 to Sta. 58+00	Sta. 10+63 to Sta. 19+65 RT
Sta. 55+00 to Sta. 58+00	19+09	Sta. 58+00 to Sta. 61+00	Sta. 10+63 to Sta. 19+65 RT
Sta. 58+00 to Sta. 61+00	20+08	Sta. 61+00 to Sta. 64+00	Sta. 10+63 to Sta. 19+65 RT
Sta. 61+00 to Sta. 64+00	21+07	Sta. 64+00 to Sta. 67+00	Sta. 10+63 to Sta. 19+65 RT
Sta. 64+00 to Sta. 67+00	22+06	Sta. 67+00 to Sta. 70+00	Sta. 10+63 to Sta. 19+65 RT
Sta. 67+00 to Sta. 70+00	23+05	Sta. 70+00 to Sta. 73+00	Sta. 10+63 to Sta. 19+65 RT
Sta. 70+00 to Sta. 73+00	24+04	Sta. 73+00 to Sta. 76+00	Sta. 10+63 to Sta. 19+65 RT
Sta. 73+00 to Sta. 76+00	25+03	Sta. 76+00 to Sta. 79+00	Sta. 10+63 to Sta. 19+65 RT
Sta. 76+00 to Sta. 79+00	26+02	Sta. 79+00 to Sta. 82+00	Sta. 10+63 to Sta. 19+65 RT
Sta. 79+00 to Sta. 82+00	27+01	Sta. 82+00 to Sta. 85+00	Sta. 10+63 to Sta. 19+65 RT
Sta. 82+00 to Sta. 85+00	28+00	Sta. 85+00 to Sta. 88+00	Sta. 10+63 to Sta. 19+65 RT
Sta. 85+00 to Sta. 88+00	29+99	Sta. 88+00 to Sta. 91+00	Sta. 10+63 to Sta. 19+65 RT
Sta. 88+00 to Sta. 91+00	30+98	Sta. 91+00 to Sta. 94+00	Sta. 10+63 to Sta. 19+65 RT
Sta. 91+00 to Sta. 94+00	31+97	Sta. 94+00 to Sta. 97+00	Sta. 10+63 to Sta. 19+65 RT
Sta. 94+00 to Sta. 97+00	32+96	Sta. 97+00 to Sta. 100+00	Sta. 10+63 to Sta. 19+65 RT
Sta. 97+00 to Sta. 100+00	33+95		
Sta. 100+00 to Sta. 103+00	34+94		
Sta. 103+00 to Sta. 106+00	35+93		
Sta. 106+00 to Sta. 109+00	36+92		
Sta. 109+00 to Sta. 112+00	37+91		
Sta. 112+00 to Sta. 115+00	38+90		
Sta. 115+00 to Sta. 118+00	39+89		
Sta. 118+00 to Sta. 121+00	40+88		
Sta. 121+00 to Sta. 124+00	41+87		
Sta. 124+00 to Sta. 127+00	42+86		
Sta. 127+00 to Sta. 130+00	43+85		
Sta. 130+00 to Sta. 133+00	44+84		
Sta. 133+00 to Sta. 136+00	45+83		
Sta. 136+00 to Sta. 139+00	46+82		
Sta. 139+00 to Sta. 142+00	47+81		
Sta. 142+00 to Sta. 145+00	48+80		
Sta. 145+00 to Sta. 148+00	49+79		
Sta. 148+00 to Sta. 151+00	50+78		
Sta. 151+00 to Sta. 154+00	51+77		
Sta. 154+00 to Sta. 157+00	52+76		
Sta. 157+00 to Sta. 160+00	53+75		
Sta. 160+00 to Sta. 163+00	54+74		
Sta. 163+00 to Sta. 166+00	55+73		
Sta. 166+00 to Sta. 169+00	56+72		
Sta. 169+00 to Sta. 172+00	57+71		
Sta. 172+00 to Sta. 175+00	58+70		
Sta. 175+00 to Sta. 178+00	59+69		
Sta. 178+00 to Sta. 181+00	60+68		
Sta. 181+00 to Sta. 184+00	61+67		
Sta. 184+00 to Sta. 187+00	62+66		
Sta. 187+00 to Sta. 190+00	63+65		
Sta. 190+00 to Sta. 193+00	64+64		
Sta. 193+00 to Sta. 196+00	65+63		
Sta. 196+00 to Sta. 199+00	66+62		
Sta. 199+00 to Sta. 202+00	67+61		
Sta. 202+00 to Sta. 205+00	68+60		
Sta. 205+00 to Sta. 208+00	69+59		
Sta. 208+00 to Sta. 211+00	70+58		
Sta. 211+00 to Sta. 214+00	71+57		
Sta. 214+00 to Sta. 217+00	72+56		
Sta. 217+00 to Sta. 220+00	73+55		
Sta. 220+00 to Sta. 223+00	74+54		
Sta. 223+00 to Sta. 226+00	75+53		
Sta. 226+00 to Sta. 229+00	76+52		
Sta. 229+00 to Sta. 232+00	77+51		
Sta. 232+00 to Sta. 235+00	78+50		
Sta. 235+00 to Sta. 238+00	79+49		
Sta. 238+00 to Sta. 241+00	80+48		
Sta. 241+00 to Sta. 244+00	81+47		
Sta. 244+00 to Sta. 247+00	82+46		
Sta. 247+00 to Sta. 250+00	83+45		
Sta. 250+00 to Sta. 253+00	84+44		
Sta. 253+00 to Sta. 256+00	85+43		
Sta. 256+00 to Sta. 259+00	86+42		
Sta. 259+00 to Sta. 262+00	87+41		
Sta. 262+00 to Sta. 265+00	88+40		
Sta. 265+00 to Sta. 268+00	89+39		
Sta. 268+00 to Sta. 271+00	90+38		
Sta. 271+00 to Sta. 274+00	91+37		
Sta. 274+00 to Sta. 277+00	92+36		
Sta. 277+00 to Sta. 280+00	93+35		
Sta. 280+00 to Sta. 283+00	94+34		
Sta. 283+00 to Sta. 286+00	95+33		
Sta. 286+00 to Sta. 289+00	96+32		
Sta. 289+00 to Sta. 292+00	97+31		
Sta. 292+00 to Sta. 295+00	98+30		
Sta. 295+00 to Sta. 298+00	99+29		
Sta. 298+00 to Sta. 301+00	100+28		

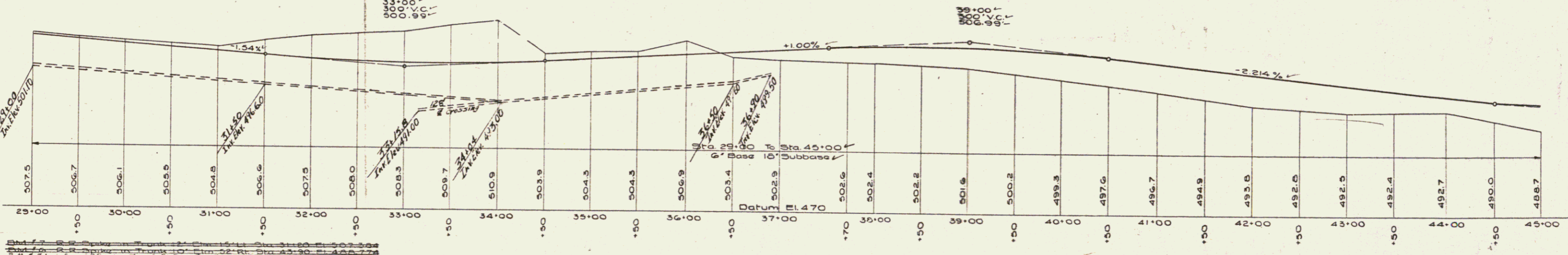
REMOVAL OF EXISTING CONCRETE PAVEMENT
0+33.73 - 13+00







PROFILE OF NEW INTERSECTION  
STA. 32+80=0+00 ON RT.



Removal of Existing Concrete Pavement  
29+00-38+00  
44+00-45+00

THREE CABLE GUARD RAIL WITH STEEL POSTS  
35+95 - 46+83 Right

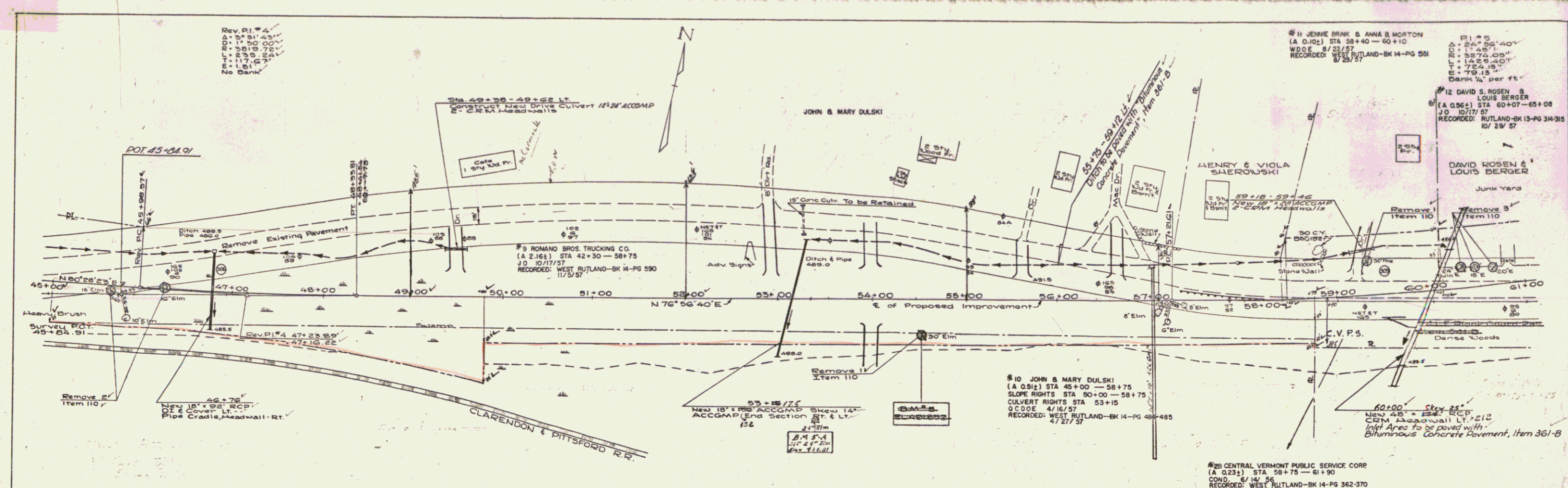
CONSTRUCT APPROACH  
32+80 Right

STEEL GUIDE POSTS  
Sta. Lt. Rt.  
33+25 1 7  
37+08 1 7  
41+08 1 7

REMOVAL AND DISPOSAL OF EXISTING GUARD RAIL  
33+00 - 41+00 Right

NOTE:

Part of agreement between State of Vermont and Clarendon and Pittsford Railroad Company dated 5 Sept, 1936. That for the work of installing culverts under the Railroad tracks, the Railroad shall have full responsibility for removing the rails and ties and for replacing rails, ties and ballast, such work shall be done by force account by the railroad, that the State or its duly authorized representative shall excavate for the culverts, lay culvert and backfill to sub-grade line. That all work for each culvert shall be performed during such hours as may be determined at a later date.



Rev. P1 #4  
 Δ: 5' 31" 43'  
 D: 1' 50" 00"  
 R: 5819.75'  
 L: 239.24'  
 T: 117.57'  
 E: 1.81'  
 No Bank

#11 JENNE BRINK & ANNA B. MORTON  
 (A 0.10) STA 58+40 - 60+10  
 W.D.E. 8/23/57  
 RECORDED: WEST RUTLAND-BK 14-PG 551  
 8/29/57

#12 DAVID S. ROSEN & LOUIS BERGER  
 (A 0.56) STA 50+07 - 65+08  
 JO 10/17/57  
 RECORDED: RUTLAND-BK 13-PG 34-35  
 10/29/57

DAVID ROSEN & LOUIS BERGER  
 Junk Yard

#10 JOHN & MARY DULSKI  
 (A 0.91) STA 45+00 - 58+75  
 SLOPE RIGHTS STA 50+00 - 58+75  
 CULVERT RIGHTS STA 53+15  
 R.C.O.D.E. 4/16/57  
 RECORDED: WEST RUTLAND-BK 14-PG 489-485  
 4/27/57

#25 CENTRAL VERMONT PUBLIC SERVICE CORP  
 (A 0.23) STA 58+75 - 61+90  
 COND. 6/14/56  
 RECORDED: WEST RUTLAND-BK 14-PG 362-370  
 8/16/56

#28 JOHN & JULIA WILK  
 SLOPE RIGHTS STA 58+75 - 61+75  
 CULVERT RIGHTS STA 50+20  
 GRADE CHANGE STA 61+00 - 62+50  
 W.D.E. 4/16/57  
 RECORDED: WEST RUTLAND-BK 14-PG 488-  
 4/27/57

CONSTRUCT APPROACH  
 52+25 &

REMOVAL & DISPOSAL OF  
 EXISTING GUARD RAIL  
 57+28 - 58+20 RT. L.  
 REMOVAL OF EXISTING CONCRETE PAVEMENT  
 43+00 - 38+00 -  
 58+00 - 61+00 -

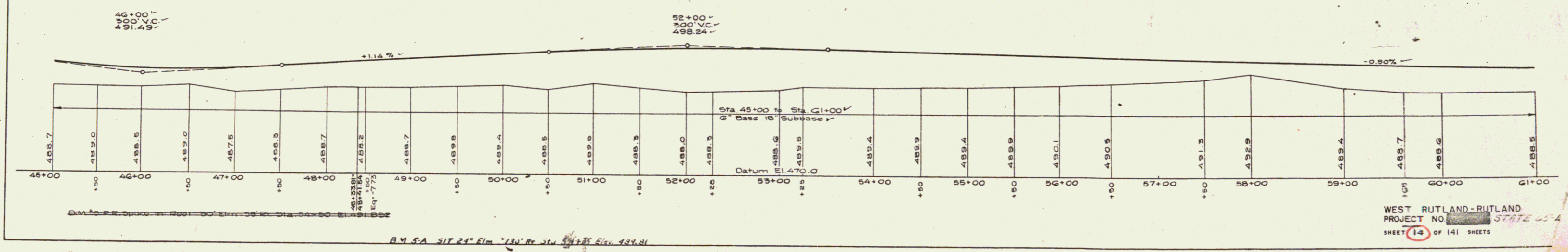
Top Soil  
 55+10 - 61+00

CONSTRUCT DRIVES

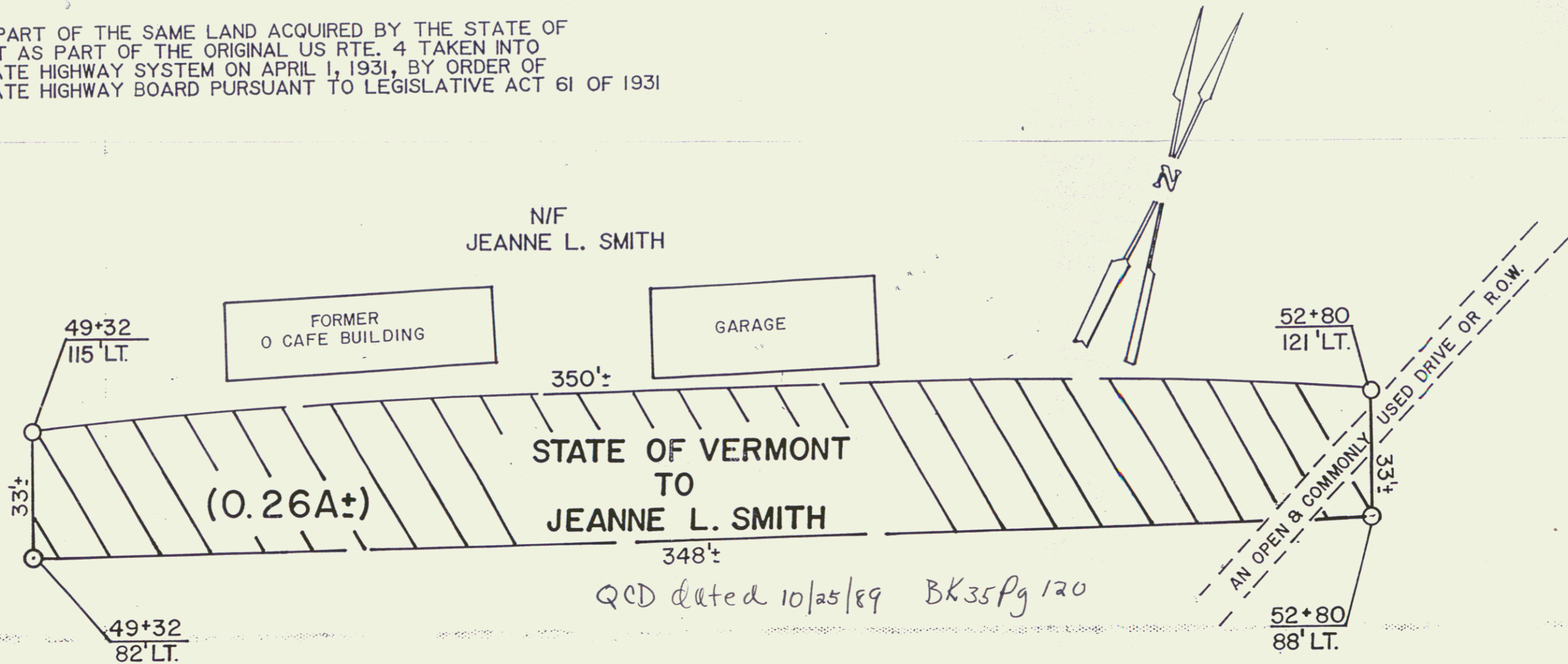
Sta	From	LT	RT
49+80.87	50+00	1	1
53+28.00	53+00	1	1
59+28.00	57+00	1	1
60+79	59+00	1	1
61+00	61+00	1	1
58+70	58+70	1	1
58+30	58+30	1	1
61+00	61+00	1	1

STEEL GUIDE POSTS

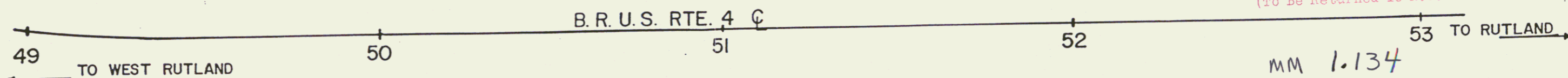
Sta	LT	RT
46+00	1	1
53+28	1	1
57+00	1	1
59+00	1	1
53+17	6	6



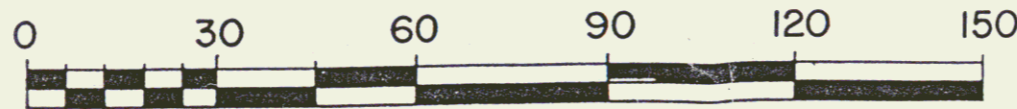
THIS IS PART OF THE SAME LAND ACQUIRED BY THE STATE OF VERMONT AS PART OF THE ORIGINAL US RTE. 4 TAKEN INTO THE STATE HIGHWAY SYSTEM ON APRIL 1, 1931, BY ORDER OF THE STATE HIGHWAY BOARD PURSUANT TO LEGISLATIVE ACT 61 OF 1931



RIGHT-OF-WAY DIVISION  
TOWN FILE  
PERPETUAL  
Town of West Rutland BRUS4  
(To Be Returned To R.O.W. Division)



SCALE 1" = 30'



REF SHEET 14 OF 141

STATE OF VERMONT  
AGENCY OF TRANSPORTATION

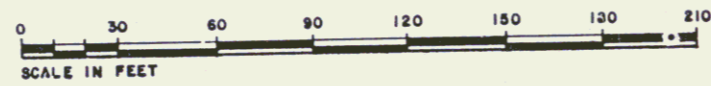
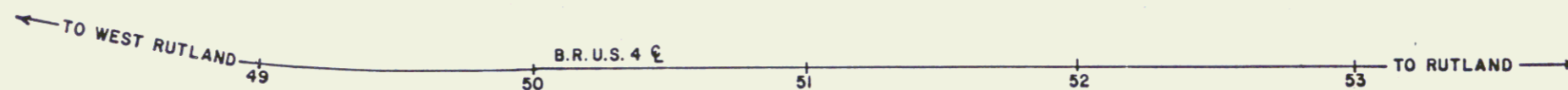
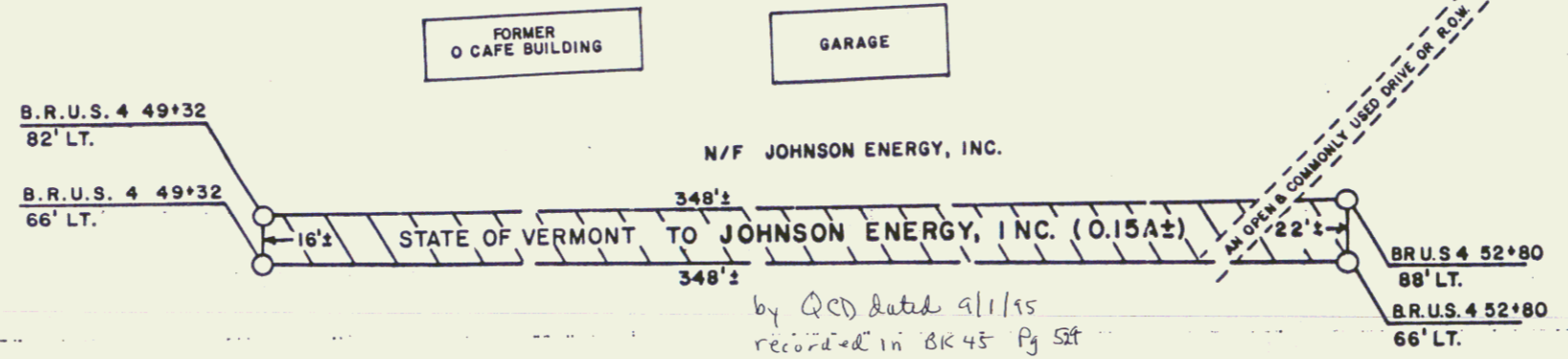
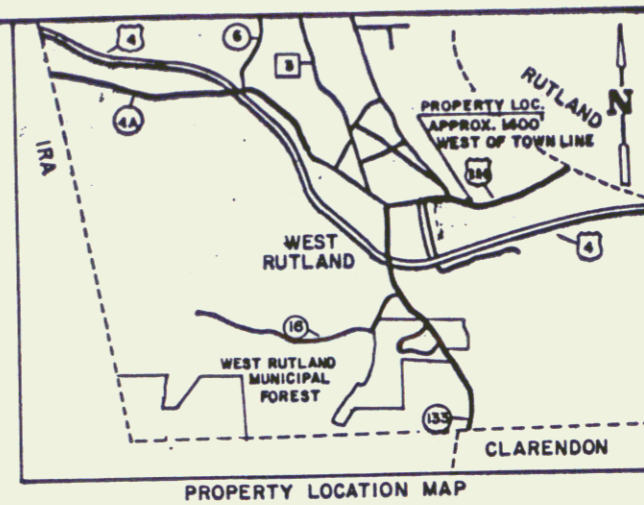
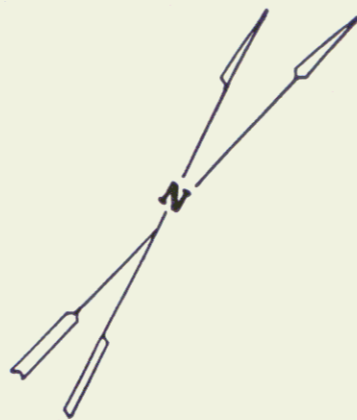
WEST RUTLAND

PROJECT: ST 65L

14A

APPROX. SCALE 1" = 30' DRAWN BY A.S.J. DATE 9/12/89

THIS IS PART OF THE SAME LAND ACQUIRED BY THE STATE OF VERMONT AS PART OF THE ORIGINAL US RTE. 4 TAKEN INTO THE STATE HIGHWAY SYSTEM ON APRIL 1, 1931, BY ORDER OF THE STATE HIGHWAY BOARD PURSUANT TO LEGISLATIVE ACT 61 OF 1931.



RIGHT-OF-WAY DIVISION  
TOWN FILE  
PERPETUAL  
Form of \_\_\_\_\_  
(To Be Returned To R.O.W. Division)

SHEET 14 OF 141  
REF. PROJ.: WEST RUTLAND-RUTLAND ST. 65 L

STATE OF VERMONT  
AGENCY OF TRANSPORTATION

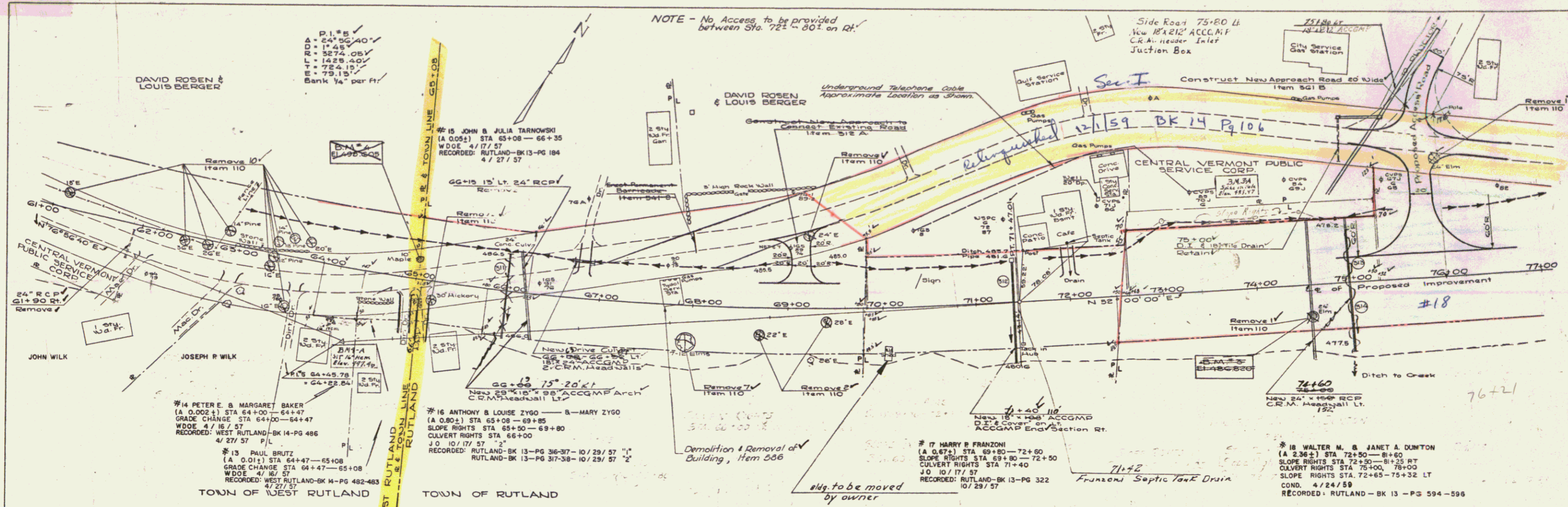
TOWN OF WEST RUTLAND

SCALE: 1" = 30'    DATE: 8-29-95    DRAWN BY: PJH

THIS IS AN ORIGINAL MYLAR

14B

8



STEEL GUIDE POSTS

Sta	LT	RT
65+00		
66+00		
67+00		
68+00		
69+00		
70+00		
71+00		
72+00		
73+00		

CONSTRUCT DRIVES

Sta	Pos.
61+00	RT
61+25	LT
62+10	RT
62+25	LT
63+10	RT
63+25	LT
64+10	RT
64+25	LT

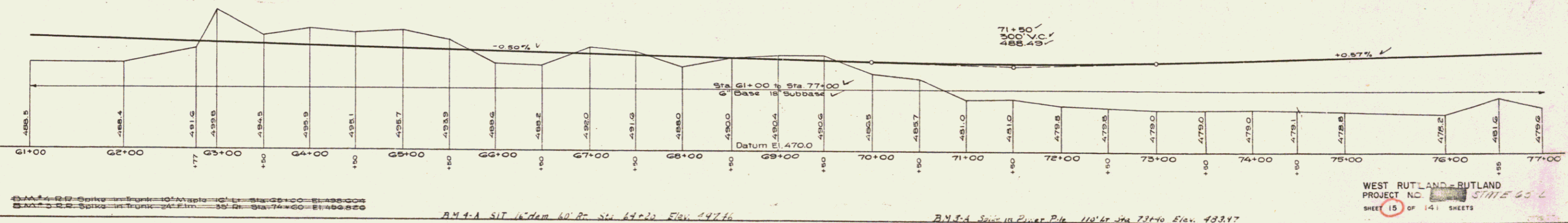
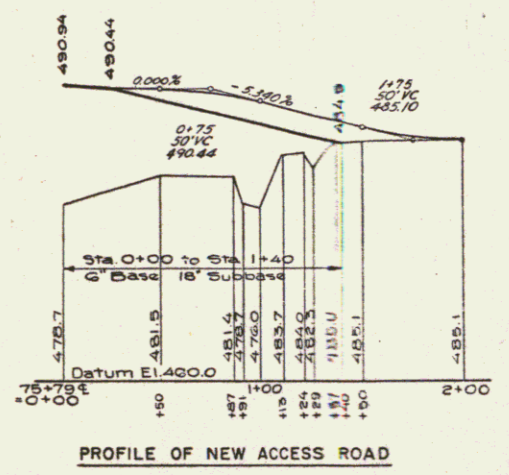
CONSTRUCT APPROACH

Sta	Pos.
68+00	RT
68+15	LT
67+85	LT

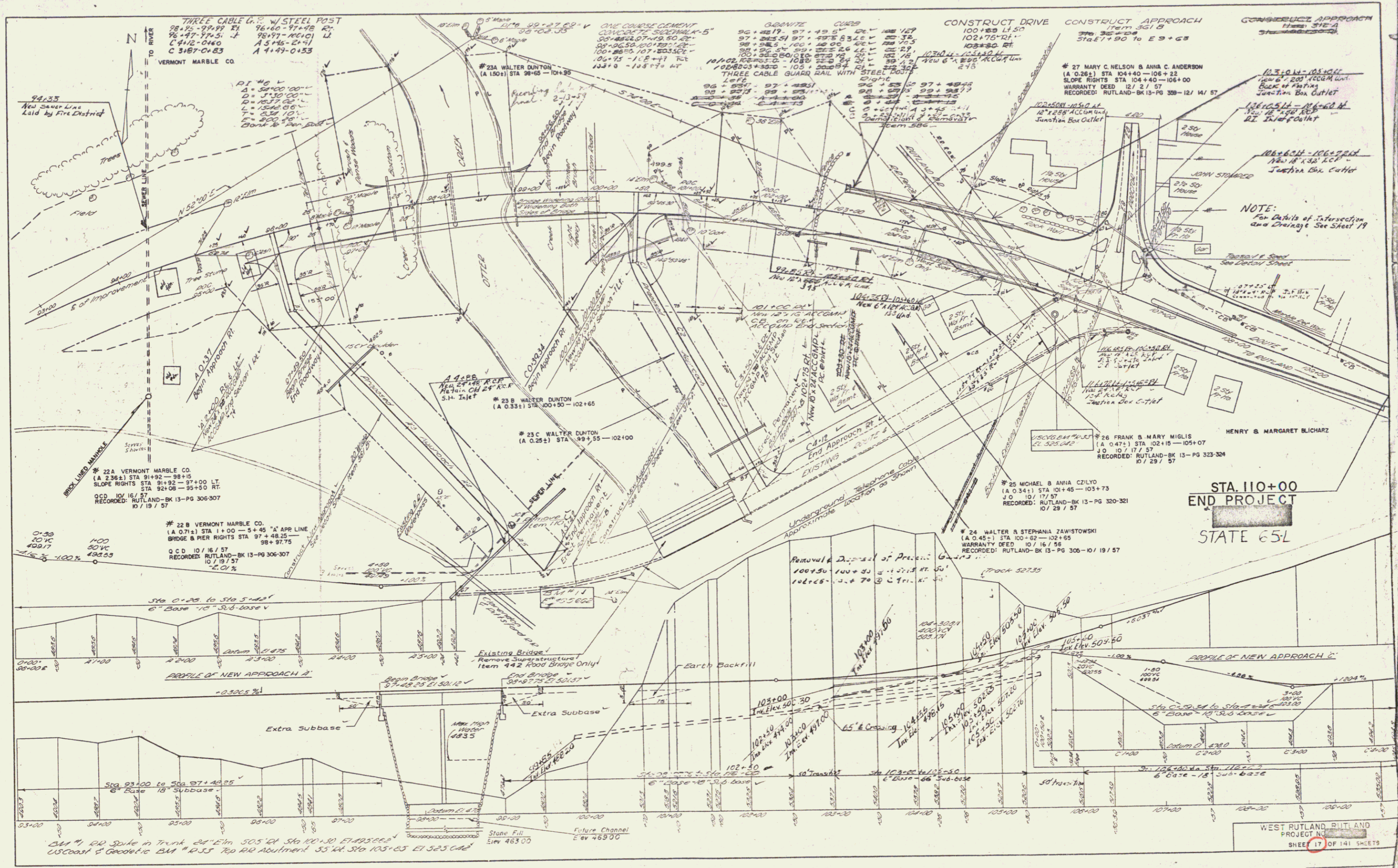
REMOVAL OF EXISTING CONCRETE PAVEMENT  
 62+77 - 63+00  
 69+00 - 71+50

GRANITE CURB  
 70+00 Ft. 56'  
 TOP SOIL  
 61+50 - 66+00 Rt.  
 66+00 - 67+10 Lt.

Note: - Sta. 64+11 - 64+01 Rt.  
 Stone Wall to be removed by Grantor and rebuilt on taking line after construction of proposed highway.





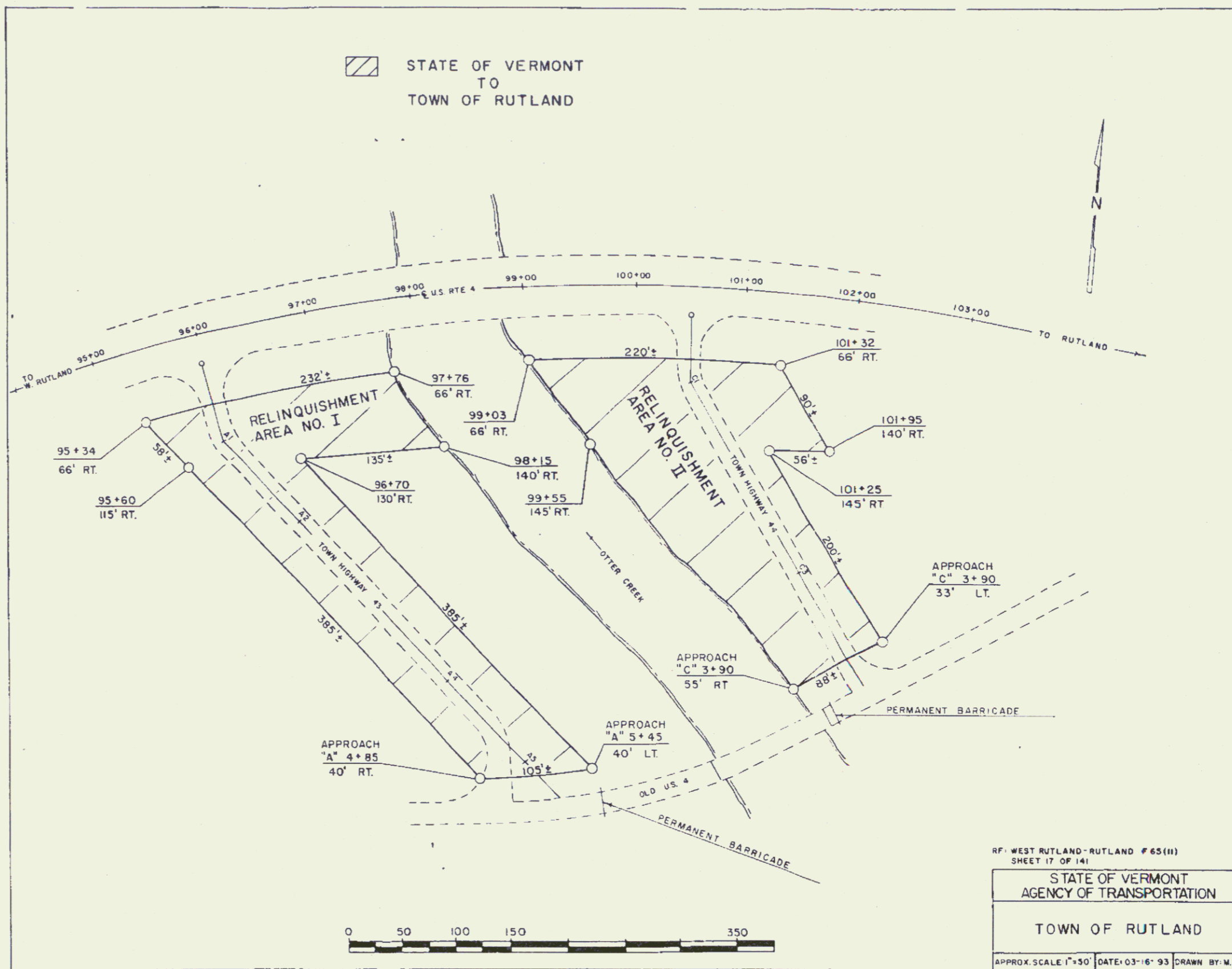


NOTE:  
For Details of Intersection  
and Drainage See Sheet 19

STA. 110+00  
END PROJECT  
STATE 65-L

WEST RUTLAND, RUTLAND  
PROJECT NO. 11  
SHEET 17 OF 141 SHEETS

STATE OF VERMONT  
TO  
TOWN OF RUTLAND

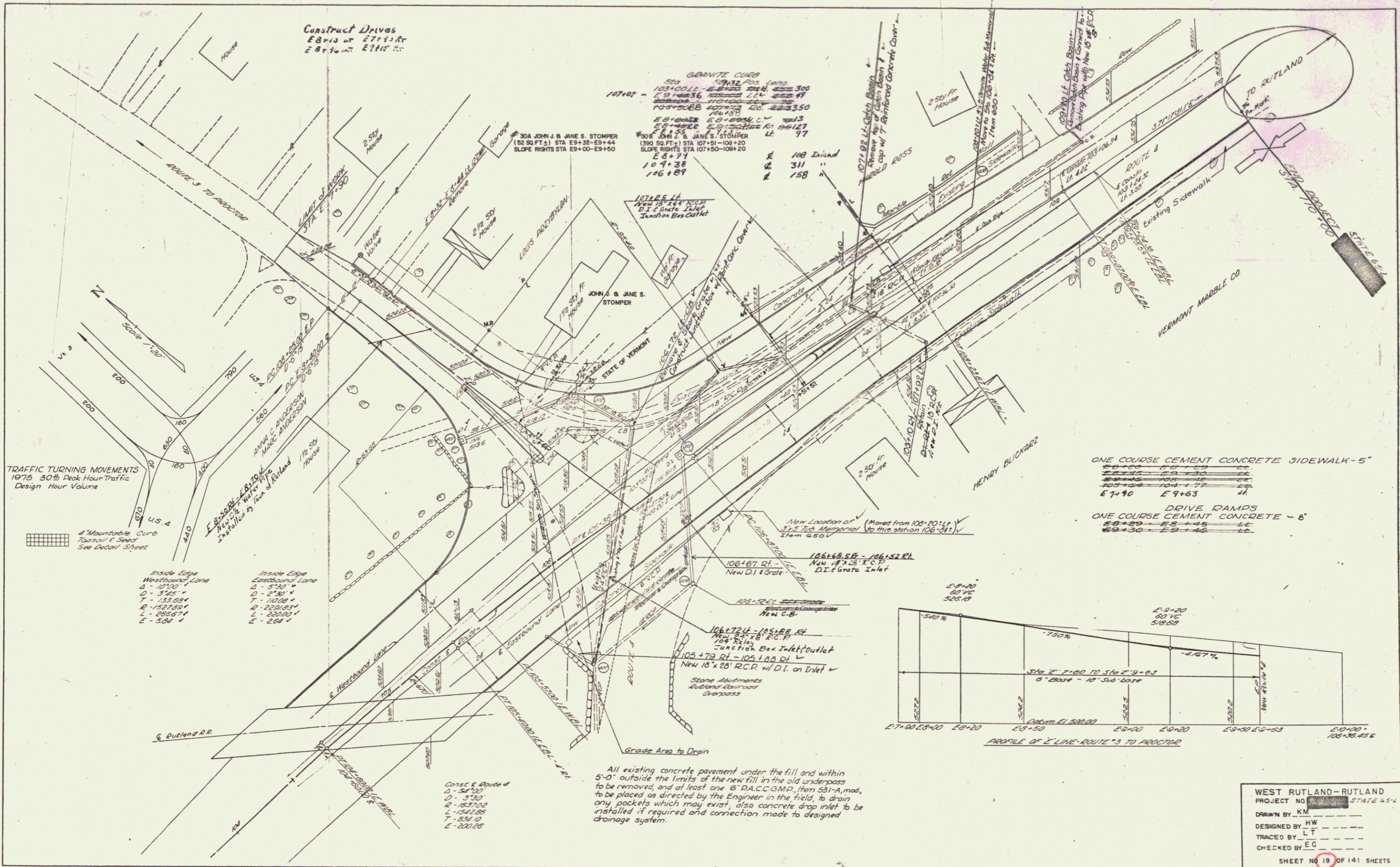


RF. WEST RUTLAND-RUTLAND #65(H)  
SHEET 17 OF 141  
STATE OF VERMONT  
AGENCY OF TRANSPORTATION  
TOWN OF RUTLAND  
APPROX. SCALE: 1"=50' DATE: 03-16-93 DRAWN BY: M.R.



17A





Construct Drives  
 E 8110 at E 7110 R  
 E 8110 at E 7110 R

GRANITE CURB  
 500' 5" 1/2  
 107107 - 107108  
 107108 - 107109  
 107109 - 107110  
 107110 - 107111  
 107111 - 107112  
 107112 - 107113  
 107113 - 107114  
 107114 - 107115  
 107115 - 107116  
 107116 - 107117  
 107117 - 107118  
 107118 - 107119  
 107119 - 107120  
 107120 - 107121  
 107121 - 107122  
 107122 - 107123  
 107123 - 107124  
 107124 - 107125  
 107125 - 107126  
 107126 - 107127  
 107127 - 107128  
 107128 - 107129  
 107129 - 107130  
 107130 - 107131  
 107131 - 107132  
 107132 - 107133  
 107133 - 107134  
 107134 - 107135  
 107135 - 107136  
 107136 - 107137  
 107137 - 107138  
 107138 - 107139  
 107139 - 107140  
 107140 - 107141  
 107141 - 107142  
 107142 - 107143  
 107143 - 107144  
 107144 - 107145  
 107145 - 107146  
 107146 - 107147  
 107147 - 107148  
 107148 - 107149  
 107149 - 107150  
 107150 - 107151  
 107151 - 107152  
 107152 - 107153  
 107153 - 107154  
 107154 - 107155  
 107155 - 107156  
 107156 - 107157  
 107157 - 107158  
 107158 - 107159  
 107159 - 107160  
 107160 - 107161  
 107161 - 107162  
 107162 - 107163  
 107163 - 107164  
 107164 - 107165  
 107165 - 107166  
 107166 - 107167  
 107167 - 107168  
 107168 - 107169  
 107169 - 107170  
 107170 - 107171  
 107171 - 107172  
 107172 - 107173  
 107173 - 107174  
 107174 - 107175  
 107175 - 107176  
 107176 - 107177  
 107177 - 107178  
 107178 - 107179  
 107179 - 107180  
 107180 - 107181  
 107181 - 107182  
 107182 - 107183  
 107183 - 107184  
 107184 - 107185  
 107185 - 107186  
 107186 - 107187  
 107187 - 107188  
 107188 - 107189  
 107189 - 107190  
 107190 - 107191  
 107191 - 107192  
 107192 - 107193  
 107193 - 107194  
 107194 - 107195  
 107195 - 107196  
 107196 - 107197  
 107197 - 107198  
 107198 - 107199  
 107199 - 107200  
 107200 - 107201  
 107201 - 107202  
 107202 - 107203  
 107203 - 107204  
 107204 - 107205  
 107205 - 107206  
 107206 - 107207  
 107207 - 107208  
 107208 - 107209  
 107209 - 107210  
 107210 - 107211  
 107211 - 107212  
 107212 - 107213  
 107213 - 107214  
 107214 - 107215  
 107215 - 107216  
 107216 - 107217  
 107217 - 107218  
 107218 - 107219  
 107219 - 107220  
 107220 - 107221  
 107221 - 107222  
 107222 - 107223  
 107223 - 107224  
 107224 - 107225  
 107225 - 107226  
 107226 - 107227  
 107227 - 107228  
 107228 - 107229  
 107229 - 107230  
 107230 - 107231  
 107231 - 107232  
 107232 - 107233  
 107233 - 107234  
 107234 - 107235  
 107235 - 107236  
 107236 - 107237  
 107237 - 107238  
 107238 - 107239  
 107239 - 107240  
 107240 - 107241  
 107241 - 107242  
 107242 - 107243  
 107243 - 107244  
 107244 - 107245  
 107245 - 107246  
 107246 - 107247  
 107247 - 107248  
 107248 - 107249  
 107249 - 107250  
 107250 - 107251  
 107251 - 107252  
 107252 - 107253  
 107253 - 107254  
 107254 - 107255  
 107255 - 107256  
 107256 - 107257  
 107257 - 107258  
 107258 - 107259  
 107259 - 107260  
 107260 - 107261  
 107261 - 107262  
 107262 - 107263  
 107263 - 107264  
 107264 - 107265  
 107265 - 107266  
 107266 - 107267  
 107267 - 107268  
 107268 - 107269  
 107269 - 107270  
 107270 - 107271  
 107271 - 107272  
 107272 - 107273  
 107273 - 107274  
 107274 - 107275  
 107275 - 107276  
 107276 - 107277  
 107277 - 107278  
 107278 - 107279  
 107279 - 107280  
 107280 - 107281  
 107281 - 107282  
 107282 - 107283  
 107283 - 107284  
 107284 - 107285  
 107285 - 107286  
 107286 - 107287  
 107287 - 107288  
 107288 - 107289  
 107289 - 107290  
 107290 - 107291  
 107291 - 107292  
 107292 - 107293  
 107293 - 107294  
 107294 - 107295  
 107295 - 107296  
 107296 - 107297  
 107297 - 107298  
 107298 - 107299  
 107299 - 107300

TRAFFIC TURNING MOVEMENTS  
 1975 30th Peak Hour Traffic  
 Design Hour Volume

4' Mountable Curb  
 Topsoil & Seed  
 See Detail Sheet

Inside Edge  
 Westbound Lane  
 A - 1020' +  
 B - 310' +  
 C - 133.08' +  
 D - 152.73' +  
 E - 255.97' +  
 F - 304' +

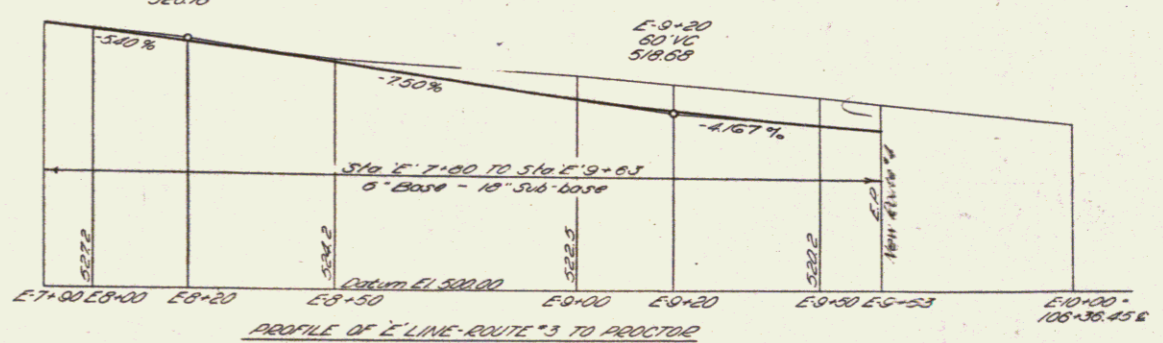
Inside Edge  
 Eastbound Lane  
 A - 330' +  
 B - 640' +  
 C - 1028' +  
 D - 230.08' +  
 E - 330.08' +  
 F - 284' +

Const. & Grade of  
 A - 347.50  
 B - 330  
 C - 102.70  
 D - 104.00  
 E - 220.25

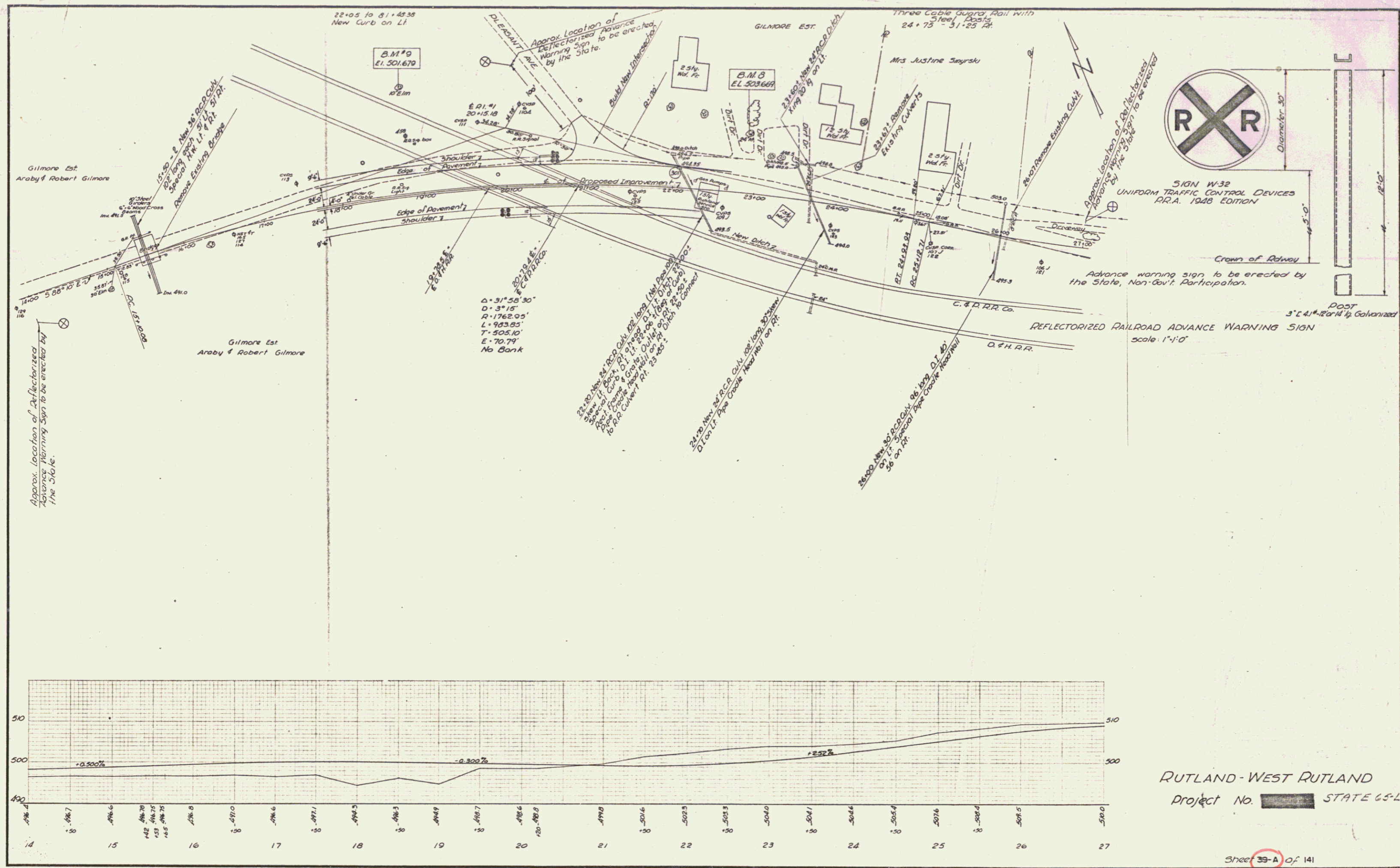
All existing concrete pavement under the fill and within 5'-0" outside the limits of the new fill in the old underpass to be removed, and at least one 6" DACCGMP, Item 531-A, mat, to be placed as directed by the Engineer in the field, to drain any pockets which may exist, also concrete drop inlet to be installed if required and connection made to designed drainage system.

ONE COURSE CEMENT CONCRETE SIDEWALK - 5"  
 E 7+00 - E 7+10  
 E 7+10 - E 7+20  
 E 7+20 - E 7+30  
 E 7+30 - E 7+40  
 E 7+40 - E 7+50  
 E 7+50 - E 7+60  
 E 7+60 - E 7+70  
 E 7+70 - E 7+80  
 E 7+80 - E 7+90  
 E 7+90 - E 7+100

DRIVE RAMPS  
 ONE COURSE CEMENT CONCRETE - 8"  
 E 7+20 - E 7+30  
 E 7+30 - E 7+40  
 E 7+40 - E 7+50  
 E 7+50 - E 7+60  
 E 7+60 - E 7+70  
 E 7+70 - E 7+80  
 E 7+80 - E 7+90  
 E 7+90 - E 7+100



WEST RUTLAND - RUTLAND  
 PROJECT NO. [REDACTED] STATE 65-A  
 DRAWN BY: KM  
 DESIGNED BY: LT  
 TRACED BY: EC  
 CHECKED BY: EC  
 SHEET NO. 19 OF 141 SHEETS



SIGN W-32  
UNIFORM TRAFFIC CONTROL DEVICES  
R.R.A. 1940 EDITION

Advance warning sign to be erected by the State, Non-Gov't. Participation.

REFLECTORIZED RAILROAD ADVANCE WARNING SIGN  
scale: 1"=10'

RUTLAND-WEST RUTLAND  
Project No. [redacted] STATE 65-L