

CONSTRUCT DRIVE
 187+34
 187+81 To Centerline
 191+35
 194+60
 195+80
 197+06

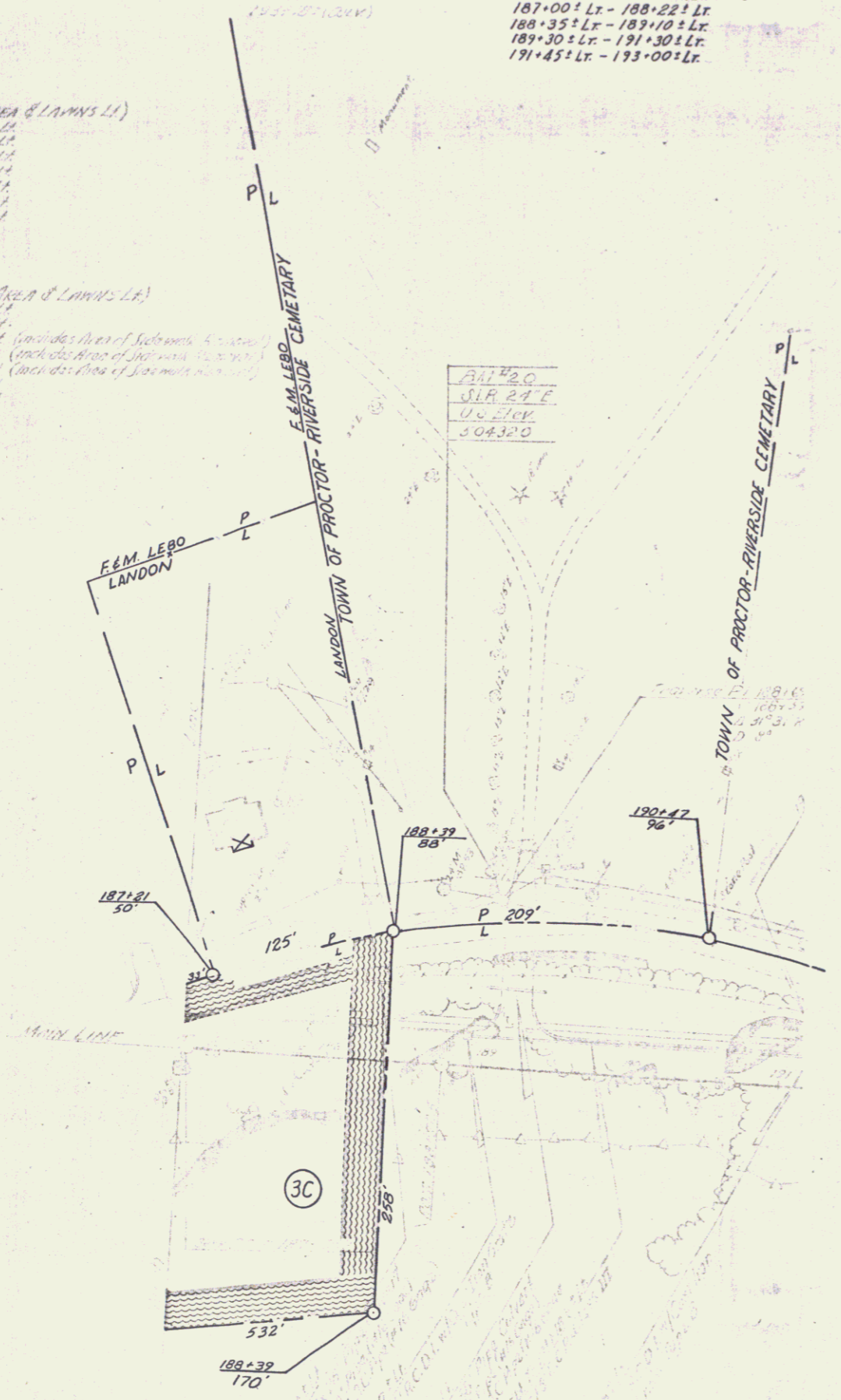
FERTILIZER &
 SEEDING URBAN AREA & LAWNS (L)
 187+00 LL - 188+22 LL
 188+30 LL - 189+10 LL
 189+31 LL - 191+30 LL
 191+42 LL - 194+54 LL
 194+66 LL - 195+42 LL
 195+58 LL - 196+96 LL

TOP SOIL (URBAN AREA & LAWNS L)
 187+00 LL - 188+22 LL
 188+30 LL - 189+10 LL
 189+31 LL - 191+30 LL (includes Area of Subways & Sewers)
 191+42 LL - 194+54 LL (includes Area of Subways & Sewers)
 194+66 LL - 195+42 LL (includes Area of Subways & Sewers)
 195+58 LL - 196+96 LL

EXCAVATION & REMOVAL OF
 ROAD SURFACES & OR PAVEMENTS
 187+00 LL - 188+22 LL
 188+35 LL - 189+10 LL
 189+30 LL - 191+30 LL
 191+45 LL - 193+00 LL

CURB
 187+00 LL - 188+28 LL
 188+40 LL - 189+11 LL
 189+31 LL - 191+30 LL
 191+42 LL - 194+54 LL
 194+66 LL - 195+42 LL
 195+58 LL - 196+96 LL

ONE COURSE 5" CEMENT CONCRETE SIDEWALK
 187+00 LL To 189+11 LL
 189+31 LL To 196+96 LL
 191+78 LL (WALK TO HOUSE)



CONSTRUCTION NOTES:
 FROM STA. 187+00 LL TO 195+40 LL, THE
 AREA FROM DITCH LT TO NEAR EDGE OF LAWNS
 (MAXIMUM DISTANCE OF 135' LL) IS TO BE
 GRADED AND RESHAPED WITH BORROW FROM 10M;
 2" TOPSOIL, AND FERTILIZER AND GRASS SEED;
 AS DIRECTED BY THE ENGINEER.
 PRESENT SIDEWALK AT STA. 189+35 LL TO
 STA. 196+96 LL IS TO BE REMOVED UNDER
 COMMON EXCAVATION - ITEM 103-A1



VERMONT DEPARTMENT OF HIGHWAYS
 RIGHT-OF-WAY PLANS
 PROJECT - RUTLAND-PROCTOR
 No. S 0163 (1)
 SHEET 30 OF 45