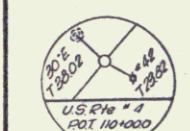


US Rte # 4 DATA
 PI 99+2769
 Δ 34'00" 24'
 D 3° 30' V
 R 1637.02
 T 834.10
 L 1542.86
 E 200.76

M.L. POT. 0+148.8"
 U.S. Rte # 4 P.O.C. 100+500
 Project S-0163(1)

US Rte # 4 P.O.C. 103+50.0



Begin Relinquishment

Control of Section of old
 Vt. Rte. 3, beginning at U.S. Rte. 4 Sta.
 100+20 and extending northerly
 on Vt. Rte. 3 for 0.77 mi. to a point
 90 ft. west of M.L. Sta. 31+40, is hereby
 relinquished to the town of Rutland, Vt. that
 portion of its connection between the former
 State highway and the present beginning 50 ft.
 distance west of M.L. Sta. 23+00 and continuing
 25 ft. to a point in center of former State
 highway designated as U.S. Rte. Rte. 2+37.0,
 as shown on Vt. plan sheets 27, 43, and
 recorded by the town clerk on Mar. 10, 1923, in
 book 18, page 463 of Land Records

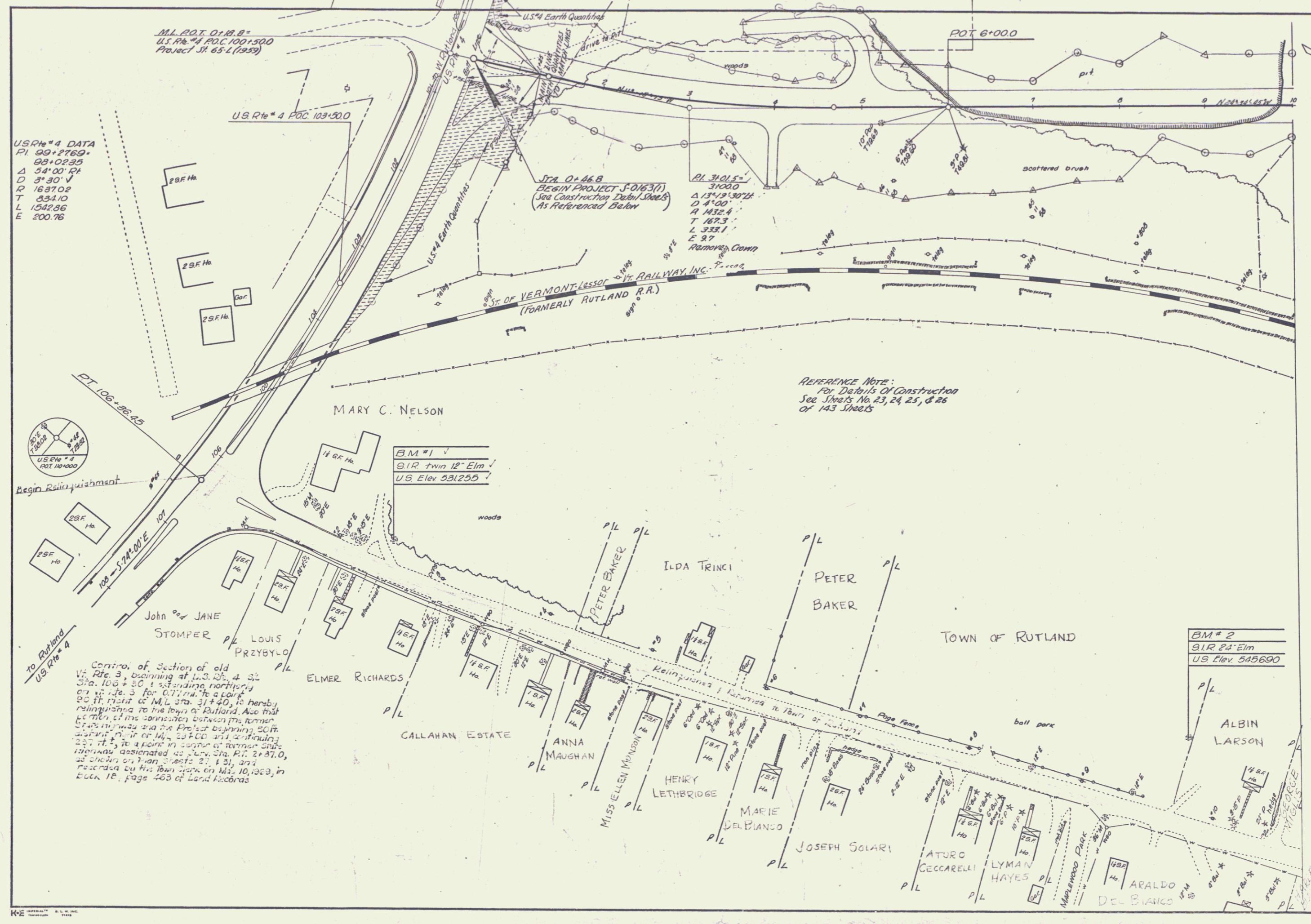
STA. 0+46.8
 BEGIN PROJECT S-0163(1)
 (See Construction Detail Sheets
 As Referenced Below)

PI 31+01.5"
 3100.0
 Δ 13° 19' 30" H
 D 4' 00"
 R 1432.4
 T 167.3
 L 333.1
 E 27

REFERENCE NOTE:
 For Details of Construction
 See Sheets No. 23, 24, 25, & 26
 of 143 Sheets

BM # 1
 31R twin 12" Elm
 US Elev 531255

BM # 2
 31R 2 1/2" Elm
 US Elev 545690



For Reference Only

EXTENDED PLAN DETAIL
 OF PRESENT HIGHWAY RT.

SCALE
 0 50 100
 1" = 100 Feet

SURVEYED BY Martin DATE 2-64
 DRAWN BY Lawman DATE 2-64
 TRACED BY Lawman DATE 2-64
RUTLAND-PROCTOR
 PROJ. S NO. 0163(1)
 SHEET 27 OF 143