

FED. ROAD DIST. NO.	STATE	PROJECT NO.	YEAR	SHEET NO.	TOTAL SHEETS
118 A	VA	118 A	1928	3	24

WOOD GUARD RAIL REQUIRED
 ON LEFT
 STA 8+83 TO STA 9+33 LENGTH 50 FT
 STA 8+10 TO STA 8+57 " 47 FT
 " 9+33 " " 9+57 " 24 FT
ELEVATION
 STA 8+83 TO STA 9+33 LENGTH 54 FT
 STA 8+10 TO STA 8+57 " 47 FT
 " 9+33 " " 9+57 " 24 FT

NEW CULVERTS REQUIRED
 STA 0+81 Present 24x25 Elev. Conc. Box to be extended
 Concrete Class A (1-2-4) 243 Lbs.
 Reinforcing Steel 243 Lbs.
 STA 6+66 Present 4x5 Elev. Conc. Box to be extended
 Concrete Class A (1-2-4) 49 Lbs.
 Reinforcing Steel 49 Lbs.
 STA 9+65 Present 31.5 Elev. Conc. Box to be extended
 and 2nd floor to be constructed
 Concrete Class A (1-2-4) 130 Concr. 1000 Lbs.
 Reinforcing Steel

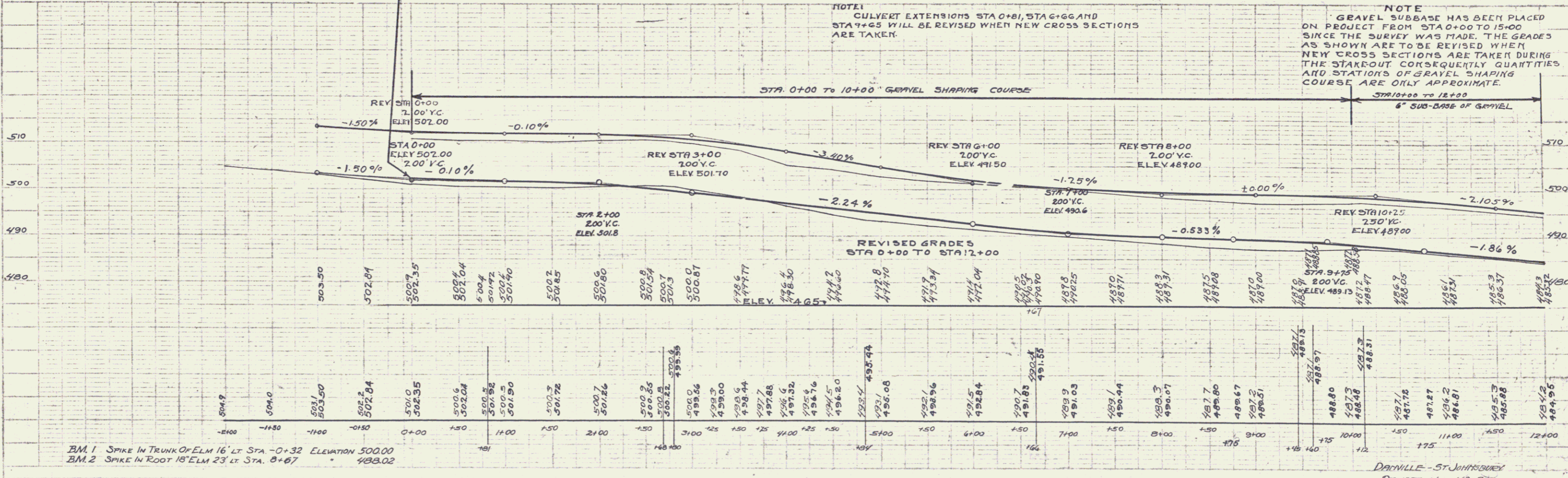
PLAN
 SCALE: 1" = 40'
 DATE: 11/18/28
 BY: J. W. McGRIVIE

PROFILE
 SCALE: 1" = 10'
 DATE: 11/18/28
 BY: J. W. McGRIVIE

STA. 0+00
 BEGINNING OF PROJECT

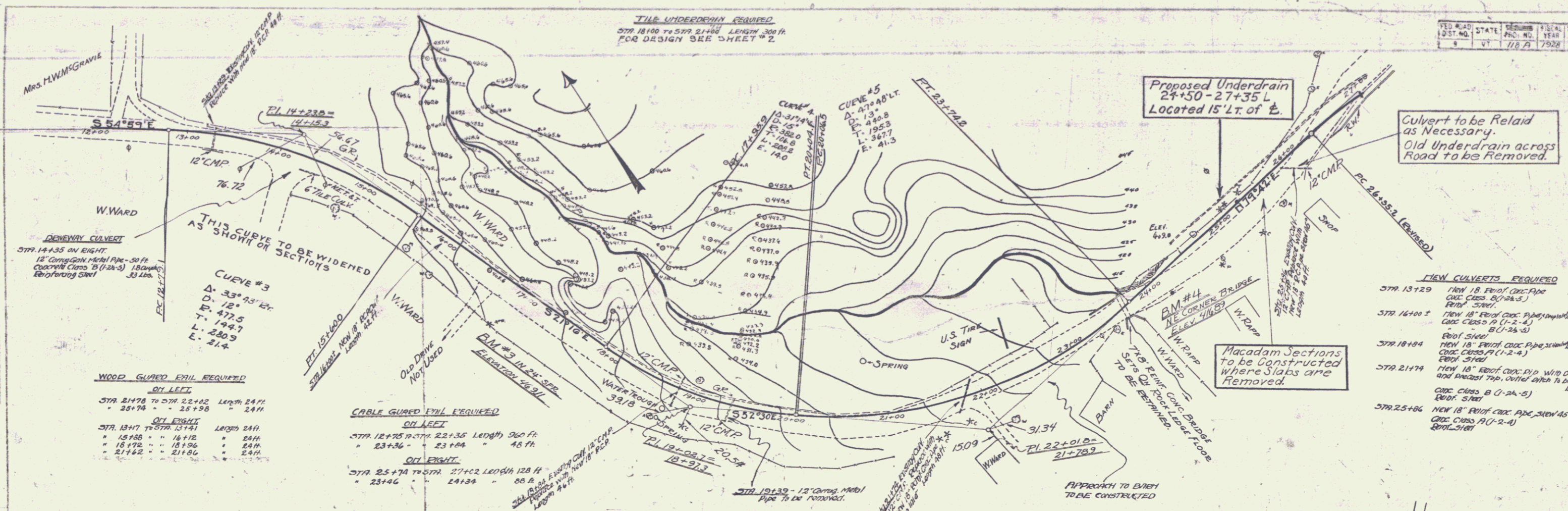
CURVE #1
 $\Delta = 12^\circ 12' 12''$
 $D = 0'$
 $T = 74.5$
 $L = 152.5$
 $E = 40$
 $R = 714.3$

CURVE #2
 $\Delta = 3^\circ 50'$
 $D = 3'$
 $T = 661$
 $L = 132.2$
 $E = 13$
 $R = 1910$



BM. 1 SPIKE IN TRUNK OF ELM 16' LT STA -0+32 ELEVATION 500.00
 BM. 2 SPIKE IN ROOT 18' ELM 23' LT STA. 0+67 " 488.02

DAIRVILLE - ST. JOHNSBURGH
 PROJECT NO. 118 A
 SHEET 3 of 24



WOOD GUARD FENCE REQUIRED

ON LEFT

STA 2478 TO STA 22+02	LENGTH 24 FT
20+78	24 FT

ON RIGHT

STA 13+17 TO STA 12+31	LENGTH 24 FT
15+88	24 FT
18+72	24 FT
21+56	24 FT

CABLE GUARD FENCE REQUIRED

ON LEFT

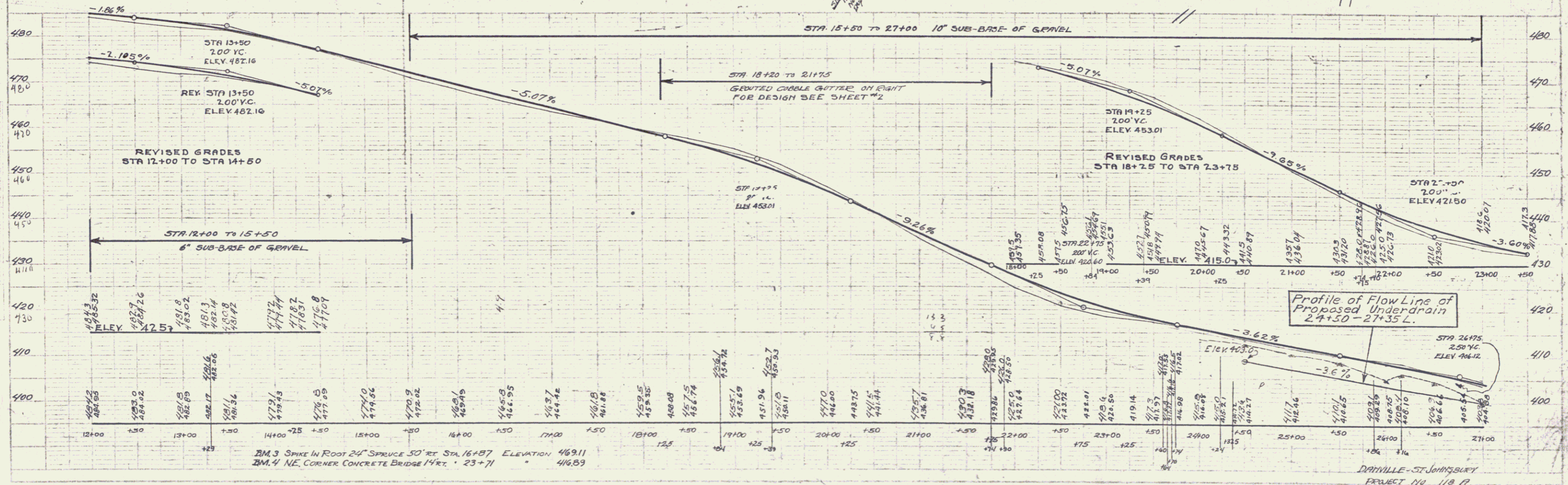
STA 12+75 TO STA 22+35	LENGTH 90 FT
23+36	48 FT

ON RIGHT

STA 25+74 TO STA 27+02	LENGTH 128 FT
25+46	88 FT

NEW CULVERTS REQUIRED

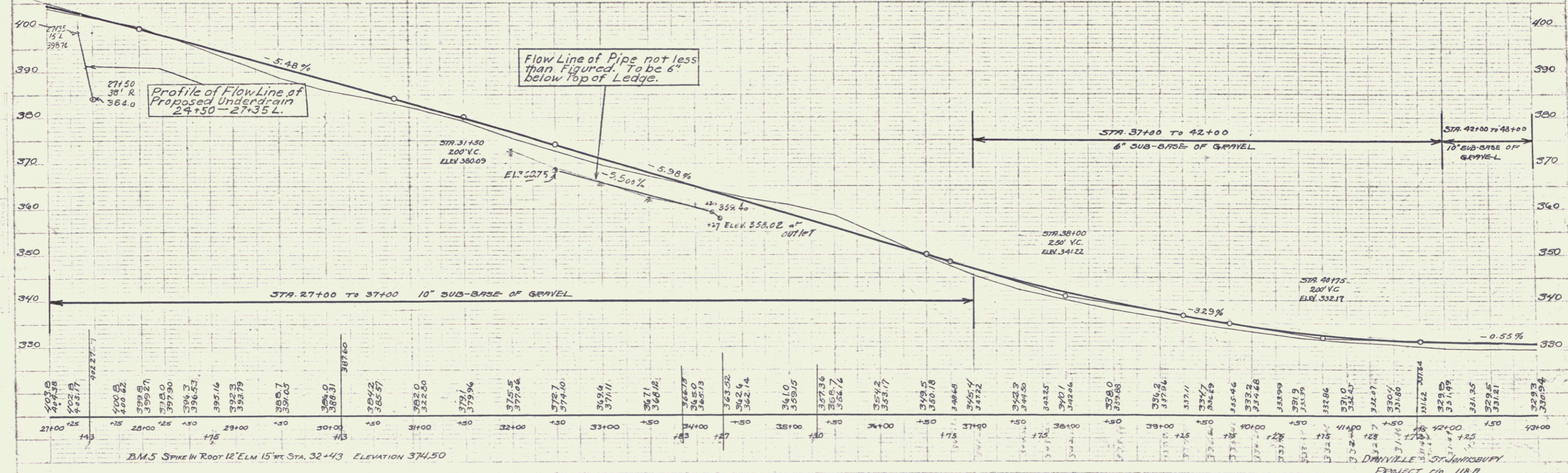
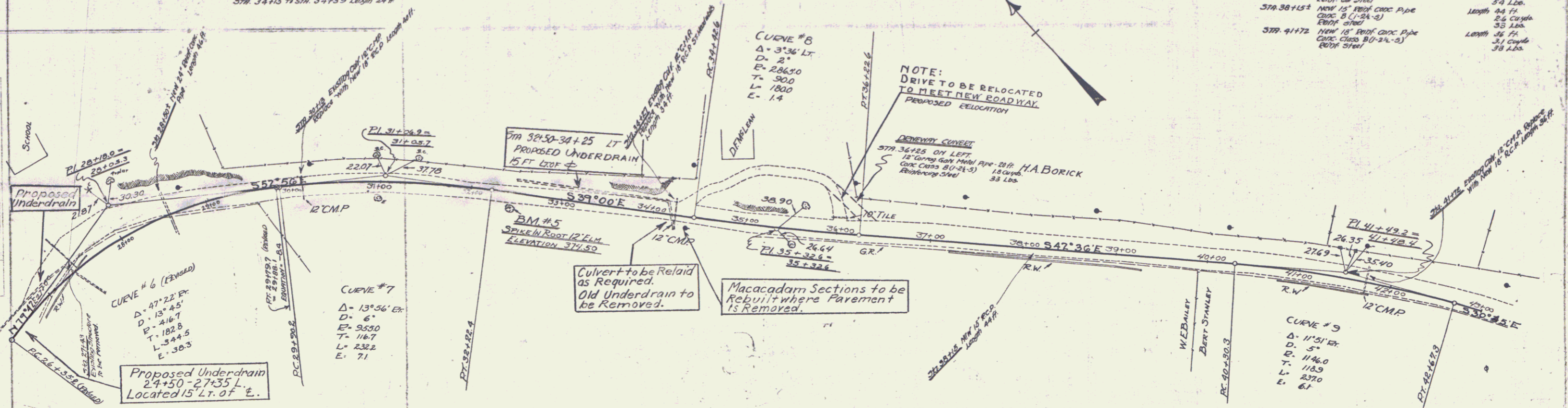
STA 13+29	NEW 18" RIBBON CONC. PIPE	LENGTH 40 FT	3.4 CUBIC YD.
	CONC. CLASS B (1-2-4)		3.3 LBS.
STA 16+00	NEW 18" RIBBON CONC. PIPE	LENGTH 42 FT	3.5 CUBIC YD.
	CONC. CLASS A (1-2-4)		3.4 LBS.
STA 18+04	NEW 18" RIBBON CONC. PIPE	LENGTH 40 FT	3.4 CUBIC YD.
	CONC. CLASS A (1-2-4)		3.3 LBS.
STA 21+74	NEW 18" RIBBON CONC. PIPE	LENGTH 40 FT	3.4 CUBIC YD.
	CONC. CLASS B (1-2-4)		3.3 LBS.
STA 25+06	NEW 18" RIBBON CONC. PIPE	LENGTH 40 FT	3.4 CUBIC YD.
	CONC. CLASS A (1-2-4)		3.3 LBS.



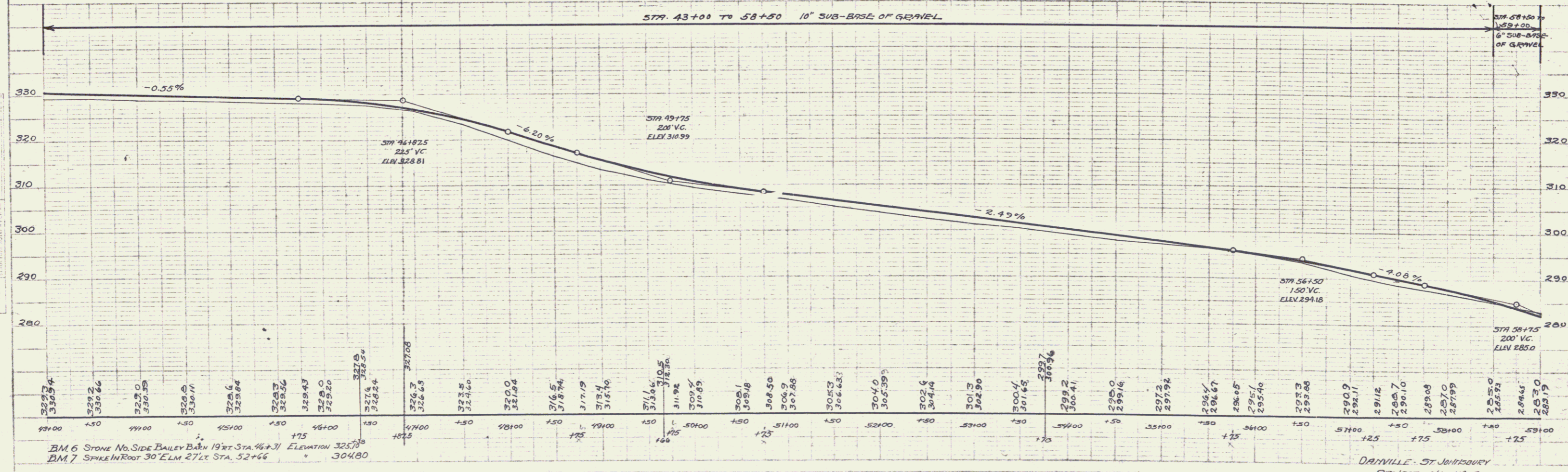
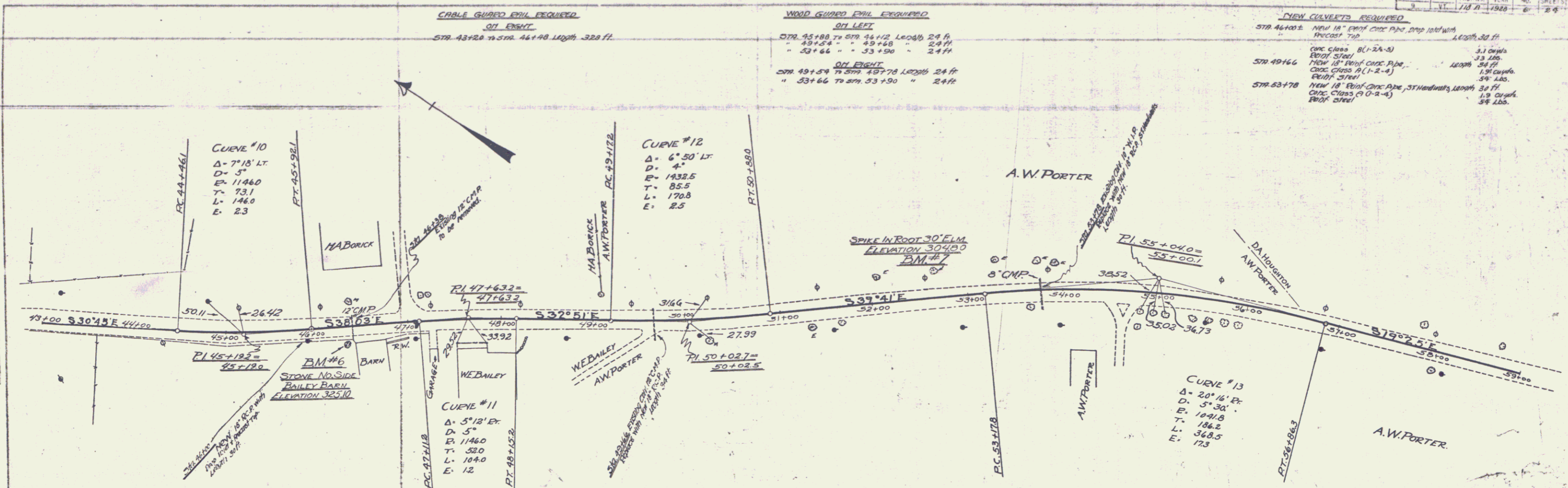
Mrs. H.W.M. GRAVE
 W.WARD
 V.WARD
 U.S. TIRE SIGN
 O-SPRING
 BANK
 APPROACH TO BRIDGE TO BE CONSTRUCTED

WOOD GUARD RAIL REQUIRED			CABLE GUARD RAIL REQUIRED		
ON LEFT			ON RIGHT		
STA. 27+31 TO STA. 27+55	Length 24 ft		STA. 27+00 TO STA. 35+00	Length 800 ft	
30+01	30+25	24 ft	36+50	42+50	600 ft
34+05	34+30	24 ft			
38+03	38+27	24 ft			
41+60	41+84	24 ft			
ON RIGHT			ON LEFT		
STA. 34+15 TO STA. 34+39	Length 24 ft				

NEW CULVERTS PROPOSED		
STA. 28+90.1	NEW 24" REEF CONC PIPE CULV CLASS (11-2-4) PROF. 5700	Length 26 ft 2.6 Cuyds
STA. 30+13	NEW 18" REEF CONC PIPE CULV CLASS (11-2-4) PROF. 5700	Length 48 ft 4.8 Cuyds
STA. 34+27	NEW 18" REEF CONC PIPE, STRUCTURAL CULV CLASS (1-2-4) PROF. 5700	Length 34 ft 3.4 Cuyds
STA. 38+15.1	NEW 15" REEF CONC PIPE CULV CLASS (1-2-4) PROF. 5700	Length 44 ft 4.4 Cuyds
STA. 41+72	NEW 18" REEF CONC PIPE CULV CLASS (11-2-4) PROF. 5700	Length 36 ft 3.6 Cuyds

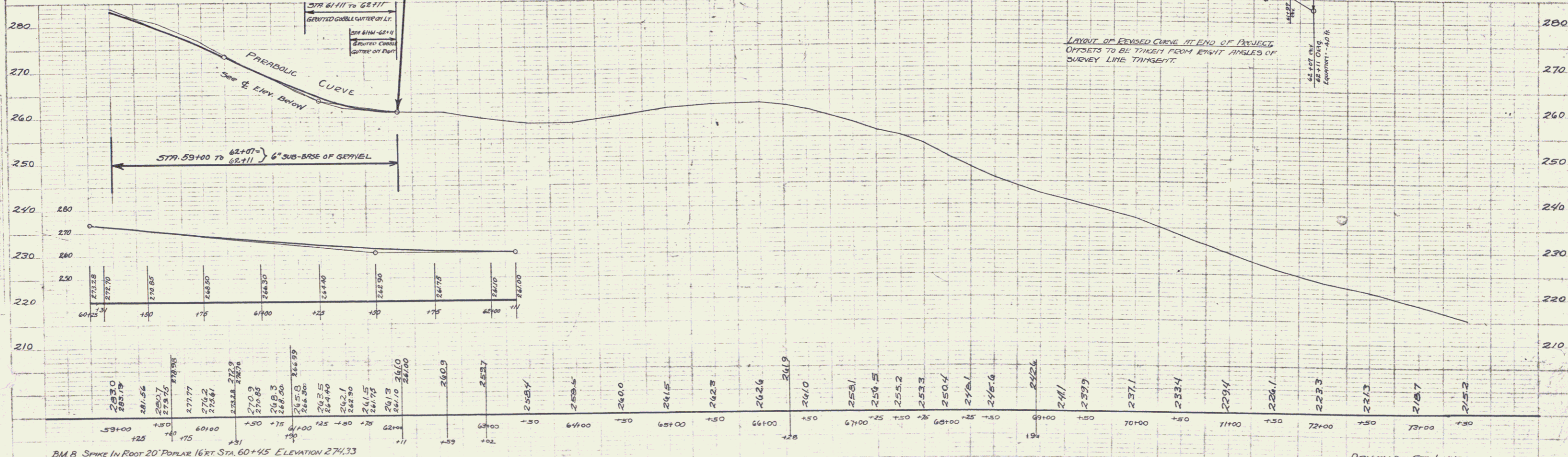
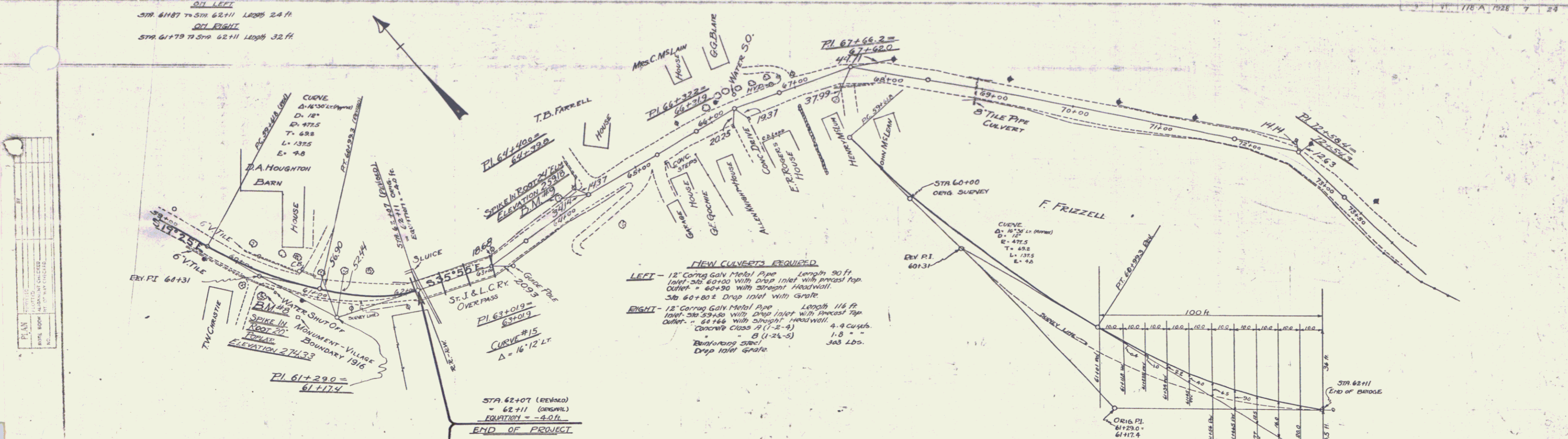


FED. ROAD DIST. NO.	STATE	PROJECT	FISCAL YEAR	SHEET NO.	TOTAL SHEETS
118-A	VT	118-A	1980	6	24



WOOD GUIDED STRIP REQUIRED
 ON LEFT
 STA 61+87 TO STA 62+11 LENGTH 24 FT
 ON RIGHT
 STA 61+79 TO STA 62+11 LENGTH 32 FT

FED. ROAD DIST. 118-A-1928 7 24



PLAN

DATE	1928
BY	J. H. [unclear]
CHECKED BY	[unclear]
APPROVED BY	[unclear]

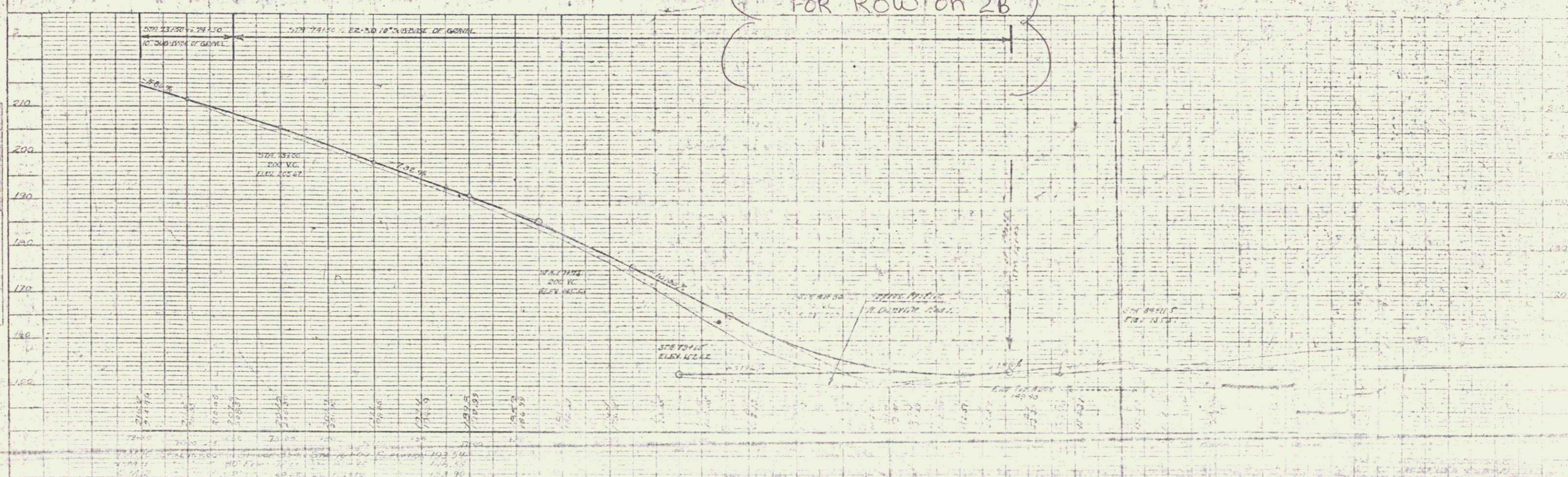
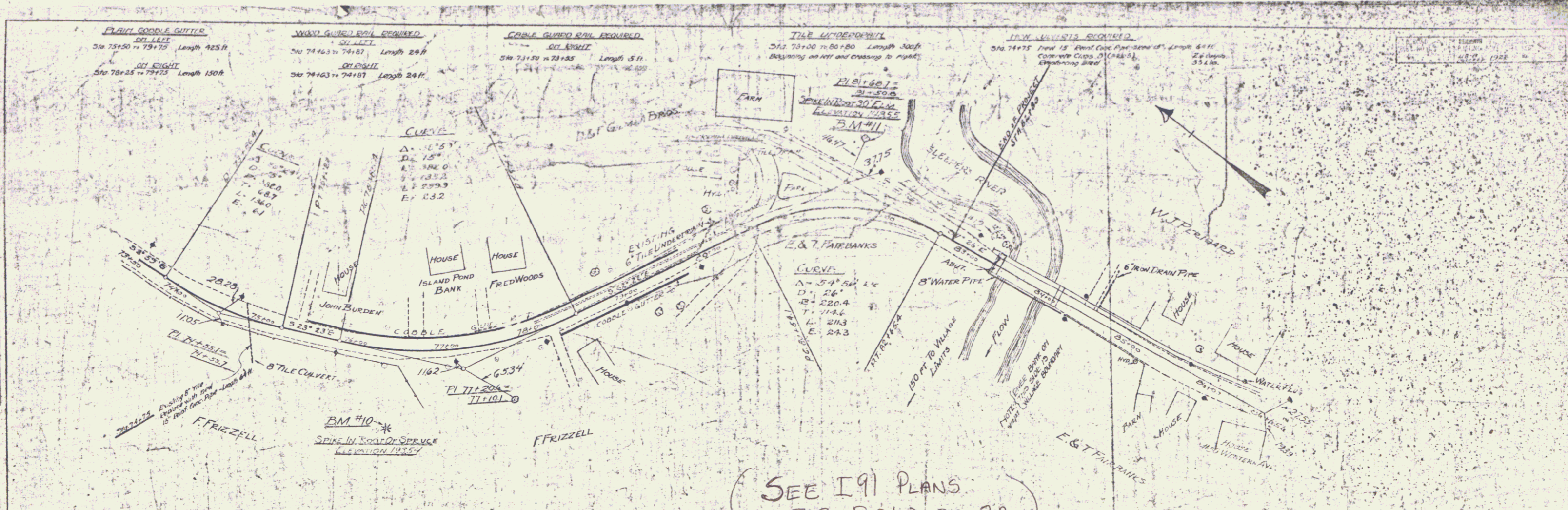
PROFILE

Station	Elevation
60+00	230.0
61+00	235.0
62+00	240.0
63+00	245.0
64+00	250.0
65+00	255.0
66+00	260.0
67+00	265.0
68+00	270.0
69+00	275.0
70+00	280.0
71+00	285.0
72+00	290.0
73+00	295.0

BM B SPIKE IN ROOT 20' POPLAR 16 FT. STA. 60+45 ELEVATION 274.33
 BM 9 24' ELM 15 FT. 64+00 259.18

DRYVILLE - ST. JOHNSBURY
 PROJECT 118-A
 SHEET 7 of 24

6



PLAN

DATE: 10/1/50
 DRAWN BY: [Name]
 CHECKED BY: [Name]
 SCALE: AS SHOWN

PROFILE

DATE: 10/1/50
 DRAWN BY: [Name]
 CHECKED BY: [Name]
 SCALE: AS SHOWN