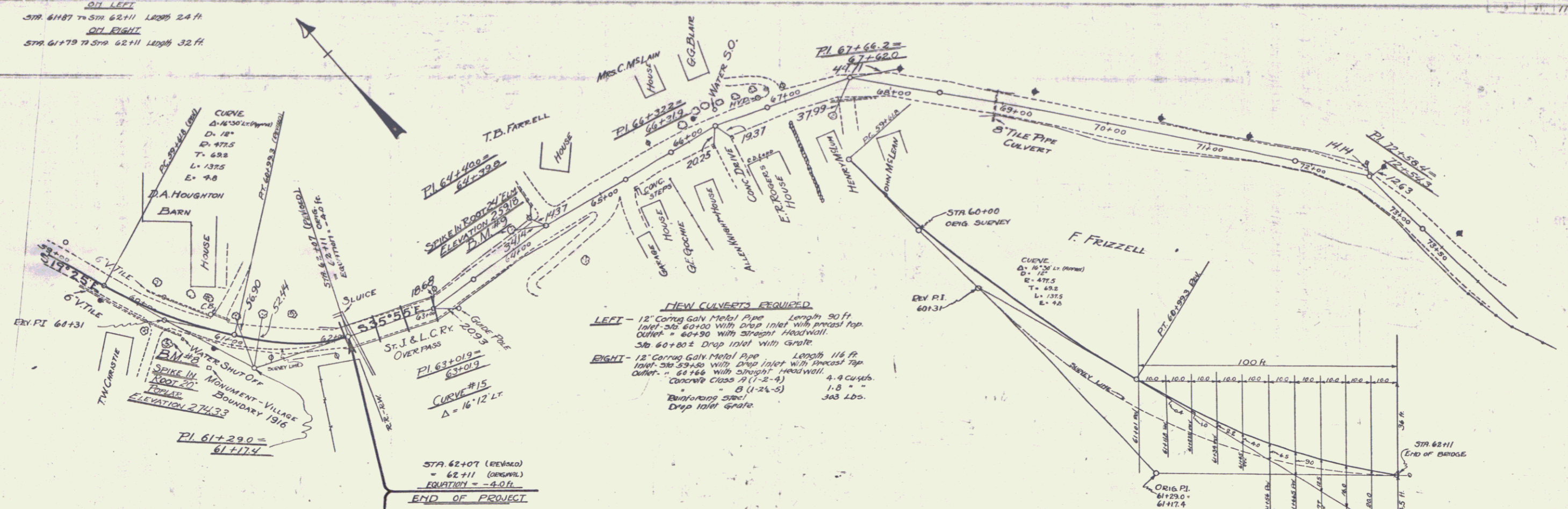
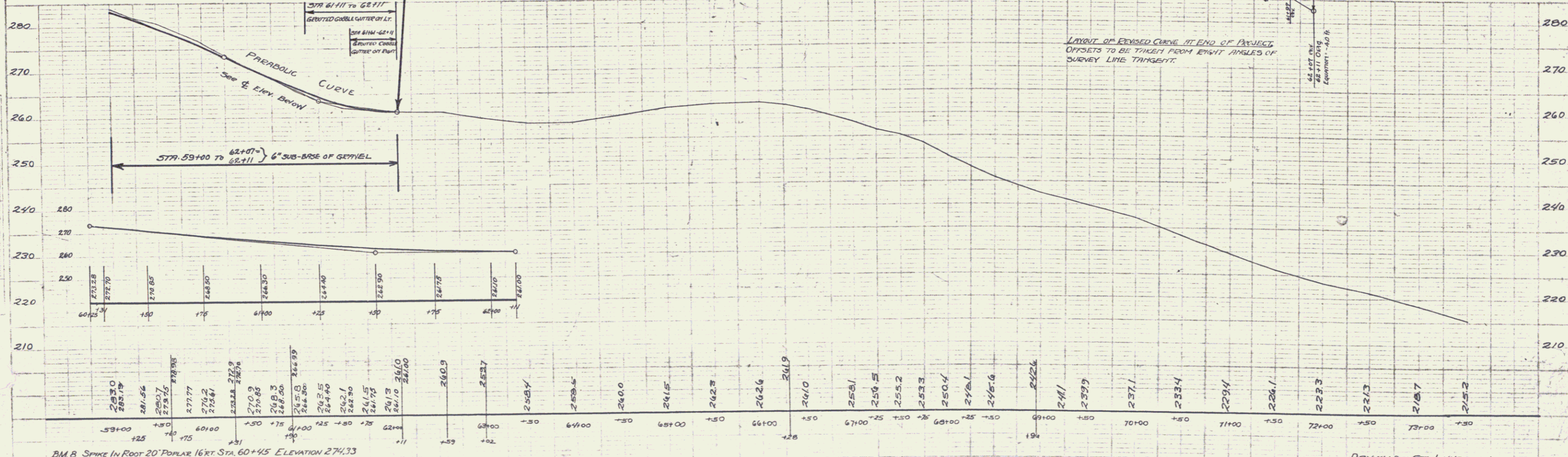
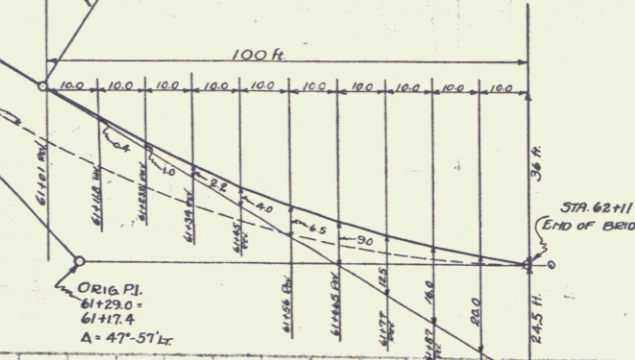


WOOD GUIDED STRUT REQUIRED  
 ON LEFT  
 STA 61+87 TO STA 62+11 LENGTH 24 FT  
 ON RIGHT  
 STA 61+79 TO STA 62+11 LENGTH 32 FT

FED. ROAD DIST. 118-A-1928 7 24



**NEW CULVERTS REQUIRED**  
**LEFT** - 12\" Corrug Galv Metal Pipe Length 90 ft  
 100ft. dia. 60+00 with drop inlet with precast top  
 Outlet = 60+90 with straight headwall.  
**RIGHT** - 12\" Corrug Galv Metal Pipe Length 116 ft  
 100ft. dia. 60+00 with drop inlet with precast top  
 Outlet = 60+76 with straight headwall. 4.4 cu yds  
 Concrete Class 4 (1-2-4) 1.0\"  
 Reinforcing steel 3/8\" Dia. 3x3 Lbs.  
 Drop inlet grate.



BM B SPIKE IN ROOT 20\" POPLAR 16 FT. STA. 60+45 ELEVATION 274.33  
 BM 9 24\" ELM 15 FT. 64+00 259.18

DRYVILLE - ST. JOHNSBURY  
 PROJECT 118-A  
 SHEET 7 of 24

6