

FED. ROAD DIST. NO.	STATE	PROJECT NO.	YEAR	SHEET NO.	TOTAL SHEETS
118 A	VA	118 A	1928	3	24

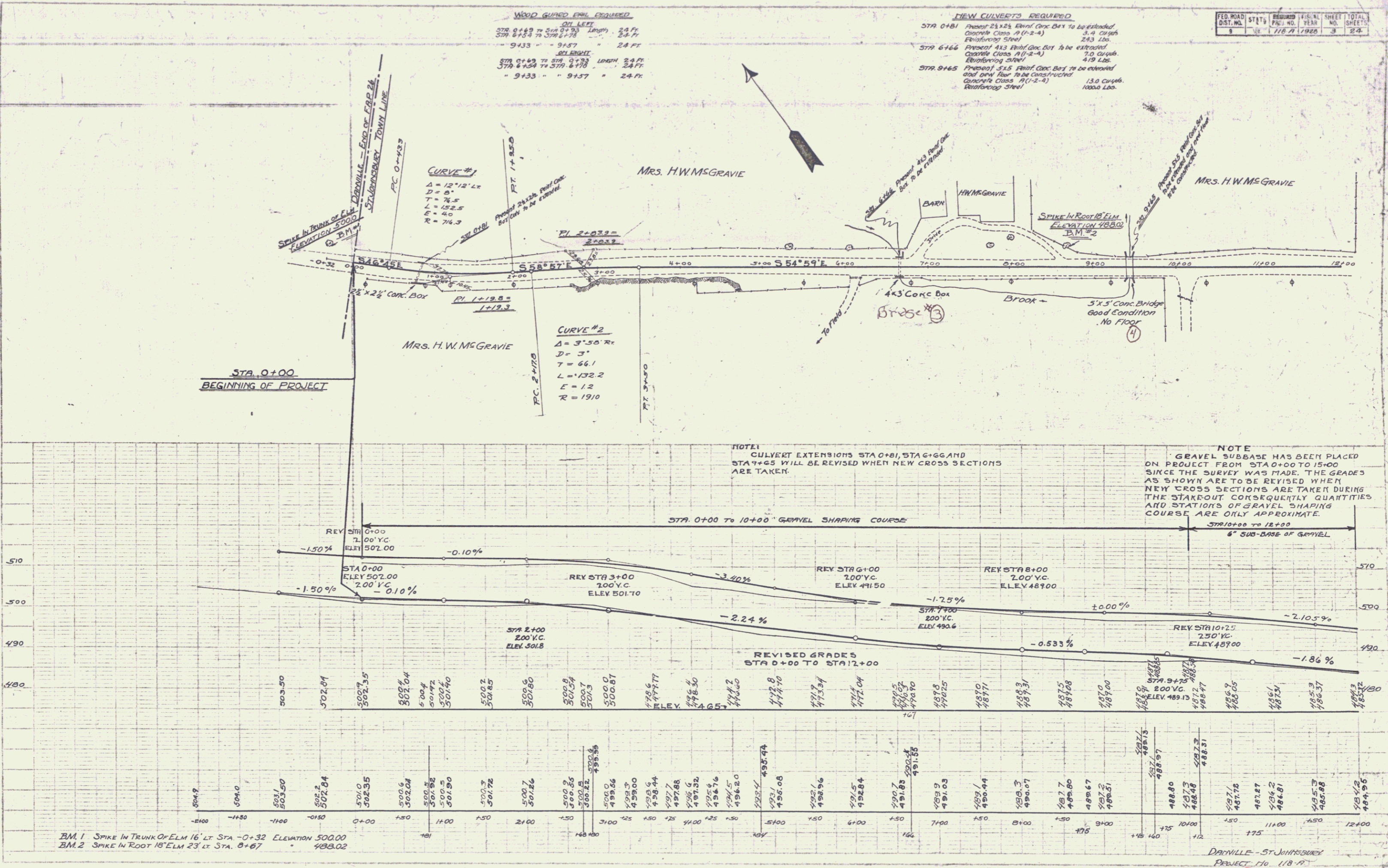
WOOD GUARD RAIL REQUIRED
 ON LEFT
 STA 8+83 TO STA 9+33 LENGTH 24 FT
 STA 8+10 TO STA 8+54 LENGTH 24 FT
 9+33 " 9+57 " 24 FT
RIGHT
 STA 8+83 TO STA 9+33 LENGTH 24 FT
 STA 8+10 TO STA 8+54 LENGTH 24 FT
 " 9+33 " 9+57 " 24 FT

NEW CULVERTS REQUIRED
 STA 0+81 Present 24x25 Eriol. Conc. Box to be extended
 Concrete Class A (1-2-4) 243 Lbs.
 Reinforcing Steel 243 Lbs.
 STA 6+66 Present 4x5 Eriol. Conc. Box to be extended
 Concrete Class A (1-2-4) 49 Lbs.
 Reinforcing Steel 49 Lbs.
 STA 9+65 Present 31.5 Eriol. Conc. Box to be extended
 and 2nd floor to be constructed
 Concrete Class A (1-2-4) 130 Concrts.
 Reinforcing Steel 1000 Lbs.

PLAN	SECTION	SCALE
1/4" = 10'	1/4" = 10'	1/4" = 10'

DATE	BY	REVISION

STA. 0+00
 BEGINNING OF PROJECT



BM. 1 SPIKE IN TRUNK OF ELM 16' LT STA. -0+32 ELEVATION 500.00
 BM. 2 SPIKE IN ROOT 18' ELM 23' LT STA. 0+67 ELEVATION 488.02

DAIRVILLE - ST. JOHNSBURGH
 PROJECT NO. 118 A
 SHEET 3 of 24