

GUARD RAIL REQUIRED
ON LEFT
 Sta 197+89 to 198+13 Length 24 ft
 • 202+26 - 202+50 • 24 •
 • 208+32 - 208+56 • 24 •
ON RIGHT
 Sta 198+15 to 198+39 Length 24 ft
 • 202+56 - 202+80 • 24 •
 • 208+32 - 208+56 • 24 •
TOTAL THIS SHEET 194 •

NEW CULVERTS REQUIRED
 Sta 198+13 2'x2' Reinforced concrete culvert
 See Sheet 23
 Sta 202+55 4'x3' Reinforced concrete culvert
 See Sheet 23
 Sta 208+44 3'x2' Reinforced concrete culvert
 with drop inlet
 1-2-4 Concrete 5.5 cu yds
 1-2-5 Concrete 7.1 cu yds
 Reinforcing Steel 164 lbs.

SUB BASE REQUIRED
 Sta 204+00 to 211+00 Length 700 ft
SPECIAL STONE BASE REQUIRED
 Sta 198+00 to 204+00 Length 600 ft

PAVING REQUIRED
ON RIGHT
 Ditch Sta 202+76 to 205+00 224 sq yds

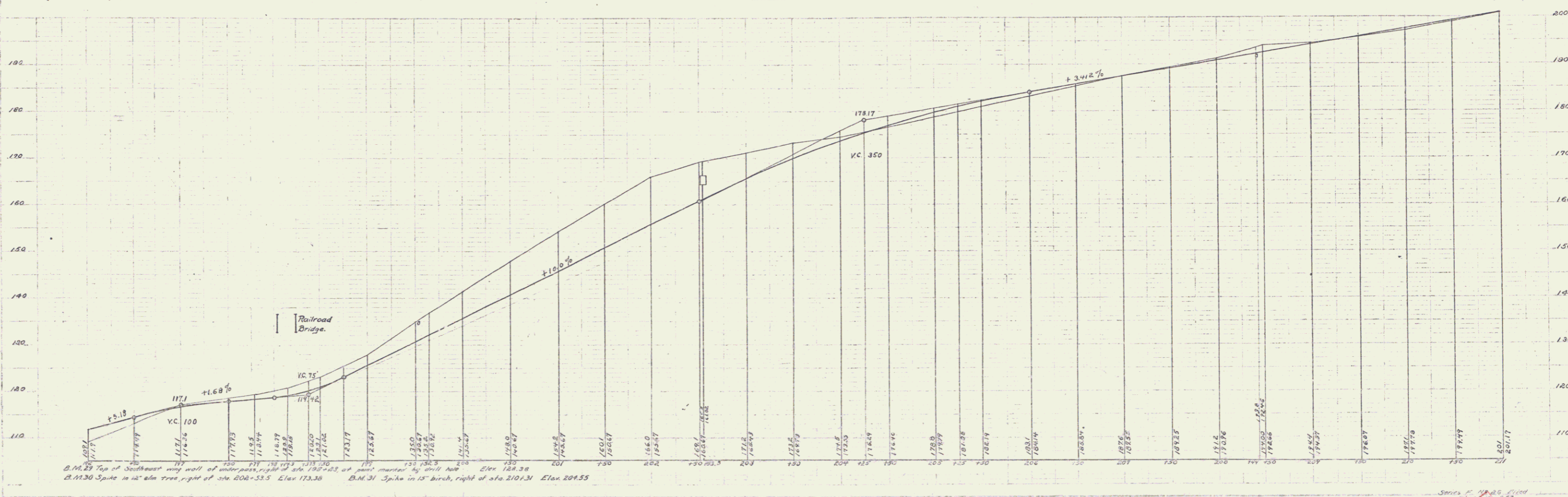
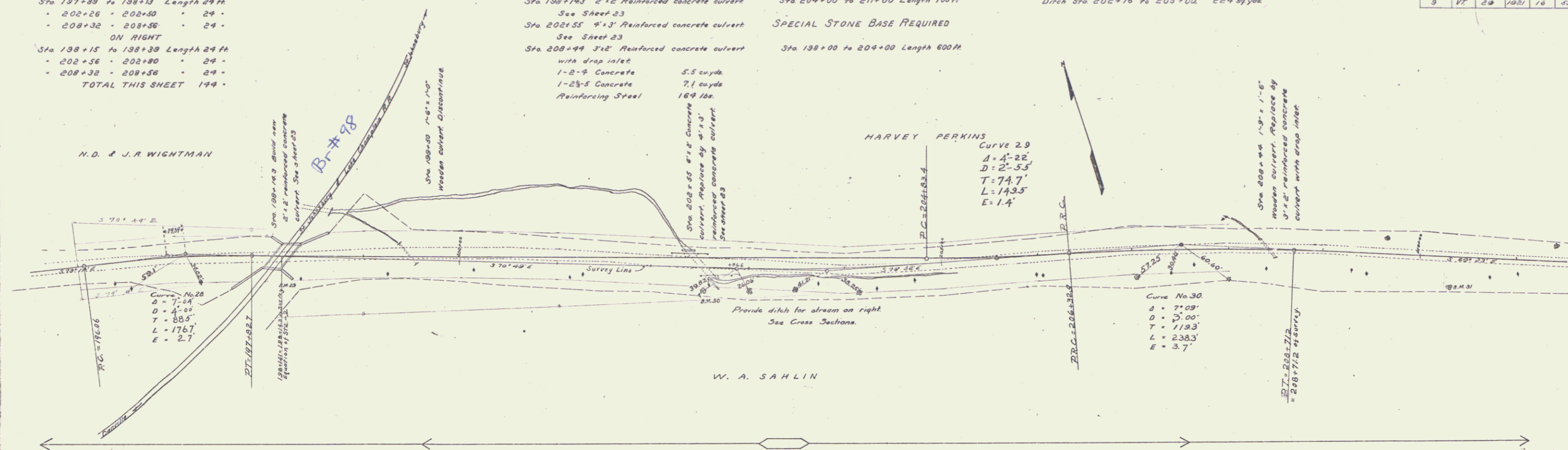
FED. ROAD DIST. NO.	STATE	FED. AID FISCAL YEAR	SHEET NO.	TOTAL SHEETS
9	VT	29	108	116

N. D. & J. R. WIGHTMAN

W. A. SAHLIN

HARVEY PERKINS
 Curve 2.9
 Δ = 4°-22'
 D = 2°-53'
 T = 74.7'
 L = 143.5'
 E = 1.4'

Curve No. 30
 Δ = 7°-09'
 D = 3°-00'
 T = 119.3'
 L = 238.3'
 E = 3.7'



B.M. 25 Top of Southwest wall of water pass, right of sta 198+25 of plan shown by drill hole. Elev. 128.99
 B.M. 30 Spike in 12" elm tree, right of sta 208+55. Elev. 113.30
 B.M. 31 Spike in 12" birch, right of sta 210+31. Elev. 204.55

Series P. N. D. & J. R. Wightman
 Date 10/2/53