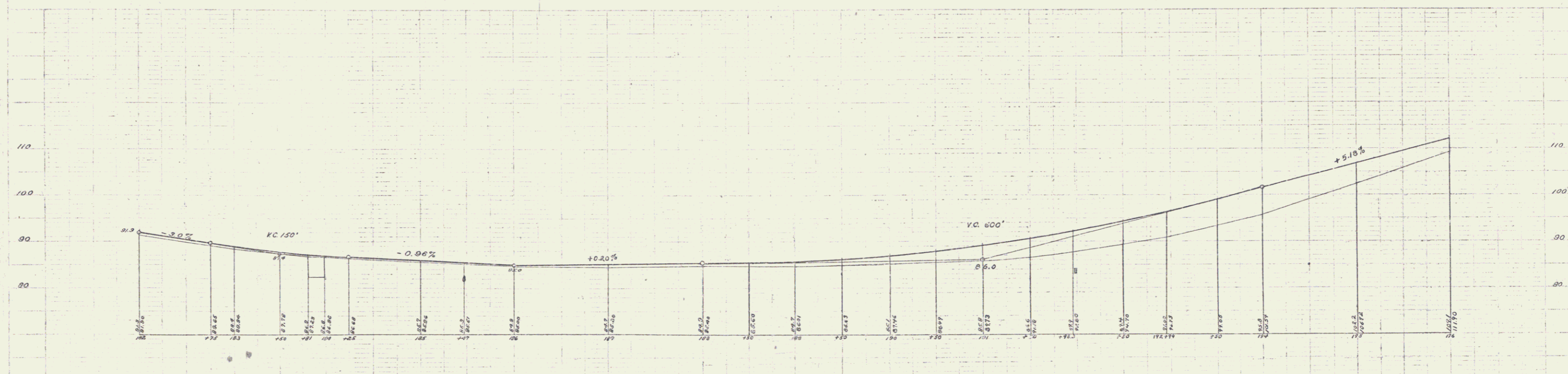
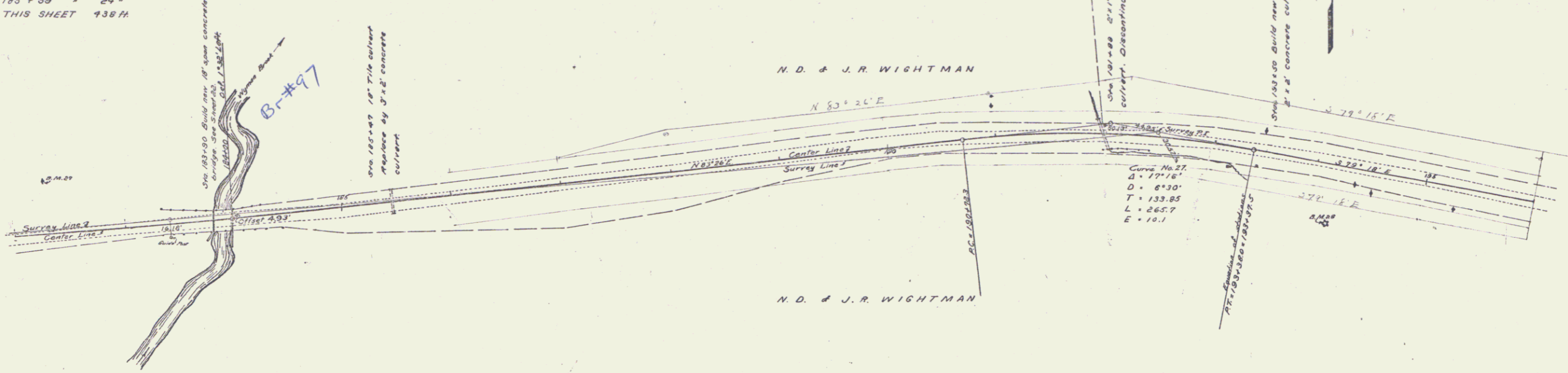


GUARD RAIL REQUIRED
ON LEFT
 Sta. 182+00 to 183+79 Length 179 ft
 = 189+01 to 184+17 = 16'
 Sta. 185+35 to 185+53 Length 24 ft
ON RIGHT
 Sta. 182+00 to 183+79 Length 179 ft
 = 184+01 to 185+17 = 16'
 = 185+35 to 185+53 = 24'
TOTAL THIS SHEET 438 ft

NEW CULVERTS REQUIRED
 Sta. 185+47 3' x 2' Concrete Culvert
 1-2-4 Concrete 6.8 cu yds
 1-2-5 Concrete 7.1 cu yds
 Sta. 193+50 2' x 2' Concrete Culvert
 1-2-4 Concrete 12.9 cu yds
 1-2-5 Concrete 12.4 cu yds

FED. ROAD DIST. NO.	STATE	FED. AID PROJECT NO.	SHEET NO.	TOTAL SHEETS
9	VT	24	12	53



B. M. 27 Spike in telephone pole left of sta. 182+30 Elev. 86.03
 B. M. 20 Spike in spruce tree right of sta. 189+15 Elev. 99.22

Series of 14 sheets filed
 1921