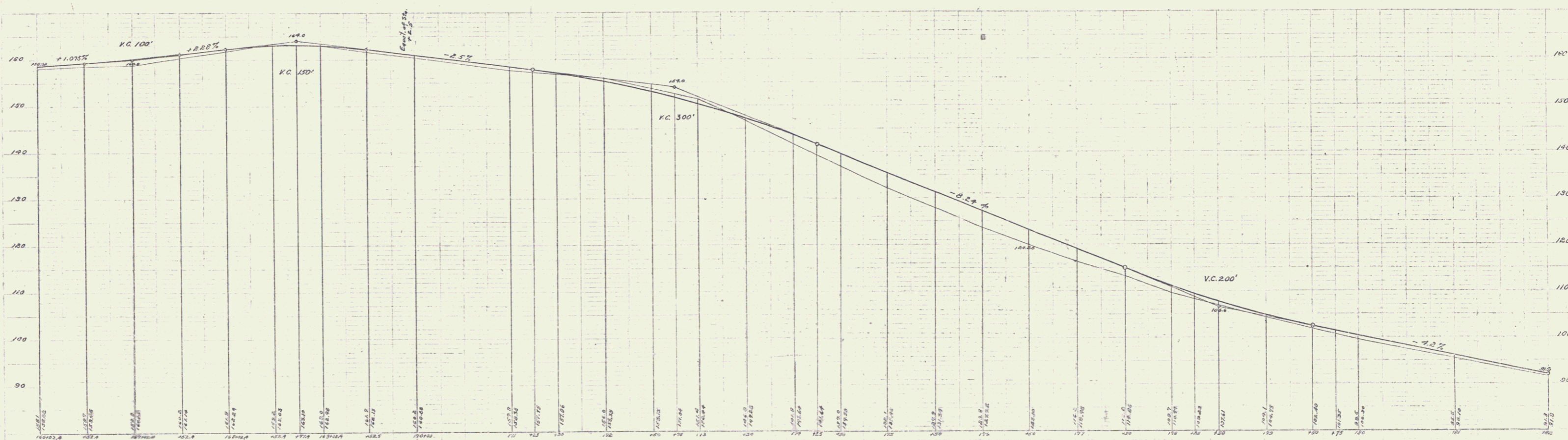
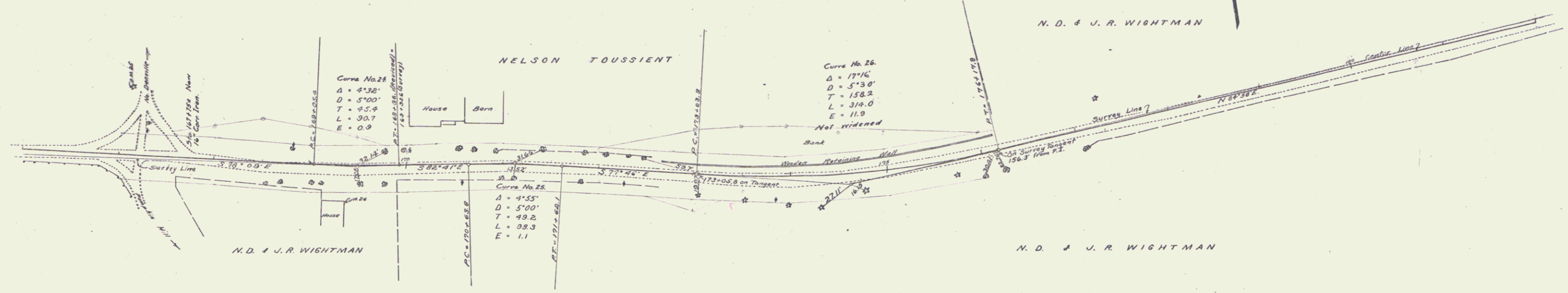


GUARD RAIL REQUIRED
 ON LEFT
 Sta 120+23 to Sta 122+00 Length 177 ft
 ON RIGHT
 - 166+00 to Sta 166+72 - 72'-
 - 169+80 - 171+00 - 120'-
 - 180+23 - 182+00 - 177'-
 - 187+23 - 189+00 - 177'-
TOTAL THIS SHEET 442 ft

NEW CULVERTS REQUIRED
 Sta 167+75 to 16" Curve I.P. 2012
 1-25' 3" Concrete 20 cu yds.

FED. ROAD DIST. NO.	STATE	FED. AID FISCAL YEAR	SHEET NO.	TOTAL SHEETS
9	VT	26	102	143



B.M. 25 Spike in cedar tree NW of Sta 167+16 Elev. 164.78
 B.M. 26 Still box, North westerly corner of N.D. and J.R. Wightman house Elev. 162.84

Survey of 1926
 Date 11/1/26