

**GUARD RAIL REQUIRED**

**ON LEFT**

Sta. 137+00 to Sta. 137+24	24 ft.
139+42 - 139+66	24 -
141+66 - 141+90	24 -
149+73 - 150+00	25 -

**ON RIGHT**

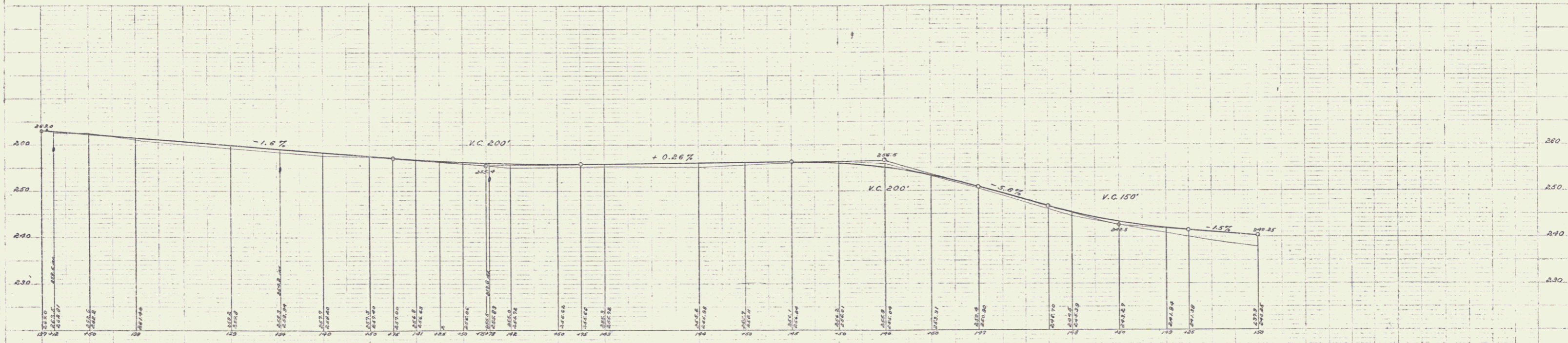
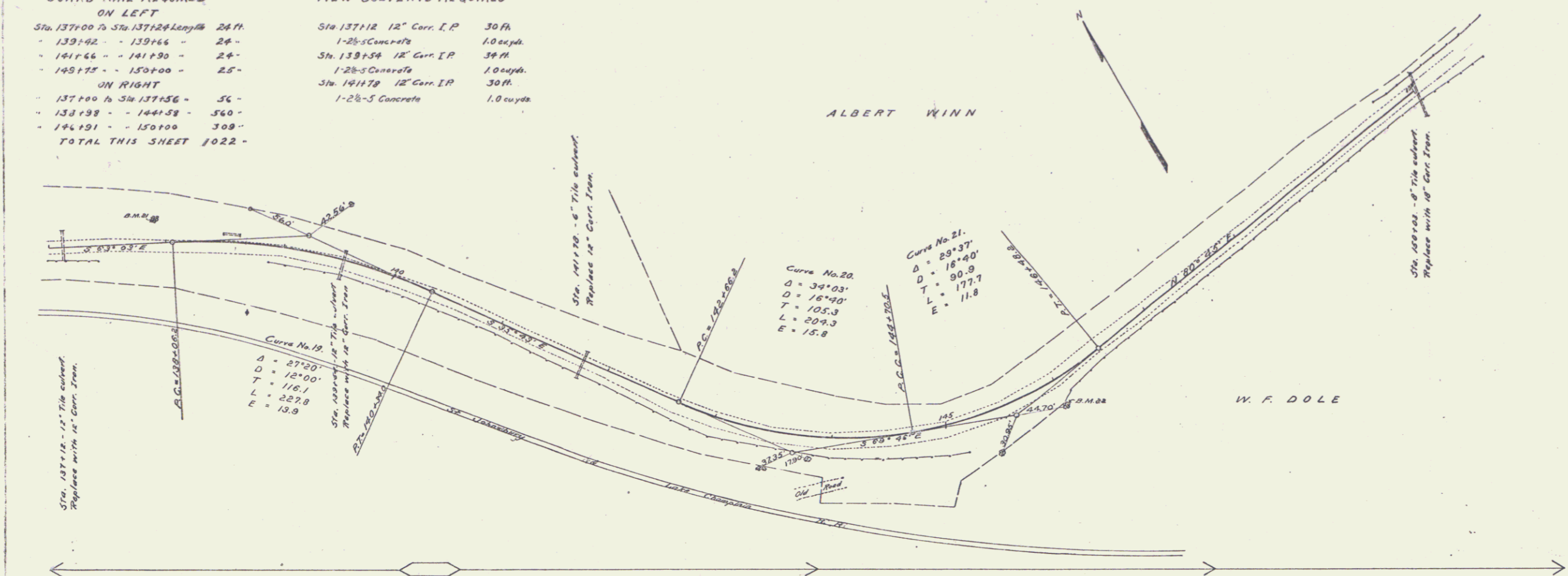
137+00 to Sta. 137+56	56 -
138+38 - 144+58	56 -
146+51 - 150+00	309 -

**TOTAL THIS SHEET 1022 -**

**NEW CULVERTS REQUIRED**

Sta. 137+12 12" Corr. I.P.	30 ft.
1-28-5 Concrete	1.0 cu yds.
Sta. 139+54 12" Corr. I.P.	30 ft.
1-28-5 Concrete	1.0 cu yds.
Sta. 141+79 12" Corr. I.P.	30 ft.
1-28-5 Concrete	1.0 cu yds.

FEED ROAD	NO. OF STAKES	FEED AND SPICAL	SHEET TOTAL
9	VT.	26	192
		12	53



B.M. 21 Spike in cherry tree, left of 137+91 Elev. 269.57  
 B.M. 22 Spike in elm tree, right of 146+00 Elev. 259.51

300000' = 1" = 100'