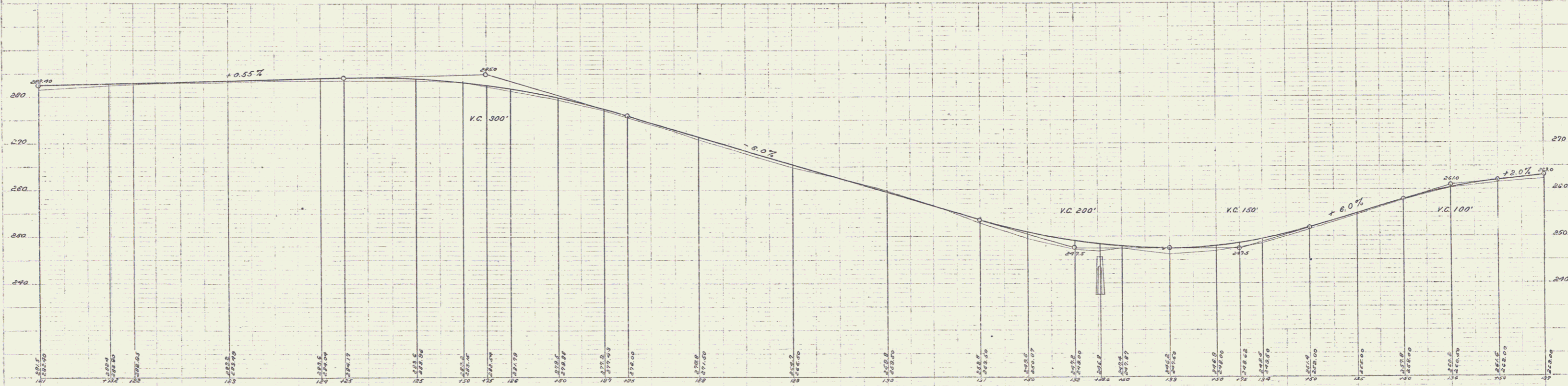
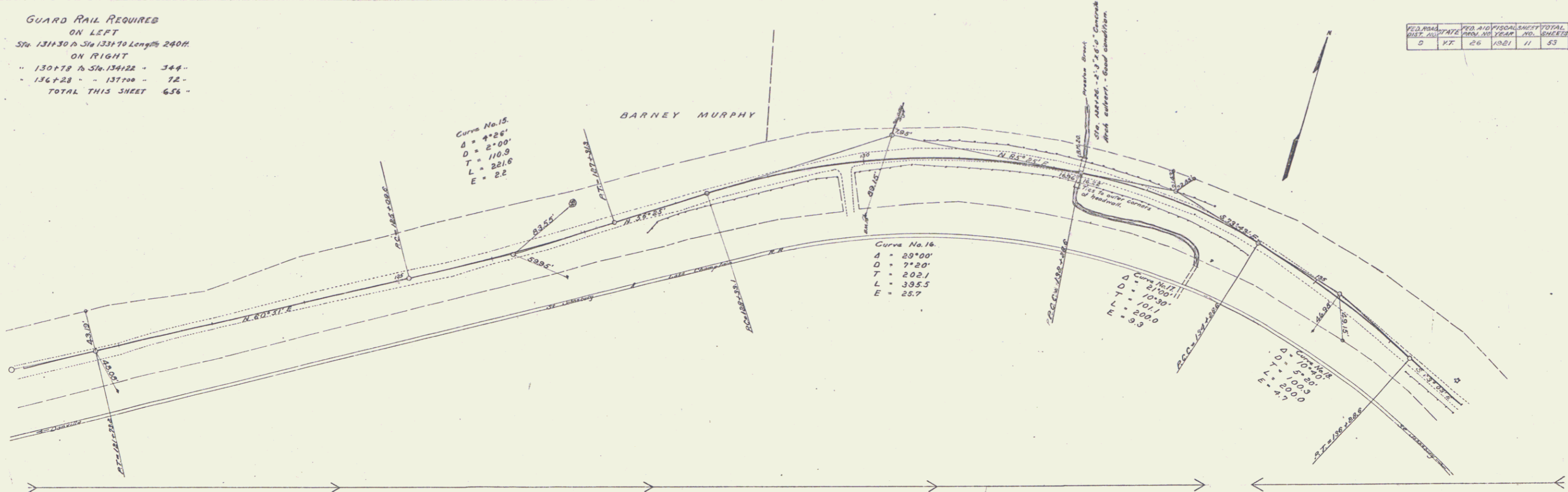


GUARD RAIL REQUIRED  
ON LEFT  
Sta 131+30 to Sta 133+70 Length 240ft.  
ON RIGHT  
" 130+18 to Sta 134+22 = 344"  
" 136+28 " 137+08 = 72"  
TOTAL THIS SHEET 656"

NO.	DATE	BY	REV.	NO.	TOTAL
0			26	1021	11 53



B.M. 19 Spike in telegraph pole, right of 129+95 Elev. 264.00  
B.M. 20 Top of concrete, north westerly corner of Northernly Abutment of culvert at 132+208 Elev. 245.69

Scale 1" = 40' Horiz.  
1" = 10' Vert.